



**UNIFORM & APPEARANCE POLICY  
FOR  
KNUTSFORD ACADEMY AND CHESHIRE STUDIO  
SCHOOL  
2022-23**

<b>Policy lead:</b>	Hazel Weigh
<b>Last review date:</b>	November 2022
<b>Next review date:</b>	September 2024
<b>Approval needed by:</b>	Head teacher – James Whittaker

## **Why do we have a school uniform?**

Uniform represents the core values and high expectations of Knutsford Academy and Cheshire Studio School. It is an important part of being a student in our schools and a member of our community because:

- Uniform creates a sense of professionalism and a clear sense of standards.
- Uniform creates a sense of pride, identity and belonging both in school and during the journey to and from school.
- Uniform removes the points of difference between students, helping to equalise social status and promote equality and inclusivity.
- Uniform creates a 'working environment' mindset and helps to separate home and school life.
- Uniform helps to promote wellbeing, improve self-confidence and reduce bullying.

## **Sanctions**

Knutsford Academy and Cheshire Studio School have high standards when it comes to uniform and appearance. Breaches in standards will be communicated through Satchel One and may lead to after-school detentions, internal suspension in the RESET room or in persistent cases external suspension. Parental support is vital in achieving and maintaining our high standards.

## **Uniform Provider**

Branded uniform/PE kit for Knutsford Academy and Cheshire Studio School is purchased from our supplier SWI schoolwear - [SWI Schoolwear](#). We have branded items for consistency and also because they are hardwearing. School ties may also be bought from Student Reception. Some items of uniform can be bought from elsewhere as detailed in the tables below.

## **Poverty Proofing**

Knutsford Academy and Cheshire Studio School does have some second-hand uniform/shoes/PE kit items that have been donated. If you are struggling to meet the costs of replacement items, then please contact your child's Head of Year.

Please donate any washed second-hand uniform you might have to Student/Main reception.

**By accepting a place at the school, parents/carers and students are agreeing to these rules and standards.**

# Knutsford Academy Uniform – Years 7 – 11

## Compulsory Uniform:

Navy Blazer with embroidered 'Academy' School logo	From SWI
Plain white shirt	Any stockist
Black classic cut trousers – to be worn on the waist	Any stockist
Black box pleat skirt – to be worn knee length to mid-thigh	Any stockist
School tie – clip on or traditional tie	From SWI
Plain black tights	Any stockist
Plain black socks – from ankle to knee length	Any stockist
Smart all black shoes (more guidance provided below)	Any stockist

## Optional:

Plain navy blue knit 'V' neck jumper - can be worn beneath the blazer but not instead of.	Any stockist
Plain black or navy Hijabs/head scarves	

# Cheshire Studio School Uniform – Years 10 – 11

## Compulsory Uniform:

Navy Blazer with embroidered 'Studio' School logo	From SWI
Plain white shirt	Any stockist
Black classic cut trousers – to be worn on the waist	Any stockist
Black box pleat skirt – to be worn knee length to mid-thigh	Any stockist
School tie – clip on or traditional tie	From SWI
Plain black tights	Any stockist
Plain black socks – from ankle to knee length.	Any stockist
Smart all black shoes (more guidance provided below)	Any stockist

## Optional:

Plain navy blue knit 'V' neck jumper - can be worn beneath the blazer but not instead of.	Any stockist
Plain black or navy Hijabs/head scarves	

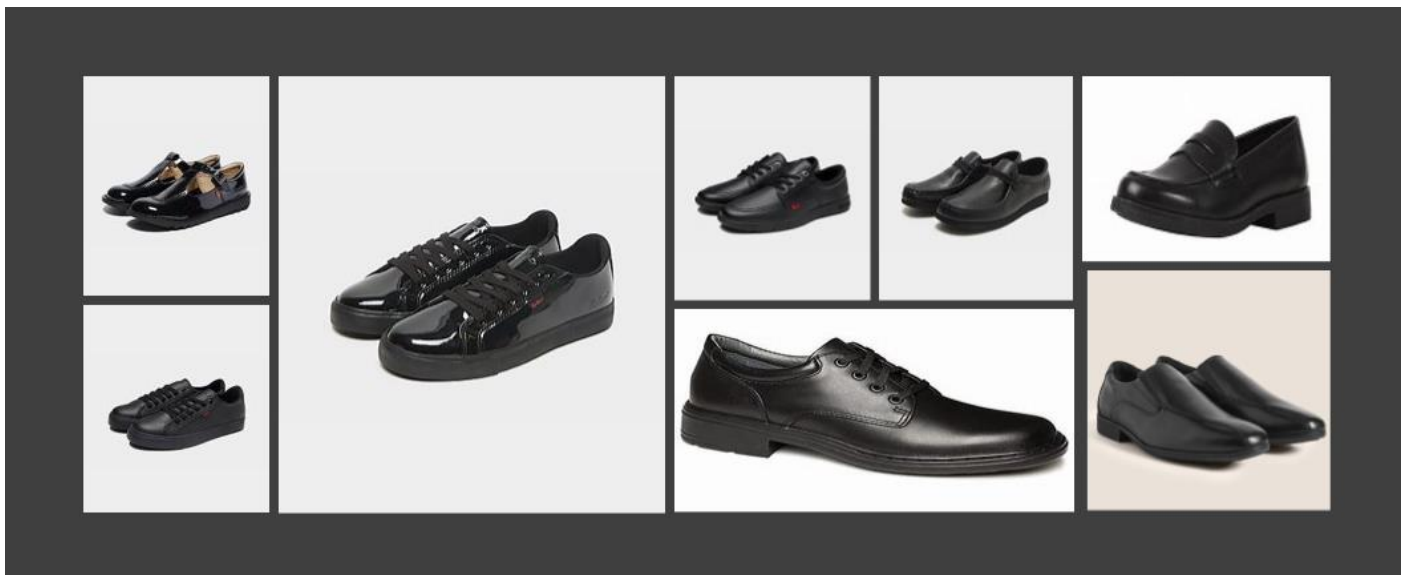
All items of uniform should be clearly named or labelled to assist with returning items that have been left behind. Unnamed items are put into lost property.

**By accepting a place at the school, parents/carers and students are agreeing to these rules and standards.**

## Footwear

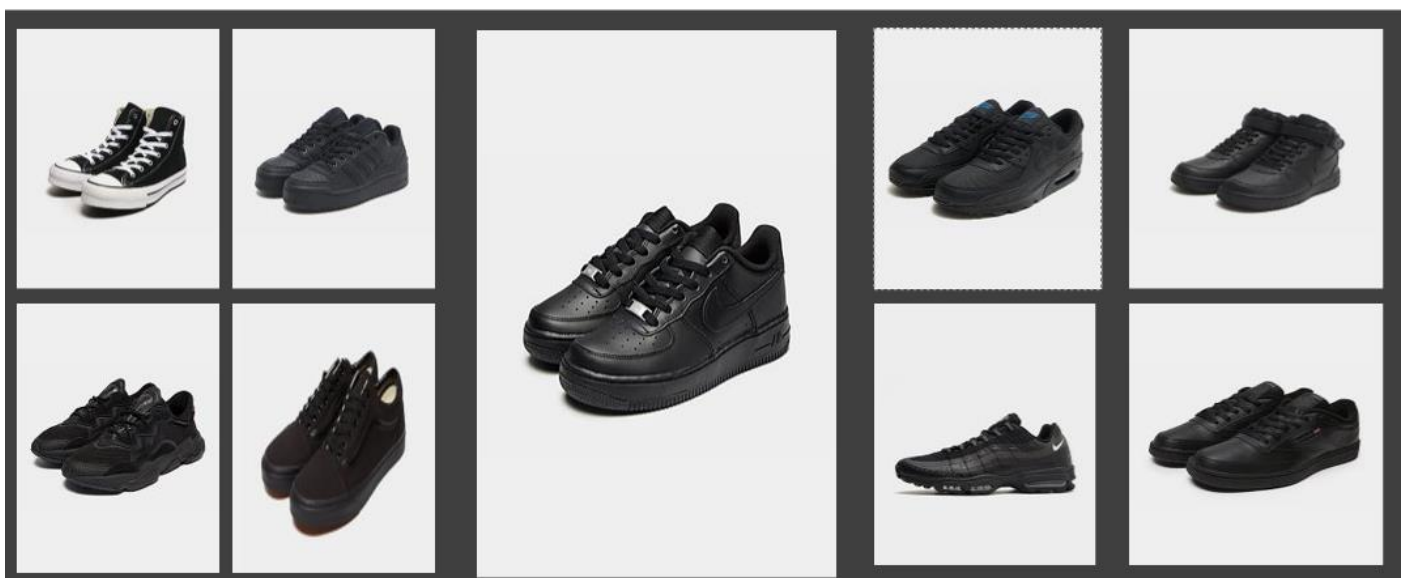
- Sensible, plain, all black traditional shoes should be worn for school – this does include the brand ‘Kickers’.

**Examples of suitable school shoes:**



- No sports trainers (Nike, Puma, Converse, Adidas, Vans) are to be worn unless medical evidence can be provided to the Head of Year/Assistant Headteacher.
- No boots, canvas or footwear with logos on them.

### Examples of footwear that are NOT suitable for school:



**If you are in any doubt about the suitability of the shoe you are buying for school, please do not hesitate to contact your child's form tutor or Head of Year to avoid incurring additional cost.**

**By accepting a place at the school, parents/carers and students are agreeing to these rules and standards.**

# General Presentation/Appearance

Students should take pride in their appearance. They are expected to always be well presented and smartly dressed as they represent themselves and the school.

- The top button of shirts must be fastened, and the knot of the tie must cover the top button.
- The school tie should be worn to the waistband (6 button rule).
- Shirts must be tucked in at all times.
- Trousers must be worn at the waist.
- Skirts length must be from the knee to no higher than the middle of the thigh.
- The school blazers are **compulsory** and are expected to be worn at all times but can be removed in classrooms with the permission of the teacher.

*The exception to this rule is during periods of hot weather, when the Assistant Headteacher will make the decision to relax the rule as appropriate.*

- Blazer sleeves must not be rolled up.
- A navy blue knit 'V' necked jumper can be worn underneath the blazer but not instead of.
- Tights must not be ripped.
- Socks should be plain black with no logos or markings and are not to be worn over the knee.
- No coats or hoodies or sweatshirts are to be worn in the building – they are subject to confiscation if students choose to wear them.

**By accepting a place at the school, parents/carers and students are agreeing to these rules and standards.**

# Knutsford Academy & Cheshire Studio School

## PE kit – Years 7 – 11

Navy/sky blue training top	From SWI
Navy/sky multi-sport top	From SWI
Navy/silver shorts	From SWI
Navy/silver training pants (optional)	From SWI
Navy thermal base layer (optional)	From SWI
Navy/silver coolmax socks	From SWI
Trainers & football boots	Any stockist
Recommended safety – shin pads & gum shield	Any stockist

Navy/sky full zip training top	From SWI
Navy/sky training top	From SWI
Navy/silver training shorts	From SWI
Navy/silver leggings	From SWI
Navy/silver skort (optional)	From SWI
Navy/silver trainer pants (optional)	From SWI
Navy/silver coolmax socks	From SWI
Trainers	Any stockist
Recommended safety – shin pads & gum shield	Any stockist

- Long hair is expected to be tied up for PE. Students are expected to be equipped with a bobble as part of their kit if required.
- ‘Fashion’ trainers or pumps are not suitable for PE lessons.
- If students are excused from PE, they are expected to have a note from parents/carers in their planner.
- All items of PE kit should be named to assist with returning items that have been left behind. Unnamed items are put into lost property.

**If students do not bring their own PE kit to lessons, they are expected to borrow spare kit and still participate.**

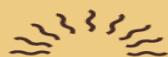
**By accepting a place at the school, parents/carers and students are agreeing to these rules and standards.**

## Hair Styles / Make Up

- Extreme hairstyles are not permitted. These are defined as hairstyles which do not follow social conventions – closely shaven heads, unnatural colouring of hair.
- Long hair which presents health and safety issues must be tied back for PE, Performing Arts, Science and practical technology lesson. Students are expected to be equipped with a bobble if required.
- Light, natural make up is permitted.
- Fake/acrylic nails are not permitted.

## Halo Code

As part of our commitment to be an inclusive school community, we have adopted the Halo Code. This is a campaign pledge that promises members of the black community that they have the “freedom and security to wear all afro-hairstyles without judgement”. At our school we want to recognise and celebrate our staff and student identities.



### The Halo Code

Our school champions the right of staff and students to embrace all Afro-hairstyles. We acknowledge that Afro-textured hair is an important part of our Black staff and students' racial, ethnic, cultural, and religious identities, and requires specific styling for hair health and maintenance.

We welcome Afro-textured hair worn in all styles including, but not limited to, afros, locs, twists, braids, cornrows, fades, hair straightened through the application of heat or chemicals, weaves, wigs, headscarves, and wraps.

At this school, we recognise and celebrate our staff and students' identities. We are a community built on an ethos of equality and respect where hair texture and style have no bearing on anyone's ability to succeed.

**By accepting a place at the school, parents/carers and students are agreeing to these rules and standards.**

## Jewellery

- A wristwatch may be worn.
- Smart watches are only allowed for telling the time and must not be worn when taking examinations. If students use their smart watch as a method of communication or recording, it is subject to confiscation (see mobile phone policy).
- Students are allowed to wear **one** small stud in each ear. A stud is defined as an earring that fits onto the lobe or edge of the ear but not below it.
- Nose studs are not permitted but a clear plastic retainer may be worn.
- Students are not allowed to wear any other jewellery including rings and/or bracelets.
- Piercings should be done at the start of the summer holidays to allow time for healing. Students are not allowed to cover piercings with a plaster.

**If students choose to wear jewellery that breaches these standards, and items are seen by staff they are subject to confiscation – confiscated items are kept securely until collected by parents or the items will be returned at the end of a half term.**

## Equipment for learning

Within the school bag students should have a base level of equipment to support their learning, this includes:

- Planner
- Reading book
- A pencil case is expected to contain the following:
  - Ruler
  - 2 x Handwriting pens – blue or black (black pens are required for examinations)
  - Pencil / Pencil Sharpener / Eraser
  - Calculator / Compass / Protractor

Optional items include - Highlighters, coloured pens / pencils

**By accepting a place at the school, parents/carers and students are agreeing to these rules and standards.**



## School bags

- Students school bags must be appropriate for carrying A4 books, pencil case/stationary, planner and other necessary equipment/kit for school.
- Small handbags / 'man bags' are not permitted.

## Additional

- Students are expected to always behave and move around the building in a calm and sensible manner.
- Students who request to leave lessons to go to the toilet are expected to have their planner signed by staff granting permission.
- Students are expected to take personal responsibility for their belongings. They should not bring expensive items into school - Students bringing in mobile phones/EarPods/smart watches, as with all other valuables, do so at their own risk. School cannot be held responsible for the loss, theft, or damage of such items.
- Students should not bring more money into school than they should reasonably need for food, drink, and travel.

**By accepting a place at the school, parents/carers and students are agreeing to these rules and standards.**