



THE LEARNING PARTNERSHIP

**UNIFORM & APPEARANCE POLICY
FOR
KNUTSFORD ACADEMY AND CHESHIRE STUDIO
SCHOOL
2024 - 2025**

Policy lead:	Assistant Headteacher - Hazel Weigh
Last review date:	July 2024
Next review date:	July 2025
Approval needed by:	Head teacher – Karen Key

Why do we have a school uniform?

Uniform represents the core values and high expectations of Knutsford Academy and Cheshire Studio School. It is an important part of being a student in our schools and a member of our community because:

- Uniform creates a sense of professionalism and a clear sense of high standards.
- Uniform creates a sense of pride, identity and belonging both in school and during the journey to and from school.
- Uniform removes the points of difference between students, helping to equalise social status and promote equality and inclusivity.
- Uniform creates a 'working environment' mindset and helps to separate home and school life.
- Uniform helps to promote wellbeing, improve self-confidence, and reduce bullying.

Uniform Provider

Branded uniform/PE kit for Knutsford Academy and Cheshire Studio School is purchased from our supplier. We have branded items for consistency and because they are hardwearing. Some items of uniform can be bought from elsewhere:

SWI Schoolwear-[SWI Schoolwear](#)

School ties may also be bought from Student Reception.

Poverty Proofing – Uniform Exchange

Knutsford Academy and Cheshire Studio School does have some second-hand uniform/shoes/PE kit items that have been donated. If you are struggling to meet the costs of replacement items, then please contact your child's Head of Year so that we can support your child having the correct uniform.

We welcome any unworn or washed second-hand uniform, which can be recycled into our uniform exchange. If you do have any items, please drop them into our Student/Main receptions.

All items of uniform should be clearly named or labelled to assist with returning items that have been left behind. Unnamed items are put into lost property for a half term and are then added to our uniform exchange.

Sanctions

Knutsford Academy and Cheshire Studio School have high standards when it comes to uniform and appearance. Breaches in standards will be communicated through Satchel One and may lead to after-school detentions, internal suspension in the RESET room or in persistent cases external suspension. Parental support is vital in achieving and maintaining our high standards.

By accepting a place at the school, parents/carers and students are agreeing to these rules and standards.

Knutsford Academy & Cheshire Studio School Uniform – Years 7 – 11

Compulsory Uniform:

Navy Blazer with embroidered 'Academy' School logo	From SWI
School tie – clip on or traditional tie	From SWI
Plain white shirt	Any stockist
Black classic cut trousers – to be worn on the waist	Any stockist
Black box pleat skirt – to be worn knee length to mid-thigh	Any stockist
Smart all black shoes (more guidance provided below)	Any stockist
Plain black socks – from ankle to knee length	Any stockist
Plain black tights	Any stockist
Plain navy blue knit 'V' neck jumper - can be worn beneath the blazer but not instead of.	Any stockist
Plain black or navy Hijabs/head scarves	Any stockist

Following a student/parent uniform consultation (September 2023), the school have taken the decision to amend the uniform policy to reflect this feedback:

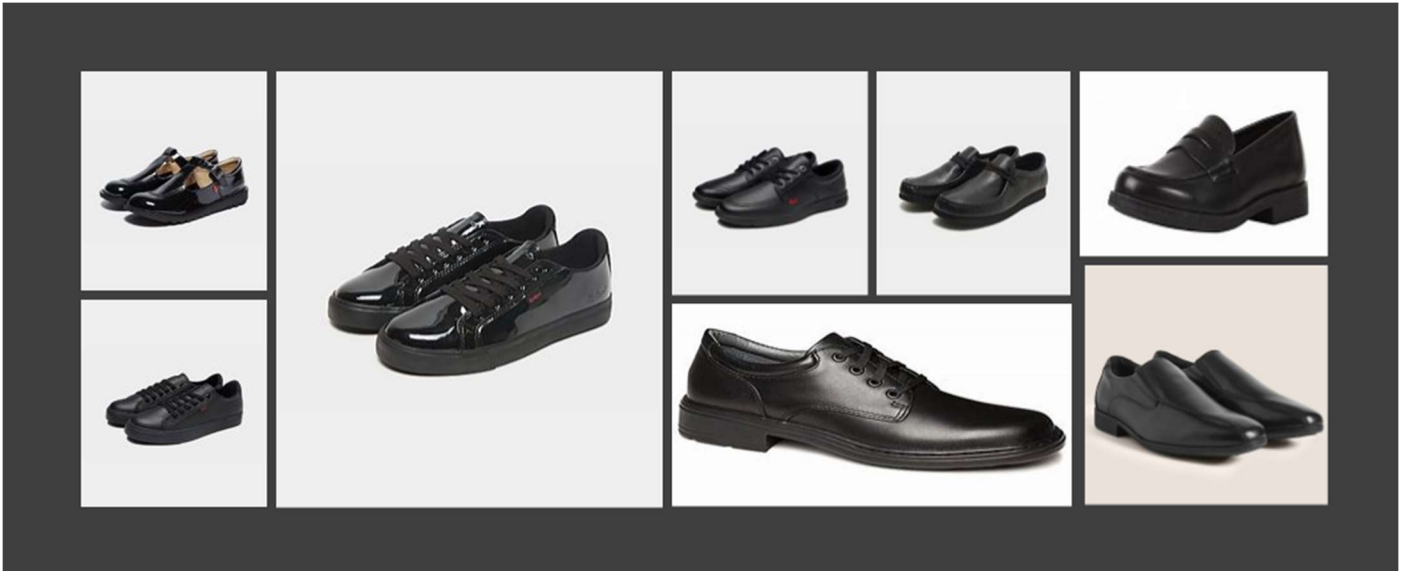
- Students at Knutsford Academy will wear only one blazer throughout and one tie (Year 7 to 11). These will be the Key Stage 3 designs. Students who already have the KS4 blazer and tie will be allowed to continue to wear them. The supplier holds a large stock of key stage 4 uniform – this will continue to be sold to parents and carers of students in current year 10 and 11, until it runs out.
- Students in Cheshire Studio School will continue to wear a different blazer to those students in Knutsford Academy. These will be provided by the school. They are identical in colour and fit but bear a different emblem. If you require a 'Studio' blazer, please contact your child's Head of Year.

Footwear

Please ensure that you are clear on the guidelines we provide and expect as a school before purchasing school shoes rather than being led by your child's fashion preferences.

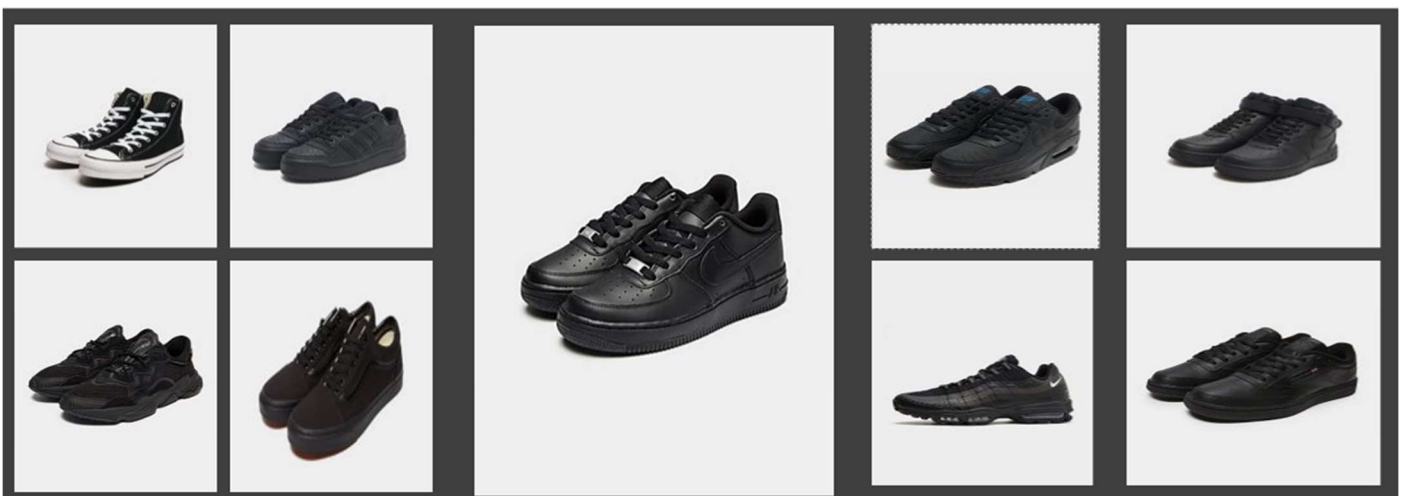
If you are in any doubt about the suitability of the shoe you are buying for school, please do not hesitate to contact your child's form tutor or Head of Year to avoid incurring additional cost.

Examples of suitable school shoes:



- Sensible, plain, all black traditional **shoes** should be worn for school – this **does** include the brand 'Kickers'.
- Sports trainers are **NOT** permitted to be worn with school uniform (Nike Airforce 1, Nike, Puma, Converse, Adidas, Vans). This also: No boots, canvas pumps or footwear with logos on them.
- Sports trainers are expected to be worn for practical lessons such as PE.
-

Examples of footwear that are **NOT** suitable for school:



Knutsford Academy & Cheshire Studio School

Students are expected to wear their school practical kit for PE/Dance/Drama lessons.

PE kit – Years 7 – 11

Navy/sky blue training top	From SWI
Navy/sky multi-sport top	From SWI
Navy/silver shorts	From SWI
Navy/silver training pants (optional)	From SWI
Navy thermal base layer (optional)	From SWI
Navy/silver coolmax socks	From SWI
Trainers & football boots	Any stockist
Compulsory for safety – shin pads	Any stockist
Recommended for safety – gum shield	Any stockist

* Please note - Only <u>one</u> of the following items are compulsory – shorts, leggings, skort.	
Navy/sky full zip training top	From SWI
Navy/sky training top	From SWI
Navy/silver training shorts *	From SWI
Navy/silver leggings *	From SWI
Navy/silver skort *	From SWI
Navy/silver training pants (optional)	From SWI
Navy thermal base layer (optional)	From SWI
Navy/silver coolmax socks	From SWI
Trainers	Any stockist
Compulsory for safety – shin pads	Any stockist
Recommended for safety – gum shield	Any stockist

- Long hair is expected to be tied up for PE. Students are expected to be equipped with a bobble as part of their kit if required.
- Sports trainers are expected to be worn for practical lessons, such as PE. ‘Fashion’ trainers or pumps are not suitable.
- If students are excused from PE, they are expected to have a note from parents/carers in their planner.
- All items of PE kit should be named to assist with returning items that have been left behind. Unnamed items are put into lost property.

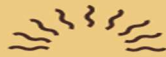
If students do not bring their own PE kit to lessons, they are expected to borrow spare kit and still participate.

Hair Styles / Make Up

- Extreme hairstyles are not permitted. These are defined as hairstyles which do not follow social conventions – closely shaven heads, unnatural colouring of hair.
- Long hair which presents health and safety issues must be tied back for PE, Performing Arts, Science, and practical technology lesson. Students are expected to be equipped with a bobble if required.
- Light, natural make up is permitted.
- Fake/acrylic nails are not permitted.

Halo Code

As part of our commitment to be an inclusive school community, we have adopted the Halo Code. This is a campaign pledge that promises members of the black community that they have the “freedom and security to wear all afro-hairstyles without judgement”. At our school we want to recognise and celebrate our staff and student identities.



The Halo Code

Our school champions the right of staff and students to embrace all Afro-hairstyles. We acknowledge that Afro-textured hair is an important part of our Black staff and students' racial, ethnic, cultural, and religious identities, and requires specific styling for hair health and maintenance.

We welcome Afro-textured hair worn in all styles including, but not limited to, afros, locs, twists, braids, cornrows, fades, hair straightened through the application of heat or chemicals, weaves, wigs, headscarves, and wraps.

At this school, we recognise and celebrate our staff and students' identities. We are a community built on an ethos of equality and respect where hair texture and style have no bearing on anyone's ability to succeed.

Jewellery

- A wristwatch may be worn.
- Smart watches are only allowed for telling the time and must not be worn when taking examinations. If students use their smart watch as a method of communication or recording, it is subject to confiscation (see mobile phone policy).
- Students are allowed to wear **one** small stud in each ear. A stud is defined as an earring that fits onto the lobe or edge of the ear but not below it.
- Nose studs are not permitted but a clear plastic retainer may be worn. Plasters are not permitted to be worn over a nose piecing.
- Students are not allowed to wear any other jewellery including rings and/or bracelets.
- Piercings should be done at the start of the summer holidays to allow time for healing. Students are not allowed to cover piercings with a plaster.

If students choose to wear jewellery that breaches these standards, and items are seen by staff they are subject to confiscation – confiscated items are kept securely until collected by parents or the items will be returned at the end of a half term.

Equipment for learning

Within the school bag students should have a base level of equipment to support their learning, this includes:

- Planner
- Reading book
- A pencil case is expected to contain the following:
 - Ruler
 - 2 x Handwriting pens – blue or black (black pens are required for examinations)
 - Pencil / Pencil Sharpener / Eraser
 - Calculator / Compass / Protractor

Optional items include - Highlighters, coloured pens/pencils

School bags

- Students school bags must be appropriate for carrying A4 books, pencil case/stationary, planner, and other necessary equipment/kit for school.
- Small handbags / 'man bags' are not permitted.

Additional

- Students are expected to always behave and move around the building in a calm and sensible manner.
- Students who request to leave lessons to go to the toilet are expected to have their planner signed by staff granting permission.
- Students are expected to take personal responsibility for their belongings. They should not bring expensive items into school - Students bringing in mobile phones/EarPods/smart watches, as with all other valuables, do so at their own risk. School cannot be held responsible for the loss, theft, or damage of such items.
- Students should not bring more money into school than they should reasonably need for food, drink, and travel.

Sixth Form Dress Code

Knutsford Academy teaches courses and offers opportunities for students to leave the academy with academic qualifications plus a whole range of experiences that develops confidence, builds resilience, and prepares students for the world of work.

Students are asked to carefully consider their appearance when attending the Sixth Form, wearing clothes that would generally be regarded as 'smart/casual'. This is to ensure that our students are role models and create a positive impression when interacting with staff, other year groups, visitors to the Sixth Form and our community.

Following feedback from students and parents, we have decided not to prescribe what students can wear, but rather provide guidance on that we deem unsuitable.

The following are not appropriate:

- Clothes with offensive slogans, words, or diagrams
- Visible underwear
- Headwear (see school's safeguarding policy)
- Visible tattoos
- Tube tops/anything strapless that is revealing, particularly if the garment exposes midriff.
- Skirts of an inappropriate length
- Shorts of an inappropriate length
- Wearing of coats during registration and timetabled lessons.