



Year 9 into 10 Options for September 2026

Science



Subject Overview

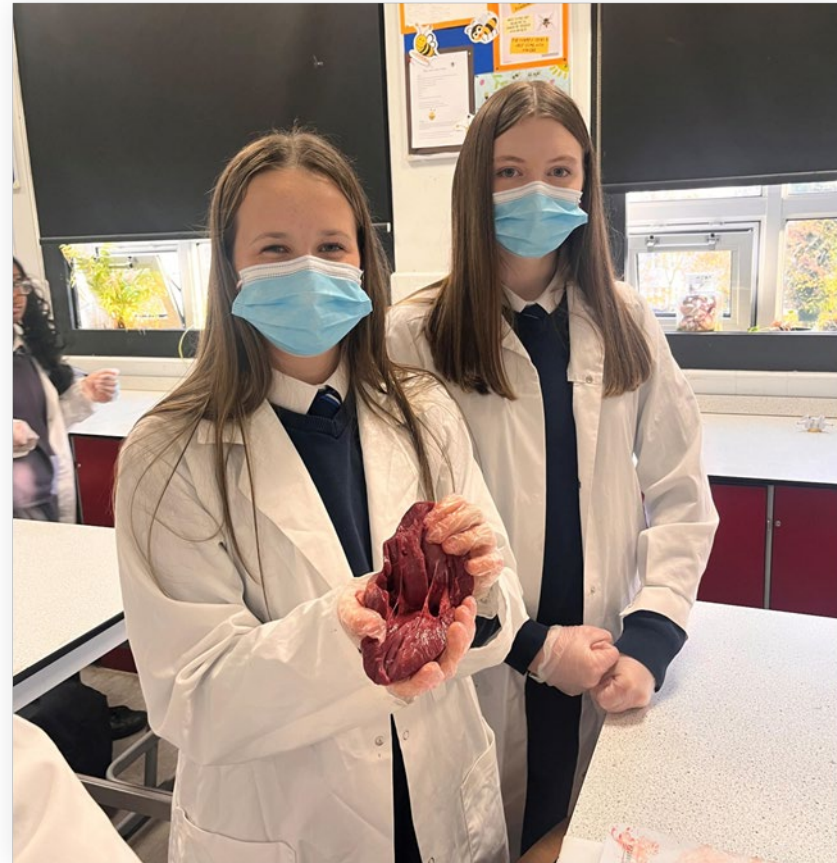
- GCSE Combined Science **or**
- GCSEs in Biology, Chemistry and Physics
- **GCSE Combined Science**
 - A combination of Biology, Chemistry and Physics
 - Equivalent to two GCSEs
 - 10 lessons per fortnight
- **GCSE Biology, Chemistry and Physics**
 - Three separate GCSEs: Biology, Chemistry and Physics
 - 15 lessons per fortnight



Science

Why choose GCSE Biology, Chemistry and Physics?

- You enjoy science (a lot)!
- You would like to cover the content in more depth than GCSE Combined Science
- You want great preparation for A-level sciences



Science

Subject content

Biology:

- Cell biology
- Organisation
- Infection and response
- Bioenergetics
- Homeostasis and response
- Inheritance, variation and evolution
- Ecology

Chemistry:

- Atomic structure and the periodic table
- Bonding, structure, and the properties of matter
- Quantitative chemistry
- Chemical changes
- Energy changes
- The rate and extent of chemical change
- Organic chemistry
- Chemical analysis
- Chemistry of the atmosphere
- Using resources

Physics:

- Forces
- Energy
- Waves
- Electricity
- Magnetism and electromagnetism
- Particle model of matter
- Atomic structure
- Space physics (**Triple Science only**)

Science

How is it assessed?

- Exams will be in May/June 2028 (the end of Year 11)
- GCSE Combined Science
 - There are six papers: two biology, two chemistry and two physics.
 - All 1 hour 15 minutes
- GCSE separate sciences
 - There are six papers: two biology, two chemistry and two physics.
 - All 1 hour 45 minutes

Is Triple Science the right choice?

Suitability for Triple Science

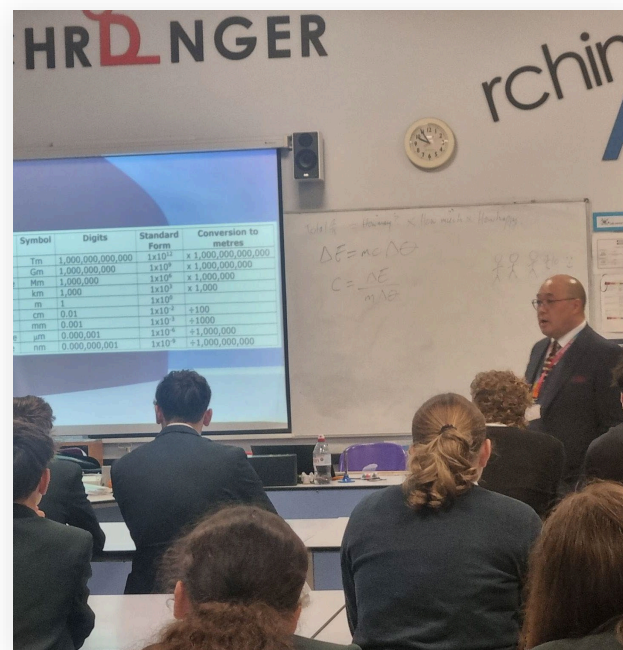
Triple Science suits students who enjoy science, excel in current lessons, and can manage a heavier workload.

Skills and Attributes Needed

Success requires comfort with scientific vocabulary, strong math skills, and resilience with challenging concepts.

Career and Academic Benefits

Triple Science benefits students aiming for STEM careers or science A Levels, offering clear academic advantages.



Contacts

- Mrs Emma Riley, Head of Science & Head of Biology: ery@knutsfordacademy.org.uk
- Mrs Victoria Trull, Head of Physics: vtl@knutsfordacademy.org.uk
- Mr Ben Albery, Head of Chemistry: bay@knutsfordacademy.org.uk