

School Newsletter

29th April 2022

Ladybridge Learning Conversations

Do you ever ask your child, 'What have you been learning at school today?', and they respond, 'Nothing'? Well, ask them these questions instead, and see what they say! We'll be sending home two weekly questions per year group to support your learning conversations at home. Look out for these on Class Dojo and here on the newsletter!

| | |
|-----------|--|
| Reception | <ul style="list-style-type: none"> • Can you finish a counting pattern, 12, 13, 14...? • Can you describe what a traditional English house looks like? |
| Year 1 | <ul style="list-style-type: none"> • What do you know about Mary Seacole? • Can you count in tens until you reach 100? |
| Year 2 | <ul style="list-style-type: none"> • Can you tell somebody at home three facts about L.S Lowry? • Can you find things in your home that do full, quarter, half or three quarter turns? For example, a microwave can do a full turn. |
| Year 3 | <ul style="list-style-type: none"> • What did the Romans bring to Britain? • Which fraction is the smallest - $\frac{2}{5}$ or $\frac{4}{5}$? |
| Year 4 | <ul style="list-style-type: none"> • What are the five categories of vertebrates? • How do we make a tint and why are they used in paintings? |
| Year 5 | <ul style="list-style-type: none"> • Explain how you round decimals to the nearest whole number or the nearest tenth. E.g. 28.73 • Describe what soluble and insoluble means and give some examples of materials that have these properties. |
| Year 6 | <ul style="list-style-type: none"> • What do the angles total...around a point? On a straight line? In a triangle? • What is the difference between a command and a statement? |

Q & A Time

Q. Why do you need to come to parents' evening and what are you looking for in books?

A. This is a really important opportunity for you to see your child's books and to check how well they are doing, what areas of learning they need extra help with and what you can do to support school. This will be our first face-to-face parents' evening in over 2 years (I hope you're looking forward to it!) When you arrive, you'll have time to look through your child's books and check their learning over the last two terms!. These questions might help you:

Q. Is their handwriting and presentation improved and is it consistent?

Q. Is there evidence of them getting things wrong and are they having to 'grapple' with their learning?

Q. Is there a broad range of interesting, engaging activities?

Q. Are they responding to feedback and marking?

Q. Is there clear evidence of improvement and progress from the first page to the last?

Q. Are they managing to remember and recall previous learning (see their 'check-its')

Q. Are they spelling common words correctly?

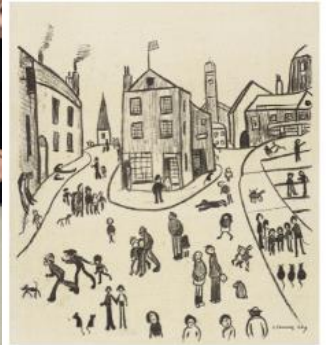
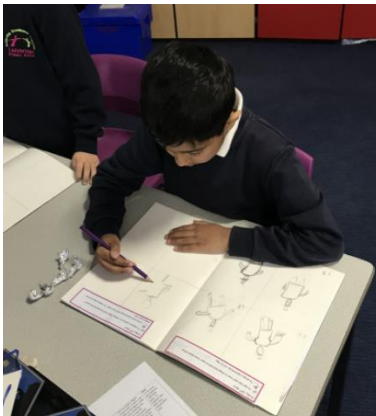
Q. Are they using adventurous vocabulary?

Q. Are they doing better at some subjects than others?

Q. Are they working hard every lesson, every day?

Class Focus

Each week, we focus on work undertaken by a different class. This week, it was the turn of 2L who say ... In Art we have been looking at the famous artist, L.S Lowry. He was from Manchester and was famous for drawing and painting industrial landscapes in the 1950's. These paintings often included 'matchstick men'. We have been practising our sketching skills by drawing our own matchstick man in the style of Lowry.



2nd & 3rd May
School closed

4th & 5th May
(times vary according to
teacher availability)
Parents' meetings will
take place face-to-face
(online booking).

20th May @ 9.15am
Y4 Class Assembly
(all Y4 parents welcome)



**Happy Eid to all
our children and
families who will be
celebrating Eid
over the next few
days.**

**DON'T FORGET...
NEXT WEEK,
SCHOOL WILL OPEN
ON WEDNESDAY 4TH
MAY!**

Please note that the summer term's staff training day has been deliberately diared to coincide with Eid, to enable school to be closed on Tuesday. This ensures that pupils celebrating Eid are back in school as normal on Wednesday.

A huge thank you to the wonderful group of volunteers who helped make the Eid Secrets' Room such a success this week. PTFA events, like this, are only able to take place with your help. We hope to have our summer fair back this year, so if you can help with this or with any other event, please contact ptfaladybridge@gmail.com.

Do you have any spare wrapping paper? The PTFA would love any wrapping paper donations to help support their secrets' room activities throughout the year (they do at least 4, so they go through a lot of wrapping paper!).





EVERY day
counts
attendance matters

Attendance Matters

Be in school all day, every day.
Our attendance target is 96.5%



| | |
|---|--|
| This Week's Attendance 😊 95.4% 😊  | Class with the Best Attendance 😊 3L - 97.9% 😊  |
|---|--|