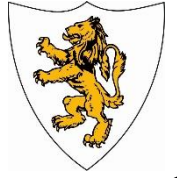


Archer Class Newsletter



Term 6

English

We will be heading in to space with 'Look Up'; a book we have read previously in our book talk sessions. This time we will be finding out about Meteor Showers, creating posters and writing a retell as the main character, Rocket.

As we come to the end of the year, the children will be encouraged to edit their work themselves before showing an adult. We continue to work on handwriting and perfecting our sentence structure ready for the exciting challenges in Year 2!

Maths

The children have become really speedy at number bonds with numbers to 20. Please continue to quiz your children on this as this will really help when working with bigger numbers.

Alongside our number sense sessions we have three very practical topics; time, mass and capacity and money. Please see the knowledge organiser on the newsletter to become familiar with the concepts and language we will use in school.



Topic – Oh I do like to be beside the seaside.

Mary Anning discovered the plesiosaur not far from here, in Dorset on the Jurassic Coast – what a great find! The children will be fossil hunting, learning about the Jurassic Coast and visiting the beach in the hope we can find more fossils and treasures of the time! It is a great topic to dive into the coast local to our area.



What else are we learning?

During PE this term we will be playing cricket as well as getting ready for Sports Day. Our jigsaw focus will be 'change'. This starts with us looking at how we have changed from when we were a baby and the things we can now do. It leads nicely on to transition and coping with change to a new class. In RE we will be learning to empathise with Jewish children by understanding how it feels to take part in Chanukah activities.

What do we need to remember?

Every day:

1. Reading Folders (books will be changed on a Monday and Thursday)
2. A bag of spare clothes to be left in your child's box (including socks!) please.

Please can we ask that any spares your child has borrowed are washed and returned promptly. Thank you!

Thursday:

PE

Friday:

Forest School, please wear PE kit to school and have waterproofs/wellies in school. Please remember that even when it is warm, it is important children wear long sleeves/bottoms to forest school. They can of course change in to summer PE kit if needed after the outdoor learning session.

What can you do at home?

Continue to read daily with your child. Please find attached number and letter formation sheets to use at home. Write numbers to 20 in numerals and words. 😊

Please don't hesitate to ask if you need support with the above.

Oh I do like to be beside the seaside!!!

What can you find at the Seaside and what is it like there?

Vocabulary	Definition
archipelago	A group of islands
beach	A strip of pebble or sand where the land meets the sea.
cave	
coast	The edge of the land where it meets the sea
coastline	The line of coast around the edge of a country or continent
cove	A small beach
cliff	A steep rock face that goes down to the sea.
habitat	The natural home of a living thing
headland	A high piece of cliff that juts out into the sea
harbour	A sheltered place where ships shelter
island	Land surrounded on all sides by water
jetty	A small man made pier where boats can stop.
lifeboat	A boat designed to rescue people in trouble at sea
lifeguard	Someone specially trained to keep people safe in the water
lighthouse	A tall building with a light that warns ships away from the rocks.
ocean	A large area of water that separates continents
port	A town or city with a harbour where boats can load and unload
pier	A long structure jutting out from the shore into the sea.
pollution	When something is put into the sea that does not belong there and could be harmful
rockpool	A habitat for sea creatures and plants made by the tide filling up gaps in the rocks
sand dune	A hill made of sand that has been blown into a heap.
seaweed	A plant that grows in seas and oceans
shoreline	The very edge of the sand or pebbles that meets the sea
tide	The pull of the sea which makes it move across the sand throughout the day.
trawler	A large boat that is designed to catch fish.
tourists	People who visit a place
wave	The way that the sea build up and pushes to the shore.

Where do people work at the seaside?



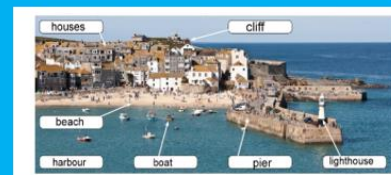
Where is the seaside?

England is part of the British Isles. It is surrounded by sea and has coastline all around it.

Some towns and cities like Salisbury and Larkhill are inland and other like Penzance and Poole and Lyme Regis are on the coast. Coastal towns are known as Seaside towns.



What can I find at the seaside?



Where is Lulworth Cove and what is it like?



What are rockpools and how are they formed?

Rockpools are left behind at low tide when the tide goes out and water stays in amongst the rocks. They are a habitat for all sorts of creatures.



Why do we have lighthouses on the coast?

A lighthouse is a big tower with a light at the top. They were built near places where lots of ships sailed. The light warned sailors that land was near and that they needed to sail further away.



Portland Bill

Where is the Jurassic coast and what happens there?

The Dorset coast is known as the Jurassic coast because many fossils of dinosaurs have been found there. Mary Anning is famous for making important fossil discoveries at Lyme Regis.



How do we make sure we are safe on the coast?

Each coastal town has an RNLI station.

Lifeguards and lifeboat men and women help to keep us safe.



Year 1 Term 6

The Colin is heavier than Coco
so Coco is lighter than Colin.



The spoon holds less than the bottle
The bottle holds more than the spoon



www.randommathclub.co.uk

Free product is licensed for exclusive use by The Purchasing Institution

www.buzzardpublishing.com

Bronze coins



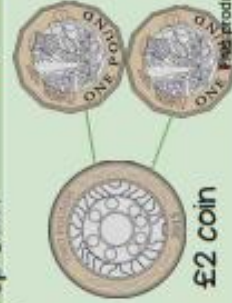
2p coin 1p coin



Silver coins



20p coin 10p coin



£2 coin

Notes



£1 coin

50p coin



4 o'clock



7 o'clock



Half past 4



Half past 10



May						
M	T	W	T	F	S	S
	1	2	3	4	5	6
7	8	9	10	11	12	13
14	15	16	17	18	19	20
21	22	23	24	25	26	27
28	29	30	31			

Today is Wednesday 16th May
Tomorrow is Thursday 17th May
Yesterday was Tuesday 15th May

January February March April May June July August

September October November December

the a do to today of said says are

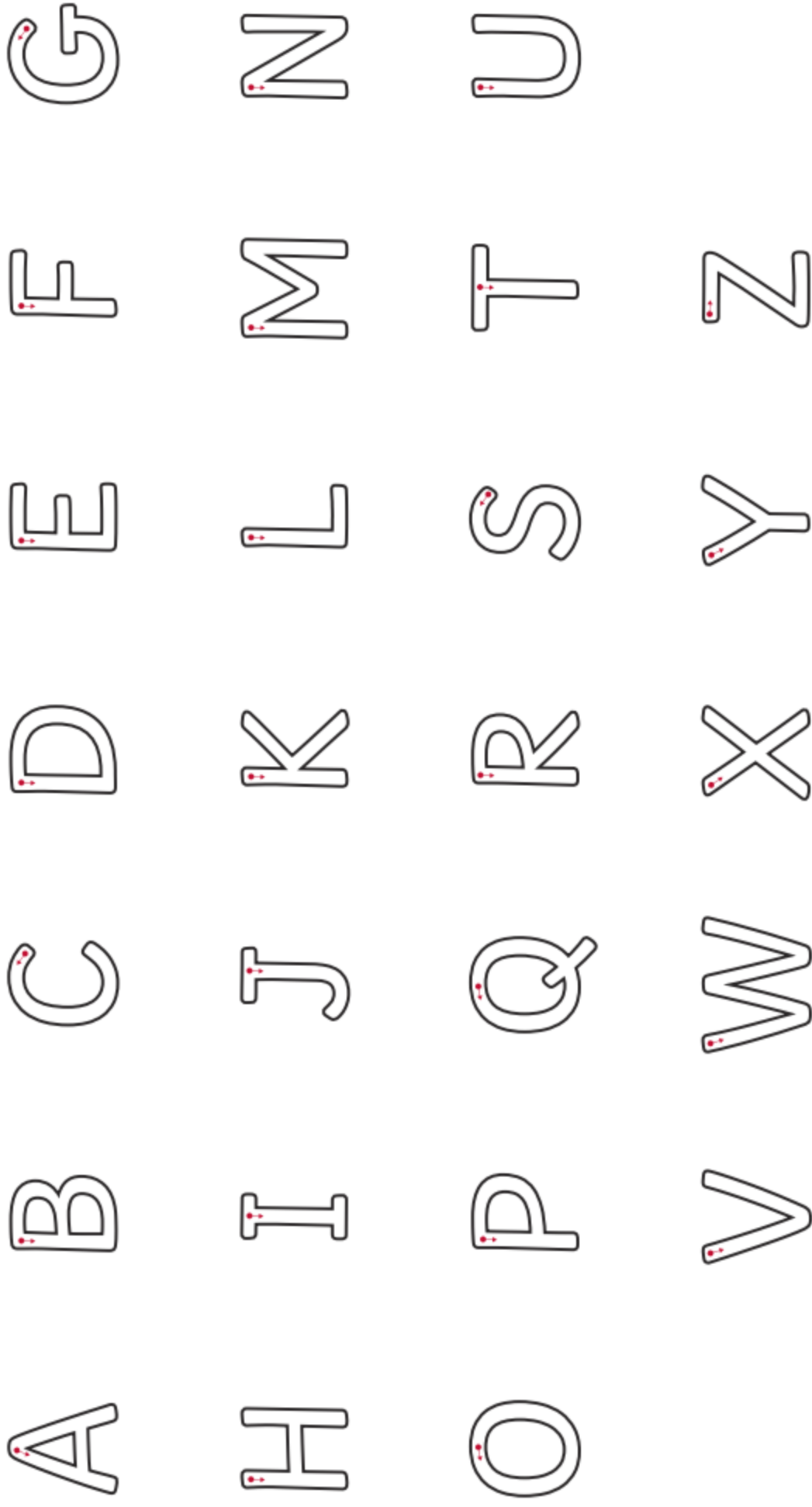
were was is his has I you no we

she me he they go so by

my here there where love come some one once

ask friend school put push pull full house our

These words will be introduced throughout the year. Please practise reading and writing them at home to support your child's writing and spelling development.



Practise forming capital letters and talk to your children about when we use them (beginning of sentences/names of people/places, days of the week and months of the year as well as for 'I'). You could also play a game where you say the sound and your child write the corresponding capital letter.

0 0 0 0 0 0 0 0 0

1 1 1 1 1 1 1 1 1

2 2 2 2 2 2 2 2

3 3 3 3 3 3 3 3

4 4 4 4 4 4 4 4

5 5 5 5 5 5 5 5

6 6 6 6 6 6 6 6

7 7 7 7 7 7 7 7

8 8 8 8 8 8 8 8

9 9 9 9 9 9 9 9

10 10 10 10 10 10 10

11 11 11 11 11 11 11

12 12 12 12 12 12 12

13 13 13 13 13 13 13

14 14 14 14 14 14 14

15 15 15 15 15 15 15

16 16 16 16 16 16 16

17 17 17 17 17 17 17

18 18 18 18 18 18 18

19 19 19 19 19 19 19

20 20 20 20 20 20 20

1	one		
2	two		
3	three		
4	four		
5	five		
6	six		
7	seven		
8	eight		
9	nine		
10	ten		

11	eleven		
12	twelve		
13	thirteen		
14	fourteen		
15	fifteen		
16	sixteen		
17	seventeen		
18	eighteen		
19	nineteen		
20	twenty		