



## RECRUITMENT PROSPECTUS 2024

“

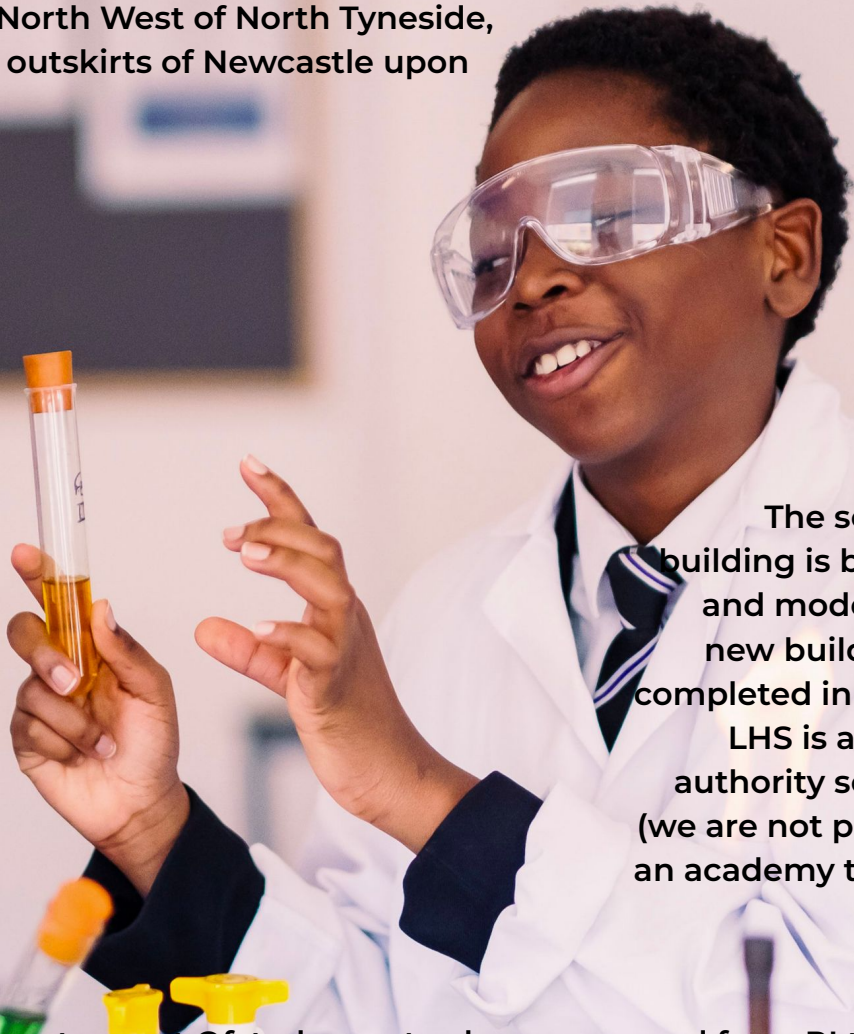
**Longbenton High  
is a caring school**

—  
OFSTED, June 2022



**LONGBENTON  
HIGH SCHOOL**

Longbenton High School is a highly aspirational, truly comprehensive 11-18 secondary school of around 1,000 students, in the North West of North Tyneside, on the outskirts of Newcastle upon Tyne.



The school building is bright and modern: a new build was completed in 2016. LHS is a local authority school (we are not part of an academy trust).

Our most recent Ofsted report, when we moved from RI to Good, illustrates how rapidly we have changed and improved in the last few years.

We are a growing school: we have shifted historic admissions patterns and are now oversubscribed.

*“Recently appointed leaders have raised the expectations they have of pupils. Because of this, the school and pupils’ work has improved. Behaviour around the school site is calm and purposeful. Many pupils have positive attitudes towards their learning.”*

OFSTED, June 2022





## WHAT MAKES US SUCH A SPECIAL PLACE TO LEARN AND WORK?

100%

Staff feel “proud to work” here

100%

Staff feel supported by colleagues

90%

Staff agree “SLT are doing a good job”

90%

“Behaviour has improved”

Our school is shaped by a culture of inclusion, equality, diversity and mutual respect. There is no hidden agenda: we just want to be the best school we can be for our local community.

Social mobility is important to us: we want to open doors for our students through experiences and enrichment opportunities that broaden their horizons.

Our school is about instilling confidence and building foundations for success so young people can *'Evolve, Discover, Create, Perform and Achieve'*.

We have a **Warm:Strict** approach which means the same high standards and expectations for everyone regardless of **background** and starting point.

Our traditional 'KIDMAP' values of kindness, integrity, determination, manners, ambition and positivity are what we live by.

The teacher is the expert in the classroom. The curriculum is the progression model and the class teacher leads that. Our systems and routines are designed to take away cognitive load so that students can focus on this.

We have a traditional curriculum model with no narrowing.

Our staff are our most precious resource. We know that working in education can be challenging. Our senior team are committed to **supporting** staff to thrive and make this a great place to work.



# OUR VALUES

# YOUR CAREER

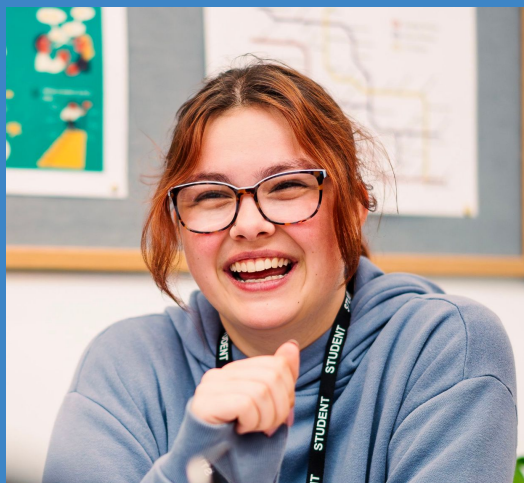


# STARTS HERE

*“The staff in both the wider school and within my department have made me feel welcomed and supported. Everyone is helpful and friendly - they make LHS a lovely place to work.” - First year ECT*



Our ECT Induction programme ensures that your future career and professional development is well supported. We nurture your professional skills by providing a supportive yet challenging structure, including regular coaching and weekly mentoring, where you can flourish and build the highest standards of learning and teaching.



## Our aims for all staff are:

A focus on clear priorities - without 'drowning' staff in new initiatives

*An evidence informed approach to CPD, including plenty of opportunity for support-staff relevant CPD*

An open-door culture where best practice is shared and celebrated

*To be mindful of teacher workload and ensure staff have a sensible work/life balance*

To develop and nurture talent and our own excellent leaders, who in turn are able to nurture their own high performing teams



We work with Three Rivers Teaching Hub to support our ECT induction and NPQ programmes. Additional ITT partners are WBHS School Direct & Newcastle University PGCE.

# OUR STAFF

*“Having worked here since 2008 I have been able to progress from NQT to middle leadership. The school have supported me to complete my M.Ed in Practitioner Enquiry and more recently the NPQLBC giving me the experience, skills and confidence to start preparing for future roles as a senior leader. The students are a real pleasure to work with and are very loyal - I really value teaching a range of abilities and levels which challenges me to keep my subject knowledge and pedagogy up to date. Having worked here for a long time I appreciate the links made with families in the community. The staff are supportive, kind and caring and there is a real team ethos; as working in education becomes ever more challenging I am so pleased to be working in school where I feel valued and supported.”*

**“I have been fully trusted in my role as a middle leader to ensure we give our students the best possible chances for their future.”**

*“Working at Longbenton is being part of a team; we look out for each other and always do everything we can to support our team mates. There is a strong sense of pride here in what we do and what we continue to strive to achieve together. Having been at Longbenton High School for almost 15 years, I feel happy and secure in a great community. This is a school where I am listened to and valued.”*

**“Longbenton has been the best and only place where I would have wanted to start my career. I have been nurtured here since I arrived whilst on my ITT placement and encouraged every day since. I have been so lucky to work within an incredible department, who are supportive day and day out. We have become a family. Leadership have always trusted my practice and despite being in the early stages of my career, I have been given many opportunities to enhance and progress both within my own classroom and within the school leadership team. I am exceptionally grateful to be part of this team.”**

# OUR STAFF

*"I look forward every day to working at Longbenton High School. I most love how the leadership culture of the school is a culture of genuine desire to raise up, dignify and empower all human beings - both students and staff. Longbenton is a caring and supportive school. I feel 'seen' here and I appreciate that so much. The high standards held by the school have their foundations in real appreciation for people as well as wanting students to perform well in exams. I have stayed at Longbenton High School for many years as a conscious choice because it is such a happy and dynamic environment in which to work."*

## THANK YOU FOR TAKING AN INTEREST IN JOINING LHS.



**Kelly  
Holbrook**

**Headteacher**

Our recruitment vacancies provide an exciting opportunity to join a strong team in a vibrant, happy, inclusive school and to make a real difference to the lives of our young people. We work together closely, openly and honestly without any jostling over ego or status. We are looking for staff who can bring passion, expertise, fresh eyes and healthy challenge; but who can work collegiately and collaboratively too. We want teachers and support staff who can make an immediate impact, but you will also get plenty of support to help you succeed as you grow into your role, whatever the career stage.

LHS really is a great place to work. Our students are brilliant. We really care about them and their futures and pride ourselves on excellent relationships. You can see them - and us - and get a better sense of what we are about in our promotional films on our website and on our social media channels.



“

**Pupils enjoy school...  
have positive attitudes...  
and become confident  
young people**

—  
OFSTED, June 2022




### Contact us to arrange a visit...

Hailsham Avenue, Longbenton,  
Newcastle upon Tyne, NE12 8ER

**Telephone** 0191 218 9500  
**Email** [lhs@longbenton.org.uk](mailto:lhs@longbenton.org.uk)  
**www.longbenton.org.uk**

 @longbentonhs

 @longbentonhs

 @longbenton\_high\_school



**LONGBENTON**  
HIGH SCHOOL