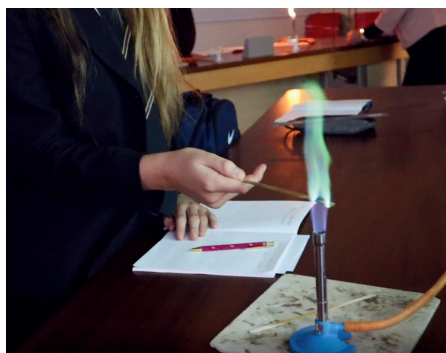




YEAR 10 SUBJECT BOOKLET





ART AND DESIGN

GCSE - AQA



COURSE OVERVIEW

GCSE Art and Design will give you an insight into artistic practice through a variety of topics and themes. These range from personal identity to natural form and from 3D design to other cultures.

You will be taught through practical tasks, class discussions, homework, individual tuition, independent study and gallery visits.



WHAT'S COVERED?

- Drawing skills
- Coordination and creative skills
- Drawing and painting techniques
- Printing and 3D studies
- Understanding of artist styles and approaches to work/context

ASSESSMENT

You will complete set portfolio coursework tasks which will be assessed by your teacher, who will give you a progress mark and feedback. This will account for 60% of your final grade.



There is also an externally set task with extended preparation time and 10 hours of sustained focused study. This accounts for 40% of your final grade.

STAFF COMMENT

"GCSE Art and Design allows students to express themselves through a variety of media and techniques. Students will keep a sketchbook for inspiration and learn about the History of Art as well as completing a portfolio of artwork as coursework."



NEXT STEPS

This can lead to further study post 16, either A-levels or vocational qualifications. It can also lead to careers in fields such as TV, film, fashion and set design.

For more information, contact Mr Lonsdale.

ASPIRATION - ENDEAVOUR - INTEGRITY - RESPECT



BUSINESS

GCSE - PEARSON



COURSE OVERVIEW

GCSE Business aids students in gaining a detailed understanding of the aims of businesses, different types of businesses and how businesses operate. There is a focus on small businesses and the entrepreneurial skills required to run them.

STUDENT COMMENT

"Business has helped me understand why businesses make certain decisions and the impact they have. It's great to be able to see what I learn in class working in a real world situation."



WHAT'S COVERED?

- Enterprise and entrepreneurship
- Putting a business idea into practice
- Economic Context
- Marketing, Financial, Operational and Human Resource decisions
- How to 'grow' a business

ASSESSMENT

All examinations take place at the end of Year 11. There are 2 examinations, both worth 50% and they consist of calculations, multiple-choice, short-answer and extended writing questions. Some questions are based on business contexts.



NEXT STEPS

This course can lead to A-level or vocation courses in Business Studies or related subjects such as Economics or Travel and Tourism.

For more information, contact Ms Fitzpatrick or Mrs Fowler.

ASPIRATION - ENDEAVOUR - INTEGRITY - RESPECT



COMPUTER SCIENCE

GCSE - PEARSON



COURSE OVERVIEW

Computer Science will allow you to develop a greater understanding of how computers really work and how technology is best used in an ever-changing society. You will learn to solve problems using creative, technical and coding skills.

STUDENT COMMENT

"Computer Science has allowed me to understand the complex decisions computers make and I've really developed my coding skills. The subject is always changing and this keeps it interesting, e.g. cyber-crime."

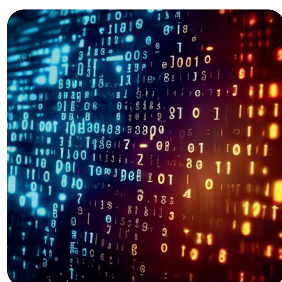


WHAT'S COVERED?

- Developing an understanding of current and emerging technologies
- Algorithms in programming
- Making decisions about using ICT
- Developing computer programs to solve problems

ASSESSMENT

The qualification is made up of 2 written papers which are taken at the end of Year 11. This will include both short answers, essay style questions and an on-screen programming exam.



NEXT STEPS

This course can lead onto further study of Computing or ICT at vocational, academic and degree level. Careers related to science or Mathematics would benefit from programming skills.

For more information, contact Ms Fitzpatrick or Mr Williams.

ASPIRATION - ENDEAVOUR - INTEGRITY - RESPECT



WHAT'S COVERED?

- ## ASSESSMENT

STUDENT COMMENT

NEXT STEPS

ASPIRATION - ENDEAVOUR - INTEGRITY - RESPECT



DRAMA

GCSE - AQA



COURSE OVERVIEW

You will learn how to understand and respond to a range of play texts and stimuli and create the desired impact for your audience. You will investigate social, historical and cultural influences in society through dramatic presentation or through workshops with industry professionals.

STAFF COMMENT

"Students who enjoy Drama GCSE tend to enjoy working as a team and collaborating in order to create work for a live audience to enjoy. Your oracy skills will improve rapidly and you will find that as a result of this you have more confidence to speak in other subjects."



WHAT'S COVERED?

- Performance of a scripted play
- Creation and performance of a group-devised piece
- Analysis and evaluation of a set text and of live professional theatre performance.

ASSESSMENT

You will be assessed in three ways:

- Rehearsal and performance of devised and scripted work
- Written analysis of this work
- Written analysis of a set text and professional live performance
- 60% of your assessment is a written examination and 40% is practical



NEXT STEPS

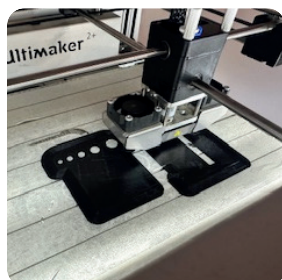
Students go on to study Drama, Performance and Theatre Studies at Post-16 level and in vocational training at Drama schools. Study of Drama enhances confidence and technique in courses and professions that involve public speaking, communication and presentation skills.

For more information, contact Mr Smith.

ASPIRATION - ENDEAVOUR - INTEGRITY - RESPECT

ENGINEERING MANUFACTURE

CAMBRIDGE NATIONAL LEVEL 1 / 2 OCR

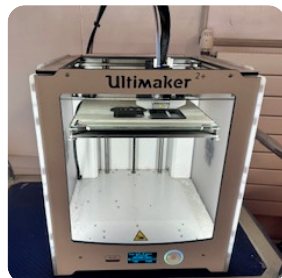


COURSE OVERVIEW

The course will encourage students to understand and apply the fundamental principles and concepts of Engineering Manufacture. Including manufacturing processes, engineering materials, manufacturing requirements and developments in engineering manufacture.

STAFF COMMENT

"This is an exciting subject which is closely linked to science, engineering and maths. According to leading manufacturing and engineering companies, STEM-based subjects are favoured when recruiting candidates for jobs. Engineering is a growth industry in the UK."



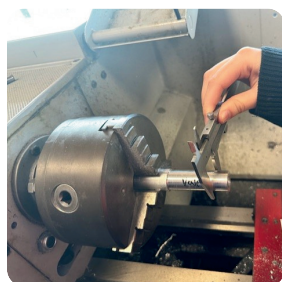
WHAT'S COVERED?

The course is made up of 3 units:

- Principles of engineering manufacture – Externally assessed examination
- Manufacturing a one-off product – NEA (Non-Examined Assessment)
- Manufacturing in quantity – NEA

ASSESSMENT

The two NEA units are assessed through internal written and practical work. The external assessment unit will be a written examination.



NEXT STEPS

- A Levels as preparation for entry into higher education in a range of STEM subjects.
- The subject has links with local engineering companies.
- Study of a vocational qualification at Level 3, such as a BTEC National in Engineering, prepares learners to enter employment or apprenticeships, or to move on to studying a degree in engineering.

For more information, contact Mr Howard.

ASPIRATION - ENDEAVOUR - INTEGRITY - RESPECT



ENGLISH LANGUAGE

GCSE - EDUQAS

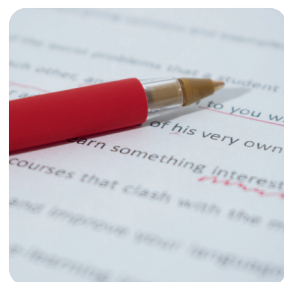


COURSE OVERVIEW

By the end of your course you will have developed your English skills to the point where you can express yourself in a wide variety of situations, both in written form and orally. You will develop the ability to write discursively and persuasively. You will acquire many transferable and vital life skills.

STUDENT COMMENT

"I love English Language and it has helped me learn more about different styles of writing. I am now hoping to progress to A-Level English language to develop my skills further".



WHAT'S COVERED?

- Non-fiction (19th Century and 21st Century)
- Fiction texts

ASSESSMENT

There is only one tier of entry, which allows you to achieve grades 9-1. The qualification is 100% examination with spelling, punctuation, vocabulary and grammar comprising 20% of the final grade.



NEXT STEPS

The wide range of texts that you will study will be the basis of a life-long enjoyment of reading. Developing your skills in English to gain the best possible grade is vital for progress into further education or a career.

For more information, contact Mrs Smith.

ASPIRATION - ENDEAVOUR - INTEGRITY - RESPECT



ENGLISH LITERATURE

GCSE - EDUQAS



COURSE OVERVIEW

Studying English Literature will help you develop skills to respond to texts critically, sensitively and in detail. You will be able to consider different approaches to texts and alternative interpretations. You will be able to relate texts to social, cultural and historical contexts and literary traditions.

STUDENT COMMENT

"I like studying English Literature because I am able to read and engage with a range of texts from across a long period of time. It helps me in other subjects too like History."



WHAT'S COVERED?

You will study several texts during the course, including:

- Prose from 1789 to the present day
- Post 1914 drama
- 19th Century Prose
- Unseen poetry from the 20th and 21st century
- A play by Shakespeare

ASSESSMENT

English Literature is 100% examination. Students are not permitted to take copies of texts into the examination. Spelling, punctuation, grammar and vocabulary comprise 5% of the overall grade.



NEXT STEPS

This course is invaluable to those wishing to continue with arts based courses or for any course or profession requiring the ability to take a critical or analytical stance.

For more information, contact Mrs Smith.

ASPIRATION - ENDEAVOUR - INTEGRITY - RESPECT



FOOD, PREPARATION AND NUTRITION

GCSE - AQA



COURSE OVERVIEW

GCSE Food, Nutrition and Preparation will allow you to develop a wide range of practical skills that will be of value to you throughout life. These skills include developing practical food preparation techniques to a high level. You will be taught in a variety of ways, including research and practical activities such as sensory analysis and producing finished dishes and products.

STAFF COMMENT

"Students develop cooking skills and knowledge about nutrition and staying healthy. Students are able to make a variety of products."



WHAT'S COVERED?

- Food, nutrition and health.
- Food science
- Food safety
- Food choice
- Food provenance
- Food preparation

ASSESSMENT

The assessment consists of a 1 hour and 45 minute examination worth 50% of the grade. There are also two pieces of controlled assessment to be completed in Year 11: Food Investigation and Food Preparation.



NEXT STEPS

Vocational or A-level study including Food, Science, Product Design and PE. It can lead to jobs in the food industry, in nutrition, sports and science, dietetics and biology related careers.

For more information, contact Mrs Gittings.

ASPIRATION - ENDEAVOUR - INTEGRITY - RESPECT



GEOGRAPHY

GCSE - AQA



COURSE OVERVIEW

A GCSE in Geography will allow you to develop a deeper understanding of the world in which you live whilst developing analysis, enquiry, numerical, geographical and decision-making skills. During Geography lessons you will be encouraged to develop your knowledge and understanding using different teaching strategies and media. This knowledge and understanding are then applied to different enquiry questions.

STUDENT COMMENT

"Geography is learning about the real world and how it works. We investigate the impact that natural and human factors have on people and the environment. It is a subject that will give me great knowledge, understanding and skills that I can use in life and my chosen career."



WHAT'S COVERED?

- Fieldwork, numerical and geographical skills
- Natural hazards, including climate change
- Ecosystems focusing on tropical rainforests and hot deserts
- UK physical landscapes, including rivers and coasts
- Urban issues and challenges
- Changing economic world
- Resource management focusing on energy

ASSESSMENT

GCSE Geography is 100% examination. There are two compulsory fieldwork trips. At the end of Year 11 there will be three examinations.

NEXT STEPS

A-levels, degrees or various vocational courses, apprenticeships. Careers are wide ranging including business, environmental science, urban planning, and finance.



For more information, contact Mrs Gladwin or Mrs Evans.

ASPIRATION - ENDEAVOUR - INTEGRITY - RESPECT



COURSE OVERVIEW

GCSE German will give you an insight into the way of life and cultures of the many countries where the language is spoken. You will develop social skills, build confidence and develop better communication skills. You will have the opportunity to work independently, in pairs and in groups.

STUDENT COMMENT

“Learning a language broadens your opportunities, giving you the chance to delve in to a new culture and opening doors to new experiences.”

WHAT'S COVERED?

- Identity and relationships with others
- Healthy living and lifestyle
- Education and work
- Free-time activities
- Customs, festivals and celebrations
- Celebrity culture
- Travel and tourism
- Media and technology
- The environment and where we live



ASSESSMENT

You will be assessed on the four main skill areas:

- Listening
- Speaking
- Reading
- Writing

There will be three examinations and a speaking test. All examinations will take place at the end of Year 11.



NEXT STEPS

A German qualification will provide a strong foundation for further study and make you stand out from the crowd. German can be studied at A-level and University where it can be combined with a variety of other subjects.

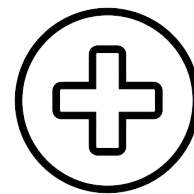


For more information, contact Frau Constable.

ASPIRATION - ENDEAVOUR - INTEGRITY - RESPECT



HEALTH AND SOCIAL CARE (OCR LEVEL 1/2) GCSE - AQA



COURSE OVERVIEW

This course has 3 units to complete across 2 years. One unit is an external examination, and the other two units are internal assignments or projects. The course encourages students to understand and apply the fundamental principles and concepts of the rights of individuals. Person-centred values, effective communication and how to protect individuals in Health and Social settings.

STAFF COMMENT

'This is an amazing subject to develop a range of skills and knowledge in health and social settings and apply it into real life context and work situations. The subject also closely links with other subjects such as Science, PE, English and Geography. This subject will benefit pupils who want to gain insights into different health and social care settings such as nursing, care worker, education and many more career pathways in the health and social care sector.'

WHAT'S COVERED?

For this qualification, students must complete three units:

- Unit no. R032- Principles of care in health and social care settings (External Exam)
- Unit no. R033- Support individuals through life events
- Unit no. R034- Creative and Therapeutic activities

ASSESSMENT

Students must complete:

- 1. One externally assessed unit (exam)
- 2. Two centre assessed units (NEA)

Grading:

All results are awarded on the following scale:

- Level 2- Distinction * (*2), Distinction (D2), Merit (M2), Pass (P2)
- Level 1- Distinction (D1), Merit (M1), Pass (P1) and Fail or Unclassified



NEXT STEPS

This course has been designed to progress onto the Cambridge Technical/Level 3 in Health and Social Care and the following apprenticeships:

- Adult Care Worker
- Health Care Science Assistance
- Allied Health Profession Support
- Health and Social Care
- Maternity and Paediatric Support



For more information, contact Miss Torres or Miss Whitehead.

ASPIRATION - ENDEAVOUR - INTEGRITY - RESPECT



HISTORY

GCSE - PEARSON



COURSE OVERVIEW

Our history course allows students to develop a broad understanding of history from medieval times through to the present day. You will be encouraged to debate historical issues, question the reliability of evidence and assess the extent of change. You will be taught using a range of resources from letters and diaries to video footage.

WHAT'S COVERED?

- Medicine Through Time, including a study of medicine in the WWI trenches
- Germany between 1918 and 1939, including Hitler's rise to power
- The Reigns of King Richard and King John
- Superpower Relations, 1941-1991 (Cold War)



ASSESSMENT

All assessment takes place at the end of Year 11 in three examinations.

STAFF COMMENT

"History is a fascinating subject. This course allows students to learn about significant leaders, discoveries, wars and events. There is something for everyone. History is also a great subject for providing you with analysis and research skills."



NEXT STEPS

GCSE History can lead to A-levels in history, law and politics. History students can go on to have future careers in journalism, television, law, politics or teaching.

For more information, contact Mrs Pountney.

ASPIRATION - ENDEAVOUR - INTEGRITY - RESPECT



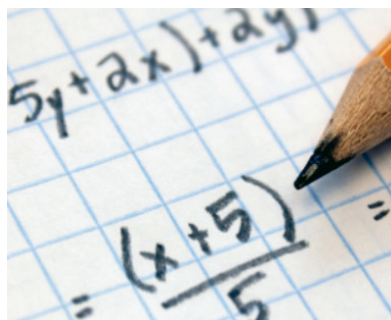
MATHEMATICS

GCSE - PEARSON



COURSE OVERVIEW

In GCSE Mathematics you will learn how to use algebra to solve problems, you will develop skills that will allow you to analyse and interpret data. You will further extend your number work and your understanding of geometry. You will be expected to make notes during lessons and consolidate new skills by working through problems set by the teacher.



STAFF COMMENT

"GCSE mathematics provides students with invaluable skills such as problem solving. These skills are transferrable to outside of the classroom and also to other subjects studied at GCSE. Mathematics is a key subject for entry to college courses."

WHAT'S COVERED?

- Number
- Ratio and proportion
- Algebra
- Statistics and probability
- Geometry

ASSESSMENT

There are two tiers of entry for GCSE mathematics:

- Foundation - Grades 1-5
- Higher - Grades 4-9



You will sit three examinations; one non-calculator and two calculator papers. All examinations are 1 hour and 30 minutes long.

NEXT STEPS

Success in GCSE Mathematics is a key life skill valued by colleges and employers alike. A standard or good pass may lead on to further and higher study.



For more information, contact Mrs Morton.

ASPIRATION - ENDEAVOUR - INTEGRITY - RESPECT



MUSIC

GCSE - PEARSON



COURSE OVERVIEW

You will develop skills in composing, listening and performing music, learn an instrument or learn to sing and create music on computers. Our listening examination is based on 8 pieces of Classical, Popular and World Music.

Important – In order to develop your individual performance you should have lessons on your instrument or voice as rehearsals do not take place during lesson time. Funding and support for this may be available.

WHAT'S COVERED?

Instrumental Music 1700–1820

J.S. Bach: 3rd Movement from Brandenburg Concerto no. 5 in D major

L. van Beethoven: 1st Movement from Piano Sonata no. 8 in C minor 'Pathétique'

Vocal Music

H. Purcell: Music for a While

Queen: Killer Queen (from the album 'Sheer Heart Attack')

Music for Stage and Screen

S. Schwartz: Defying Gravity (from the album of the cast recording of Wicked)

J. Williams: Main title/rebel blockade runner (from Star Wars)

Fusions

Afro Celt Sound System: Release (from the album 'Volume 2: Release')

Esperanza Spalding: Samba Em Preludio (from the album 'Esperanza')

ASSESSMENT

Performance (30%)

You will perform two pieces, one solo and one ensemble performance on an instrument (or voice) of your choice.

Composing (30%)

You will compose two pieces, one to a set brief and one as a free composition. We use the computers to compose.

Final examination (40%)

Our examination is based on 8 set works which we study in detail. In the examination you are asked a range of questions about what you can hear in the pieces using technical vocabulary.

NEXT STEPS

GCSE Music can lead to further study of music and music technology and onto careers in the fields of music, drama and teaching.



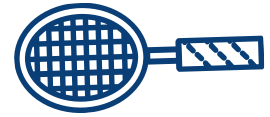
For more information, contact Mr Spacey.

ASPIRATION - ENDEAVOUR - INTEGRITY - RESPECT



PHYSICAL EDUCATION

GCSE - AQA



COURSE OVERVIEW

GCSE PE gives you a chance to learn the theory behind how to train, the effects and benefits. There is also a lot of Biology and Science involved in the course, covering the Cardiovascular and Respiratory system along with some Movement Analysis. We also cover sports psychology and the socio-cultural aspects. You will have five GCSE PE lessons per fortnight, one practical and four theory. Due to the practical assessment within this course, it is highly recommended that students play for a club or school team and take part in a range of extra-curricular sports on a weekly basis. Students will be assessed in three sports.



STUDENT COMMENT

"GCSE PE consists of more theory than practical, however is still fully enjoyable as the practical side supports my theoretical knowledge."



WHAT'S COVERED?

THEORY: 60%

PRACTICAL ASSESSMENT: 40%

The theory (60%) is made up of two written papers taken at the end of the two-year course. The practical assessment (40%) involves being assessed as a performer in three sports within a competitive situation as well as a written piece of controlled assessment.



NEXT STEPS

Careers in teaching, coaching, analysis, strength and conditioning, jobs in the leisure industry or in the emergency services.

For more information please contact Mrs Harrison.

ASPIRATION - ENDEAVOUR - INTEGRITY - RESPECT



RELIGIOUS STUDIES

GCSE - AQA



COURSE OVERVIEW

The GCSE RS course will provide students with a thorough understanding of the religions of Christianity and Judaism and how these religious views are applied to moral issues in the world today. There will be an emphasis on active learning, including the use of discussion and informed debate.

WHAT'S COVERED?

- Beliefs and Practices of Christianity
- Beliefs and Practices of Judaism
- Relationships and Families
- Religion and Life
- Religion, Peace and Conflict
- Religion, Crime and Punishment



STAFF COMMENT

"Studying Religious Studies at GCSE will provide you with a deeper understanding of Christianity and Judaism. In addition, you will gain an informed understanding of the perspectives held towards some of the moral issues that we are presented with in the world today. GCSE Religious Studies will develop your discussion skills, debating skills and empathy."

ASSESSMENT

- You will sit two examinations at the end of Year 11 for GCSE Religious Studies. Each is worth 50% of your GCSE:
- Paper 1: Beliefs and Practices of Christianity and Judaism
- Paper 2: Thematic Studies (Relationships & Families, Religion & Life, Religion, Peace & Conflict, Religion Crime & Punishment).
- General spelling, punctuation and grammar are considered in the mark scheme for the extended written answers.
- There is no coursework.

NEXT STEPS

Religious Studies is of value to any career or educational course. A GCSE in Religious Studies shows that you have a deep understanding of religions, moral issues and people, which shows that you can make intelligent and informed judgements.

For more information, contact Miss. De Freitas.

ASPIRATION - ENDEAVOUR - INTEGRITY - RESPECT



SCIENCE

(COMBINED SCIENCE)

DOUBLE AWARD GCSE - AQA



COURSE OVERVIEW

This is a concept-led course developed to meet the needs of students seeking an understanding of basic scientific ideas. The course focuses on scientific explanations and models and gives candidates an insight into how scientists develop scientific understanding of ourselves and the world we inhabit.

WHAT'S COVERED?

- 7 topics of Biology
- 10 topics of Chemistry
- 7 topics of Physics

There is an emphasis on scientific literacy, knowledge and understanding



STUDENT COMMENT

"Combined Science has given me a great insight into the variety of things which are covered by science. I enjoy doing experiments in all 3 science subjects."

ASSESSMENT

Combined Science is a Double Award GCSE, meaning it counts as two GCSEs. Grades are awarded from 9–9 to 1–1. You will sit a total of 6 exams, 2 examinations for **each** subject (Biology, Chemistry and Physics). Each examination is 1 hour and 15 minutes long.



NEXT STEPS

This course works to prepare students for progression to further learning in the sciences in A-level subjects such as Biology, Chemistry, and Physics or vocational courses.

For more information, contact Mrs F Sailsbury.

ASPIRATION - ENDEAVOUR - INTEGRITY - RESPECT

SCIENCE: TRIPLE AWARD (SEPARATE SCIENCES) 3 GCSES - AQA



COURSE OVERVIEW

Triple Science is three separate GCSEs, with each subject (Biology, Chemistry, Physics) graded 9–1. This specification provides distinctive and relevant experiences for more able students who wish to specialise in the separate sciences. The course is for those who want to study Biology, Chemistry, and Physics separately and tackle more challenging content. It is a rigorous and demanding course that requires dedication, strong commitment, and a real enthusiasm for science.

WHAT'S COVERED?

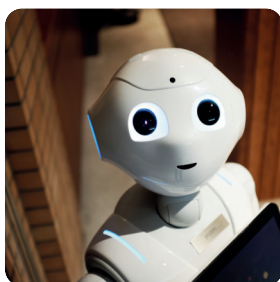
- 7 topics of Biology
- 10 topics of Chemistry
- 8 topics of Physics



These modules provide an opportunity for developing further understanding of scientific explanations, understanding of how science works and the study of elements of applied science with particular relevance to professional scientists.

STAFF COMMENT

"Studying the sciences separately allows students to gain detailed knowledge on a range of scientific topics such as cell biology, chemical analysis and radioactivity. Students will learn scientific theories as well as practical application of science. A lot of students continue to study science at A-level."



ASSESSMENT

You will sit 2 examinations for the 3 different subjects Biology, Chemistry and Physics. Each examination is 1 hour and 45 minutes.

NEXT STEPS

This course is ideal for students wishing to study individual sciences at A-level or vocational courses. There are a wide range of careers in the science field such as in aerospace, engineering, medicine/dentistry and veterinary.

For more information, contact Mrs F Sailsbury.



SPORTS STUDIES



CAMBRIDGE NATIONAL LEVEL 1/2 - OCR



COURSE OVERVIEW

The course is 3 units taken across 2 years. One Unit is an external examination. Other units are assignments or projects with most lessons being computer based. Cambridge Nationals are recognised by employers and education institutes as they help people to research and learn how to work independently. It introduces you to sport and the leisure industry and provides you with the knowledge, understanding and skills needed to prepare you for employment or progression onto further sports courses (Level 3 BTEC or A-level).

STAFF COMMENT

"This course is ideal for students who enjoy completing coursework and assignments but still are passionate about taking part in sport."



WHAT'S COVERED?

- R184 – Contemporary Issues in Sport
- R185 – Performance and leadership in sports activities
- R187 – Increasing awareness of Outdoor and Adventurous Activities

ASSESSMENT

Each unit will be graded as a Pass, Merit, Distinction or Distinction*. Most units are assessed internally, students will be taught the content of the subject and set tasks to complete independently. Feedback is given by the teacher.



NEXT STEPS

This course provides the foundations for more advanced qualifications such as Sport BTEC Level 3. It prepares young people for careers in health, fitness, coaching and teaching.

For more information, contact Mr Fenwick.

ASPIRATION - ENDEAVOUR - INTEGRITY - RESPECT

NOTES

