

Lytchett Matravers Primary School and Preschool

Wareham Road, Lytchett Matravers, Poole, BH16 6DY

01202 622378 / e-mail: office@lmps-dorset.co.uk

Headteacher: Matt Vernon

Deputy Headteacher: Laura Dominey

Assistant Headteacher: Amy Foster



Friday 27th March 2026

Dear Parents / Carers,

The staff team at LMPS have an unwavering commitment to supporting our children to develop. They work tirelessly towards this aim, often during times that are 'out of hours' and at the expense of their own interests and personal lives.

Although we know that our teachers' efforts do lead to positive development for the children, we feel that we should manage some expectations in relation to email communication in order to provide some protection to the team, which will not be at the expense of the work that we do or the care that we provide. For this reason, teachers will now not respond to emails after 5:30pm or before 8am.

Encouraging teachers to avoid answering emails outside working hours offers significant benefits for both educators and the wider school community. Teaching is a demanding profession that requires focus, emotional energy and sustained attention throughout the day. By protecting time away from work, teachers can properly rest and recharge, reducing stress and helping prevent burnout. This personal downtime enables them to return to the classroom the next day with greater patience, creativity and mental clarity, which directly supports pupil learning and wellbeing.

Maintaining firm boundaries around communication also promotes a healthier school culture. When teachers are not expected to be constantly available, it sets a positive example for colleagues, students and families. It communicates respect for personal time and encourages others to follow similar habits, reducing pressure on staff across the school.

We hope that everyone has a restful and relaxing Easter break and look forward to welcoming all of the children back to school on Monday 13th April.

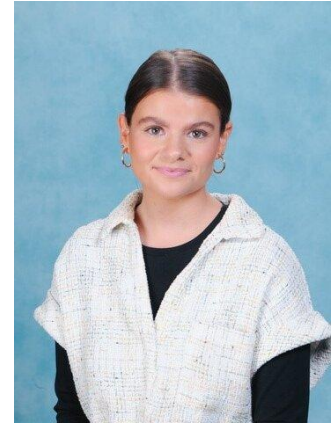
With warmest wishes as always,

Mr Vernon
Headteacher



Teaching And Learning Lead

Miss Longworth will become the Teaching Learning Lead for the school after the summer half term break, following an internal selection process last week. She will support our teachers to continue to refine and improve their practice, in line with the school's teaching and learning handbook. Congratulations!



'Little Troopers'

Following Mrs Murphy moving into the preschool, Mrs Wells and Mrs Kerley will take over the 'Little Troopers' club for children where a parent is a member of the armed forces. If you feel that your child qualifies to attend this club – access is also open to anyone with a family member who is an active member – please let us know through the school office.

Safeguarding Over The Holidays



If you have any concerns about the welfare of any child this holidays, there are different avenues of communication that you can contact to report these directly.

BCP residents: [Children's First Response Hub for child abuse or neglect concerns | BCP](#)

Dorset residents: [Worried about a child - Dorset Council](#)

The NSPCC also has a helpline to discuss any concerns that you might have and to support the sharing of concerns / disclosures: [Report child abuse | NSPCC](#)

You can also contact a DSL during the Easter period through emailing:

head@lmpsdorset.co.uk and deputy@lmpsdorset.co.uk

Please use both of these email addresses as different staff will be monitoring the inbox on different days of the holidays.

We all have a duty of care to the children in our community to call out any concerns that we have.

Phone Lines

From the start of the summer term, phone calls to **both** the school and preschool will need to use the same number: (01202) 622378. When calling this number, you will be provided with options in order to direct your phone call to the appropriate section of the school.

A separate number will be used to contact wrap around care (Early Birds and After School Club): (07769) 264332.

Feedback well-being dog

Thank you to the large number of families who responded to the questionnaire about the potential for the school to have a well-being dog. Feedback was universally positive, with a few caveats, with 100% of respondents stating that they felt this would be something that would be of benefit to the children.



Comments suggested that a well-being dog would support children with SEND or anxiety and would support pupils' engagement in school. It was felt that the presence would support a calm environment and general well being. We will now continue to research this initiative and will feedback on developments in due course.

Parenting Together In A Digital World

On Tuesday 14th April, Dorset Council are organising an online event to support parents / carers to help their children navigate the online world safely. A flyer is attached to this newsletter with further information and a QR code to scan in order to book a place!

Free Session For Parents And Carers About Autism

The Educational Psychology and Specialist Teacher teams are offering a free information session for parents and carers about autism. This is an in-person session offered in each locality. It is open to everyone in the community: please see attached flyer for further information.

SEND Support Group

Wareham Family Hub are offering a free support group for parents with children with SEND:

Supporting Children To be Safe Online

The government has published a website full of hints and tips about how to support your child to be safe online: [Help your child stay safe online - Kids Online Safety](#)

Don't forget that Hamwic Education Trust's platform also supports in this area. There is so much to support positive engagement with technology: [Online Safety Hub - Hamwic Education Trust](#)

Holiday Activity Fund Places

Holiday Activity Fund places are available for a variety of clubs during the Easter holidays, please follow the link below for further information and to get a code if your child accesses means-tested free school meals that will provide access to free spaces: [Easter in Dorset - Holidays, Activities and Food](#)

We are excited to welcome back Stars Holiday Club to LMPS this Easter, as well as Total Sports, and this relationship is due to continue during future holiday periods in order to support access to provision during the holidays in the village.



SEN Parent SUPPORT Group

py:cf
the young are first
Partnership of Youth & Community Provision

Face to face support group for families with children who have neurodiverse needs – diagnosed or undiagnosed

where?

Fri 30th Jan – Wareham Family Hub 11.30am–1pm
Fri 27th Feb – Wool CofE Primary School Community Room 9.45am 11.15am (Parents from other schools are welcome)

Fri 27th March – Wareham Family Hub 11.30am–1pm
Wed 22nd April – Poppies Tea Room Bovington 10am–11.15am
Friday 24th April – Wareham Family Hub 11.30–1pm

There's no need to book, just turn up and meet others!
For more info call 01929 552 934 or email office@pycf.org.uk

Wareham Family Hub PYCF is located behind Purbeck School on Worgret Road, Wareham, BH20 4PH



Easter in Dorset
Welcome to the
Holiday Activities and Food Listings for Dorset

[Share on Facebook](#) [Share on Bluesky](#)

The Holiday Activity and Food Programme (HAF)

Vivian Dance School Performance

Vivian Theatre School is holding their 25th Anniversary Showcase, 'Starlight', on Sunday 26th April with shows at 1pm and 4:30pm. Do come and support the large number of our children performing!

Tickets are available from Ailsa Vivian, 07766 706981.



Attendance

We know a huge number of our children have really positive rates of attendance. The table below presents the number in each class with attendance at or above 95% currently and how this reflects as a percentage of the class. Well done to Merlin class again for such an impressive total!

Class	Number of children with attendance at or above 95%	% of children with attendance at or above 95%
Honeybee	23	77%
Ladybird	26	87%
Butterfly	16	76%
Dragonfly	15	63%
Nightingale	20	67%
Skylark	23	77%
Kingfisher	25	81%
Woodpecker	23	77%
Puffin	23	72%
Swan	28	85%
Buzzard	22	69%
Osprey	23	72%
Kestrel	24	80%
Merlin	31	97%
Total	322	78%



Attend Today, Achieve Tomorrow