

MADELEY SCHOOL

PRINCIPAL'S POST: PARENT EDITION



Year 9 Forensics Day

On Monday, some of our Year 9 students went to

visit the City of

Stoke-on-Trent Sixth Form College for a Forensic Day.



The students enjoyed a half-day packed with fascinating activities, including fingerprinting analysis workshops and demonstrations. They got a hands-on experience, uncovering the science behind solving crimes and analysing evidence real taste of what a career in forensics might look like!

D & T Model Aeroplane



Congratulations to Sam in Year 10, for passing his model aeroplane BMFA Pilot's License. Sam will now be qualified to fly RC models up to 25 kg, once he has subscribed to the BMFA.

Sam has also recently built a radio-controlled model delta wing aeroplane which was successfully test flown, on the school field, to an altitude of 200 feet. Sam is also in the process of building a RC hovercraft to race in the School Sports Hall.



Year 9 D & T Project

In technology, all Year 9 have now come to the end of the V&A Innovate project. They have worked in teams to create ideas to solve real life problems. All should be very proud of the concepts, ideas and prototypes, that they have created in such a short time.

13 groups have been selected by the technology team to be entered into the national competition. We have everything crossed for them. Good luck!

Floating Water House

By Alistair Taylor, Edward Tomlinson and Thomas Currie

This slide and Tinkercad drawing created by Alistair

This is one of the first drawings that we got of a good floating water house. The house and deck where the residents will live is connected to floating objects such as canisters. These will keep the house above water. On the left there is a big pole representing the big metal poles that will be connecting the floating house to land. There will be multiple of them connected to the house with chains wrapped in material that will keep them from rusting. This means that the house will not float away. Then there will be a machine that ejects a ladder plank walk (that will hopefully have handles so you don't fall off. Residents will also be able to tie a small boat or jet ski to the floating house so you can use this when the ladder walk is unavailable.

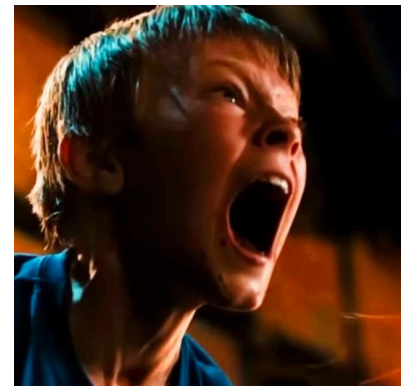
This is a Tinkercad model that I created. It shows the floating house that is depicted above. It shows two ropes/chains connected to the house's platform and the metal poles on land. This would have been printed but it would take 20 hours to print so we were unable to do it.

The theory of this design is that when the water levels rise, the chains tied around the metal poles will rise up the poles so the house can stay safely on top of the water.

Here is an example of a real life house on the water. The houses are in rows and are attached to land. There is no contraption to help it combat rising water levels although they are well attached to land and the base looks very strong.

Drama

We received some exciting news this week! Dan in Year 11 has been nominated for a best newcomer award for his leading role in the 2024 film 'Speak No Evil', featuring James McAvoy. Dan will be attending the prestigious film award ceremony voted for by film critics. We wish Dan all the best for this and we are all keeping everything crossed for him! Well done, Dan. We are all so very proud of you. We are sure this will be the first of many.



Spanish Speaking Mocks



A huge well done to the 53, Year 11 students taking Spanish GCSE, who have each done a full mock speaking exam this

Week with Mrs O'Leary and Miss Evans. Very many students exceeded their target goals, so we are excited about their outcomes in the real exam. Estupendo! Muchas gracias to parents and school staff who have supported this.

Year 11 Mock Exams

Year 11 Mock Exams commence Monday 3rd February. Please can students ensure that they have the correct equipment including a pen. A pencil, ruler, protractor and a calculator. Calculator will be required for Maths and all Science Subjects. Good luck to all students!

Parent/Carer Survey Feedback

Thank you for the responses received for the Parent/Carer Survey for Autumn Term 2024. Please see the next page for the results and actions.

Important dates:

- Wednesday 29th January - Year 11 English Trip - Poetry Live
 - Thursday 13th February - Year 9 Parents/Carers Option & Careers Afternoon Face to Face (2.00pm - 6.00pm)
- The school will close at 1.15pm on the above date and school transport will collect to reflect the earlier close.**





Results and actions from Autumn Term Parental Survey 2024

At Madeley School, we are committed to ensuring that every child thrives in a safe, supportive, and engaging learning environment. Your feedback plays a crucial role in helping us celebrate our successes and identify areas for growth.

We sincerely appreciate the time that **101** of our parents took to participate in the Autumn Term Parental Survey. Your insights help shape the way we communicate, support, and educate our students. We are pleased to share that the survey results highlight several key strengths, including student happiness and safety, academic progress, and the quality of care provided by our staff. We are especially proud that **94% of parents would recommend our school to others**, a testament to our strong community and dedicated staff.

While we celebrate these positive results, we also acknowledge the areas where we can improve. Based on your feedback, we will be taking clear and proactive steps to enhance communication, address concerns more effectively, and strengthen our approach to issues such as bullying response and awareness.

Below, you will find a summary of the survey results along with the actions we are taking to ensure continued improvement. Thank you for your ongoing support and partnership in making Madeley School the best possible environment for all our students.

Key Strengths

1. Student Happiness and Safety

- **96%** of parents agreed or strongly agreed that their child is happy at the school.
- **96%** of parents agreed or strongly agreed that their child feels safe at the school.

2. Progress and Care

- **85%** of parents agreed or strongly agreed that their child is making good progress.
- **93%** of parents agreed or strongly agreed that their child is well looked after at the school.

3. Teaching Quality

- **79%** of parents agreed or strongly agreed that their child is taught well at the school.
- **80%** agreed or strongly agreed that the school is well led and managed.

4. Behaviour and Expectations

- **85%** of parents agreed or strongly agreed that pupils are well-behaved.
- **82%** of parents agreed or strongly agreed that the school has high expectations for their child.

5. Subjects and Personal Development

- **91%** of parents agreed or strongly agreed that there is a good range of subjects available.
- **68%** of parents agreed or strongly agreed that the school supports their child's wider personal development.

6. Recommendation

- **94%** of parents would recommend the school to another parent.

Areas for Improvement and Next Steps

1. Communication and Awareness

You said: Only **40%** of parents agreed or strongly agreed that they are made aware of what their child will learn during the year.

We will: In addition to the curriculum maps and learning journeys already available on our website, we will publish regular reminders in the Principal's Post and include details of what has been taught in the newly designed KS3 pupil reports.

Bullying Response

You said: **12%** of parents felt that bullying could have been dealt with more effectively.

We will: Strengthen anti-bullying policies, reinforce with our students during assemblies and form time, ensure increased transparency in incident management, and regularly communicate efforts to parents.

2. Responsiveness to Concerns

You Said: **65%** of parents agreed or strongly agreed that the school responds well to concerns, while **14%** disagreed.

We will: improve response times for queries and ensure that response times align with our published communications policy to build trust and satisfaction. ([Madeley Communication Policy](#))

Conclusion

Madeley School demonstrates strong performance in key areas such as student happiness, safety, and academic provisions. Focused improvements in communication, aspects of our bullying response, and parental engagement can further enhance satisfaction and foster a stronger community partnership.