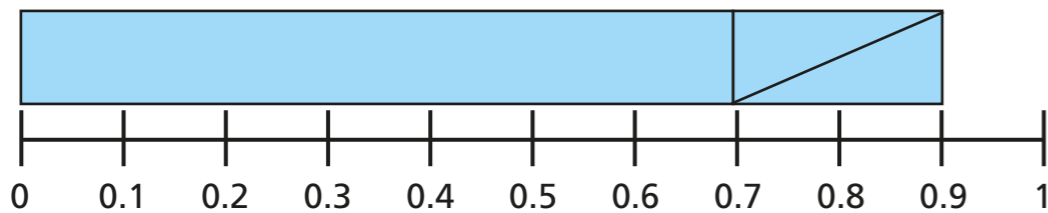


Subtracting decimals within 1

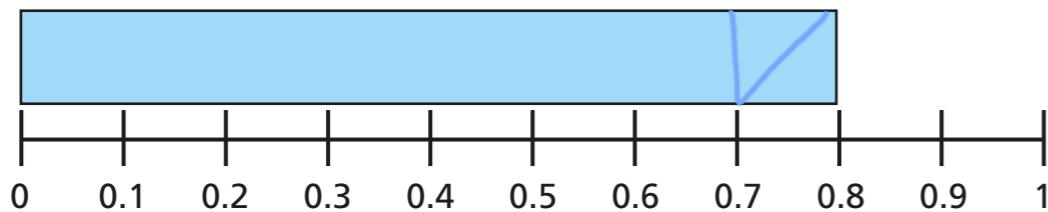


1 Work out the subtractions.
Use the number lines to help you.

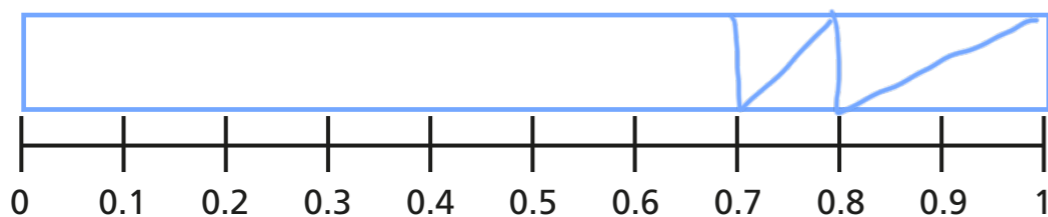
a) $0.9 - 0.2 = 0.7$



b) $0.8 - 0.1 = 0.7$

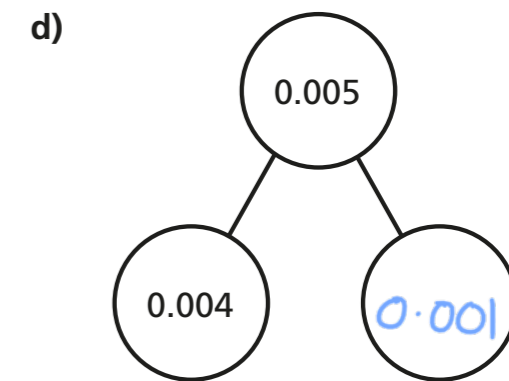
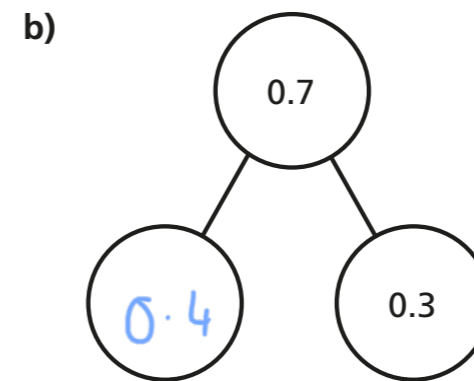
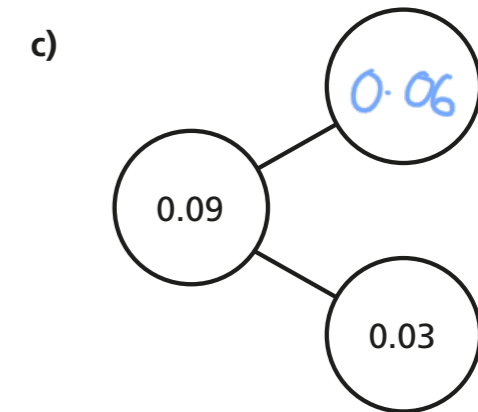
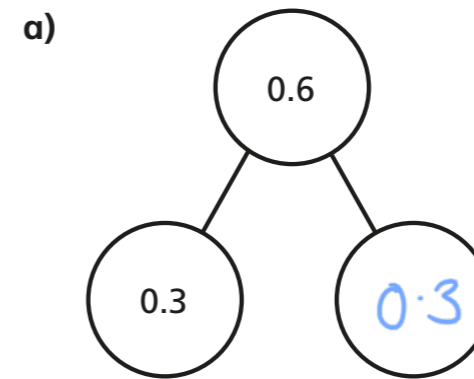


c) $1 - 0.2 - 0.1 = 0.7$



What do you notice about your answers?

2 Complete the part-whole models.



3 Complete the subtractions.

Use the place value charts to help you. The first one has been started for you.

a) $0.42 - 0.3 = 0.12$

Ones	Tenths	Hundredths

b) $0.28 - 0.05 = 0.23$

Ones	Tenths	Hundredths



4 Use the column method to work out the subtractions.

a)

		0	•	8	9
	-	0	•	4	
		0	•	4	9

c)

		0	•	7	'7
	-	0	•	6	8
		0	•	0	9

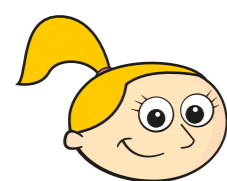
b)

		0	•	7	7
	-	0	•	6	4
		0	•	1	3

d)

		0	•	7	'0
	-	0	•	2	5
		0	•	4	5

5



I can't work out $0.56 - 0.099$ because 99 is bigger than 56

Do you agree with Eva? NO

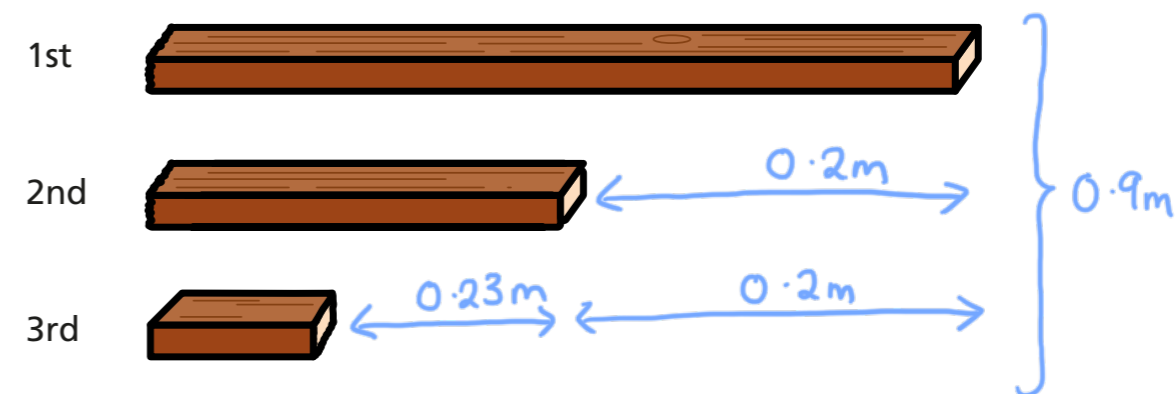
Work out the answer to $0.56 - 0.099$

0.461

6 Find the difference between 53 hundredths and 8 tenths. Give your answer as a decimal.

The difference between 53 hundredths and 8 tenths is 0.27

7 A piece of wood is 0.9 metres long. It is cut into 3 unequal pieces. The first piece is 0.2 metres longer than the second piece. The third piece is 23 hundredths of a metre shorter than the second piece.



How long is each piece of wood?

1st = $0.51m$ 2nd = $0.31m$ 3rd = $0.08m$

