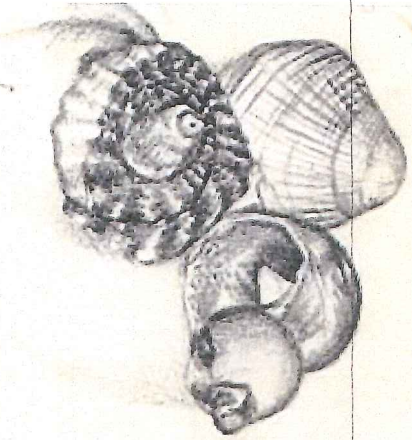
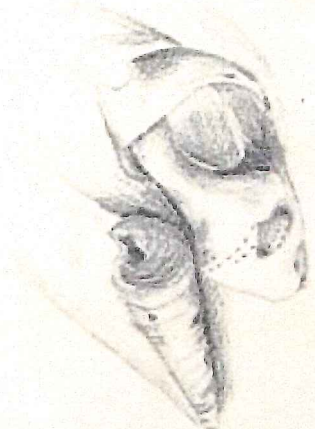


NEW ZEALAND SHELL STUDIES

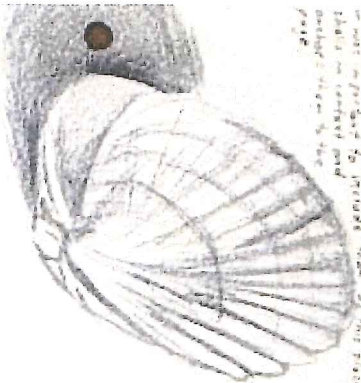


Observational drawings of shells.

I aimed to make the drawings as accurate as possible, though these observations of shape and proportion, I find to be somewhat and sometimes in my use of line and tone. - I show groups of shells to show the way I was dealing with the space between them, and how they overlapped as well.

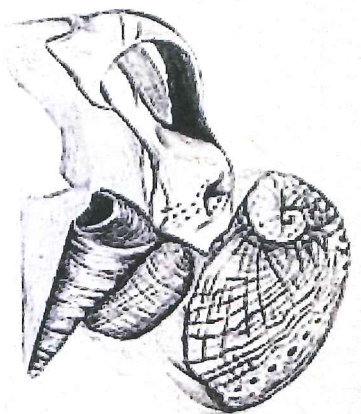
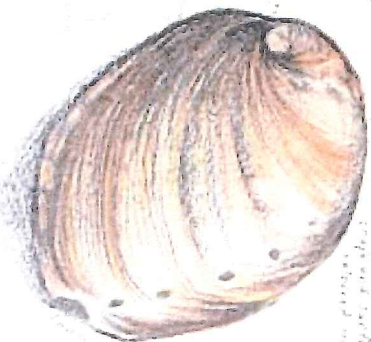


Students just either said to record, or they would say to me from many instances, however, I thought it was a pity to restrict the use of the pencil to that in contour and shading alone, the rest of the page.



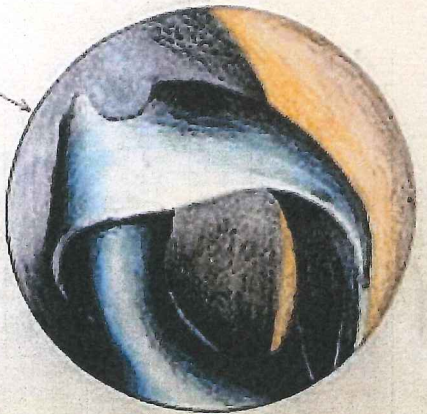
Great variety

of various shells, some having very little to do with others of the same genus. Some are not the same colour as the rest, but they are not important as they are more common. In drawing, an accurate description of shape and colour is necessary.

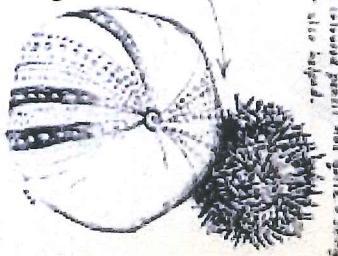


Some of the variety of these shells, some are much like the others.

I quite like the variety of the shells that look so much like the ones I have recorded. It is interesting to find out how they are the same as the others.



enlarged shell. - I was particularly interested to know the living form of the shell overlapped and covered within another. I tried to record the living smooth surface of the shell through contact with the up of tone, from dark through to light. The colour of the shell was quite a strong pink as that also helped.



Some of the variety of these shells, some are much like the others.



Some of the variety of these shells, some are much like the others.



Some of the variety of these shells, some are much like the others.



Some of the variety of these shells, some are much like the others.