

# Year 11 Tasks: In the Kitchen Spring 1

The following slides show you the expectations for Spring 1 term.

You can work in a sketchbook or on cartridge paper to complete the following pages.

Please email your work to Miss Astles for feedback and if you have any questions:

[Astlesk@Mayfield.Portsmouth.sch.uk](mailto:Astlesk@Mayfield.Portsmouth.sch.uk)

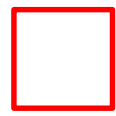






# Title page

Include images that link to or interpret your theme along with your title.  
(You can also put your name and Component 1 either on the inside of your sketchbook or this page.)



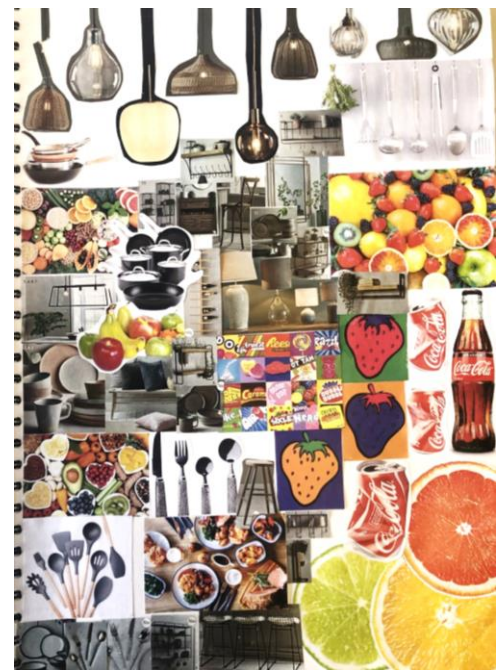
Completed Autumn 1

# Mind map

Include words, images, ideas and any personal connections.

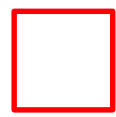


Completed Autumn 1



# Mood boards

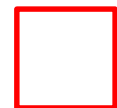
The purpose of the mood board is to set the scene for your project. The page should be completed filled with different ephemera. This can be a double or single page.



Completed Autumn 1

# Observational Drawing Double page

Complete observational drawing of anything that inspires you with this topic. Try drawing in different media and sizes.



Completed Autumn 1



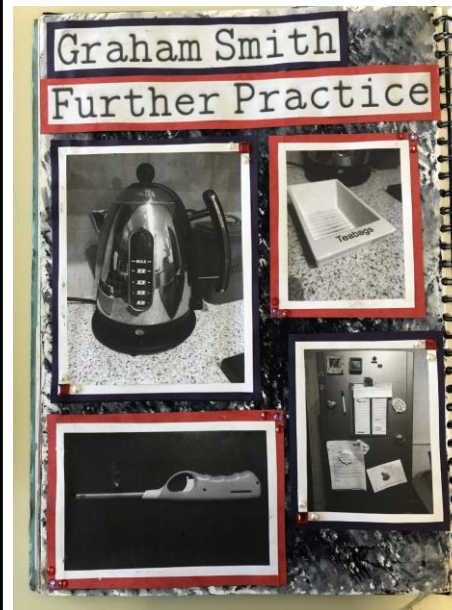
## Graham Smith Artist page

For your artist research page, you will need to complete the following on at least two A3 pages in the style of the artist's work:

- Title – Graham Smith.
- Artist study from at least one of the artist images in a media that matches the artist's style.
- Writing information about the artist – what does he do? How does he do it? What is the work about? How does it link to your theme? How can you recreate and develop this artists style in your own work?
- Stick in/ attach images of the artists work into your book.



**Tip** = Make the style/ background of your page link to your artist's style. Graham Smith works in black and white, biro/ fine liner try to make your pages reflect this.



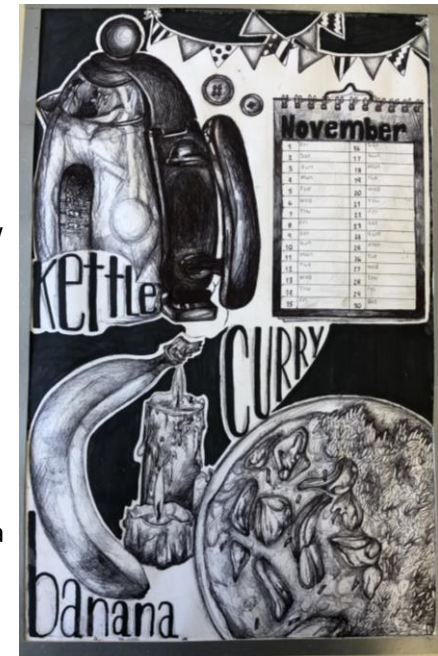
## Double page Drawing Graham Smith Response

- Draw from your photography and food/ utensils and objects that are in front of you in the style of Graham Smith. Complete at least one A3 page of drawings, this could be lots of small studies or one large outcome. Try to draw in the style of the artist. Looking at his work he produces outline drawings with no shading as he uses pens to create his artwork. You can draw the outcomes in pencil first and then go over it in pen when you are happy with the design. Test different pens/ media in your studies.

Completed  
Autumn 2

## Photography Resonse Completed Autumn 2

- Take your own photographs of images that link to Graham Smith's work (minimum of 20). This could be photographing food you eat, kitchen appliances or utensils. Think about your composition as you take a photograph, try to link this to the artists work as much as possible. Remember to change the objects and move them around to get a wide variety of photographs. Finally convert photographs to black and white.



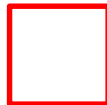


## Create a final piece inspired by Graham Smith



- Remember to choose objects that link to the theme.
- Your final piece will need to be at least A3 size. This could be lots of small studies or one large outcome. Try to draw in the style of the artist.
- Choose objects that have some sentimental meaning to you. Are these objects part of your routine? Do these objects hold special fond memories? Are they your favourite foods? What time of day do you think of when you see these objects? Think about the narrative behind these drawings.
- Draw your outline in pencil first, then when you are happy with your composition go over in your chosen pen.

Completed  
Autumn 2



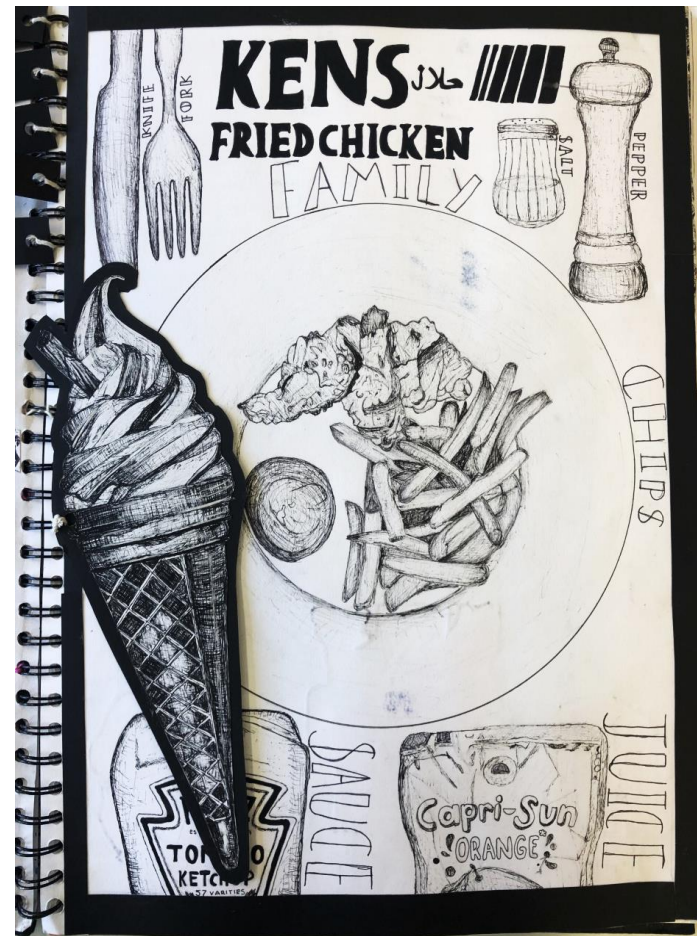
## Evaluate your final piece

Completed  
Autumn 2

Looking at your completed final piece inspired by Graham Smith evaluate your work (see annotation guides to help you).

Answering the following questions:

- How does this piece link to your theme 'In the Kitchen'?
- How does this theme link to Graham Smith?
- How have you made any personal connections?
- What do you think was successful and why?
- What skills did you learn/ did anything go wrong/ what would you improve and why?

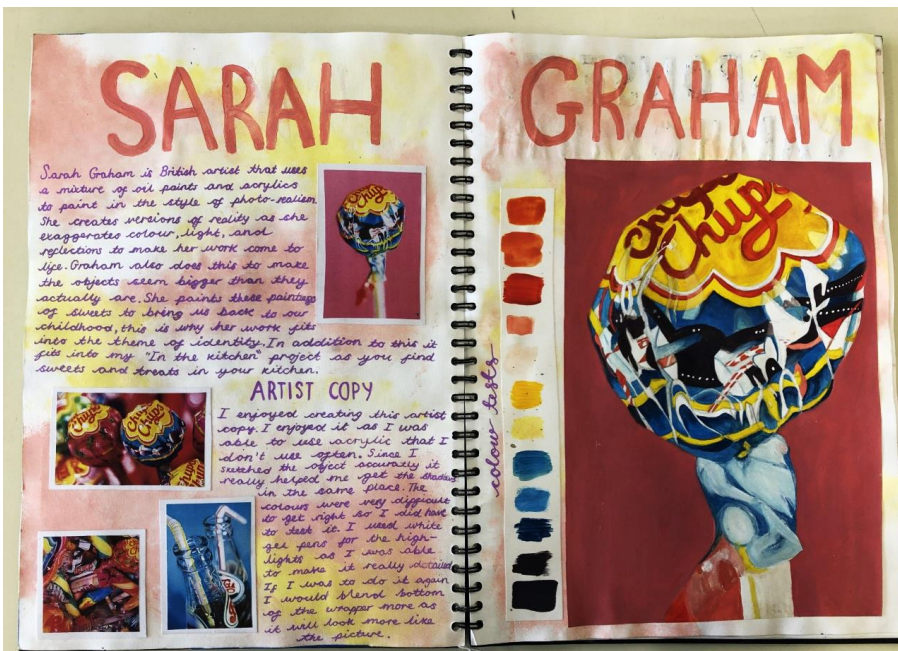




## Sarah Graham Artist page

For your artist research page, you will need to complete the following on at least two A3 pages in the style of the artist's work:

- Title – Sarah Graham.
- Artist study from at least one of the artist images in a media that matches the artist's style.
- Writing information about the artist – What does she do? How does she do it? What is the work about? How does it link to your theme? How can you recreate and develop this artist's style in your own work?
- Stick in/ attach images of the artists work into your book.



**Tip** = Make the style/ background of your page link to your artist's style. Sarah Graham's works in colour try to make your title/ page reflect her style.

Completed  
Autumn 2

## Photography Resonse

- Take your own photographs of images that link to Sarah Graham's work (minimum of 20). Sarah Graham draws food/ sweets that bring nostalgic happy memories to her from her childhood. What food bring happy memories to you?

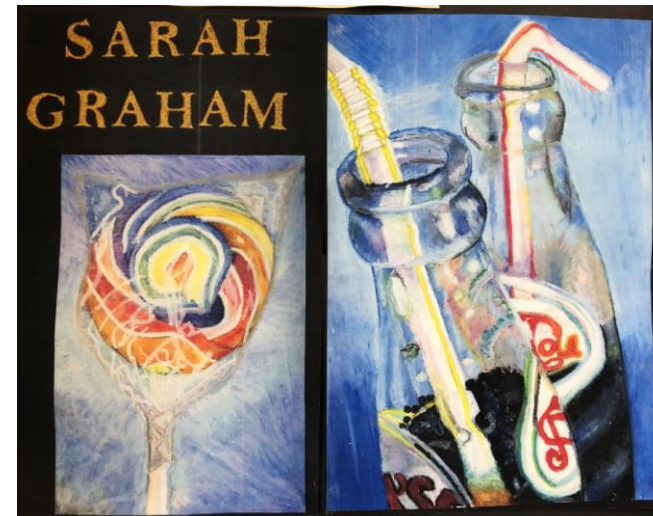


- When you take your pictures make sure they are close up, like the artists' compositions.
- Photograph using natural lighting.



## Double page Drawing Sarah Graham Response

- Draw from your photography in the style of Sarah Graham (Photorealism).
- Complete at least one A3 page of drawings, this could be lots of small studies or one large outcome.



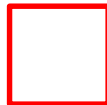
- Test different media: Coloured pencils, watercolour paints, acrylic paints, oil pastels.
- Annotate which are the most successful and why.
- Try to demonstrate blending and graduated shading as much as you can.
- Try to capture texture, direction of light and detail for higher marks.



## Create a final piece inspired by Sarah Graham



- Remember to choose objects that link to the theme.
- Your final piece will need to be at least A3 size. This could be lots of small studies or one large outcome. Try to draw in the style of the artist.
- Choose objects that have some sentimental meaning to you. Are these objects part of your routine? Do these objects hold special fond memories? Are they your favourite foods? What time of day do you think of when you see these objects? Think about the narrative behind these drawings.
- Draw your outline in pencil first, then when you are happy with your composition go over in your chosen media.
- Make sure you have completed a test in your chosen media before starting your final piece.



## Evaluate your final piece

Looking at your completed final piece inspired by Sarah Graham evaluate your work (see annotation guides to help you).

Answering the following questions:

- How does this piece link to your theme 'In the Kitchen'?
- How does this theme link to Sarah Graham?
- How have you made any personal connections?
- What do you think was successful and why?
- What skills did you learn/ did anything go wrong/ what would you improve and why?

