

Year 1 Geography: My Local Area Key Knowledge, Skills and Activities

Let's learn about: Aerial Views

Intro:

Have you ever been in an aeroplane and looked down? What do you think the world looks like to a bird?

- The word aerial means from above
- When we look at something from above we call this an 'aerial view'

Sometimes objects look different from an aerial view.

Show images of objects from an aerial perspective and discuss how they may be hard to recognise, as the view is different to how we usually see things.



We can use aerial views to see and understand the world around us in new ways.

Activity Ideas:

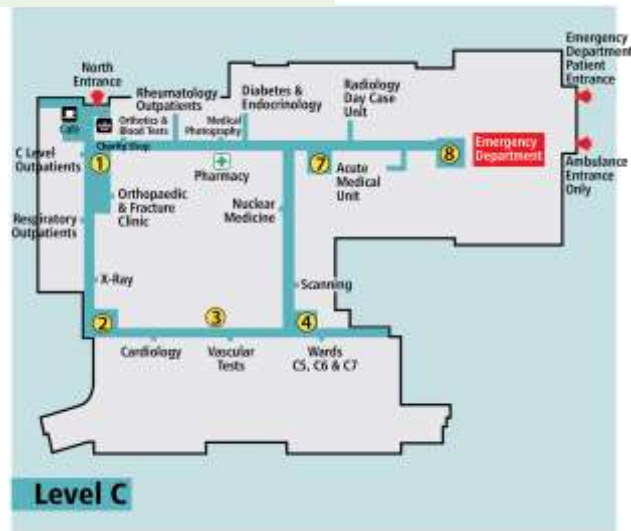
- Sketch objects around the house from an aerial perspective (as seen from above).
- Match aerial pictures of landscape features with pictures taken at eye-level (provided in the Quarantine Pack). Use the Y1 geography vocabulary to identify the features: **beach, cliff, coast, forest, hill, mountain, sea, ocean, river, valley, city, town, factory, farm, house, port, harbour.**
- Use Google Maps 'satellite' view to look at your local area from above. Can your child identify familiar buildings or landmarks?
<https://www.google.co.uk/maps/@50.8047357,-1.0967302,15030m/data=!3m1!1e3>
- Discuss why aerial views are useful and who might use them (police helicopters, search and rescue, pilots, map-makers, etc.)

Year 1 Geography: My Local Area Key Knowledge, Skills and Activities

Let's learn about: Plan Perspectives

Intro:

Look at these plans. What do you think they are of? How are they different from photographs and other types of drawings?



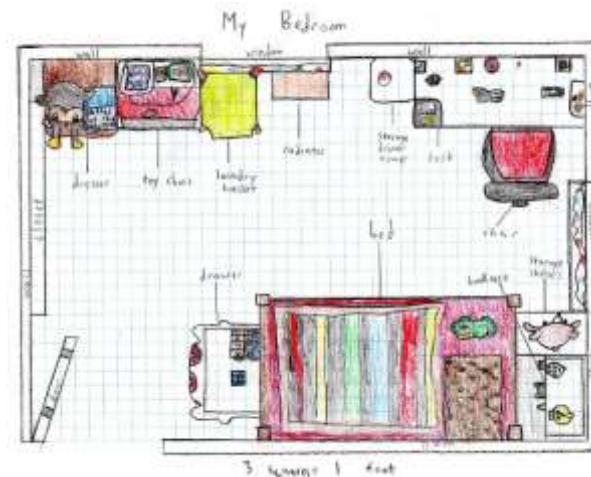
Explain that a plan is a simplified picture of an aerial view; they help us to understand where things are located.

Activity Ideas:

- Survey your home, noting where the main features in each room are (e.g. doors, windows, furniture).
- Draw or make an aerial plan of a room or floor in your home, labelling the main rooms and features. You could:
 - o Draw your plan using pencils and a ruler.
 - o Make it out of cut-out shapes of coloured paper/ card.
 - o Build it using lego bricks for the wall outlines (keeping it as flat as possible).
 - o Make it using junk modelling – e.g. cardboard for the base, plastic bottle caps for chairs, etc.
 - o Draw it on a computer or tablet using a 'paint' program.

To see some examples, visit:

<https://www.amnh.org/explore/ology/challenge/map-your-world-challenge>



Year 1 Geography: My Local Area Key Knowledge, Skills and Activities

Let's learn about: Mapping my Local Area

Intro:

Look at some simple maps. What do you think they are of? How are they different from a photograph? How are they different/ similar to a plan?



(**Tip:** zoo and country park websites are good places to find simple maps).

Maps are like plans. They are simple drawings from an aerial view that show us where things are. Plans usually are of individual rooms or buildings – but maps can be of larger areas like parks, cities, countries or even the whole world.

Maps use symbols to show where types of object are. E.g. they won't draw each tree exactly, but will use one picture of a tree to show where the trees are.

A key is a list of the symbols used in a map, with words to say what each one means. Can you spot the key in this map?

Activity Ideas:

- Look at a part of your local area on Google Maps Satellite view. It could be a park, your road, the road where your school is, the local shopping area etc. Write a list of all the buildings and features you can see.
- Discuss: which symbols could you use to map this area? Create a simple key by drawing a symbol for each item on your list.
- Draw/ make a map of part of your local area, using your key.



Year 1 Geography: My Local Area Key Knowledge, Skills and Activities

Let's learn about: What Makes My Local Area Special

Intro:

A city is a large settlement where lots of people live (settlement = a place where people live). It is bigger than a village or town.

Do you know the name of the city where we live? (Portsmouth)

There are lots of different types of buildings in a city. E.g.:

- Houses
- Flats
- Schools
- Shops
- Shopping centres
- Libraries
- Churches
- Supermarkets
- Offices
- Hospitals

Can you think of any others? Look at pictures of the different types of buildings.

A landmark is a special object, place or building that belongs to an area and makes it different. People often come to visit landmarks and look at them. They can help us to know where we are.

Do you recognise this Portsmouth landmark? Have you been near it? Do you know what it is called? (The Spinnaker Tower).



Activities:

- How many Portsmouth landmarks can you think of? Which is your favourite? (e.g. The Historic Dockyards, Clarence Pier, Spinnaker Tower, Southsea Common, Fratton Park, Mountbatten Centre, the seaside etc.). Look at pictures of these online.
- Are there any other things that make our city or local area special? What are your favourite things to do and places to go nearby?
- Pick a Portsmouth landmark and design a poster advertising it.



Year 1 Geography: My Local Area Key Knowledge, Skills and Activities

Extra Project:

Make a booklet, leaflet or poster all about your local area, using all your skills and knowledge gained so far in this topic.

You could include headings such as:

- My home
- My road
- My school
- My city
- My favourite places

You could include pictures, maps, aerial drawings and plans of local places. You can also write labels, or – as a challenge – have a go writing some sentences about your local area. These could describe landmarks or places where you like to go.

