

Year R parents' welcome session

Please come in and take a seat!



Welcome to Mayfield!

Our school ethos:

- 'Beeing' kind to everyone in our school community
- Developing the 6Rs:
 - Respectful,
 - Reflective,
 - Responsible,
 - Ready,
 - Resourceful
 - Resilient.



Welcome to Mayfield!

Normal days ... entrance via the main gate and first black gate on the left.

- 8.30 gates open
- 8.45 - gates close
- *LUNCH TIMES! - hot dinners in the canteen*
- 3.30 - home time (start of clubs)
- 4.30 - collection after clubs

Wrap around care options:

- 7.45 - breakfast club
- 4.30 - 6-pm – teatime club



Uniforms

Our branded uniform can be purchased from Skoolkit (www.skoolkit.co.uk/school-uniform/1086)

or from Penelope Ann Schoolwear (<https://www.pa-schoolwear.co.uk/>)

The uniform at Mayfield for all pupils, is as below:

Mayfield branded items:

- Mayfield branded blazer;
- Mayfield branded tie (Plain for Year R);
- Mayfield branded PE top for PE (Plain for Year R)



Other items that do not have to be branded:

- Black trousers (not leggings/jeans/jeggings/tracksuit bottoms);
- White short or long sleeved shirt;
- Black or white socks;
- Black or skin coloured tights;
- Black, polishable shoes with no visible logos or tags;
- Black shorts or jogging bottoms for PE;
- Trainers or plimsoles suitable for outdoor and indoor PE.



School shoes

- The following are **NOT** acceptable



“My only limitation is my ambition”



Preloved uniform shop

Monday, Tuesdays, Wednesday & Friday

15.35-16.25

Bradshaw-kim@mayfield.portsmouth.sch.uk



Extra-Curricular

Each child has the opportunity to sign up for extra-curricular clubs which run from 3.30pm – 4.30pm free of charge.

Several weeks before the end of each half term, the clubs available can be booked via our online system.



If a child is not booked onto an extra curricular club, we also run a chargeable 'tea time' club from 3.30pm – 4.30 and from 4.30 - 6.00pm each day.



Keeping in contact with you

- Teachers and yR staff every day
- Special events to share our learning and school
- Reports to parents
- Parents' evening
- How do you pay for anything: ScoPay



Miss School. Miss Out



#attendancematters

Attendance Expectations

All children are expected to be in school every day unless they are very unwell; You must notify the school as soon as possible when your child is unexpectedly absent e.g. sickness. You can do this by:

- calling the school directly on 02392 693432
- sending us a message via the StudyBugs app
- calling or texting the attendance mobile number on 07908 676745

You should only request leave of absence from school in exceptional circumstances. Term time holiday leave of absence requests will not be authorised.



Attendance Expectations

90% attendance means that your child is considered persistently absent.

50% attendance means that your child is considered severely absent.

You **MUST** work with us if there are barriers to your child attending school.

If we have any concerns at all, we will visit your home and contact Portsmouth City Council.

#missschoolmissout



The Year R Staff Team

- Miss Percival – Seahorse Class Teacher/Year R Lead

- Percival-Jessica@mayfield.portsmouth.sch.uk



- Mrs Moore – Jellyfish Class Teacher (Mon-Weds)

- Moore-Laura@mayfield.portsmouth.sch.uk



- Mrs Farrell – Jellyfish Class Teacher (Weds-Fri)

- Farrell-Aisha@mayfield.portsmouth.sch.uk



The Year R Staff Team



Miss Martin



Miss Uddin



Mrs Davies

Year R TAs work across the two classes to support all children.



The Year R Classes



Seahorse Class



The Year R Classes



Jellyfish Class



The Year R Classes



Canteen



Playground



Toilets

The Year R Classes

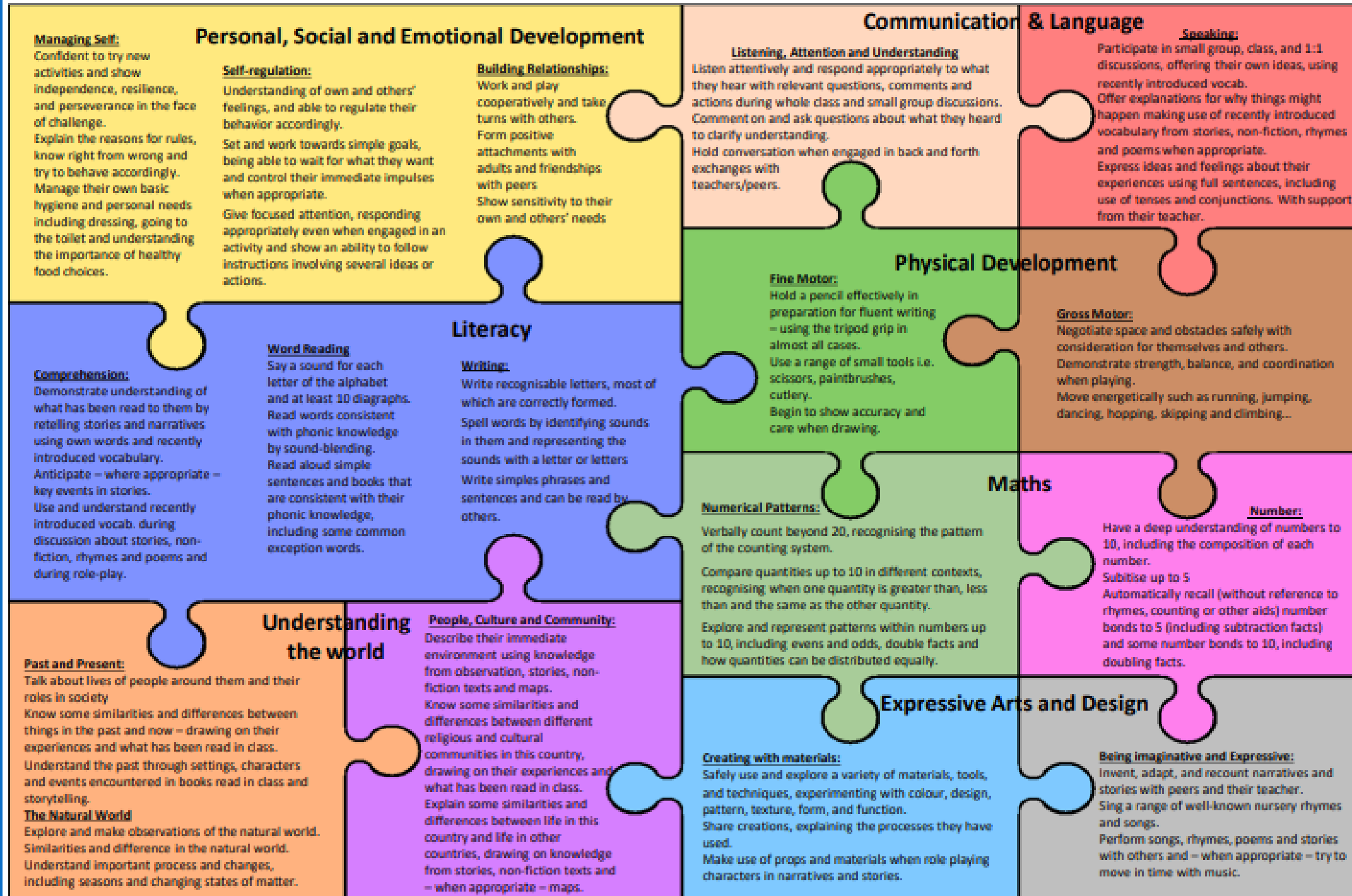
Outside Area



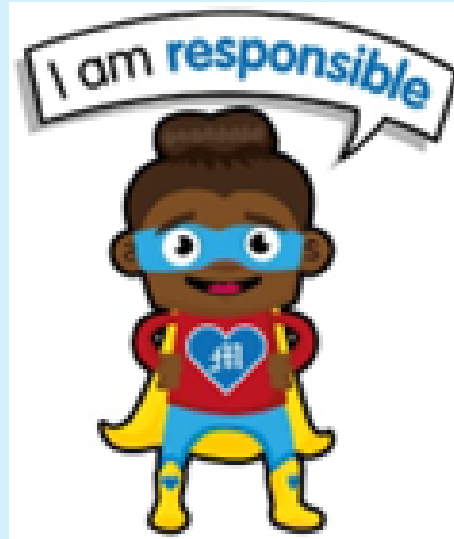
Topics

- Autumn 1 – Marvellous Mayfield
 - Autumn 2 – Adventures
 - Spring 1 – MOLIMA (My Only Limitation Is My Ambition)
 - Spring 2 – Our Wonderful World
 - Summer 1 – All Creatures Great and Small
 - Summer 2 – To Infinity and Beyond
-
- In Year R, we have topic titles that are broad. We may begin to explore our topic, but find that the children's interests lead us somewhere else. The magic of play!
 - The 17 areas of learning tend to fit anything that the children wish to learn about
 - Trips will be decided as we move through topics, with lots of notice given

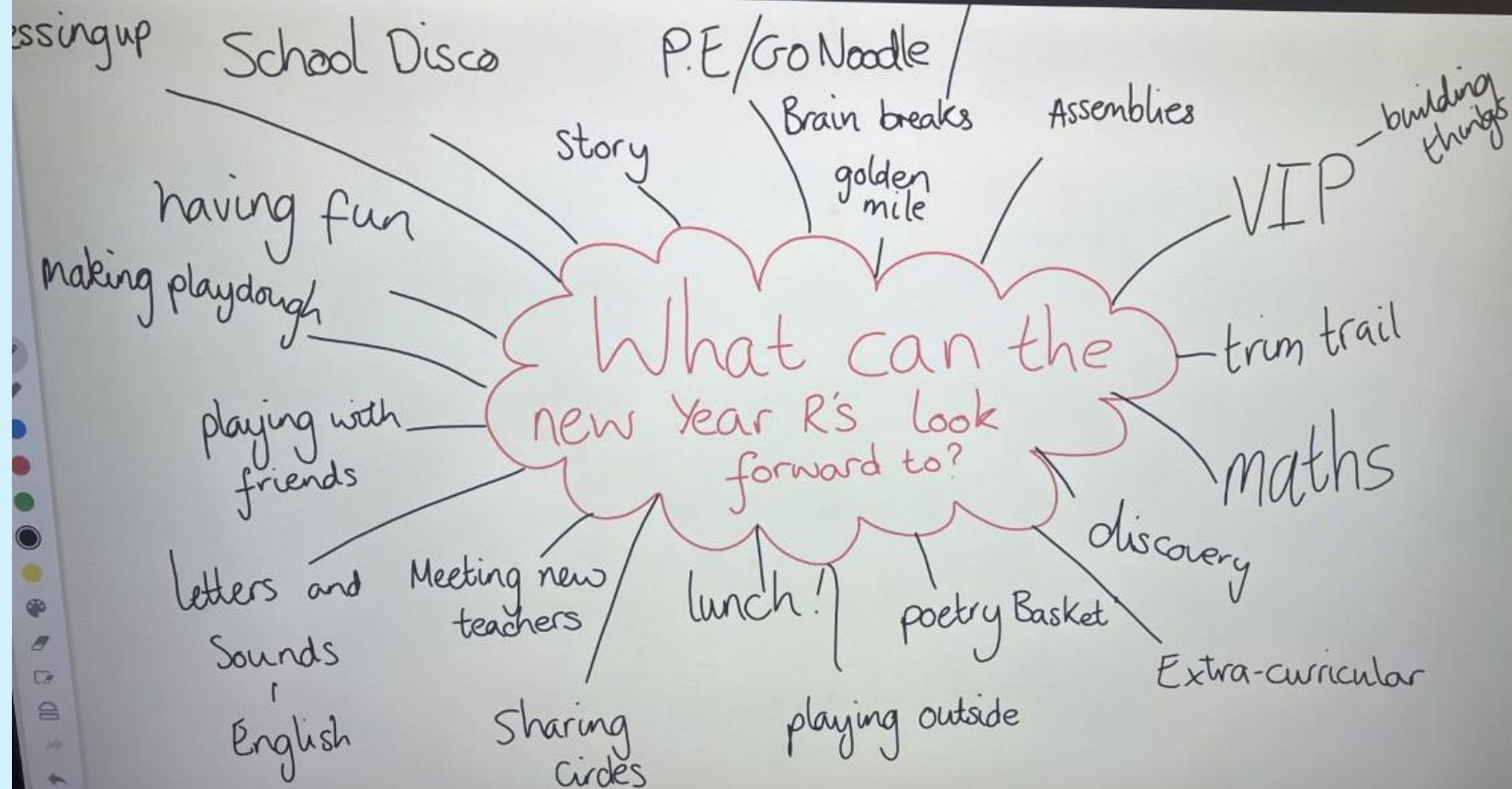




Our 6 Learning Superpowers



Learning | Super | Powers



The Year R Day

Discovery

Assembly

Communication
and Language

Phonics

PE

Lunch

Jigsaw
(PSHE)

VIP
(Very
Important
Play)

Literacy

Maths

Reading

Library

Play is SO important to your child's day as it allows them the time to consolidate and strengthen all the learning from carpet sessions.



The Year R Day

- The gates open for children to enter school at 8.30am
- Year R children can enter the school gates with their adults to walk to their classroom
- Pick up time is 3.30pm from the external classroom doors

Jellyfish Class



Seahorse Class



Reading

- We ask for each child to read 5 times a week at home. Your child will be issued with a decodable book and a library book each week.
- Your child will receive their planner when they start school, this documents their reading and will be checked by an adult weekly. In school, we will be doing group reading sessions with your child 3 times per week. Occasionally, we will read 1:1 with your child to assess their progress.
- For early reading and phonics, we follow 'Little Wandle Letters and Sounds Revised'. We begin teaching Phase 2 as soon as your children have settled. There are some great resources to support your child's progress at home on the website below.

<https://www.littlewandlelettersandsounds.org.uk/resources/for-parents/>



Homework and support at home

- Daily reading is the most important thing to support your child's progress. We ask all Year R parents to focus on this as a priority as it supports all areas of learning and is a key skill to developing their confidence across the curriculum.
- There will be a half-termly grid filled with home learning challenges that will cover all areas of learning. We challenge the children to complete at least one activity per week to support their learning journey.



Homework and support at home

- Other skills to work on at home and over the holidays:
 - Using a knife and fork
 - Getting dressed
 - Putting shoes on
 - Putting a coat on and fastenings (zips, buttons)
 - Name writing (capital letter for the first letter, lowercase letters for the rest)
 - Cutting with scissors
- Most importantly... We want your child to feel confident and happy!



Lunches, Snack and Water

When can my
child eat and
drink?

- All Year R, 1 and 2 children have the school meal in the canteen.
- You will order your child's lunches on ScoPay. Any issues with this, please email Danny Backhouse: backhoused@mayfield.portsmouth.sch.uk
- In Year R we have a 'rolling snack', which means the children can have a fruit or vegetable snack whenever they are feeling hungry. They can have 1 snack in the morning and 1 in the afternoon.
- Water bottles are in the water trolley, which children can access all day, every day. If their bottle runs out, they can fill their own bottle up at the taps.



Assessment Information

- The Reception Baseline Assessment. In the first half-term that your child joins school, we complete baseline assessments which will help schools and the DfE to measure the impact of the support given from Year R all the way to Year 6, where children take SATs. Please visit the link below to read more about this or read the letter inside your pack.
- [Information for parents: reception baseline assessment \(publishing.service.gov.uk\)](https://publishing.service.gov.uk)
- At the end of Year R, the EYFS Profile is completed by class teachers. Your child will be assessed against the 17 Early Learning Goals:
 - Emerging – working towards the expected level for the end of EYFS
 - Expected – working at the expected level for the end of EYFS



Home Visits and Start Dates

- These are our first home visits post-lockdown.
 - Please **sign up for a slot** at the end of this session for a date and time that suits you. This should be a date before your child starts school.
 - Home visit slots will be morning and afternoon on Monday 5th and Tuesday 6th September or afternoon slots on Wednesday 7th, Thursday 8th and Friday 9th September.
 - In order to schedule enough time for home visits, your child's first few days of school will be mornings only.
-
- If your child is born after the 25th of February 2018, they will be in group A.
 - Group A will begin school on Wednesday 7th September (morning only-home for lunch), Thursday 8th (morning only-home for lunch) and Friday 9th (morning only-stay for lunch). Group A will be full-time from Monday 12th.
 - If your child is born before or on the 25th February 2018, they will be in group B.
 - Group B will begin school on Monday September 12th (morning only - home for lunch), Tuesday 13th (morning only - stay for lunch). Full-time from Wednesday 14th



Please subscribe to the Mayfield Messenger on the school website.

CONTACT US	USEFUL LINKS	SOCIAL MEDIA
Mayfield School Mayfield Road Portsmouth Hants PO2 0RH Tel: 02392 693432 Fax: 02392 665298	Email/Office 365 Helpdesk Room Booking System Options Online Parental Booking	Parent Pay Scopay Student Prep Vacancies
	SUBSCRIBE TO MAYFIELD MESSENGER	
	<input type="text" value="email address"/>	<input type="button" value="Subscribe"/>

