

Thursday 18th December 2025

Dear Parents and Guardians.

School closes at the end of today for the two week Christmas break and we reopen on Tuesday 6th January. The last few weeks in school have been very exciting celebrating the festive season. The children's performances were a joy to watch and it was lovely to see so many of our families in the audience. It was obvious to see how much the children really enjoyed performing for their loved ones. Christmas lunch was equally festive, and very busy! Today the children are enjoying their Christmas parties and I have heard that they may meet a very special visitor! The children look wonderful and ready to enjoy themselves; I think that the adults in school will be ready for a lie down at the end of the day!



Thank you to our Friends of Meadowbank Group and to each of you for ensuring that our recent fund raising events were highly successful. The Santa Dance-a-thon was enjoyed by all and we will know the total raised in the New Year but the Christmas raffle raised an impressive £960. Thank you all, these funds will support our children's learning in so many ways.

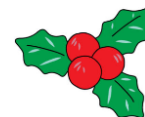
Below you will find the dates that you need for the coming half term

Dates for this half term Spring 1 (Tuesday 6th January – Friday 13th February 2026)

School reopens after the Christmas break	Tuesday 06.01.26	8.55
	(Gates open at 8.45 & close at 8.55)	
School closes for the February half term break	Friday 13.02.26	3.20
	(Gates open at 3.15 & close at 3.25)	

Class events where parents are invited to join the learning

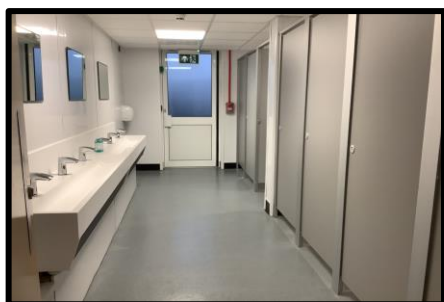
	Event	Date	Time
FS1	Early Years Foundation Stage Mathematics Workshop. Come and find out about how we teach maths, followed by an opportunity to join your child in their learning environment to see mathematics in practice.	Wednesday 28 th January 2026	FS1 & FS2Gi 9.00-10.15am
FS2			FS1 & FS2Gu 1.45-3.00pm
Yr1	Join the Year 1 Multiplication Workshop	Thursday 29 th January 2026	9.15am
Yr2	Drop Everything and Read	Friday 6 th February 2026	2.30pm
Yr3	Drop Everything and Read	Wednesday 11 th February 2026	9.00am
Yr4	Drop everything and Read	Thursday 5 th February 2026	2.30pm
Yr5	Parent and family Ukulele performance	Tuesday 10 th February 2026	10.00am
Yr6	Explore South America with us	Monday 9 th February 2026	2.30pm



Class events in school –children only

	Event	Date
FS1	Visit from Local Firefighters Big Garden Birdwatch	Wednesday 4 th February 2026 Friday 23 rd January 2026
FS2	Chinese New Year Workshop Big Garden Birdwatch	Monday 9 th February 2026 Friday 23 rd January 2026
Yr1	Visit from a local Paramedic	Week beginning 2 nd February 2026
Yr2	Fieldwork walk exploring the human and physical features of Cheadle	Wednesday 28 th January 2026
Yr3	Visit to the Lowry Theatre to watch The Lion, The Witch and The Wardrobe	Thursday 8 th January 2026
Yr4	Grosvenor Museum Roman workshop	Wednesday 14 th January 2026
Yr5	Viking Living History – visit to Tatton Park	Thursday 5 th February 2026
Yr6	Young Voices musical extravaganza.	Thursday 12 th February 2026
Meadow Rm	Sensory Stories with the Library Service	Thursday 15 th January 2026

Our building projects are progressing well. The Upper Key Stage Two toilets were reopened this week and we are very pleased with them. Gone are the old urinals and tiles! This marks the end of our toilets refurbishment programme as all of the toilets across school have been upgraded over the past few years.



Phase one of our Foundation Stage / Key Stage One building refurbishment is also on track for its end of February 2026 completion. We can now see how the classrooms will look and are very excited about the prospect of gaining a new Food Technology room.



After School Club Corridor



Class 2M



Class 2SB



Food Technology



Food Technology



After school Club Entrance



Snowy day plans

(annual winter reminder of systems)



If there is very heavy snow or frozen ice the Parent Path will be closed and all children will enter school via the front, main school office door. School adults will meet them and younger children will be escorted to their classrooms. Our older children will make their own way to their classrooms. Any changes to our usual systems will be communicated via Class Dojo to parents.

If the snow melts during the day, children will have their usual breaks outside and the Parent Path will be open at the end of the day.

If the snow does freeze children will stay inside, remaining dry, and they will leave school by the doors at the front of school, around the office area, at the end of the day.

Emergency closure or partial closure of school plans

It is extremely unlikely that Meadowbank would ever need to close and all possibilities would be considered and put in place before a decision not to open or to close part of school would be taken. A closure would only happen if it were felt that school would be unsafe to open. For example if a boiler had broken and could not be repaired in a reasonable time scale, if there was a flood in school or if there was an illness affecting a significant number of staff and we did not have enough adults to care for our children.

If we did need to close, we would communicate via Class Dojo and share whether all of school was closed or, if it was a partial closure, which classes would be effected. If a class was closed for some children, all of their siblings would be expected to be in school. We will keep parents informed via Class Dojo about when children can return.

Attendance at school is very important and we aim for every child to be in class and learning for at least 97% of the school year (185 out of 190 days). However, we do recognise that children may have illnesses that could affect their attendance for a few days, particularly in December when winter viruses are prevalent. If your child is unwell and you feel that you need to give them liquid paracetamol to reduce their temperature before school it is probable that your child is contagious and can pass their virus to others in school, so should stay at home until their temperature drops.

HOW SICK IS TOO SICK FOR SCHOOL?

Help prevent the spread of respiratory viruses.
See our tips for parents and caregivers:

KEEP ME HOME:	SEND ME TO SCHOOL:
Fever (higher than 38°C or 100°F)	No Fever (without fever-reducing medicine for 24 hours)
Sore Throat	Occasional Cough (but no other symptoms)
Persistent Cough	No Sore Throat (for 24 hours)
Runny Nose and Sneezing	No Vomiting or Diarrhea (for 48 hours)
Vomiting or Diarrhea	
Abdominal Pain (severe or long-lasting)	
Conjunctivitis (pink eye)	

A small adaption has been made to our school term dates for 2026-2027. I know that some families book holiday early so please see the dates at the bottom of this letter. They are also available on our website.

We look forward to seeing you back in school on Tuesday 6th January and to hear about all of the exciting times that you have shared together over the next few weeks.

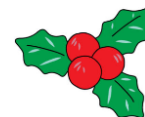
On behalf of all of the Meadowbank team, have a great Christmas break and a very happy start to 2026.

Kind regards

Mrs J. Appleton

Janine Appleton





Term Dates and Holidays

2026 - 2027

INSET 1 - Staff Development Day Tuesday 1 September 2026

Autumn Half Term 1	Wednesday 2 September 2026 - Friday 23 October 2026
Mid-term Holiday	Monday 26 October 2026 - Friday 30 November 2026

INSET 2 - Staff Development Day – Monday 2 November 2026

Autumn Half Term 2	Tuesday 3 October 2026 - Friday 18 December 2026
Christmas Holiday	Monday 21 December 2026 – Friday 1 January 2027

Spring Half Term 1	Monday 4 January 2027 - Friday 12 February 2027
Mid-term Holiday	Monday 15 February 2027 - Friday 19 February 2027
Spring Half Term 2	Monday 22 February 2027 - Thursday 25 March 2027

Good Friday - Friday 26 March 2027

Easter Monday – Monday 29 March 2027

Easter Holiday	Friday 26 March 2027 - Friday 9 April 2027
Summer Half Term 1	Monday 12 April 2027 - Friday 28 May 2027

INSET 3 - Staff Development Day - Friday 30 April 2027

Early May Day Holiday - Monday 3 May 2027

Late May Day Holiday - Monday 31 May 2027

Whit Holiday	Monday 31 May 2027 - Friday 11 June 2027
Summer Half Term 2	Monday 14 June 2027 - Friday 23 July 2027

INSET 4 - Staff Development Day Monday 26 July 2027

INSET 5 - Staff Development Day Tuesday 27 July 2027

INSET 6 - Staff Development Day Wednesday 28 July 2027