

# ROCHDALE BOROUGH COUNCIL REDUCTION IN PUPIL ADMISSION NUMBER FOR MEANWOOD COMMUNITY PRIMARY

Notice is given in accordance with the school Admissions Code that Rochdale Borough Council, Children's Services, Number One Riverside, Smith Street, Rochdale, OL16 1XU, intends to reduce the admissions intake to Meanwood Community Primary.

**1. The name and contact address of the local authority or governing body publishing the proposals:**

**Local Authority:** Rochdale Borough Council

**Address:** School Organisation and Development Team, Early Help & Schools, Rochdale Borough Council, Number One Riverside, Smith Street, Rochdale, OL16 1XU

**Date of Publication of Proposals for Consultation:** 12th December 2022

**2. The name, address and category of the school that is proposed to be altered:**

**Address:** Meanwood Community Primary, Churchill Street, Rochdale ,OL12 7DJ

**Category of school:** Community Primary School.

**3. The date in which the proposed changes will take effect in terms of both the buildings and additional place provisions:**

1<sup>st</sup> September 2024.

**4. The place to which representations can be made, and by when:**

Any person can make representations on the proposal by using the following link to the council consultation website at: <https://consultations.rochdale.gov.uk/research/school-admissions-policy-2024-25> or by sending them by 23<sup>rd</sup> January 2023 to: Fay Davies, by e-mail at [fay.davies@rochdale.gov.uk](mailto:fay.davies@rochdale.gov.uk) or in writing to this address: School Admissions, School Organisation & Development Team, Early Help and Schools, Rochdale Borough Council, Number One Riverside, Smith Street, Rochdale, OL16 1XU.

**5. What is proposed?**

The proposal is to permanently reduce Pupil Admission Number at Meanwood Community Primary, Rochdale from 60 places to 45 places with effect from 1st September 2024.

**6. School capacity and places- current pupil numbers and admissions- (distinguishing between compulsory and non-compulsory school age pupils), age range, sex, and special educational needs (distinguishing between boarding and day pupils) for whom provision is currently made:**

Meanwood is a mainstream Primary school and has 363 pupils on roll from Reception to Year 6 based on the May 2022 school census. The current age range of the children is 3-11 and does include a nursery.

ROCHDALE MAY 2022 CENSUS	Places 2021	Rec NOR	Places 2020	Year 1 NOR	Places 2019	Year 2 NOR	Places 2018	Year 3 NOR	Places 2017	Year 4 NOR	Places 2016	Year 5 NOR	Places 2015	Year 6 NOR	Total NOR
Meanwood	60	48	60	48	60	44	60	50	60	60	60	53	60	60	363

The local authority has a statutory duty to deliver sufficient places for children living in the borough.

## 7. Why do we want to make the change(s)?

### Reasons for the reduction of places

7.1 Rochdale Borough Council has a duty to provide sufficient places for children living in the borough. This includes children who move into the borough after the normal start in Reception class and in higher year groups; termed in-year applications. The council has a duty of care to manage school places effectively and schools have a duty to adequately staff their schools.

7.2 The local authority has a duty of care to children in schools to make sure too many empty places are removed in order that the school is adequately financed through its per-pupil funding allocation, and that education is not compromised because of limited finance.

7.3 Birth rates in the area peaked in 2019 at 322 births, and are due to drop to 286 for 2024 and 287 for 2026.

7.5 The Rochdale NW area normally sees high in-flow for Reception intake but after the standard start of school, numbers on roll do not change. No additional spare capacity is needed as in-year applications do not lead to growth in school cohorts.

7.6 School finances for some schools in the area have been very challenging due to too many spare places being carried in some schools. Reducing the Pupil Admission Number at this school will enable the school to better manage its staff and finances.

### Quality of Provision

7.4 The current OfSTED report for Meanwood Community Primary was published in December 2021 and the school was judged as 'Requires Improvement' for Overall Effectiveness, but 'Good' in both Pupil Behaviour and Pupil Development.

7.5 The advantages to the school and the children will be:

- More stability in number of pupils
- The school can staff the classrooms to the correct ratios

7.7 The Governing Body of Meanwood Community Primary is committed to upholding the standards and ethos of the School. Through the Leadership and Management Team and alongside the Governing Body, the school aspires to provide an 'Outstanding' education to all of the children in its community.

## 8. The need for a reduction in places - a statement and supporting evidence about the need for reducing school places in the area including whether there is sufficient capacity to accommodate additional pupils in the current schools:

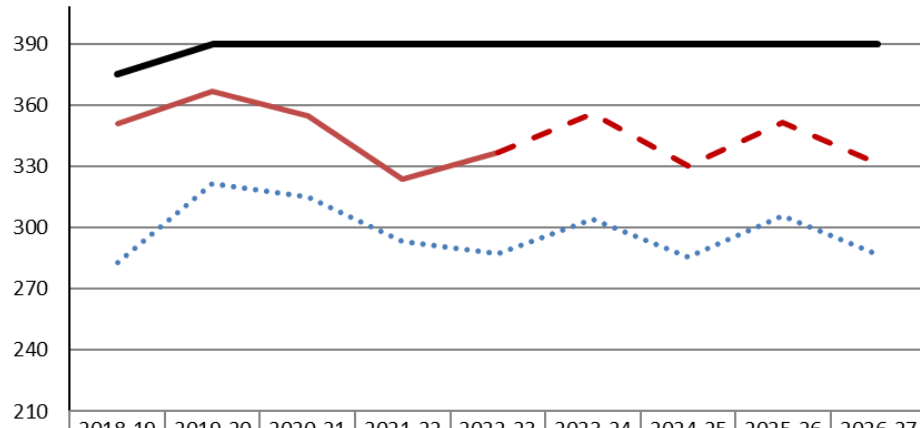
8.1 New pupil projections for Rochdale Borough, Township and planning area were published and reported to Cabinet on the 22<sup>nd</sup> November 2022. Documents were shared with schools on the local authority internal bulletin platform. The consultation information can be found in the link below:

<https://consultations.rochdale.gov.uk/research/school-admissions-policy-2024-25>

This highlighted the need for reduction in primary school places going forward within the central Rochdale planning area, key factors being:

- Reduction in local birth rates which follow national trends;
- Reduction in take up of in-year places locally;
- Assessment of new housing developments has been considered.

## Rochdale NW : Births-Places-Intake to 2026



	2018-19	2019-20	2020-21	2021-22	2022-23	2023-24	2024-25	2025-26	2026-27
..... births	283	322	315	293	288	304	286	306	287
— Reception Intake	351	367	355	324	337				
- - - Reception Intake Forecast					337	356	330	351	331
— Places Available	375	390	390	390	390	390	390	390	390

8.2 The forecast for places in Rochdale NW is shown above and suggests there will be 60 spare places in 2024 and 59 spare places in 2026.

8.3 The School Admissions Code requires a formal consultation on the reduction of Pupil Admission Number to be completed between 1<sup>st</sup> October and 31<sup>st</sup> January. The formal determination of the Pupil Admission Number is then required by February 28<sup>th</sup> in the year preceding the intake year.

8.4 Pre-Consultation have taken place with school leaders and governors and all stakeholders are asked to write in to the formal consultation in the link above.

## 9. Implementation of the Proposals

*Rochdale Borough Council as promoter has responsibility for implementing the proposals which must conform to the School Admissions Code.*