



Meanwood Primary School Newsletter

Friday 8th May 2026



New This Week:



Mon 11.05.26 to Thu 14.05.26 Year 6 SATS—All Year 6 children must be in school promptly for 8.30am

Thu 21.05.26 EYFS Nursery Song and Story Performance (11.20am EYFS Unit)

Mon 25.05.26 to Fri 29.05.26 Half Term Holiday—School Closed



A total of **33** children were **late this week!!** A big 'thank you' to those who arrive on time every day!!

The main gates open at **8.30am**. Your child needs to enter the classroom at **8.45am**.

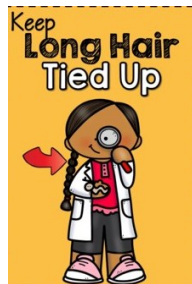
The classroom doors close at **8.51am**. If your child arrives after this time, they are **LATE**.

HEAD LICE

Please be reminded to check your child's hair regularly and thoroughly for Head Lice, and treat promptly if necessary so that any head lice can be dealt with quickly and before they are allowed to spread.

Please also ensure that your child's hair is tied up for school to help reduce the risk of contact.

Thank you.



YEAR 6 PARENTS—SATS (next week)

Please ensure that your child arrives promptly next week for 8.30am for Year 6 SATS week (Monday—Thursday)

NOTICE TO PARENTS

Please do not allow your child to ride bikes / scooters / e bikes / skateboards on the school grounds.

This is due to accident risks.

Thank you.



BEFORE SCHOOL CLUBS—SUMMER TERM

Here are the new Summer Term 'Before School' Clubs that can be booked via the Arbor App.

Your child must arrive promptly at school for 8.00am.

Monday	Rounders	Years 5/6	8 places left
Tuesday	Unihoc	Years 3/4	11 places left
Wednesday	Tennis	Years 5/6	13 places left
Thursday	Handball	Years 3/4	13 places left
Friday	Cricket	Years 5/6	9 places left

AFTER SCHOOL CLUBS—SUMMER TERM

Here are the new Summer Term 'After School' clubs that can also be booked via the Arbor App.

Monday	Karaoke	Years 5/6	6 places left
	Handball	Years 3/4	9 places left
Tuesday	Mindfulness	Years 3	12 places left
	Handball	Years 5/6	5 places left
Wednesday	Tennis	Years 5/6	10 places left
Friday	Gardening	FULL	
	Rochdale AFC	Year 5	5 places left

Important Reminders

WOULD YOU LIKE TO BE IN WITH A CHANCE TO WIN A SET OF 4 TICKETS TO GULLIVERS WORLD?

School have 2 sets of tickets available for 2 lucky winners.

Expiry dates for the tickets is 31.08.26, so perfect for the summer holidays.

Proceeds will go towards raising funds for the Year 6 leavers.

The last day to purchase them is 11.06.26 at 9am, and the live draw will take place on **12.06.26**.

Tickets are £1.00 each and are now available to be purchased on the Arbor App in the school shop section.



DESMOND'S DRAGONS

FOOTBALL FUN FOR EVERYONE
AGES 5-12

Desmond's Dragons provides the perfect introduction to football for your little ones.

Sessions are **fun, inclusive** and designed for people of **all abilities**.

Learn new skills, make new friends and get active!

ALL ABILITIES WELCOME!

LEARN NEW SKILLS, MAKE NEW FRIENDS AND GET ACTIVE!

JOIN US AT OUR TUESDAY, WEDNESDAY AND FRIDAY EVENING SESSIONS!

DESMOND'S DRAGONS	DESMOND'S DRAGONS	DESMOND'S DRAGONS
TUESDAY	WEDNESDAY	FRIDAY
5PM-6PM	5PM-6PM	5PM-6PM
Middleton PlayZone, King George V Playing Fields, Aspinall Street, Middleton, M24 2BE	Mitnrow Memorial Park, 115 Newhey Rd, Rochdale, OL16 4JF	Crown Oil Arena, Sandy Lane, Rochdale, OL11 5DR

BUILD CONFIDENCE

STAY ACTIVE

MAKE FRIENDS

HAVE FUN!

SCAN HERE FOR MORE INFO!

Rochdale Care Organisation
Rochdale Additional Needs Service Talk to Learn Team and HMR
Children's Speech and Language Therapy

Introduction to Signing Workshop

What is it?

This friendly workshop will teach you all about the benefits of signing, 100 early signs and how signs can be used in routines, play, songs and stories.

Who is it for? This is a session for parents and carers only. Please do not bring your child.

Parents and Carers of younger children who:

- need support to understand what you say
- need support to share their message
- need support with their speech, language and communication skills
- aren't using words yet or are using mainly single words or short phrases

Using signs helps children to talk, learn new words and feel more confident 😊

EVENT	DATE	TIME	LOCATION
Introduction to Signing Workshop	Thursday 9 th July	09.30 - 12.30	Woodland Family Hub Regent Street, Heywood, OL10 3BX This is on the site of Woodland Primary

IMPORTANT: Before the workshop

You must telephone **01706 926400** or email rans.admin@rochdale.gov.uk to book your place. We will need the name and date of birth of your child and your contact details.

An interpreter can be provided if required.

If you have any questions or would like any further information about the workshop please contact us on **01706 926400**.



May Coffee Session

**Tuesday 12th
May 2026
10am-12pm**

**Second Floor
Spotland Bridge Mill
Mellor Street,
Rochdale OL11 5BU
rochdalepcv@outlook.com**

Private appointments with SENDIASS please email us to book a time

Guest Speakers

- Gateway Leisure to discuss activities and sessions they offer
- My Happy Mind to discuss what their service and offer is
- SEND Advice Service to discuss their service and signposting will be available on the day

This is a safe and open Parent Carer space for discussion so please do not bring Children and Young People you care for to this session.

Important Reminders

The Umbrella Sessions

Information and support for parents and carers of children and young people with Neurodiversity
NO DIAGNOSIS NEEDED

- Has your child got a diagnosis of ADHD or Autism?
 - Are you on the way to getting a diagnosis?
 - Are you on the Neurodiversity Journey?
- ANSWERED YES TO ANY OF THESE?**
Then the Umbrella sessions are for you

The sessions will use person-centred approaches to build understanding of your child's Neurodiversity and increase resilience to support them on their journey in a positive and empowering way

Sessions are at Spotland Bridge Mill, Rochdale, OL11 5BU

Neurodiversity All about it - part 1, Information
Monday April 27th 6-8pm
Neurodiversity All about It - Part 2, strategies
Monday May 11th 6-8pm
Sensory challenges and strategies to support
Tuesday May 5th 12.30-2.30pm
Sleep and Well being
Monday June 8th 6-8pm



Please book Sessions via
Eventbrite or
For more information please contact
rochdaleumbrellasessions@outlook.com

'What Matters To Me' Person Centred Planning Session

Person-centred thinking and planning tools can help to improve understanding, communication and relationships, supporting your neurodiverse child or young person to lead a full and fulfilling life based on their own aspirations and dreams.

This session is focused on helping individuals identify what really matters to them. Person-centred planning puts your child at the heart of every decision, supporting them to set meaningful goals, build on their strengths, and shape the life they want. This session will introduce simple tools, encouraging choice, confidence, and positive future planning.

Sessions will be held at:
Spotland Bridge West Mill (2nd floor)
Bridgefold Road (off Mellor Street)
Rochdale, OL11 5BU

Monday June 8th 10-12noon
Monday June 8th 6-8pm



Sessions are booked via
Eventbrite - search for
Umbrella sessions or email
rochdaleumbrellasessions@outlook.com

Justin Axon
Training & Consultancy Ltd

Free Workshops for Parents & Carers of Children & Young People with SEND/SEMH in Rochdale

- 'Communication Through Play'
Wednesday 20th May 2026 @ 9:30am-12pm
- 'De-Escalate, Regulate & Recover'
Tuesday 16th June 2026 @ 9:30am-12pm
- 'Communication & Wellbeing for SEND/SEMH Families'
Tuesday 29th September 2026 @ 9:30am-12pm
- 'Lifeskills and Independence'
Tuesday 20th October 2026 @ 9:30am-12pm
- 'E-Safety for SEND/SEMH Families'
Tuesday 17th November 2026 @ 9:30am-12pm
- 'Friendships, Puberty & Safe Choices'
Wednesday 9th December 2026 @ 9:30am-12pm

Scan QR Code for more & to book!

Nursery End of Spring Term Performance



Please join us for our Nursery end of Spring term story and song performance...

Thursday 21st May 11.20am

Please come to the usual EYFS door.

Enjoy watching your children joining in with our Spring story and singing their fantastic Spring Song.

All Nursery parents and carers welcome

Neurodiversity Hub Workshop Timetable for Parents and Carers - April-July 2026



Tools for Emotional Regulation (primary and secondary aged children)

We will look at how the STAR tool and the Hand-Brain Model can help you understand what might be happening for your child and explore supportive ways to help them feel safe and regulated.

30th April 9:30-11:30 at Milnrow Parish Primary School, James St, Rochdale OL16 3JT
8th June 9.30-11.30 at Callaghan House, Cross Street, Heywood, OL10 1PU

Join us for a shorter, online session designed to help you better understand your child's emotional and sensory responses.

7th May 6-7pm 29th June 10-11am 16th July 12-1pm

Managing Anger and Meltdowns (primary and secondary)

We will look at understanding and managing anger, anxiety, distressed behaviours and meltdowns.

27th April 9.30 - 11.30am at Bowlee Park Primary School, Windemere Rd, M24 4LA
20th May 5pm - 7pm at Callaghan House, Cross Street, Heywood, OL10 1PU
22nd June 9.30-11.30 at Floor 2, Spotland Bridge Mill, Mellor Street, Rochdale OL11 5BU

SEND Transition coffee mornings for Year 6 parents and carers

Join the Neurodiversity Hub and RANS NOTES to discuss your child's transition to high school and discuss any challenges with the team and other parents/carers. Please book on both dates.

21st April 10-11:30 at All Souls CE Primary School, Healey Ave, Heywood OL10 4DE
27th April 10-11:30 at Castleton Primary, Hillcrest Road, Rochdale OL11 2QD
1st May 10-11:30 at St Peter's RC Primary School, Middleton, M24 1FL

The workshops below will be delivered by the Occupational Therapy Team and the Neurodiversity Hub

Sensory Processing Difficulties Webinar

To access the Sensory Webinar scan the QR code:



Please watch the 'Sensory Processing Difficulties' Webinar before attending any of the workshops below.

Personal Care from a Sensory Perspective (age 3-19)

We will look at how sensory needs impact self-care and discuss practical day to day strategies.

22nd April 9:30-11:30 at Norden Family Hub, Shawfield Lane Rochdale, OL12 7RQ

Sensory Processing and Anxiety (primary/secondary)

We will look at how anxiety and sensory needs interlink and to recognise triggers. We will share ideas that you can try.

13th May 9:30-11:30 Boarshaw Family Hub, Stanycliffe Lane, Middleton, M24 2PB

Proprioception / vestibular practical workshop (primary/secondary)
We will demonstrate practical, hands-on activities you can try with your child.

24th June 9.30-11.30 Callaghan House, Cross Street, Heywood, OL10 1PU

How to book:

Email: hmr-ndhub@nca.nhs.uk - Please include the workshop you want to attend, your child's name and date of birth in the email

Phone: 0161 206 0606

Please note – it is not appropriate to bring children to the session as we do not have childcare facilities available.

How to access the Neurodiversity Hub - Support for parents and carers - April-July 2026

Information and Advice Sessions

What to expect: You will have the opportunity to access advice and signposting from a range of local support services.

Services available:



SENDclass



SEND Advice Service



Home-Start RAASS



The Neurodiversity Hub

23rd April 9:30am - 11am at St Mary's CE Primary School, Oldham Road, OL11 2HB

30th April 6pm-8pm at St George's Hall, Oakenrod, Bury Road, OL11 4EB

21st May 9:30am-11am at St Peter's RC Primary School, Kirkway, M24 1FL

18th June 9:30am - 11am at Deeplish Primary Academy, Derby Street, OL11 1LT

25th June 6pm-8pm at St George's Hall, Oakenrod, Bury Road, OL11 4EB

9th July 9:30am - 11am at Oak Haven SEMH School, Sutherland Road, OL10 3PY

Advice Line

What to expect: We will discuss your concerns and support available.

Tuesday Advice Line

To book: Call 0161 206 0606 between 8am-12pm on a Tuesday morning. You will then be added to a 'call back' list and a member of the team will return your call between 1pm-5.30pm.

Wednesday Evening Advice Line (once a month)

1st April 20th May 3rd June 1st July

To book: Call 0161 206 0606 between 8am-12pm on the Wednesday morning. You will then be added to a 'call back' list and a member of the team will return your call between 5-7pm.

Drop in sessions

What to expect: We attend Home Start RAASS Parent Support Group. During these sessions a member of the Neurodiversity Hub and the RAASS team will be available to offer signposting and support.

Middleton - Burnside Community Centre, 36 Burnside Crescent Langley Middleton, M24 5NN, 9.30-11.30am

Friday 8th May Friday 5th June Friday 3rd July

Milnrow - Butterworth Hall, New St, Milnrow OL16 3PQ, 9.30-11.30am

Tuesday 12th May Tuesday 9th June Tuesday 7th July

Heywood - Heywood Baptist Church, Rochdale Road, Heywood, OL10 1LE, 9.30-11.30am

Wednesday 22nd April Wednesday 20th May Wednesday 17th June



Dates for the diary

	<u>EVENTS</u>	
Mon 11.05.26 to Thu 14.05.26	 <p style="text-align: center;">Year 6 SATs</p> <p style="text-align: center;"><i>Year 6 SATS</i></p> <p style="text-align: center;"><i>All Year 6 children are required to be in school promptly for 8.30am</i></p>	Mornings
Thu 21.05.26	<p style="text-align: center;"><i>Nursery Story and Song Performance</i></p> 	11.20am EYFS Unit
Fri 25.05.26 to Fri 29.05.26	 <p style="text-align: center;">Half Term</p> <p style="text-align: center;"><i>Half Term Holiday</i></p>	School Closed
Tue 02.06.26	<p style="text-align: center;"><i>Years 1&2 Trip to Knowsley Safari Park</i></p> 	8.45am to 3.45pm
Thu 16.07.26	 <p style="text-align: center;"><i>Year 6 Leavers Assembly</i></p>	2.00pm