

21st March 2025

New This Week:

SWIMMING LESSONS YEARS 3&4



Years 3&4C will be starting their swimming lessons on **Wednesday 26th March**.

Please ensure you send your child to school with swimming kit on this day each week. This will be instead on their PE lesson.

Swimming is **compulsory** and is part of the national curriculum, so **ALL** pupils must go each week.

Years 3&4J will be finishing swimming lessons on Wednesday 19th March. Please ensure that your child has their PE kit in school for this day each week thereafter.

Year 6 Leavers Assembly—Advance notice

This will be held on **Thursday 17th July 2025** from around 2.00pm (Exact time will be confirmed nearer the time)

Change to cut-off time for booking Wise Owls - Now 2.45pm

Please be advised that the cut off time to book Wise Owls has been changed to **2.45pm**. This **MUST** be booked the day before the session required.

Join Mrs Hart for a
'Goodbye' Coffee
on Friday 4th April
From 9am to 10am

In the Treehouse



PLEASE NOTE THAT SCHOOL IS CLOSED TO PUPILS ON MONDAY 31ST MARCH 2025

EGG BOXES NEEDED



Year 1 classes are collecting egg boxes. Please can parents save them and bring them into school. Thank you.



Struggling with your child's school attendance?

Join our school attendance support for parents (SASP) group.

Our Education Welfare service offers a safe space for parents and carers (only) to access confidential peer support, advice, and guidance to overcome these challenges. Refreshments provided.

Upcoming session

Wednesday 23 April 2.30pm – 4.30pm (Meanwood Family Hub, Churchill Street, Rochdale OL12 7DJ)

For more information contact:

T: 01706 925115 E: education.welfare@rochdale.gov.uk



HOME TIME (PICK UP) ARRANGEMENTS

If someone else will be picking up your child from school at the end of the day, or there are any other special arrangements that your child needs to know about, please let the class teacher know when you drop off your child in the morning. Thank you.

BALLS OF WOOL NEEDED PLEASE

If any parents / carers have any spare balls of wool, please bring them into school as school are trying to get a collection of wool together. Thank you.



WELL DONE to all who came to plant a sunflower yesterday.

Mrs Quigley's grow the biggest sunflower competition will end in the middle of May.

Instructions on how to grow your sunflower are below.

You will be asked to return the sunflower to school for measuring and planting out at a date to be confirmed nearer the time as it will depend on the weather so watch this space.

Good luck.



How to look after your sunflower

While your seed is germinating, until you see a green shoot, keep the pot in a darker place, where it is not cold.

Keep the compost damp, but not soggy.

Once you can see a shoot, put the plant pot in a warm and sunny place where it will get lots of light. You could put it outside on a warm sunny day but don't leave it outside at night until the weather is warmer (usually in May) and there are no frosts overnight. Keep it away from slugs and snails too. Keep the compost damp but not soggy. If it is too wet, the roots might rot.

You might like to research ways of giving your sunflower plant extra nutrients, there are ways you can make plant food from home scraps.

<https://sustainableholly.com/15-easy-organic-fertilizers-to-make-at-home/>

<https://www.marthastewart.com/how-to-make-homemade-fertilizer-7481114>

If your plants gets quite tall, you might need to add a stick/stake to to support it - don't tie the plant too tightly to it though or you will snap the stem. It also needs room to move and grow still, so you might also need a bigger pot. You could use a large yoghurt pot with holes made in the bottom.

COULD YOU HELP?

We need large plastic boxes /metal containers/ old planters /tubs or tyres for our new wildlife bird and butterfly garden. Anything that is sturdy enough to take soil and last. From tin bath size to bathtub size. We would also like to paint our tyres, so if anyone has any left over masonry or other outdoor paint, we'd be very grateful.

Please bring them to Mrs Quigley in KS2.



Important Reminders

- FREE DROP IN SESSION
- NO SIGN UP
- TALK OR LISTEN- UP TO YOU



- NO DIAGNOSIS NEEDED TO ATTEND
- ADULTS ONLY

HEATON PARK GOLF CLUB, MIDDLETON RD, PRESTWICH,
MANCHESTER M25 2SW

TIMETABLE 2025

THURSDAY 23RD JAN 7.30PM-9PM
 THURSDAY 20TH FEB 7.30PM-9PM
 THURSDAY 20TH MARCH 7.30PM-9PM
 THURSDAY 17TH APRIL 7.30PM-9PM
 THURSDAY 15TH MAY 7.30PM-9PM
 THURSDAY 19TH JUNE 7.30PM-9PM
 THURSDAY 17TH JULY 7.30PM-9PM
 THURSDAY 21ST AUGUST 7.30PM-9PM
 THURSDAY 18TH SEPT 7.3-9PM
 THURSDAY 16TH OCT 7.30PM-9PM
 THURSDAY 20TH NOV 7.30PM-9PM
 THURSDAY 18TH DEC 7.30PM-9PM

TELEPHONE NUMBER: 07940 560655
 FACEBOOK PAGE: SEND DADS SOCIETY

Rochdale Parent Carers Voice



KYP Community FOOD PANTRY

Every Wednesday and Friday
9:30 AM - 4:30 PM

£4 FOR UP TO 15 ITEMS
CANNED FOOD, VEGETABLES, FRUIT, FISH AND MUCH MORE

FOR MORE INFORMATION, PLEASE CONTACT
01706 630140
reception@kyp.org.uk

Funded by UK Government | THE NATIONAL LOTTERY COMMUNITY FUND

MISSING LIBRARY BOOK

We have a missing Rochdale library book that is now very overdue.

Please could everyone have a good look for 'Lottie Luna and the Bloom Garden'.

There will be a small reward for its safe return to Mrs Quigley.

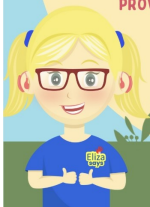


JOIN ELIZA SAYS EASTER HAF HOLIDAY HUB

Free holiday activities & food
free for children & young people aged 5-11 who are in receipt of benefits-related Free School Meals.

Milnrow Cricket Club
April 14-17

SEND PROVISION
SIGN LANGUAGE
MULTI-SPORTS
SENSORY & MESSY PLAY
CONFIDENCE BUILDING
NUTRITION EDUCATION
MUSIC & MOVEMENT
ARTS & CRAFTS
LOTS OF EXCITING OUTSIDE PROVIDERS JOINING US FROM KARATE TO YOGA & SO MUCH MORE



For more information email
Elizasays@hotmail.com



The following website is an online resource providing on Ofsted registered childcare, activities and community groups, employment and training, parenting advice and support, youth support, and Early Help support available to families and those working with them. If you need any help finding childcare or family support, please contact the Family Information Service on 01706 719900 or email: family.info@rochdale.gov.uk

<https://www.ourrochdale.org.uk/kb5/rochdale/directory/family.page?newfamilychannel=0>



Easter Egg competition Thursday 3rd April

Please decorate a hard boiled egg, write your name and class on and bring to the canteen from 8:30am. There will be an Easter Egg as a prize for the best decorated egg from each class.

Ideas!! Google Easter Egg competition for more ideas!!



Or you could decorate your egg with a pattern like the picture at the top.

The choice is yours...be creative!



NEWSPAPERS WANTED

The children in Year 1 are currently working with newspaper in Art.

If you have any old newspapers, please could you save them and send them in to a member of the Year 1 staff team. Thank you.



Home learning ideas launch

Monday 24 to Friday 28 March

Celebrate the launch of our new home learning ideas page on Our Rochdale.

Each day we will be looking at different ways you can help to support your child's development at home.

This will include useful tips and methods that can be used during your everyday activities and routines.

Date	Topic
Monday 24 March	Nursery rhymes and songs
Tuesday 25 March	Noticing sounds around you during your everyday activities and routines
Wednesday 26 March	Talking about the things you do everyday
Thursday 27 March	Following your child's lead
Friday 28 March	Sharing books and stories



Scan the QR code to find out more or visit OurRochdale.org.uk/HomeLearning



SCAN ME

ROCHDALE
BOROUGH COUNCIL

Dates for the diary

Thursday 27.03.25 Thursday 27.03.25	<p><i>Nursery Mark Making Stay and Play Session (All parents welcome)</i></p>  <p><i>Visit to Spotland Library</i></p>	<p>10.45am to 11.45am in Nursery</p> <p>Year 1 children</p>
Monday 31.03.25	<p><i>INSET DAY—School closed to ALL pupils</i></p> 	
Thursday 03.04.25	 <p><i>Easter Egg Competition</i></p>	All Years Groups
Friday 25.04.25	<p><i>Years 3 and 4 Trip to Chester</i></p> <p><i>(Deva Roman Experience)</i></p> 	Years 3 and 4
Friday 09.05.25	 <p><i>Visit to Smithills Farm</i></p>	Reception children
Thursday 17.07.25	<p><i>Year 6 Leavers Assembly</i></p> 	Apx 2pm Time TBC

Late Arrivals This Week:

DAY	NUMBER OF LATE CHILDREN
Monday	12
Tuesday	7
Wednesday	7
Thursday	7
Friday	6

A total of **39** children were **late this week** !

A big **“Thank You”** to those who arrive on time every day.

The main gates open at **8:30am**. Your child needs to enter the class room at **8:45am**. The class room doors close at **8:51am**. If your child arrives after this time they are **LATE**.

Attendance



School fines for unauthorised absence have changed.

The government (Department for Education) has introduced a new national framework for penalty notices which parent/carers must pay if they take a child out of school during term time, for holidays or unauthorised absence. The changes came into effect for fines issued after 19 August 2024. We urge parents/carers not to interrupt their children’s schooling and talk to the office staff before booking leave of absence.



2024 – 2025 Term Dates and other useful information is on our website:
www.meanwood.rochdale.sch.uk