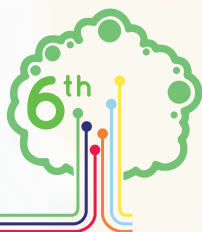


Melksham Oak
Community School



SIXTH FORM PROSPECTUS



Melksham Oak is proud to be part of The White Horse Federation Multi-Academy Trust.

The White Horse Federation is a multi-academy trust that supports primary, secondary, and special schools in the south of England. At our heart is the passion and determination to develop the type of schools that we would be proud to send our own children to. To achieve this, we blend a relentless drive for academic excellence with a shared moral purpose and set of values, while also ensuring there is a whole lot of fun and happiness at our schools.

With a track record of improvement in standards and attainment, TWHF believes that every child should achieve all that they are capable of and more, regardless of background, culture, heritage, or ability. We genuinely believe that working in partnership with our schools, the pupils and their parents, and the wider community serves to create the best possible outcomes for our children.

Dr Nicholas Capstick OBE
CEO and Board Member



WELCOME

Welcome to the Melksham Oak Sixth Form prospectus. This prospectus provides you with information about our sixth form, the courses available, and the support students will get in the next stage of their education at Melksham Oak Community School.

We are delighted to welcome all students to our sixth form, where we offer a range of courses to meet the needs of all learners. These include:

- A-level Courses
- Level 3 Courses, Such as BTECs and Cambridge Technical Awards

Our sixth form open evenings are an opportunity for prospective students and parents to meet current students studying the courses, as well as the subject teachers, to gain an insight into the courses and opportunities available.

As part of our commitment to supporting students, we interview them before they begin their sixth form studies to ensure they take appropriate courses that match their aspirations and ambitions and go on to achieve their best. All prospective sixth form students also attend a two-day induction programme to get them up to speed with the demands and expectations of studying level 3 qualifications.

Everyone involved in the post-16 provision at Melksham Oak is fiercely committed to meeting the educational needs of our students and the community needs of the people of our town and the surrounding villages. We are dedicated to providing the best teaching, range of subjects, facilities, and support for students to allow them to achieve the highest grades possible while enhancing their personal development.

We are very proud of our sixth form and the wonderful achievements of our students. Our sixth form is an integral part of our school community and the local community. We work in partnership with parents to support and challenge our students to raise their aspirations, build their capacity for lifelong learning, and achieve success.

We look forward to meeting you over the coming year and welcoming you to our sixth form.

Steve Phillips
Assistant Principal
Head of Sixth Form



“PLACING YOU AT THE CENTRE OF EVERYTHING WE DO.”

Our Core Values

RESPECT ourselves, each other, our school, and our community.
Have **AMBITION** to achieve great things.
Take **PRIDE** in everything we do.



“

OFSTED SAID THAT:

“STUDENTS ARE APPRECIATIVE OF THE PASTORAL SUPPORT THEY RECEIVE FROM STAFF. THEY FEEL KNOWN AS INDIVIDUALS AND CARED FOR. THEY FEEL SAFE AND ARE COMFORTABLE IN APPROACHING STAFF IF THEY HAVE A CONCERN.”



SIXTH FORM AT MELKSHAM OAK COMMUNITY SCHOOL: THE RIGHT CHOICE FOR YOU

OUR ETHOS

At Melksham Oak Sixth Form, we firmly believe that we can provide the ideal environment for the next stage of your education. We have a friendly and vibrant atmosphere where we build positive and supportive relationships with all our students. Our teaching staff provide outstanding teaching and learning for all our sixth form learners who go on to achieve excellent results. Their depth of knowledge and subject expertise allows all our students to flourish and achieve their full potential within a challenging but caring environment. We look to raise the aspirations and ambitions of all our students so they feel they can achieve their very best.

Two years of study in the sixth form is great preparation not only in academic terms, but also in growing awareness of oneself in a supportive, educational environment. We are committed to doing our best for you – both intellectually and socially – therefore we have rigorous academic demands and expect you to do your best to meet your academic potential. We are aware, however, of the need to provide a whole variety of other activities and opportunities that will develop your leadership skills and help you to contribute to both the school and the broader local community.

Our students' well-being is at the forefront of our everyday practice and we pride ourselves on providing an excellent pastoral support network. Our sixth form team is highly experienced and works hard to support every individual in becoming resilient and confident. We also have access to expert specialist support and guidance through our pastoral manager and her network.

Inclusivity is fundamental to us and something we pride ourselves on at Melksham Oak. Our belief is that education is not just about academic success but also preparing young people to be well-informed citizens of the future who respect themselves, one another, their local communities, and the wider world. Each student is treated as an individual, and we promote tolerance, empathy, and kindness to all.

All students will find there is a difference in their relationship with staff as they work within the sixth form. Most are pleasantly surprised to find working in smaller groups, consisting of like-minded students, leads to a more relaxed atmosphere and that there is a more adult approach to learning and a greater mutual respect. Students and staff have the same aim and work together to reach their common objective – to maximise the potential of every student.



SIXTH FORM ENTRY: THE KEY EVENTS

AUTUMN TERM

Students need to research the courses and options available so they are in a position to make informed choices. Support is available from form tutors, subject staff, the learning director of the sixth form, and the career support adviser. It is important that all the potential sources of information and guidance are used effectively and that students are thorough in their research.

JANUARY

Apply using the application form, which should be completed and returned to main reception by 8th January 2020.

FEBRUARY/MARCH

All students who apply for a place in the sixth form will be interviewed by a member of the sixth form team or a senior member of staff. Areas for discussion during the interview will include predicted grades, subject choices, career aspirations, and interests. Follow-up interviews and support will be provided for individuals as required, and subject choices will be finalised during this process.

MAY/JUNE

The examination season! Much will depend upon the outcome of examinations as far as students' future options are concerned. Please remember that the grades you get at GCSE will determine which level 3 courses you can take in year 12.

JULY

We require all prospective students to attend the two-day sixth form induction event. This focuses on developing the students' skills in time management, leadership, team work, and resilience, as well as their advanced study skills. We also explore the transition between year 11 and year 12, discuss the increased levels of independence and self-motivation required during this transition, and give students the opportunity to meet their new tutor group.



AUGUST

Students will receive their GCSE results in mid-August. At this stage, advice will be available for students and parents/guardians, if required, through our teachers, the head of sixth form, and our careers lead.

SEPTEMBER

At the beginning of the September term, we host our sixth form induction, which all students planning to join the sixth form are expected to attend. The early weeks of term also provide the opportunity for students to finalise their course choices and change subjects if necessary.



OUR SIXTH FORM CURRICULUM

Every year, our aim is to provide courses that meet the needs and interests of our students. The courses we offer fall into two categories:

Level 3 A-level Courses

If a student completes two years of study, they will complete the full A-level course.

Level 3 BTEC and Cambridge Technical Award Courses

These courses are available in a range of subjects and result in grades equivalent to A-level grades.

LEVEL 3 COURSES

The majority of students will study four courses in year 12, with a choice between studying four subjects or three subjects and an additional course, such as the EPQ (Extended Project Qualification), Young Enterprise, or Duke of Edinburgh. In year 13, students will have the opportunity to progress onto four A-level courses, although it is most likely they will drop one and reduce their workload to three subjects. We believe this gives students greater flexibility in their choices of study programmes in year 12, before making a final decision about which exams they will sit in year 13.

MAD DOG RUGBY PROGRAMME

We are very fortunate to run a rugby programme which is led by Lewis Moody, former England captain, and his team of coaches. The programme can be taken as a subject option and offers those interested in rugby and performance sport the opportunity to work through a programme of activities that covers nutrition, video analysis, performance analysis, and game management. For more details, please visit <https://maddogsport.com/>.

ENGLISH AND MATHS GCSES

Students who do not achieve at least a grade 4 in their English language or maths GCSEs in year 11 will be required to re-sit the exam until a grade 4 is achieved. Most employers, university courses, and training providers require a minimum of a grade 4 in these two GCSEs. Students who need to re-take their maths or English GCSEs will be given timetabled lessons with specialist subject teachers to support them.

SUPPORT TO MAKE THE RIGHT DECISIONS

All students who apply will have an interview with a senior member of staff to discuss their suitability for sixth form and their aspirations for the next two years. As part of the interview process, we will discuss the combination of subjects and courses with students in light of their target grades and aspirations. Final agreement about courses to be studied in September will take place after the results are published in August, and support is available to help with this.

ENTRY REQUIREMENTS

As a basic requirement for entry into the sixth form, students will be required to have five GCSEs grade 4 or above (or equivalent). However, in most subjects, it will be necessary to have achieved a minimum grade. For example, studying physics will require a grade 7 or above. Individual department course details will make it clear what their specific entry requirements are. We know how important it is that students discuss their plans during the interview and with the support of the relevant subject teachers to ensure we establish their suitability for the course.

BEYOND THE CLASSROOM

Alongside this selection of courses, we offer a diverse range of clubs and activities for our students to be actively involved in. They include:

- Community Volunteers
- Environment Group
- Young Enterprise
- Charities Group
- Rugby
- Football
- Five-a-side Football
- Gym
- Trampolining Club
- Drama Club and School Performances
- Dance Club
- Bands



SUPPORTING SUCCESS

DEVELOPING LEADERS OF THE FUTURE

All sixth form students are required to be actively involved in some form of student leadership within the school. These roles range from being student president, head of house, or student mentor to acting as a subject ambassador or leading community-based projects.

Every student in the sixth form will be allocated to one of the four houses. The house system was set up with three key strands in mind: attainment, leadership, and competition. In the sixth form, there are opportunities for students to become a head of house or deputy head of house. Students in these positions will lead on a range of activities, including assemblies, mentoring, interviews, and competitions.

A range of competitions run throughout the year for staff and students so they can gain points for their houses and win the coveted house cup, with the final events of the year being the sports days and house relays.

OUR ASPIRE PROGRAMME SUPPORTS ALL

Each student is placed in a tutor group which meets every morning to take part in the Aspire programme. Sixth form tutor groups are made up of year 12 and year 13 students, which encourages a greater mix between students from both year groups and helps them share experiences. The tutors are key figures and play an important role in supporting students academically and pastorally, while students also follow a programme of tutorials that provides additional academic and pastoral support and challenge.

The Aspire programme is delivered during assemblies, study skills sessions, and tutor sessions, as well as events run by external speakers. Some of the topics covered include:

- Developing Employability Skills
- The World of Work
- Safe Driving Awareness
- Basic Car Maintenance
- Health and Well-being
- Cooking on a Budget
- Personal Finance
- Effective Interview Techniques
- Critical Thinking
- Personal Safety, Including E-safety

All year 12 students also undertake an Aspire role to broaden and enrich their curriculum experience. Experience in these roles is very useful to add to university, job, and apprenticeship applications and filling one of these positions is an excellent opportunity to gain work experience or skills that can be used in future education or employment.

Currently, students are able to take part in the Young Enterprise or Duke of Edinburgh programmes, volunteer in the community, or act as a school ambassador, subject ambassador, learning mentor, or house mentor.

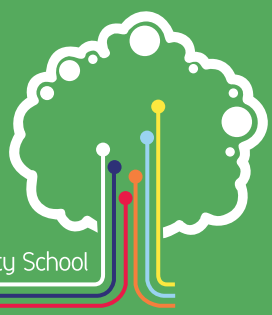
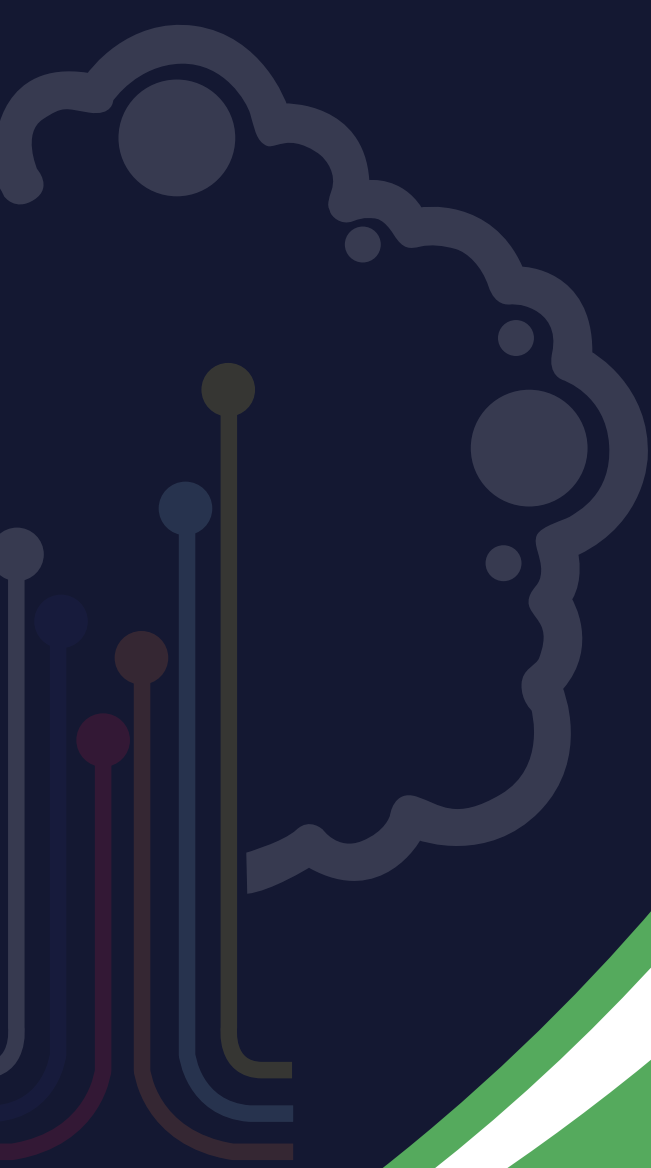
CAREERS ADVICE AND GUIDANCE FOR UNIVERSITY AND OTHER POST-18 OPTIONS

Melksham Oak Sixth Form students have access to the school's careers adviser, Mrs Penney. She works with groups of sixth form students as well as offering one-to-one careers interviews. Year 12 and year 13 students are given extensive support with their course choices for UCAS applications, personal statements, and interview practice, as well as apprenticeship applications. Year 12 students also take part in a UCAS convention day in term 3 and receive continued support through a series of additional sessions back in school to further their post-18 planning.

We regularly arrange talks for our sixth form students, with speakers including employers and apprenticeship, gap year, and internship providers, and we work closely with the Wessex Inspiration Network (WIN), which supports students with higher education decision-making by running one-to-one sessions and workshops throughout the year.

For students who want to complete applications to attend Oxford or Cambridge University, Melksham Oak Sixth Form runs a specialist Oxbridge programme to support them through the process. This level of support is also offered to students interested in studying medicine or veterinary science.

All our year 12 students undertake a week's work experience in a field that they have direct interest or career aspirations in. The students are supported in seeking this work experience, but it is their responsibility to make the initial contact, as this is a valuable experience in its own right.



Melksham Oak Community School

A Technology College

**Melksham Oak Community School,
Bowerhill
Melksham
Wiltshire
SN12 6QZ**

T: 01225 792700

E: admin@melkshamoak.wilts.sch.uk



Proud to be part of The White Horse Federation Multi-Academy Trust | www.twhf.org.uk