



Art & Design: Fine Art A level



Course outline:

Students will have the opportunity to extensively study each of the following through the two year course:

- Drawing
- Printmaking
- Photography & Digital Manipulation
- Painting
- Ceramics & Sculpture
- Mixed Media
- Textiles

Students are encouraged to explore, experiment and develop a range of artistic techniques and mediums through research and investigations into artists and observations.

Life drawing sessions are offered to expand these directives along with regular visits and workshops to support and extend our students' development and understanding

Subject specific entry requirements

Grade 5 or above at GCSE in Art & Design.

Grade 4 or above in English Language.

Topics/Units:

Coursework—60%

Practical Portfolio

Candidates produce a portfolio of work from a starting point, topic or theme of their own choice. The focus is on including work that shows exploration, research and acquisition of techniques and skills. This portfolio includes a written **Related Study** that extend the student's practical portfolio of work and shows a historical and contextual understanding.

Controlled Assignment—40%

Candidates select one starting point from the examination paper issued in February. Prior to the 15 hour practical examination, students are given the opportunity to plan and develop a sketchbook of preparatory studies to support the development of their final piece.

Careers pathways

This is an A level so enables students to access foundation and degree courses as well as higher level BTEC qualifications and college diplomas.

In the past our students have pursued courses in illustration, animation, interior design, architecture, fine art, etc. at all levels.

Art A-level opens doorways into numerous creative careers; theatrical make, animation; interior design, photography, costume design, architecture, illustration, fashion make-up, surface pattern, garden design, etc.

Student feedback:

"I've loved the course and it's allowed me to get onto an illustration course at Uni in September."



Biology

A Level



Course outline

Studying Biology will equip you with knowledge and practical skills across all the most significant and interesting areas of the subject, from molecular biology, microbiology, genetics and physiology, to applied biology, ecology and conservation. You will be encouraged to adopt a critical and scientific approach to the subject, which will provide an excellent basis for a wide range of science or health-related careers.

Topics/Units

- Biological molecules
- Cells
- Organisms exchange substances with their environment
- Genetic information, variation and relationships between organisms
- Energy transfers in and between organisms
- Organisms respond to changes in their internal and external environments
- Genetics, populations, evolution and ecosystems
- The control of gene expression

Assessment:

100% examination

Careers pathways

An A Level in Biology can open a range of doors to you both a higher education and in the world of work.

The following list is a sample of career areas which require biology:

Agriculture, Veterinary Science, Horticulture, Floristry, Food and Drink Industry, Catering Technology, National Resources Industry, Environmental Health, Conservation, Ecology, Biomedicine, Dentistry, Pharmaceutical Industry, Radiography, Nursing, Dietetics, Teaching, Psychology, Sports and Fitness.

Subject specific entry requirements

Grade 7 or above in Biology GCSE

Grade 5 or above in Maths.

Student feedback:

"A really fascinating course that's opened my eyes beyond Biology we've done in school". Former Year 13 student



Business Studies

BTEC National Diploma (double award)



Course outline:

The double award Diploma in Business is a course in which the focus is on the student. Learners will have to carry out investigations, solve problems and draw conclusions. Assignments are set wherever possible on real life situations. Learners will be required to carry out the investigations, visit firms, interview people, read articles in the press and business press, use case studies and textbooks.

The course is varied and the emphasis has to be on the vocational element. Part-time work would be an advantage. Students are encouraged to use a variety of I.T. skills particularly for presentation.

Students taking this option will also take part in the Sixth Form **Young Enterprise** course delivered during the commentary studies program.

Topics/Units:

You will complete 8 units across the two years - 4 Core units

Unit 1 Exploring Business
(coursework)

Unit 2 Developing a Market Campaign (exam)

Unit 3 Personal and Business Finance (exam)

Unit 4 Managing an Event
(coursework)

Unit 5 International Business
(coursework)

Unit 6 Principles of Management
(exam)

Unit 8 Recruitment and Selection
(coursework)

Unit 9 Training and Development
(coursework)

Assessment:

External exams (45%) and coursework units (55%).

Careers pathways

This course is worth the equivalent of two A levels and offers students the opportunity to study further business related courses at university or college plus is popular with those looking at the apprenticeship route or those going straight into employment.

Student feedback:

“a really good course that has allowed me to develop a much deeper understanding of how the world of business works from small independents to large multinationals.”

Subject specific entry requirements

GCSE in Business studies would be beneficial but not essential.

Students must have a grade 5 for Maths and English.



Business Economics

A level



Course outline:

This A Level course looks closely at the key elements of Economics from consumer demands to marketing to stock markets to financial markets to globalisation.

This course is based on current events and therefore much use is made of newspapers, magazines and TV programs. In addition, there are many investigations so use is made of the internet and CDROMs. To support students with their studies visits will take place in a local, national and international setting. Wherever it is possible great effort is made to relate the course to the students own experience. In lessons, discussion and debate are important techniques.

Topics/Units:

Markets, Consumers and Firms

The unit covers the characteristics students would need to develop to be successful in business and how new or existing businesses generate their product or service ideas and test them through market research.

The Wider Economic Environment

This unit considers the market that the business may be operating in; how competition in the market and macroeconomic change is likely to affect it and how businesses can seek to minimise uncertainty throughout their actions.

The Global Economy

The aim of this unit is to introduce the student to the world of international business and issues which a company trading internationally would have to consider.

Making Markets Work

In this unit, students consider why certain markets fail; how government decision making affects the economy and markets in which companies operate.

Assessment:

100% final examinations

Careers pathways

This A Level course allows students the opportunity to study economics at a higher level, usually as a degree but also creates opportunities for those interested in apprenticeships and employment straight from school.

Students studying this course have gone on to study Financial Studies, Business/Economics, Business Management and Business Administration.

Student feedback:

“doing this course has allowed me to go on to study Economics at university and has opened my eyes to the world of economics that lies ahead.”

Subject specific entry requirements

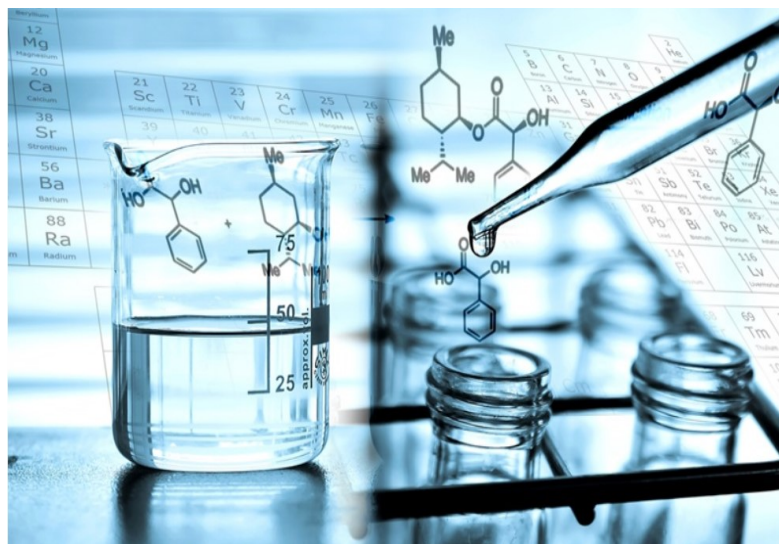
GCSE in Business studies would be beneficial but not essential.

Students must have a grade 5 for Maths and English.



Chemistry

A Level



Course outline:

Chemistry is a methodical subject. It involves systematic learning of facts but also encourages you to analyse the facts, draw conclusions and make predictions. Chemistry is a practical subject and you will spend a significant amount of time conducting experiments in one of our modern purpose built and very well equipped laboratories.

We are fortunate to have a superb team of teachers and technicians to support our students in this engaging subject.

Topics/Units:

Physical chemistry, including:

Atomic structure, Bonding, Oxidation and reduction

Inorganic chemistry, including:

Periodic table, Groups 2 & 7

Organic chemistry, including:

Alkanes, Alkenes, Alcohols &

Organic analysis

Physical chemistry, including:

Thermodynamics, Rate equations, Acids and bases

Inorganic chemistry, including:

Period 3 elements, Transition elements

Organic chemistry, including:

Aromatic chemistry, Amino acids, proteins and DNA

Nuclear magnetic resonance

Assessment:

100% final examinations

Careers pathways

Chemistry is often described as the "Central Science". It is a **prerequisite** for many courses at university and for many areas of employment. It is also a long-established and respected qualification that allows progression into a number of subjects at university, including medicine, for which it is usually essential.

Chemistry is also a highly valued A-level or degree subject for people going into Law, Accountancy, Journalism, Business and Management – to name but a few.

Student feedback:

"I'm very excited to be going to university to study medical science in September and chemistry is a big part of this"

Subject specific entry requirements

Grade 6 or above in all GCSE Sciences

Students must have a grade 5 for Maths.



Computer Science

OCR A level



Course Outline:

Computer Science is an ideal course for those who want to develop their problem solving and logic skills.

It will also appeal to students who are practical and like to create.

It is a discipline that is rewarding and challenging; developing capabilities in solving multidimensional problems requiring imagination and decomposition.

CS touches our lives in almost everything we do; understanding these different dimensions of computing is part of the necessary skill set for an educated person in the 21st century.

Topics/Units:

How to define problems using Boolean logic, manipulate and simplify expressions.

Characteristics of networks including protocols and standards.

How a CPU functions and the factors that affect the performance of a computer system.

Programming algorithms to solve complex problems and understand the nature of applications development.

Develop an expanded maths focus, understanding primitive data types and their representation.

Careers pathways

Achievement of this qualification can support progression to go on and study in a Higher Education institution either on relevant Computer Science courses or support progression on to other degree courses.

We also have some students who have gone onto IT based apprenticeships including the MOD.

Subject specific entry requirements

5 GCSEs at Band 4 or above. There is no requirement to have studied Computer Science at GCSE.

Student feedback:

"I have gained a wealth of knowledge studying this course. The course offers a variety of topics which are interactive and challenging"

Criminology:

Level 3 Applied Diploma



Course Outline:

Not all types of crime are alike. What different types of crime take place in our society? How do we decide what behaviour is criminal? What is the difference between criminal behaviour and deviance? How do we explain why people commit crime? What happens to those who commit a crime? Why and how do we punish people? An understanding of criminology is relevant to many job roles within the criminal justice sector, including police officers, probation and prison officers, and social workers. With their critical thinking, analytical and communication skills, criminology graduates are also attractive to employers outside the criminal justice sector in areas such as social research and politics. The WJEC Level 3 Diploma in Criminology has been designed to provide learners with underpinning knowledge, understanding and skills to progress to further study and training. It offers exciting and interesting experiences that focus learning for 16-19 year-old learners and adult learners through applied learning, i.e. through the acquisition of knowledge and understanding in purposeful contexts linked to the criminal justice system.

Topics/Units:

Changing awareness of crime – You will learn about a variety of crimes that are under-reported and have a low level of public awareness.

Criminological theories – You will apply your understanding of the public perceptions of crime and campaigns for change with criminological theories to examine how both are used to set policy. You will consider why people commit crime and whether these theories are credible.

Crime scene to court room – You will develop the understanding and skills needed to examine information in order to review the justice of verdicts in criminal cases. You will follow a crime from the initial crime scene to the investigation by the police and other personnel involved in criminal investigations.

Crime and punishment – You will develop skills in order to evaluate the effectiveness of the process of social control in delivering policy in practice. There is a focus on agencies in the criminal justice system such as the police, Crown Prosecution Service, probation and prisons.

Careers pathways

Students who study criminology may wish to go on to further studies at university. Many universities offer the opportunities to combine awards, for example you may be able to study for a degree in Criminology and Psychology/ Law. Studying Criminology at university (either as a whole degree or part of your award) may include topics such as victimology, criminal psychology, youth offending, hate crime, and terrorism.

Careers directly linked to the study of criminology include working in HM Prison Service, Probation Service, the Courts and Tribunals Services, the police force, local authorities or Youth Offending Teams.

Student feedback:

“This is a fascinating course and I’ve have really enjoyed studying different types of crime and the justice system.”

Subject specific entry requirements

5 GCSEs at Band 4 or above, including Maths and English Language



Creative Media Production

BTEC Level 3 Extended Certificate



Course outline:

Creative Media Production is a growth industry especially in the west country with the likes of Netflix and Channel 4 moving into the area. Our course allows you to explore the different aspects of media production and to gain valuable skills and experience.

This course is a practical and theoretical study of different forms of media production and students will gain valuable skills and knowledge within a superb setup with state of the art technologies and facilities available to them.

Topics/Units:

Media production techniques
Media Representation
Pre-Production planning
Responding to a commission
Specialist units on film production

Assessment:

There is one externally assessed exam and one externally assessed piece of course work. All course work will be evidenced, internally verified and externally moderated. Assessment is by a combination of: oral presentation, written report, finished product and audio/visual presentation.

Careers pathways

The BTEC courses prepare students directly for the workplace, apprenticeships or Higher Education.

The Media Industry Includes Television Production, Film Production, Production Management, Video editing, film studies, and media studies.

Our students have gone onto study film production, film studies and film making at university and others have gone into employment in media production companies.

Subject specific entry requirements

The course is suitable to students who have achieved a pass grade or above in BTEC Level 2 Creative Media Production or students who have an interest in the media industry specifically film and television production.

Student feedback:

"I will be going to Portsmouth Uni to study film production and I'm excited to show them the skills I've learnt at MOCS"



Drama

A Level



Course outline:

This Drama A Level has been designed to be a practical, engaging and creative course for learners to study. It will provide you with opportunities to interrogate drama and the work of others, to explore a range of drama as a practical art form, and to work independently to create your own drama performances making informed artistic choices. The main purpose of this qualification is to allow you to study drama and theatre in an academic setting, interrogating this art form and applying your knowledge and understanding to the process of creating and developing drama and theatre and to your own performance work.

Subject specific entry requirements

9 - 4 in GCSE Drama / dance or BTEC L2 Merit or
GCSE 9-4 English Lit / Lang + drama experience

Topics:

Investigating practitioners work.

Developing Skills and Techniques for Live Performance

Group Performance Workshop

Interpreting Classical Text for Performance:

Assessment:

There are 4 units, of which 3 are mandatory and 2 are external. Mandatory content (83%). External assessment (58%).

Careers pathways

This course offers an excellent development of performance skills as well as a breadth of subject specific knowledge from within the performing arts sector which are students have taken on to study at a higher level. Students have gone on to study performing arts at degree level whilst others have gone onto specialist drama colleges/schools.

Student feedback:

"by doing this A level I have developed my skills and confidence so much with the great support of my teachers"



English Language A Level



Course outline:

The English Language A Level Course introduces advanced language study and develops a students' ability to write for a variety of audiences and purposes. You will discover linguistic frameworks and how these can be used to analyse and interpret language.

This home study course provides the perfect opportunity for students to improve their language skills and gain an understanding of the underlying structures of English, both spoken and written.

Topics:

Paper 1: Language, the Individual and Society (40%)
A: Analysis of a given a text from a different historical text and the language used.

B: how children develop language – it could be children's speech, their writing or their multimodal communication.
Paper 2: Language Diversity and Change (40%)

A: The way language changes depending on who it comes from.

B: Analysis of two writers' attitudes towards language change and how they express such attitudes.

Coursework: Language in Action (20%)

This consists of two equally weighted elements:

- A language investigation (2,000 words)

A piece of original, creative writing and a commentary.

Careers pathways

English Language is a strong A level to take into a range of different subjects as well in it's own right.

Students have used this A level to support their study of editing, journalism, linguistics, law, media, politics, history, teaching and marketing.

Subject specific entry requirements

A grade equivalent to at least a 5+ grade at GCSE in English Language or English Literature.

Student feedback:

"My English language A level has helped me massively in gaining a place on a law degree at Southbank Uni because of the skills I've learnt"



English Literature

A Level



Course outline:

Pupils will study one Shakespeare play in detail. They will also study a collection of poems from a wide range of poets. These could include Byron, Keats, Browning, as well as more modern poets like Duffy and Armitage. They will need to analyse a given poem from their Anthology and be able to argue their opinion on the poem itself.

World War One Literature:
Pupils will study three texts for this exam- one drama, one prose and one poetry selection from a list provided by the exam board.

Topics:

Love through the ages:
in-depth analysis of plays and poetry through the ages relating to love.

Prose: Pupils will then be given an extract from one of their studied texts and will be expected to argue their opinion on the given extract
World One Literature.

Assessment:

Paper 1: Love through the ages (40%)

Paper 2: Texts in a shared context (40%)

Coursework (20%)

Careers pathways

A large number of students have continued their English Literature studies at degree level in a variety of universities. Others have used their A level to support their studies and career paths in a variety of different subjects such as law, media studies, advertising and marketing, creative writing, journalism and teaching.

Subject specific entry requirements

A grade equivalent to a 5+ grade at GCSE in English Language or English Literature

Student feedback:

"A great course with some great teachers who clearly love literature"



English Media A Level



Course outline:

During this two year course you will develop a detailed knowledge and understanding of how Media is used in modern day society from the printed form to radio to television to online Media and digital media.

This course is assessed through two exams at the end of Year 13 and a coursework component as well as on-going assessments and project work in Year 12. You will learn a range of media theories and explore texts in different industries; for example, the *Daily Mirror* for the newspaper industry and *Late Night Woman's Hour* for radio.

Topics:

You will study the following:-
Media language, Representation, Media industries, Audiences, Media contexts, Advertising and Marketing.
Study and analyse of the use of the following:-

Film, Newspapers, Radio, Video games, Digital media and Social Media

You will be learn and develop in-depth knowledge of the three main media industries. They are Television, printed Media and Online Media. You'll have studied *No Burqas Behind Bars* and *The Jinx*, *Vogue* and *The Big Issue* and *Zoella* and *Attitude*.

Assessment:

Coursework: 30%.

Exam One: 2hrs15, 35%.

Exam Two: 2hrs30, 35%.

Careers pathways

A good number of students will go on to study marketing at university as well as courses in journalism, media studies, advertising, public relations, digital culture and communication studies.

Other students have used their English Media A level to pursue apprenticeships with media and marketing companies as well as business management apprenticeships.

Subject specific entry requirements

Grade 5 or above in English Language or English Literature.

Student feedback:

"during this course I have learnt a huge amount about how use of media affects every part of our society and how it influences our thoughts and decisions"



INTEREST EPOQ PLAN
RESEARCH EPOQ
PRODUCTION EPOQ
REVIEW EPOQ
LOG EPOQ
COMPLETE EPOQ
INTEREST EPOQ
PRODUCTION EPOQ
AREA EPOQ
FOR EPOQ

INTEREST EPOQ PLAN
RESEARCH EPOQ
PRODUCTION EPOQ
REVIEW EPOQ
LOG EPOQ
COMPLETE EPOQ
INTEREST EPOQ
PRODUCTION EPOQ
AREA EPOQ
FOR EPOQ

INTEREST EPOQ PLAN
RESEARCH EPOQ
PRODUCTION EPOQ
REVIEW EPOQ
LOG EPOQ
COMPLETE EPOQ
INTEREST EPOQ
PRODUCTION EPOQ
AREA EPOQ
FOR EPOQ

No direct pathways to a career but this does help valuable skills which will support study at university, apprenticeship or with employment as you have to work independently to succeed.

- research skills
- ICT skills that will enhance the production of the report and/or the development of the project
- project management skills
- the format and structure of accepted academic forms of research report
- referencing, the evaluation of sources and the prevention of plagiarism
- presentation skills

The topic/subject of the project is selected by the student and is based around a topic/subject that the student has a personal interest in or something that captures their imagination.

This is done internally as part of an on-going process and this is recorded in the students' Production Log. Students' projects are assessed against the following criteria:

Developing & Realising the project.

Review.

Quality of presentation.

All projects are then moderated and assessed externally.

Grade 5 or above at GCSE English Language.

“I got an A in my EPQ which meant that my uni offered me an offer one grade lower than those who didn't to it”



French

A Level



Course outline:

As well as developing their speaking, listening, reading and writing skills, students will have the opportunity to study aspects of the culture and life of the country through topics such as: the changing nature of the family, the cyber family, the role of voluntary work in society. Students also study Cinema, Music and Art. Students also have to read a novel. New skills will be introduced such as translating from and into the foreign language and using the foreign language to argue a case and present viewpoints in both speaking and writing.

Topics:

- culture and life of France
- the changing nature of the family,
- the cyber family,
- the role of voluntary work in society
- French literature
- French cinema, Music and Art

Assessment:

There are 2 core themes in the A level specification:

Social Issues and trends
Political and artistic culture

In addition you will have to study either two texts or a text and a film.

Texts or text and film will be assessed in paper 2.

Paper 1: Listening, reading and writing

Paper 2: Writing

Paper 3: Speaking

Careers pathways

It is becoming more and more desirable for people intending to work in a wide range of careers to have fluency in one or more foreign language. According to a recent study, many employers will pay between 8-20% more salary for employees who use languages at work.

Our students have gone onto to study French at university and also gone onto courses where French has been the second subject such as International business management with French or European studies with French.

Subject specific entry requirements

Grade 5 or above at GCSE in French

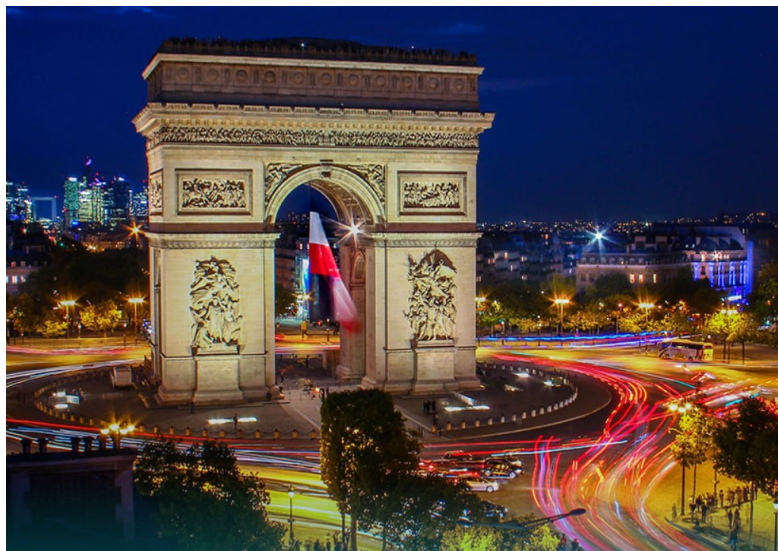
Student feedback:

“studying French at A level has been great and I will be using it as part of my university course in International Business Management next year”



Health & Social Care

BTEC



Course outline:

Equivalent in size to one A Level. 4 units of which 3 are mandatory and 2 are external. Mandatory content (83%). External assessment (58%).

All the content of the qualification is mandatory and is based on the person-centred approach and values needed to work in the health and social care sector. The mandatory units focus on:

- Human Lifespan Development
- Meeting Individual Care and Support Needs.

Topics: Some of the following

Unit Mandatory unit Developing Effective Communication in Health and Social Care
Specialist optional units – Equality, Diversity and Rights in Health and Social care.
Health, Safety and Security in Health and Social Care.
Through the Life Stages.
Anatomy and Physiology for Health and Social Care
Sociological Perspectives for Health and Social Care
Psychological Perspectives for Health and Social Care
Values and Planning in Social Care
Caring for Children and Young People
Safeguarding Adults and Promoting Independence
Public Health
Physiological Disorders
Working in the Social Care Sector
Working in the Health Sector- Promoting Health Education
Nutrition for Health and Social Care
Complementary Therapies for Health and Social Care

Careers pathways

A Full-time Further Education course designed for students who are interested in a career in the Health and Social Care industry such as nursing, medical services and Social Work.

Subject specific entry requirements

Grade 4 or above at GCSE in Maths and English

Student feedback:

“This is a great course that is so interesting and will help me with accessing a nursing course in the future”.

History

A Level



Course outline:

History at A Level is designed to offer students the chance to study a wide variety of periods and topics in English, European and American History. These modules offer the opportunity to study historical topics over a long period of time, in breadth and in depth.

Students will be gaining knowledge of the good and bad that humanity is capable of, an understanding of how the world we live in has developed, an ability to develop informed attitudes on current and previous events and issues, and the problems of others.

Topics

Unit 1 BRITISH HISTORY: Period study - England 1547–1603: Enquiry topic - Mid Tudor Crises 1547–1558

Unit 2 EUROPEAN AND WORLD STUDY: Democracy and Dictatorship in Germany, 1919-1963

Unit 3 THEMATIC STUDY:: Civil Rights in the USA 1865 – 1992. With additional depth studies of Malcolm X and Black Power, the New Deal, and late 19th century civil rights.

HISTORICAL INVESTIGATIONS: This will be an investigation from any period of history.

Assessment:

YEAR 1 Units 1 – 2
BRITISH PERIOD STUDY AND ENQUIRY: 25%
NON-BRITISH PERIOD STUDY: 15%
YEAR 2 Units 3 – 4
THEMATIC STUDY AND HISTORICAL INTERPRETATIONS: 40%
COURSEWORK/ PERSONAL STUDY: 20% of A Level

Careers pathways

A Qualification in History doesn't limit you to a career in just History. The skills that are developed and the knowledge learnt in this course are valuable qualifications for a wide range of occupations and careers. In an age when employers are often more interested in what grades you get as a mark of your ability and skills, rather than the specific subject you study, History offers routes into: Law, Journalism, Teaching, Publishing, Social work, Police, Civil Service, as well as many others.

Subject specific entry requirements

A Grade 5 or above, in GCSE History. However, the course welcomes those students who have not studied History in Key Stage 4, as the course builds on, but does not depend on, the knowledge, understanding and skills specified for GCSE History.

Student feedback:

"I'm really excited about going to study History at Southampton next year and this is down to the encouragement and support of my great teachers"

Geography

A Level



Course outline

A level geography is a course for students who have a keen interest in understanding how the our world works, physically and socially.

The course is similar to GCSE in that it is split between physical and human geography, with a separate independent project which is similar to the fieldwork carried out at GCSE level, but much more in-depth and much more independently.

The topics are selected to build on knowledge gained at GSCE, with newer topics to excite your curiosity and broaden your knowledge.

Analytical skills are hugely important to this course as the issues covered are complex and relevant to today's changing and challenging world.

Exams include 20 mark essay-style questions, as well as multiple data and resource analysing tasks, building robust written, numerical and research skills that employers really value.

Topics/Units

Physical Geography:

Hazards

Coastal Systems and Landscapes

Water and Carbon Cycles

Human

Changing Places

Global Systems and Global Governance

Contemporary Urban Environments

Independent Investigation (NEA):

Independent Fieldwork Project on a topic of your choice worth 20% of the A level

ASSESSMENT

40% = Paper 1—2 hrs— 120 marks

40% = Paper 2—2 hrs— 120 marks

**20% = Independent Project—
3000—4000 words—60 marks**

Careers pathways

As geography covers such a wide range of skills, the career possibilities are many and varied.

Careers can be science or social science focused in areas such as the sustainability, data analysis and IT, the environment, urban planning, international charities, education, and many more. Some examples jobs roles include

- Environmental consultant
- Climatologist
- Meteorologist
- Environmental Lawyer
- Town planner
- Travel journalist/photographer
- Diplomatic service officer
- Conservation officer
- Landscape architect
- Landscape architect

Student feedback:

"The content of the course is interesting and relevant—there is a lot of it to cover."

"I would recommend this subject to those who find geography interesting and who want to become better at understanding the world and other people."

Subject specific entry requirements

Students must achieve a grade 5 in GCSE Geography. Those who have not studies GCSE Geography may be considered, please speak to Head of Department.



Mathematics

A Level



Course outline:

A Level Mathematics is a two year course which will give you the opportunity to study Pure Mathematics, Mechanics and Statistics. Students who enjoy and successfully complete this subject typically progress onto a wide range of degree courses at university and now, more increasingly, higher level apprenticeships.

Topics:

Pure Maths: This includes topics such as Algebra & Functions, Exponentials & Logarithms and Vectors.

Applied Maths: This is split into Statistics and Mechanics.

Assessment:

The Pearson Edexcel Level 3 Advanced GCE in Mathematics consists of three externally-examined papers.

Each paper is a 2 hour written examination, out of 100 marks and worth 33% of the qualification.

Careers pathways

Mathematics A-Level is highly respected by all further education establishments and would be considered favourably as admission onto just about any degree course or higher level apprenticeship.

It is thought particularly desirable for courses and careers such as Maths, Accountancy, Law, Medicine, Sciences, Engineering, Economics and Computing, which a lots of our students have gone onto do.

Subject specific entry requirements

Minimum grade 6 in GCSE Maths, though grade 7 or above is preferred.

Student feedback:

“ Studying Maths A level has allowed me to go on to study mechanical engineering at university next year.”



Music

BTEC Level 3 National Extended
Certificate in Music Performance



Course outline

This qualification is equivalent in size to one A Level and aims to provide a coherent course of study covering both performance and the music industry.

This course is for practical musicians who are keen to perform. It provides an excellent opportunity for students to further their musical studies and experiences in a variety of ways with the support and guidance of a very experienced team of teachers.

Topics/Units

Equivalent in size to one A Level. Four units, of which three are mandatory and two are external. Mandatory content (83%). External assessment (58%)

Mandatory Units:

Practical Music Theory and Harmony

Professional Practice in the Music Industry

Ensemble Music Performance

Specialist Unit:
Solo Performance

Assessment:

Coursework and externally assessed performance.

Careers pathways

This BTEC Level 3 in Music can lead to further study in music or performing arts in Higher Education at degree or HND level and may lead on to a career in the music industry.

Our students have gone on to study subjects such as song writing, music production and music studies.

Student feedback:

"I was given the chance to explore and develop my music with the encouragement of my amazing teachers."

Dani Cave 2019

Subject specific entry requirements

Grade 5 or above at GCSE / Level 2 BTEC Music Merit or above

Grade V in instrumental / vocal studies if GCSE/BTEC Music not studied.





Philosophy and Ethics is an excellent preparation for a wide range of university courses in the arts, humanities and sciences. It develops the skills to analyse and assess arguments, and to reflect on and discuss fundamental issues. The application of philosophical ideas to practical moral issues is especially relevant for those considering careers in law, medicine, or the media. Every day we consider ethical choices and wonder about philosophical issues. This course will change the way you see the world!

Topics:

A wide ranging topics from:
Arguments for the existence of God. Criticisms of these;
Ethical theories. How do Natural Moral Law, Situation Ethics and Virtue Ethics help us decide about lying and stealing?; Religion and science – Buddhism meets quantum physics!
Secularisation and pluralism.

Component 1: Philosophy and Ethics (67%)

Component 2: Buddhism
(33%)

Assessment:

100% examination in Year 13
Three papers:

- A. Philosophy of Religion
- B. Ethics
- C. Buddhism, Dialogues with Philosophy and Ethics.

Careers pathways:

- The Philosophy & Ethics A level opens opportunities for students to study this subject at a higher level, usually degree.
- Some of our students have used this A level to gain access to courses such as Religious Studies, Philosophy, Travel and tourism, Health and Social care, Childcare, Teaching, Uniformed public services and Legal studies.

Subject specific entry requirements

Grade 5 or above in RS GCSE and Grade 5 or above in English GCSE

Student feedback:

“Philosophy & Ethics is a really interesting course which explore topics which challenged me and really provoked my thinking”



Photography

A Level



Course outline:

Students will have the opportunities to study each of the following through the two year course:

Digital Manipulation, Studio Lighting & Effects, Technical Camera Skills, Digital Research and Mixed Media Techniques

Students are encouraged to explore, experiment and develop a wide range of photography techniques and combine these with art media through the research and investigations of contemporary photographic artists.

Regular visits to museums and art galleries along side practical workshops help support our students' development and understanding of the subject throughout the two years.

Subject specific entry requirements

Grade 5 or above at GCSE in Art & Design, Design Technology and/or Creative Media.

Grade 4 or above in English Language.

Topics/Units:

Coursework—60%

Practical Portfolio

Candidates produce a portfolio of work from a starting point, topic or theme of their own choice. The focus is on including work that shows exploration, research and acquisition of techniques and skills. This portfolio includes a written Related Study that extend the student's practical portfolio of work and shows a historical and contextual understanding.

Controlled Assignment—40%

Candidates select one starting point from the examination paper issued in February. Prior to the 15 hour practical examination, students are given the opportunity to plan and develop a sketchbook of preparatory studies to support the development of their final piece.

Careers pathways

This is an A level so enables students to access foundation and degree courses as well as higher level BTEC qualifications and college diplomas.

Previous students have gone on to study courses in Photography, Creative Media, Film, Theatre Studies, Animation, Digital Illustration, etc at all levels.

Photography A-level opens doorways into numerous creative careers; Photographer, Fashion Photography, Web Design, Animation, Film & Media, Special Effects, Theatrical Set & Lighting, Advertising, Illustration, etc.

Student feedback:

"I've really enjoyed learning how to use my camera correctly and the projects have allowed me to be creative which I've loved."

Physics

A Level



Course outline:

Physics is crucial to understanding the world around us, the world inside us, and the world beyond us. It is the most basic and fundamental science.

Physics encompasses the study of the universe from the largest galaxies to the smallest subatomic particles. Moreover, it's the basis of many other sciences, including chemistry, oceanography, seismology, and astronomy (and can be applied to biology or medical science).

Topics:

- Development of practical skills in physics
- Fundamental data analysis
- Physics in action
- Understanding processes
- Rise and fall of the clockwork universe
- Field and particle physics

Assessment:

100% examination

Three exam papers:

1: Fundamentals of physics

2 hours 15 minutes written paper

2: Scientific literacy in physics

2 hours 15 minutes written paper

3: Practical skills in physics

1 hour 30 minutes written paper

Plus a Practical endorsement grade.

Careers pathways

You can find physicists in industrial and government labs, on college campuses, in the astronaut corps, and consulting on TV shows. In addition, many physics grads work at newspapers and magazines and in government. Physicists are problem solvers. Their analytical skills make physicists versatile and adaptable so they work in interesting places. The world is your mollusc!

Melksham Oak studies have used their Physics A Level to study mechanical, aeronautical and electrical engineering and architecture at degree level.

Subject specific entry requirements

Minimum grade 6 in science at GCSE. Grade score average which indicates a predicted grade 5 or above. Minimum 5 grade in GCSE Maths.

Student feedback:

"A level Physics is so fascinating and applies to everything around us, I love it!"



Design Technology: Product Design A Level



Course outline:

This course builds on the experience of your Design Technology GCSE and allows you to further your studies through Product Design. You will choose either a Graphics based or a Resistant Materials pathway; we have students who aren't specialists in these who do very well in either of these. You will have the opportunity to study, propose and realise prototype solutions to designing and making opportunities closely linked to the real world of product manufacture. We have excellent facilities with students being able to access multi discipline workshops and superb CAD/CAM machinery such as a 3D printer and laser cutter.

Topics:

- Materials
- Performance characteristics of materials
- Processes and techniques
- Digital technologies
- Factors influencing the development of products
- Effects of technological developments
- Potential hazards and risk assessment
- Features of manufacturing industries
- Designing for maintenance and the cleaner environment
- Current legislation
- Information handling, Modelling and forward planning
- Further processes and techniques.

Independent Design and make Project.

Assessment:

Examination: 50% & Project with a real client: 50%

Careers pathways

Design & Technology is a good A-level, or can be called upon for more specialised purposes depending upon the needs of the candidate. Many of our students have gone onto university to study Product Design or Industrial Design as well as going into Engineering, Architecture, Game Design and Graphic Design.

Other students have gone onto apprenticeships with the MOD, creative design companies and advertising agencies.

Subject specific entry requirements

Grade 5 or above at GCSE Product Design.

Grade 4 or above for Maths and English.

Student feedback:

"My Product Design A level helped me develop a big range of skills and subject knowledge which will help me on my Engineering degree in Plymouth"



Psychology

A Level



Course outline:

Psychology is the Science of Behaviour and Experience. Psychologists observe behaviour, formulate a theory and then carry out experiments to test the validity of that theory.

This will be a new subject for all students which will provide a highly fascinating and detailed study of this complex subject.

This is consistently the most successful A level course we provide and there are very high expectations placed on the students for their commitment and focus.

Topics:

Year 1:

Introductory Topics in Psychology- Social Influence, Memory, Attachment, Psychology in Context- Approaches in Psychology, Psychopathology, Research Methods.

Year 2: Social Influence, Memory, Attachment and Psychopathology, Approaches in Psychology, Research Methods, Biopsychology (Biology Section), Issues and Debates in Psychology, Relationships, Schizophrenia, Aggression

Assessment:

100% examination in Year 13. Year 12 students will complete an internal exam to pass into the second year.

Careers pathways

A-level Psychology is of use in many areas of employment. It is a requirement for anyone wishing to become an Educational Psychologist or Criminal Psychologist.

Students from MOCS have also used this A level to gain places on courses such as marketing, journalism, sports coaching, social work, teaching, public relations and nursing.

Subject specific entry requirements

At least five and usually more, Grade 5 and above passes, in any subjects at GCSE. This would also mean that an average point score of 5 (from the top 8 GCSE passes). The student must also have a Grade 7 in English Language or English Literature, in Mathematics and in Biology at GCSE.

Student feedback:

"a brilliant course which really fascinated me, so I'm now off to university to do a degree in Psychology... can't wait!"



Sociology

A Level



Course outline:

WHAT IS SOCIOLOGY?

It is about you as a person and your role in society. The aims of the course are to make the student much more aware of the effects of being part of Society from "the cradle to the grave."

This will be a new subject to all students but this popular course offers a great insight into the workings of different societies and all the key elements that make up our complex and intriguing world. The course examines social behaviour from a variety of perspectives: how it originates and then develops, and the ways people are organised into groups according to distinctions such as class, gender and race.

Subject specific entry requirements

At least five Grade '4' or above passes, in any subjects at GCSE. The student must also have a Grade 5 in English Language.

Topics:

Education with Theory and Methods.
The Mass media and Families and Households.
Crime and Deviance with Theory and Methods
Other option topics include:
Culture and Identity
Families and Household
Health
Work, Poverty and Welfare
Beliefs in Society
Global Development
The Media
Stratification and Differentiation
Assessments

Assessment:

100% examination at the end of Year 13. Three exam papers based on the topics above, each paper is worth 33.3% and is two hours long.

Careers pathways

An increasing number of companies like to employ Sociologists in their Public Relations Departments. A-level Sociology is often a requirement for some careers in the Health Service, Police Force, Nursing and is very useful in Public Relations, Marketing, Education and Law.

Student feedback:

"a really enjoyable course which has been made even better with some great teachers"



Spanish

A Level



Course outline:

As well as developing their speaking, listening, reading and writing skills, students will have the opportunity to study aspects of the culture and life of the country through topics such as: the changing nature of the family, the cyber family, the role of voluntary work in society. Students also study Cinema, Music and Art. Students also have to read a novel. New skills will be introduced such as translating from and into the foreign language and using the foreign language to argue a case and present viewpoints in both speaking and writing. In addition, students will study a written text such as a novel in the target language and students will study a film.

Subject specific entry requirements

A Grade 5 or above at GCSE in Spanish, although consideration will be given to committed students who achieved a grade 4.

Topics:

- culture and life in Spain
- the changing nature of the family,
- the cyber family,
- the role of voluntary work in society
- Spanish literature
- Spanish cinema, Music and Art

Assessment:

There are 2 core themes in the A level specification:

Social Issues and trends

Political and artistic culture

In addition you will have to study either two texts or a text and a film.

Texts or text and film will be assessed in paper 2.

Paper 1: Listening, reading and writing

Paper 2: Writing

Paper 3: Speaking

Careers pathways

It is becoming more and more desirable for people intending to work in a wide range of careers to have fluency in one or more foreign language. According to a recent study, many employers will pay between 8-20% more salary for employees who use languages at work.

Our students have gone on to study Spanish at university and also gone onto courses where Spanish has been the second subject such as International Business management with Spanish.

Student feedback:

"Studying Spanish has been great and I hope to use it with my Law degree when I qualify".



Sport & Physical Activity

Level 3 Cambridge Technical

Level 3 Extended Certificate (Single A-Level) or Extended Diploma (Triple A-level equivalent) depending on uptake.

Course outline:

The Cambridge Technical in sport have been developed to meet the changing needs of the sector, and to prepare students for the challenges they'll face in higher education, an apprenticeship or employment. They have been designed in collaboration with experts spanning the breadth of the sector and they focus on the skills, knowledge and understanding that today's universities and employers demand.

The course is structured so there is mix of theory, coursework and practical sessions all of which are assessed as the students progress.

Topics/Units:

Some of the units include:

1. Body systems and the effects of physical activity (exam)
 2. Sports coaching and activity leadership (coursework and practical assessment)
 3. Sports organisation and development (exam)
 4. Sports injuries (coursework)
- Practical skills in sport and physical activities (practical assessment)

Assessment:

The 360 guided learning hours course will cover a range of topics and areas through a combination of both internally and externally assessed units.

Careers pathways

Students from MOCS who have done the single award have gone on to study Sports at a higher level either at university or college. Those students are looking to pursue careers in the following:

Teaching
Fitness Instructor
Personal Trainer
Sports Therapist
Sports Coach

While others have gone on to apprenticeships with sports providers both locally and nationally.

Subject specific entry requirements

At least a level 2 Pass in BTEC Sport or a 4 in GCSE PE.

Student feedback:

"this course has allowed me to follow my dream of working in the sports industry and the level of support I've had has been great"



Textiles

A Level



Course outline:

A superb course that consists of design and make textile projects. This course provides opportunities for students to undertake projects that include fashion design, printed and/or dyed fabrics, constructed Textile Design, installed Textile Design. Students will have a sketch-book and textile product/garment for each project. All students will have access to a wide range of resources and equipment with the support of an experienced team of teachers and technicians to support.

Topics/units:

- Fashion
- Pattern making
- Printed/dyed fabrics
- Textile construction
- Construction textile design

Personal investigation unit:

The Personal Investigation consists of a major, in-depth, practical, critical and theoretical investigative project/theme-based portfolio and outcome/s with integrated extended written critical and contextual analysis.

Assessment:

15 hour control assessed
Project based with external moderation 100%

Careers pathways

Our students progress to a Foundation Course in the Art & Design or university to study Textile design or fashion design.

Textiles works very well with all A Level subjects; in particular Art & Design; English (Fashion Journalism) and Business Studies.

Subject specific entry requirements

Grade 5 or above at GCSE Product Design, Textiles or Art
Grade 4 or above for Maths and English.

Student feedback:

“By doing Textiles A level I’ve been able to explore lots of different techniques and processes. It’s been quite challenging at times but I’ve loved making my designs”



Performing Arts

BTEC. This will be an alternative to the Drama A Level depending on the uptake and cohort of students' needs.



Course outline:

This is a BTEC Level 3 National Extended Certificate in Performing Arts. Each student may select a dance / physical theatre or acting focus during this two year course.

This course offers an excellent development of performance skills as well as a breadth of subject specific knowledge from within the performing arts sector. It is a 360 Guided Learning Hours course and equivalent in size to one A Level.

Topics/units:

Investigating practitioners work: You will be required to reflect on workshops and research practitioners such as choreographers and or practitioners in order to develop ideas and justifications as to how you might approach the brief released in any of the performance skill areas (Dance or Physical theatre) making reference to two practitioners within that skill.

Developing Skills and Techniques for Live Performance; Students will be required to develop work over time which is an interpretation of an existing set of two dance works / Physical theatre / acting performance.

Jazz Dance Technique (or other practical unit dependent on the class): Learners techniques with an emphasis on practical development, application and performance skills.

Group Performance Workshop

This unit is a group task and will be assessed individually on the contributions made and skills developed. Learners explore and integrate creative, dance skills / acting skills and techniques, working collaboratively to create a performance in response to a given stimulus.

Careers pathways

Achievement of this qualification can support progression to go on and study in a Higher Education institution either on relevant Drama degrees, drama schools and guild qualifications.

In addition consider:

Post-18 Drama & Theatre studies courses, BA Drama and Theatre courses, Theatre company apprenticeships, Acting courses, Stage & Set Design, Theatrical Make-Up & Costume, Teaching, social work, community projects, early years, marketing, management qualification and leadership courses.

Subject specific entry requirements

9 – 4 in GCSE Drama / Dance or BTEC L2 Merit or + Outside equivalent of dance exams.

Student feedback:

“this is an exciting and challenging course that has helped me develop my confidence and a whole range of new skills which have helped me achieve my goal of going to drama school.”