



Y1 T6 Geography: Why do different animals live in different parts of the world?



World Map



continent

A very large area of land that includes all the islands with it.

ocean

A large area of sea.

Continents

There are seven **continents**: Africa, Antarctica, Asia, **Australasia**, Europe, North America and South America. Some **continents** have many countries, others do not.

World Oceans

There are five **oceans** in the world: the Arctic Ocean, the Atlantic Ocean, the Indian Ocean, the Pacific Ocean and the Southern Ocean.

desert

A large area of land that has very little rainfall and where not much grows.

rainforest

A large area of land with lots of tall trees and plenty of rainfall.

climate

The usual weather conditions of an area.

equator

An imaginary line drawn around the middle of Earth, dividing it into the Northern and Southern Hemispheres.

tropical

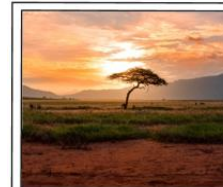
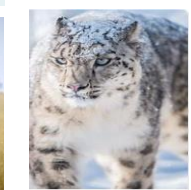
Hot and humid.

temperate

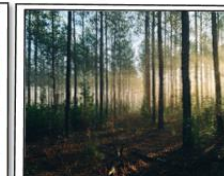
Mild weather. Neither very hot nor very cold.

Aquatic

The aquatic biome is the largest type - it covers over 70% of Earth! This biome can be further divided into two main types: freshwater and saltwater.



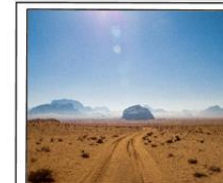
1. Savanna



3. Temperate Forest



5. Taiga Forest



2. Desert



4. Rainforest



6. Tundra