

# Parts of a Plant

twinkl

# Aim

- To be able to identify and describe the structure of different common flowering plants.

# Success Criteria

- I know the names of different flowers, wild and garden plants.
- I can observe closely parts of plants and use the correct words when I talk about what I have found out.
- I can complete diagrams showing parts of plants.
- I can compare and contrast familiar plants and talk about what I have found out I use the right vocabulary.
- I can record how plants change over time.

# Roots

Plants have different parts to them, just like you. We have different body parts such as arms, legs and a mouth.

A plant has different parts too and they all do different jobs.

The roots of a plant anchors the plant in the ground and without roots a plant would fall over.

Roots are also take in nutrients and water from the soil.

**Can you see the roots on this plant?**



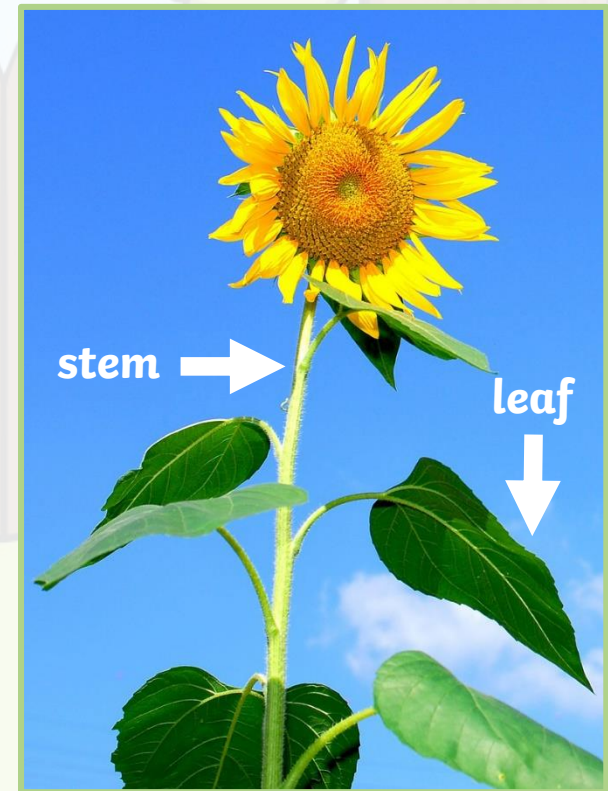
# Stems and Leaves

Stems help support the plant and keep it upright. Water and food are taken up from the roots and transported through the stem.

Leaves are very important as they make food for the plants. Leaves are made to catch the sunlight as plants need sunlight to make food. This process is called **photosynthesis**.

Leaves come in all sizes and shapes. They have openings to allow carbon dioxide to enter. Leaves are usually green but some leaves are different colours.

**Look for the stems and leaves on the plant.**



# Flowers

Flowers look pretty and come in lots of different colours. They can also smell lovely.

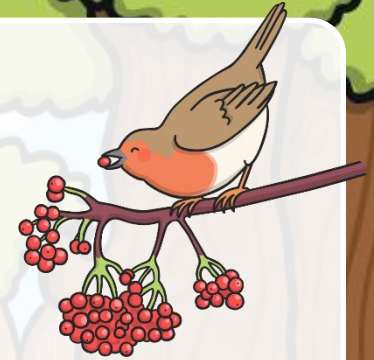
These colours and smells are important because they attract bees birds and butterflies which **pollinate** the plant.

The plant will then produce seeds or fruit.

**Point to the flowers.**

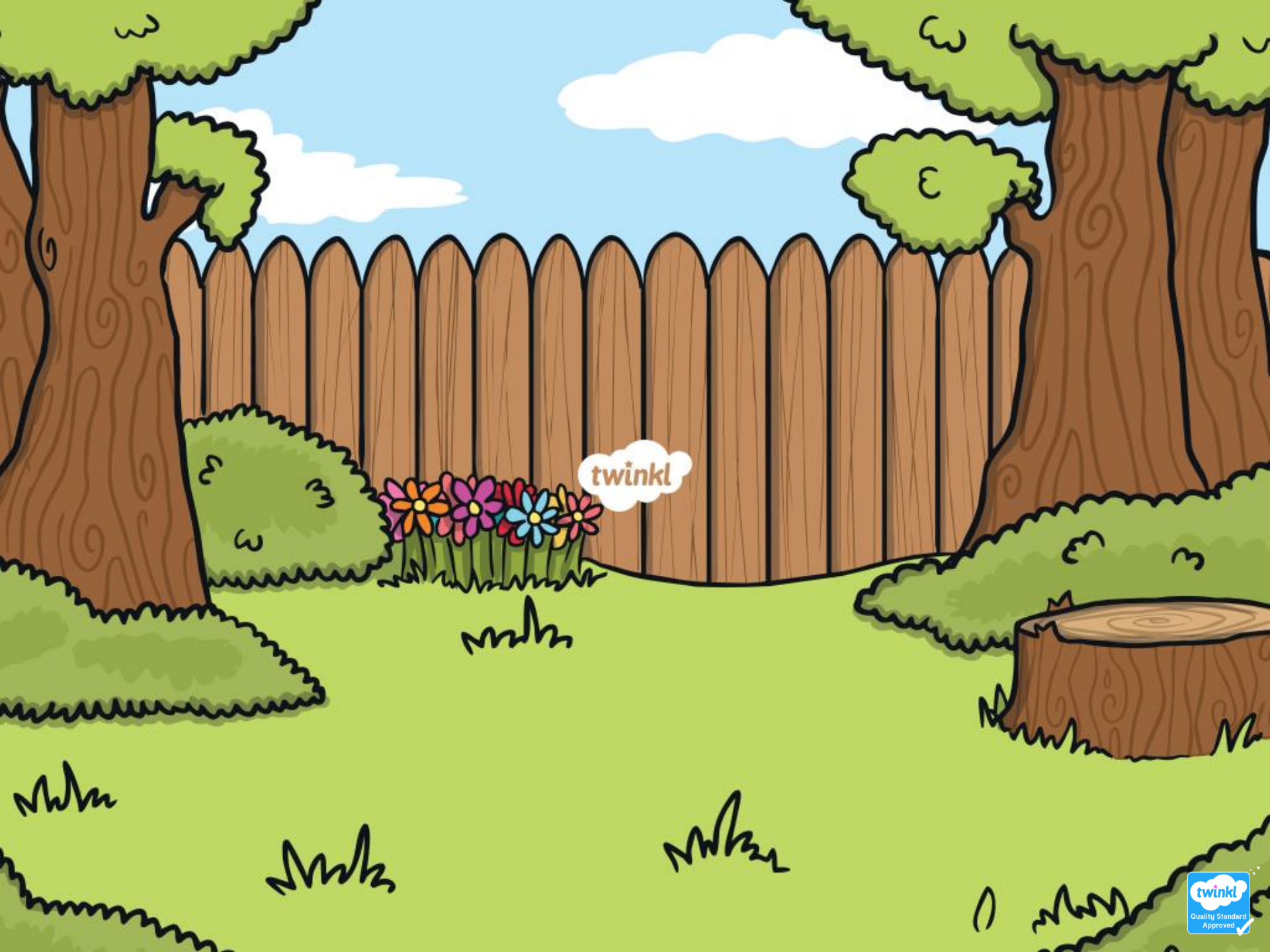


# Plenary



1. Flowers are usually bright and -----.  
They can also smell lovely.
2. Colours and smells are important because they attract ----- and -----.
3. Leaves are important because they make ----- for the plant.
4. Plants need ----- to make food.
5. Leaves come in all ----- and sizes.
6. The ----- of a plant grow underground.
7. ----- bring food and water from the soil.





twinkl