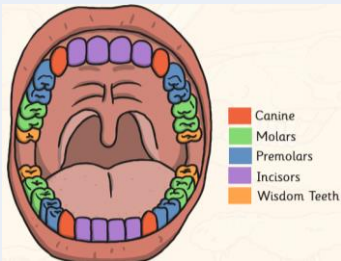


Teeth	
<b>Incisor</b>	<i>Where:</i> At the front of the mouth <i>Function:</i> to bite food
<b>Canine</b>	<i>Where:</i> Near the front of the mouth <i>Function:</i> To rip and tear food
<b>Premolars</b>	<i>Where:</i> towards the back of the mouth <i>Function:</i> to hold food
<b>Molars</b>	<i>Where:</i> at the back of the mouth <i>Function:</i> the chew and grind the food
<b>Wisdom teeth</b>	<i>Where:</i> at the back (not everyone has them) <i>Function:</i> no use anymore



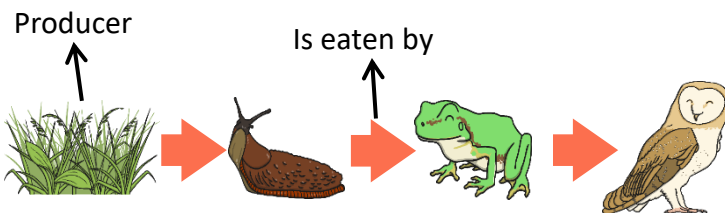
### Keeping a healthy mouth

<b>Tooth decay</b>	Damage to a tooth caused by plaque turning sugars into acid
--------------------	---

**You can keep your mouth healthy by:**

- Brushing your teeth twice a day
- Visiting the dentist regularly
- Consuming less sugary food or drinks

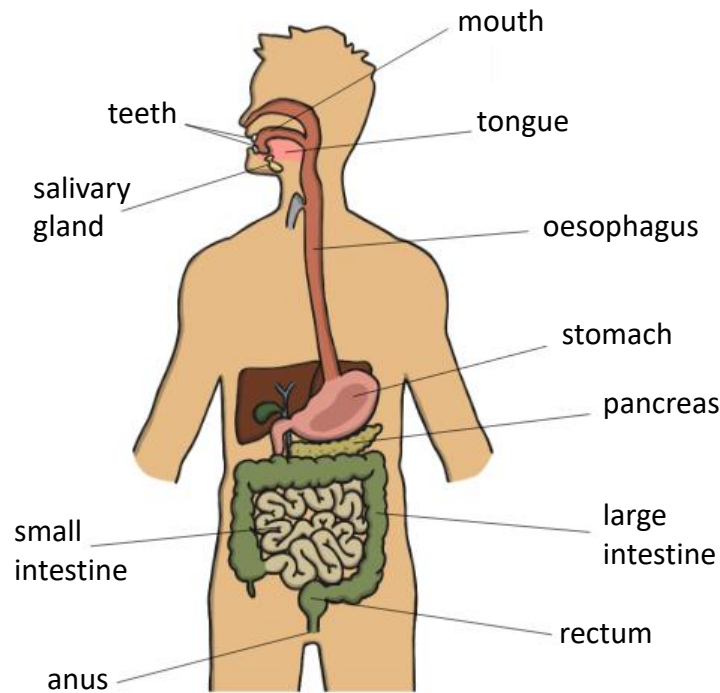
### Food chains



# Year 4 – Animals including humans

## Functions of the digestive system

1. Mouth – entry point for food where saliva mixes together. Location of tongue and teeth.
2. Oesophagus – muscles contract and relax to move food to the stomach.
3. Stomach – muscles in the stomach mix the food
4. Small intestine – absorbs nutrients and passes any leftover broken down food to the large intestine
5. Large intestine – connects the small intestine to the rectum. Absorbs water from the waste food. Forms stools from waste food.
6. Rectum – Stores stool passed to it from the large intestine. Makes brain aware of need to go to the toilet
7. Anus – releases the stool. End of digestive process.



Vocabulary Dozen (14)	
<b>food chain</b>	A series of living things which are linked to each other because each thing feeds on the one next to it
<b>producer</b>	Plants are called producers because they make their own food
<b>predator</b>	An animal that kills and eats other animals
<b>prey</b>	An animal hunted or captured by another for food
<b>incisor</b>	The teeth at the front of the mouth which you use for biting into food
<b>canines</b>	The pointed teeth near the front of the mouth
<b>premolars</b>	Situated before a molar tooth
<b>molars</b>	The large, flat teeth at the back of the mouth that are used for chewing food
<b>carnivores</b>	An animal that eats meat
<b>herbivores</b>	An animal that only eats plants
<b>oesophagus</b>	The part of your body that carries the food from the throat to the stomach
<b>stomach</b>	The organ inside your body where food is digested
<b>intestines</b>	The tubes in your body through which food passes when it has left your stomach
<b>digest</b>	When food passes through your body