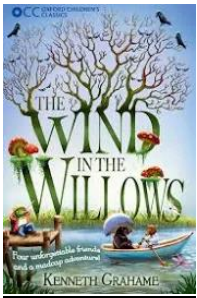


Year 5 Newsletter

Middleton Parish Church School

English Reading

This half term, we are going to be reading the classic *Wind in the Willows*, by Kenneth Grahame.



Writing

In writing, we will be using the story of *Wind in The Willows* to write a setting description and a character description of one of the main characters.

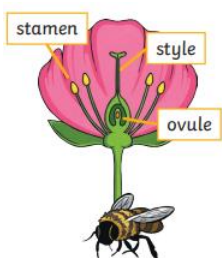
Outdoor Shoes

To ensure all children can engage fully in our playtime provision, we ask that old, sturdy trainers and a pair of football/walking/thick socks are brought into school in a plastic bag. These shoes will be used for Forest School and field games such as football. Ideally, we ask that these are left in school Mon-Fri.



Science

Our science topic this term is *Living Things and Their Habitats*. The children will be able to describe animal life cycles and they will learn about plant reproduction.



Reading

Class Novel

This half term we will be reading *Wind in the Willows*. The tale tells the adventures of several animal friends and neighbours in the English countryside—primarily Mole, Rat, Toad, and Badger.

Reading Books and GORead!

Children will continue to select books from our class library, with the guidance of the teaching team. This book, along with their vocabulary book, should come into school and back home each day to maximise reading opportunities.

Should children have a home reading book they would like to read, please send it into school for teachers to check it provides enough challenge to support progression in reading – teachers will then add this book to GORead.

Adults in school will read with all children at least once a week. We ask that children read at home daily.

All reading should be recorded on GORead in order for children to earn maximum gems! Problem words/new vocabulary can be added on go read alongside in vocabulary books.



Contacting Us

If you need to talk to Mrs Blackburn or Miss Charlesworth please do not hesitate to send us an email.

Our class email address is y5@middletonparishce.rochdale.sch.uk

As we teach full time, it may take up to 5 days for us to reply. If you need to pass on a message in an emergency, please contact the school office.

If you need to update contact details, allergy/medical information etc you can email the school office.

The school office email is office@middletonparishce.rochdale.sch.uk

Sometimes families need a little extra support with things such as housing, employment, emotional well-being and parenting. Our Engagement and Inclusion team are here to help, including signposting families to services outside of school. Should you need it the team's email is

EandI@middletonparishce.rochdale.sch.uk

Summer 1 2022

Geography

This term we will be exploring the question, 'what is geographical fieldwork?' Children will gain a good understanding of the geography enquiry cycle and will have opportunities to collect, present and analyse data based on our school grounds.

This is to prepare them for Year 6 geography outside the school grounds.

P.E and Forest School

P.E and Forest School are remaining on a Tuesday for Year 5. The children who were swimming last half term will be going swimming; those not swimming will partake in invasion games at school. Please ensure your child has the correct PE kit.

PSHE

Our Heart Smart topic is 'Fake is a Mistake!' In this topic we are thinking about the images portrayed on social media and how these compare to real life.



Religious Education

In R.E. we are looking at Pentecost and what happened next. Children will gain greater understanding of the lives and resilience of the early Christians, understand the significance of the life of St Paul and the concept of mission, and learn basic facts about how Christianity came to Britain.



Maths

In maths this term we are looking at adding, subtracting and multiplying decimals.

We are continuing to practise our times tables and your support with this at home is very important.

