

**If you need to drive
your child to school:**

**For the safety of your
child, their friends, and
the local community we
ask that you park safely,
legally and considerately
around schools.**



This information is available on the internet at www.swindon.gov.uk. It can be produced in a range of languages and formats (such as large print, Braille or other accessible formats) by contacting the Customer Services Department.

E-mail: customerservices@swindon.gov.uk

D3093 FOI4265/22



**When children are walking or
cycling to school, we know that
parents are concerned about
the danger from traffic. School
gates should be safe places.**

 **SWINDON**
BOROUGH COUNCIL

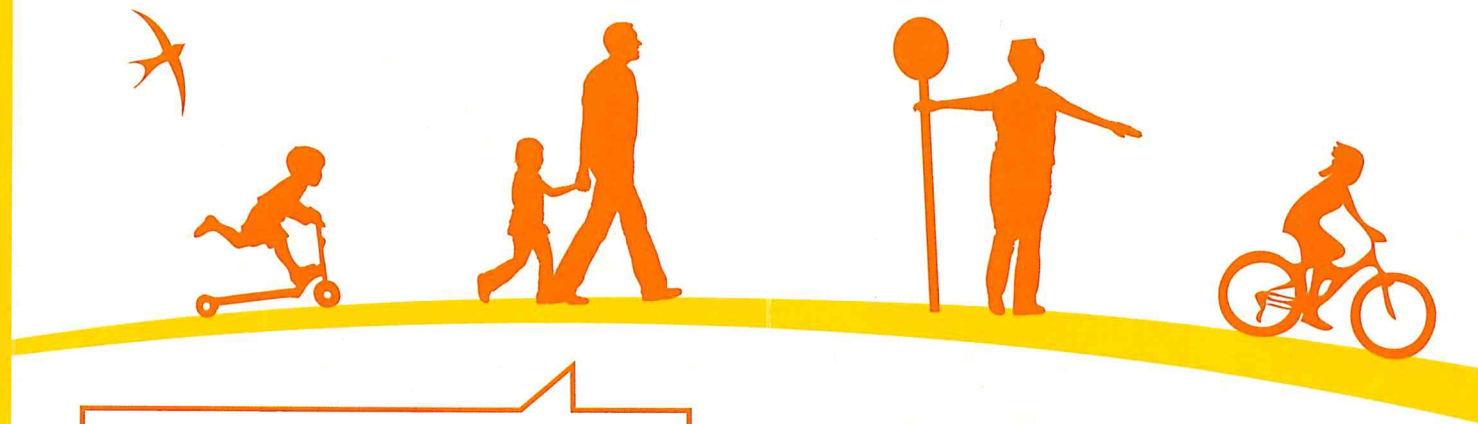
Help us make the journey better for everyone. This means:

- ❌ **Not parking or driving on the pavement.** Children are taught that the pavement is a safe place to be. Blocking the pavement, even if only half on, makes it difficult for those who do want to walk, especially for parents with pushchairs or wheelchairs.
- ❌ **Not parking on corners or within 10 metres of a junction.** This will prevent drivers, cyclists and pedestrians good visibility of approaching traffic.
- ❌ **Not parking on School Keep Clear yellow zigzags, single or double yellow lines.** These restrictions are placed to keep the road safe for everyone.
- ❌ **Not stopping or dropping off on pedestrian crossing white zigzags.** They are there to allow people to cross the road safely.
- ❌ **Not blocking dropped kerbs.** You are depriving people with pushchairs and wheelchairs of an accessible place to cross the road.
- ❌ **Not parking on grass verges.** This causes unsightly damage which can be costly to repair. Verges are usually legally included as part of the highway, so any parking restrictions on the road apply here too.
- ❌ **Not parking where you cause inconvenience to others.** This includes double parking, blocking residents' driveways and parking right outside someone's window.

What can I do instead?

Walking or cycling to school benefits everyone.

- Our children (and parents/carers!) get regular exercise, and learn vital road safety and independent travel skills.
- Our local communities are not inconvenienced by lots of cars at peak times, and the air we breathe outside the school gates is cleaner.
- It is cheaper than driving.
- Cars and schools do not mix well. Children are often distracted when approaching or leaving school and this is when things can go badly wrong.



Always park so that children can get in or out on the kerb side of the car and not into the path of traffic. Teach them to be aware of other road users, including pedestrians and cyclists before opening the doors.

However, we recognise it is not always possible for families to walk or cycle all the way to school.

Try 'Park and Stride' - park away from the school entrance and walk the last 5 or 10 minutes. (Your school may already have a '5 minute walk zone' marked out.) This disperses the cars and reduces the number in any one place to a safer level. Walking half a mile only takes between 8 and 15 minutes. How many calories you burn depends on how fast you walk!

Try car-sharing - if you have to drive to school then get together with other parents who need to go by car and take it in turns to drive.

For further information regarding behavioural change, initiatives please see the Council's School Safe Environment Zone (SSEZ) web pages: www.swindon.gov.uk/SSEZ

In addition, you can find more information on the Swindon Travel Choices web page: www.swindontravelchoices.co.uk