



Headteacher: Mr R Stead
Tel: 01823 400439
Pre-School Tel: 01823 400243
office@milvertonprimary.co.uk
www.milvertonprimary.co.uk

Opening Hours
School - 8.45am - 3.15pm
Office - 8.30am - 4pm
Morning club - 8am
Clubs 3.15pm - 4.30pm
Toasties 3.15pm - 4.30/5.45pm
Pre-School: 8am - 4.30pm

FRIDAY FLYER

Newsletter No. 17
7th February 2020

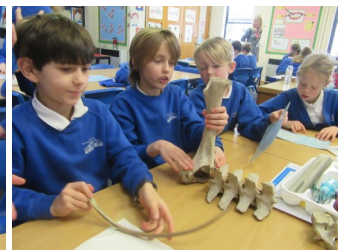
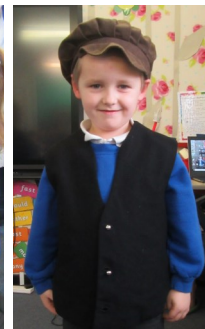
Dear Parents and Carers,
Parents often say that, although they value the internet, and their children love it, they are worried by it. Next Tuesday is Safer Internet Day in the UK and we will be celebrating this in school with an assembly and class-based activities. The link below is to the Safer Internet website where you will find videos giving advice to support you in being open and trusting with your children and encouraging good habits and good relationships. We hope that you find the information useful. <https://www.saferinternet.org.uk/safer-internet-day/safer-internet-day-2020/i-am-parent-or-carer/film-how-can-parents-talk-children>

Mr R Stead



On Monday, Class 1 and 2 were visited by Sam from Taunton Museum for a 90 minute workshop on old toys and games to link in with this terms quest 'Times Gone By'. The children were shown real toys and games from long ago and as far back as the Victorian times. One teddy we were shown was over 100 years old. They looked at the different materials toys were made from and compared them to toys of today. The workshop allowed the children to explore the toys and games and dress up in clothes children would have worn to school. They also found out about early moving pictures using a 'zoetrope' and made their own 'thaumatrope'. It was a fantastic workshop where the children were fully immersed in play.

Mrs McDonagh



On Tuesday, Class 3 and 4 took part in a fun Teeth and Bones workshop. We had a lady called Sam teach us and we learnt lots of interesting facts. She taught us the three reasons why we have a skeleton and drew a picture to help us remember. We have a skeleton for movement, support and protection. The best facts that I remember are; rabbits do not have bones in their ears, a child (0-25years) has 300 bones in their body and when you become an adult you only have 206 bones. My favourite part of the workshop was looking at the inside of my body. We wore a special t-shirt and you could scan the code on the t-shirt to see the inside of your body. You could see organs, bones and blood flowing inside of you. It was gruesome but so much fun!

by Mathilda, Class 4

Diary Dates

From Wednesday 12th February there will be work taking place on the school grounds. Please be mindful that we will have contractors on site.

Friday 14th February
MSA Valentine's Cake Sale after school. 50p per cake.

Monday 17th to Friday 21st February
Half Term Break

Tuesday 25th February
Class 3 & 4 visit from Somerset Archive

Parents' Evenings
Tuesday 25th February
All Years
5pm to 7.30pm
Year 1 3.30pm to 7.30pm

Wednesday 26th February
All Years except Year 1
3.30pm to 6pm
NO FOOTBALL CLUB

Parents' evening appointments online booking on Parentmail will be open from Tuesday 11th February at 6pm.

Thursday 27th February
Class 1 & 2 visit from West Somerset Railway Heritage

Tuesday 3rd March
Class R visit to Pizza Express

Wednesday 4th March
Class 3 Kingsmead Sports Festival

Thursday 5th March
Class R and 6 Heights and Weights

FOREST SCHOOL
WEDS 12TH FEB
CLASS 1

House Points	Weekly Total	Half Term
London Plane	334	1440
Cork Oak	355	1465
Blue Cedar	264	1314
Horse Chestnut	263	1361

OUTSTANDING LEARNERS OF THE WEEK

Pre-school	<i>Richard</i> for his brilliant knowledge of the world!
Class R	<i>Cas</i> for always trying his best and making great progress with his reading.
Class 1	<i>Bentley</i> for his constant hard work and effort in class. <i>Willow</i> for always trying her best.
Class 2	<i>Elliott</i> for working really hard on his handwriting, making it neat, joined and with good spacing between words. Keep it up, Elliott!
Class 3	<i>George</i> for working hard at improving his handwriting—well done!
Class 4	<i>Mathilda, Dexter</i> and <i>Yazmin</i> for great focus and engagement. I have been really impressed with the questions that you have asked and the responses you have shared, especially in Science. Well done.
Class 5	<i>Charlie</i> for working hard and being really focussed. Well done.
Class 6	<i>Katya</i> for her fantastic Maths work.



Class 2 were Forest School detectives! On a lovely sunny morning, we explored and hunted for signs of Spring. Being wonderful detectives, we found lots of welcoming signs of Spring including daffodil spikes emerging from the ground and some buds on the trees. We used our detective skills to identify the trees based on their buds.



Having realised it was Spring, we decided to help the birds by making feeders.

We obviously had to toast marshmallows!



SEND SPACE



Drop in group for parents/carers with Special Educational Needs and/or Disabilities.

Wellington Youth Centre
Every 2nd Wednesday of the Month
1-2.30pm



For parents/carers of SEND children diagnosed or undiagnosed, all will be welcomed (including children), a safe and informal space to share experiences, strategies, knowledge, resources and an opportunity to be in an understanding environment.

Activities for children and refreshments for all. Monthly meeting which can increase with demand

Cost £2 per Adult to cover operational costs.

Run By experienced Parents/Professional and supported by courtfields Pre-school.



**Friday 14th February
MSA cake and Popcorn sale
after school**

**Everything
50p!**



Celebrate Valentine's Day and the last day of school!

MILVERTON PARISH COUNCIL VACANCIES

Milverton Parish Council currently has two vacancies which will be filled by co-option. We would be delighted to hear from anyone who would be interested in participating in this interesting and varied aspect of village life. For details and an informal discussion please call the Chair of the Council, Ian Ainsworth-Smith on 01823 400365 or the Clerk, Clare Winter on 01823 972529. Candidates must be a citizen of the UK or Ireland; at least 18 years old; an elector in the Parish; or an owner of land in the Parish; live within three miles of the Parish; or work mainly in the Parish.