

# Y7 Papers & Boards- Cubee Knowledge Organiser

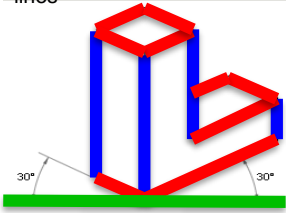
## Tier Three Vocabulary

Net  
Component  
Isometric  
Typography  
Perspective  
Tabs  
Net  
Cube  
Cuboid  
Design  
Vanishing point  
Specification  
Evaluation

## Isometric Projection

A isometric projection is made up of a series of parallel vertical lines and parallel 30 degree lines.

There are no horizontal lines



## Knowledge

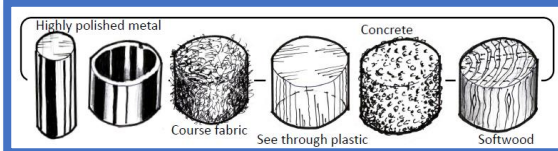
Know how to analyse and develop ideas from existing designs  
Know how to write and develop a specification  
Know how to evaluate their work

## Skills

To be able to select the correct tools and equipment  
Using tools safely and accurately  
To be able to spot hazards  
Awareness of safety procedures  
Accurate measuring and marking skills  
Develop and improve your own work  
Work effectively as an individual

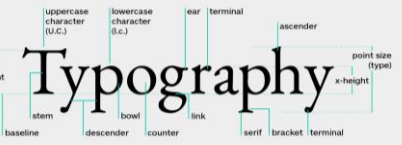
## Perspective Drawing

Perspective drawing is a technique to create the linear illusion of depth.  
Key terminology:  
The horizon line- The horizon line is the line that separates the earth from the sky.  
The vanishing point- is the point that something in the distance disappears.  
Converging Lines- Lines that get closer towards the vanishing point  
Parallel Lines- Lines in a plane that never meet.



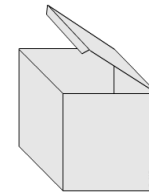
## The Design Process

Design Brief	A statement outlining what is to be designed and made
Specification	A list of design criteria
Research	Sourcing information and inspiration to help with design work
Design Ideas	A range of potential solutions to the problem
Development	Further improving an idea
Final Idea	A presentation drawing of chosen idea
Manufacture	Making the final outcome
Evaluation	Reviewing strengths and weaknesses of the final product and design work

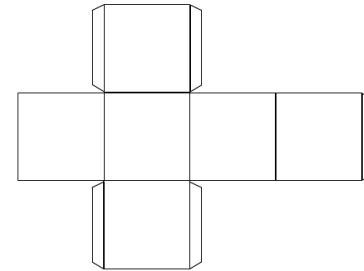


Typography is the art of arranging letters and text in a way that makes the copy legible, clear, and visually appealing to the reader.

CUBE PACKAGING



CUBE NET / DEVELOPMENT

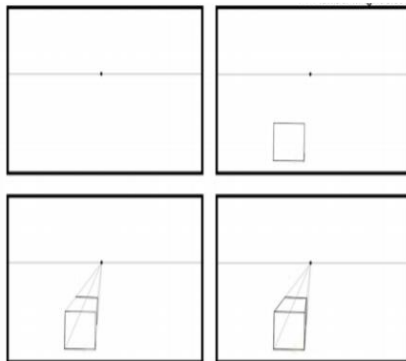


## One Point Perspective

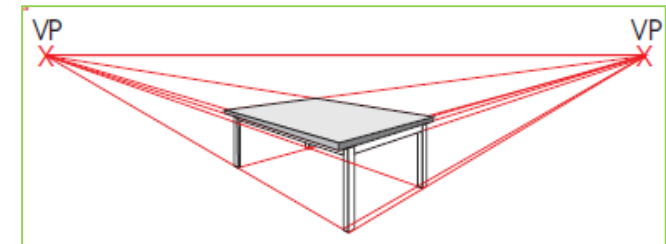
This image demonstrates how to draw a cube in one point perspective and takes you through the process.

Key Points:

- Objects above the horizon line are drawn as if you are looking up at them (you see the bottom of the object).
- Objects below the horizon line are drawn as if you are looking down on them (you see the top of the object)
- Objects that are in line with the horizon line are drawn as if they are at eye level (you see neither the top or bottom of the object).



## Two Point Perspective



This technique involves starting with the central line of the drawing and then extending it outwards towards the two Vanishing Points.

It is best used when looking at something from the position of a corner.