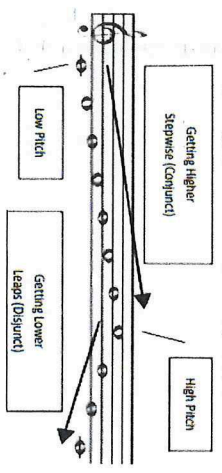


The Elements of Music

Pitch

How high or low a sound is.



Tempo

The speed of a sound or piece of music.

Fast: *Allegro, Vivace, Presto*
Slow: *Andante, Adagio, Lento*

Dynamics

The volume of a sound or piece of music.

- VERY LOUD:** *Fortissimo (ff)*
- LOUD:** *Forte (f)*
- QUITE LOUD:** *Mezzo Forte (mf)*
- QUITE SOFT:** *Mezzo Piano (mp)*
- SOFT:** *Piano (p)*
- VERY SOFT:** *Pianissimo (pp)*



Duration

The length of a sound.

SHORT **LONG**

Texture

How much sound we hear.
THIN TEXTURE: (*sparse/solo*) – small amount of instruments or melodies.

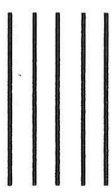


THICK TEXTURE: (*dense/layered*) – lots of instruments or melodies.

Describes the unique sound or tone quality of different instruments voices or sounds.

Velvety, Screechy, Throaty, Rattling, Mellow, Chirpy, Brassy, Sharp, Heavy, Buzzing, Crisp, Metallic, Wooden etc.

Sonority



Stave

STAVE (5 lines and 4 spaces)

Notes and Rests

| Note | Name | Rest on the Stave | Beats |
|------|------------|-------------------|-------|
| | Semibreve | | 4 |
| | Minim | | 2 |
| | Crotchet | | 1 |
| | Quaver | | 1/2 |
| | Semiquaver | | 1/4 |



Treble Clef

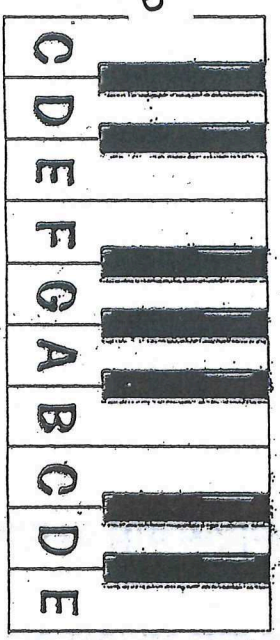
Symbol placed on the stave. Used for high pitch (right hand on the piano)



Bass Clef

Symbol placed on the stave. Used for low pitch (left hand on the piano)

KEYBOARD



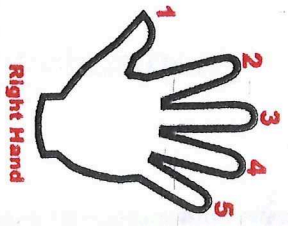
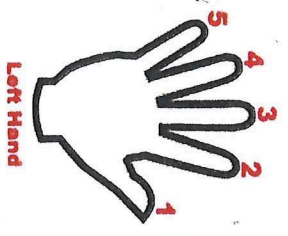
FACE inthespace



FACE inthespace

C D E F G A B C D E F G A

Lines → E(very) G(good) B(oy) D(eserves) F(ootball)



LISTEN

PERFORM

COMPOSE