



# Our Newsletter

Moorside  
Primary Academy



Market Street | Droylsden | M43 7DA

0161 370 3614

admin@moorside-primary.org

www.moorside-primary.net

## Children in Need and the Royal British Legion

We raised over £300 for Children in Need and £97 for the British Legion. Thank you for your generosity – it is especially appreciated in the current climate!

Today, Years 4, 5 and 6 will be doing a local walk to a local church as part of the RE Curriculum. Minister Liz will also be doing an assembly for our younger children.

## Christmas Performances

This year, we are looking forward to welcoming parents and carers back into school to watch children's Christmas performances.

- Wednesday 7<sup>th</sup> December– Nursery and Reception performance at 2:30pm**
- Thursday 8<sup>th</sup> December - Key Stage 1 performance (Year 1 and 2) at 9:30am**
- Thursday 8<sup>th</sup> December - Key Stage 2 Production of 'Bah Humbug' at 2:00pm**
- Friday 9<sup>th</sup> December - Key Stage 1 performance (Year 1 and 2) at 9:30am**
- Friday 9<sup>th</sup> December - Key Stage 2 Production of 'Bah Humbug' at 2:00pm**

You will need to send a message on MCAS/Dojo/email ([admin@moorside-primary.org](mailto:admin@moorside-primary.org)) to request tickets for attention of Mrs Ballinger with which day/performance you require. Tickets will then be sent out.

Raffle tickets will be on sale on the day. **We ask that parents who attend the afternoon performances stay for the whole performance.**

Christmas party discos will be in school in the afternoon and children may wear their own clothes on their party/disco day.

- Monday 12<sup>th</sup> December – Early Years (Nursery and Reception) party/disco**
- Tuesday 13<sup>th</sup> December Year 1 and 2 party/disco**
- Wednesday 14<sup>th</sup> December – Christmas dinner/jumper day**
- Thursday 15<sup>th</sup> December – Year 3 and 5 party/disco**
- Friday 16<sup>th</sup> December -Year 4 and 6 party/disco**

Christmas Dinner Day in school is **Wednesday 14<sup>th</sup> December**. This will also be our Christmas Jumper Day/Christmas dress up day. We will be collecting voluntary donations on the door for the Kidscan charity. Please contact the office if you would like your child to have a Christmas dinner. The deadline for ordering a dinner is **Friday 2<sup>nd</sup> December**. The cost is £2.25.

## Term dates

Term dates for this and the next academic year along with key dates for statutory assessments can be found here. Please note that holidays in term time will not be authorised. <https://moorside-primary.net/term-dates>

## Considerate parking and road safety

Please continue to be considerate to our neighbours by parking in a considerate, safe and legal manner. This helps to keep our families, the children and the community safe. We have spoken to the children about road safety now that we have darker mornings and evenings. Please reinforce road safety with your children at home too.

## Attendance

### Attendance from 31<sup>st</sup> October to the 30<sup>th</sup> November

class	attendance
Nursery am	73%
Nursery pm	86%
Nursery all day	95%
RC	94%
RM	97%
1S	93%
1F	94%
2R	97%
2T	93%
3F	98%
3S	95%
4A	96%
4R	96%
5C	92%
5P	97%
6C	97%
6P	96%

**Overall school attendance for the year is 95.2 %**



Moorside  
Primary Academy

# Our Newsletter



Market Street | Droylsden | M43 7DA

☎ 0161 370 3614

✉ admin@moorside-primary.org

🌐 www.moorside-primary.net

## What's been happening in school?

Please follow us on Twitter to find out what is happening in school!  @MoorsidePA

We had an amazing visit from George White on Tuesday. He is a local barber who is also a singing talent. He has written and performed an England song for the World Cup. I think our singing helped England to a win!

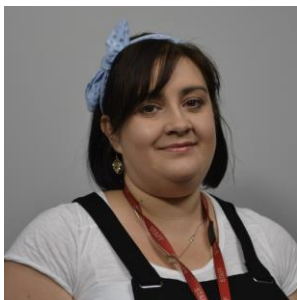


## Year 5/6 Girls' football team



Another great win for our Year 5/6 girls' football team in a recent Tameside SPA Tournament. We have some very talented young footballers in school! Very proud and good luck for the next stage of the tournament!

## ELT Enquire Employee of the Month



Our very own Pastoral and year 2 Teaching Assistant, Mrs McGuire was chosen as the ELT Enquire Employee of the Month! She was chosen out of staff across 30 schools by Darren Holmes (the CEO) for her dedication to both pupils' and staff's mental health and well being. She is a brilliant member of the Moorside team. We are very lucky at Moorside to have Mrs McGuire and all the other great members of staff who make it a special place to learn.