

Areas of Learning:

Maths

Literacy

Expressive Arts and Design

Understanding the World

Communication and Language

Personal, Social & Emotional

Physical

Long Term Topic Overview - Autumn



Autumn 1.2 So Much

L: Book talk, predictions, retelling

L: Set 1 sounds

L: Identifying own name

C+L: Listening and attention

C+L: Speaking and social phrases

PSED: Discussing own experiences and preferences. Build constructive relationships.

M: Numbersense 0-5, comparing amounts, subitising

EAD: Exploring a range of media to express ideas. Developing storylines in pretend play

UtW: Talk about members of their immediate families.

PD: Revise and refine basic movements and fundamental skills. Move towards a more controlled style of moving.



Autumn 1.1 - Baseline

L: Mark making (name writing and simple picture)

M: NfER Maths Baseline Assessment

L: Phonics Moorside RWI Assessment

C+L: WELLCOM Assessment

PSED, C+L: Developing friendships and celebrating individuals.

PD: Assault course / physical games

L: Reading conference

PD: Cutting skills

Autumn 2.1 The Queen's Hat

L: Develop familiarity with some stories, predictions and retelling, Set 1 sounds. Writing own name

C+L: Organises ideas to discuss stories.

C+L: Explores and uses new vocabulary.

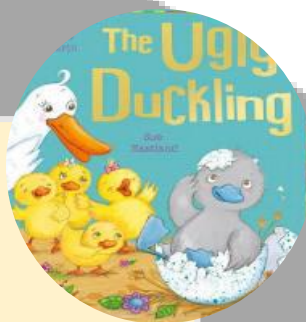
M: Comparing numbers and exploring their composition. Subitising and finding one/more less

PSED: Show resilience and perseverance in the face of challenge. Identifying and moderating their own feelings.

EAD: Return to build upon previous learning, refining ideas developing an ability to represent them.

UtW: Recognise some similarities and differences between life in this country and life in others.

PD: Develop ability to use simple tools competently.



Autumn 1.3 The Ugly Duckling

L: Book talk, predictions, retelling

L: Set 1 sounds. Identifying own name

L: Re-reads a text to develop understanding.

C+L: Developing listening and attention

C+L: Speaking and social phrases

C+L: Describes events in some detail.

C+L: Listen to stories to develop familiarity

M: Comparing and ordering 0-5, sorting objects/shapes by attributes

PSED: See themselves as a valuable individual.

PSED: Express their feelings and consider the feelings of others

EAD: Sing in a group. Use a range of media to express ideas. Developing storylines in pretend play.

UtW: Understand the effect of change and changing seasons on the natural world around them. PD: Revise and refine basic movements and fundamental skills. Move



Autumn 2.3 Celebrations around the World

L: Develop familiarity with some rhymes and songs.

Set 1 sounds, some red words. Writing own name.

C+L: Listens to and talks about various celebrations to develop new knowledge and vocabulary.

M: Exploring Pattern, shape, positional language and measures of height and length

PSED: Think about the perspective and values of others.

EAD: Sing in a group, matching the pitch and following the melody. Explore and engage in music making and dance, performing as part of a group.

UtW: Understand that some places are special to members of their community. Recognise that people have different beliefs and celebrate special times in different ways.

PD: Combine different movements with ease and fluency.



Autumn 2.2 Owl Babies

L: Develop familiarity with some stories, predictions and retelling, Set 1 sounds. Writing own name

C+L: Organises ideas to discuss stories.

C+L: Explores and uses new vocabulary.

M: Introduce number line and part-whole models

PSED: Identify and manage their own feelings and needs. Think about the perspectives of others.

EAD: Listen attentively to music and express their own feelings in response.

UtW: Explore the natural around them. Describing what they hear, see and feel. Understand the effects of changing seasons in the natural world.

PD: Combine different movements with ease and fluency.

Areas of Learning

Maths

Literacy

Expressive Arts and Design

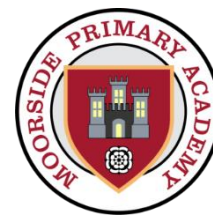
Understanding the World

Communication and Language

Personal, Social & Emotional

Physical

Long Term Topic Overview - Summer



Summer 1.1 St. George and the Dragon

M: Number bonds within ten

L: Comparing characters through use of suitable adjectives.

C+L: Take on the role of a character (drama).

EAD: Express their ideas and feelings through performance. Comment and appraise the performance of others.

PSED: Consider the perspectives of both George and the Dragon. Could the conflict have been resolved differently?

PD: Confidently and safely use a range of small and large apparatus.

UtW: Compare and contrast fictional and non-fictional characters from stories including figures from the past (St. George's history).



Summer 1.2 Superworm

M: Addition / Counting beyond ten

L: Exploring rhyme and characters (spell)

C+L: Using appropriate vocabulary to take on the role of a character.

EAD: Use character of Superworm to represent different everyday objects through mime.

PSED: Show resilience and perseverance in the face of challenge, i.e. how could you help / get help.

PD: Confidently and safely use a range of small and large apparatus (Sports Day).

UtW: Explore the natural world and how insects contribute to our eco-system.



Summer 1.3 Supertato

M: Subtraction / money / weight & capacity

L: Engage in (healthy lifestyle) non-fiction books. Ask questions to find out more and check they understand what has been said to them.

To be familiar with most Set 2 Sounds

C+L Listen to and talk about selected non-fiction to develop a deep familiarity with new knowledge and vocabulary

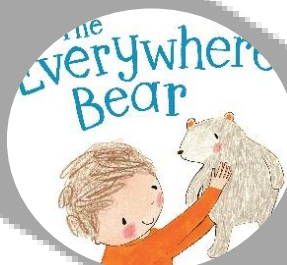
Use new vocabulary in different contexts.

EAD: Watch and talk about dance and performance art.

PSED: See themselves as a valuable individual.

PD: Know and talk about the different factors that support their overall health and wellbeing.

UtW: Describe what they see, hear and feel.



Summer 2.1 The Everywhere Bear

M: Number bonds, + & -, weight & capacity.

L: Setting description, ambitious vocabulary.

C+L: Using conjunctions to extend ideas.

EAD: Junk modelling transport for Bear.

PSED: Show resilience and perseverance in the face of challenge, i.e. how could you help / get help.

PD: Confidently and safely use a range of small and large apparatus (Sports Day).

UtW: Draw information from a text to create a simple map.



Summer 2.2 Amelia Earhart

M: Length and height

L: Exploring imagery and ambitious vocabulary.

Fiction and non-fiction.

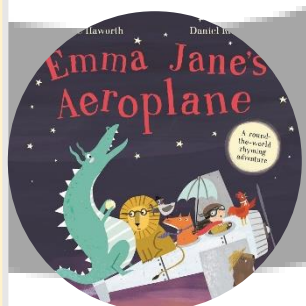
C+L: Communicating ideas through well formed sentences.

EAD: Outdoor loose parts aeroplane.

PSED: See themselves as a valuable individual.

PD: Confidently and safely use a range of small and large apparatus (Sports Day).

UtW: Investigate significant individuals through the use of non-fictional texts (biographies).



Summer 2.3 Emma Jane's Aeroplane

M: Shape and pattern, ordinal numbers, numbers 10+, time

L: Retelling parts of a story in three simple sentences.

C+L: To understand and use ambitious vocabulary.

EAD: Using available resources to collaborate on a landmark construction (Elizabeth Tower, Eiffel Tower).

PSED: Show resilience and perseverance in the face of challenge (transition to Year One).

PD: Confidently and safely use a range of small and large apparatus (Sports Day).

UtW: Recognises some environments that are different to the one in which they live.

Areas of Learning

Maths

Literacy

Expressive Arts and Design

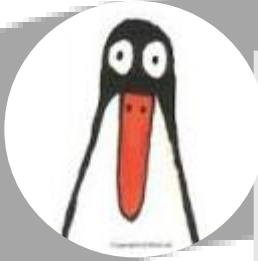
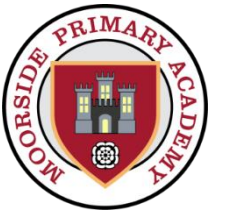
Understanding the World

Communication and Language

Personal, Social & Emotional

Physical

Long Term Topic Overview - Spring



Spring 1.1 Penguin // Lost & Found

M: consolidation of 0-5, measures and pattern

Cardinality and counting 0-10

L: Explore non-fiction and the differences to fiction

Use Set 1 sounds to read and write simple words

C+L: Retell the story using some repetition alongside their own words.

Uses talk to explain how/why things may happen

EAD: Return to build upon previous learning, refining ideas developing an ability to represent them. Explore and engage in dance.

PSED: Think about the perspectives of others. Express their feelings and consider the feelings of others.

PD: Develop overall body strength, balance, co-ordination and agility.

Move towards a more controlled style of moving.

UtW: Recognise that some environments are different to the one in which they live. Draw information from a simple map (globe)

Spring 1.2 Penguin Problems

M: Subitising within 10 and comparisons

Cardinality and applying numerals

L: Explore non-fiction and the differences to fiction. Use Set 1 sounds to read and write simple words.

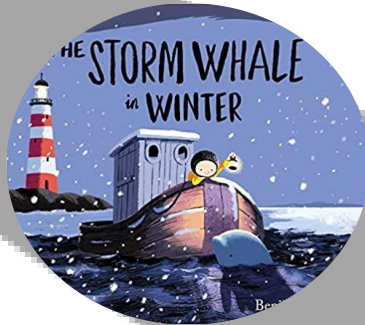
C+L: Retell the story using some repetition alongside their own words. Uses talk to explain how/why things may happen

EAD: Return to build upon previous learning, refining ideas developing an ability to represent them. Explore and engage in dance. (Happy Feet)

PSED: Show resilience and perseverance in the face of challenge.

PD: Develop overall body strength, balance, co-ordination and agility. Move towards a more controlled style of moving.

UtW: Recognise that some environments are different to the one in which they live.



Spring 1.3 The Storm Whale in Winter

M: One more/less within 10 Word problems

Ordinal numbers (Chinese New Year)

L: Explore non-fiction and the differences to fiction

Use Set 1 sounds to read and write simple words

C+L: Retell the story using some repetition alongside their own words. Uses talk to explain how/why things may happen

EAD: Create collaboratively, sharing ideas, resources and skills. Watch and talk about dance and performance art.

PSED: Manage their needs (consider Noi's safety)

PD: Develop overall body strength, balance, co-ordination and agility. Move towards a more controlled style of moving.

UtW: Recognises similarities and differences between environments and the lives within them.

Spring 2.2 Jack and the Beanstalk

M: Properties of simple shapes, rotation and movement of shapes, composition of shape (shapes within shapes).

Measures - weight/capacity

L: L: Engage in non-fiction books. Ask questions to find out more and check they understand what has been said to them.

To be familiar with most Set 2 Sounds

C+L Listen to and talk about selected non-fiction to develop a deep familiarity with new knowledge and vocabulary

Use new vocabulary in different contexts.

EAD: Watch and talk about dance and performance art.

PSED: See themselves as a valuable individual.

PD: Know and talk about the different factors that support their overall health and wellbeing.

UtW: Describe what they see, hear and feel.

Explore the life stages of a plant.

Discuss where food comes from.



Spring 2.1 The Bog Baby

M: Comparisons within 10 / Number bonds to 10

Partitioning 10 using (part-whole)

C+L: Retell the story using some repetition alongside their own words. Uses talk to explain how/why things may happen

L: Use new vocabulary in different contexts

Ask questions to find out more and check they understand what has been said to them

To be familiar with most Set 2 Sounds

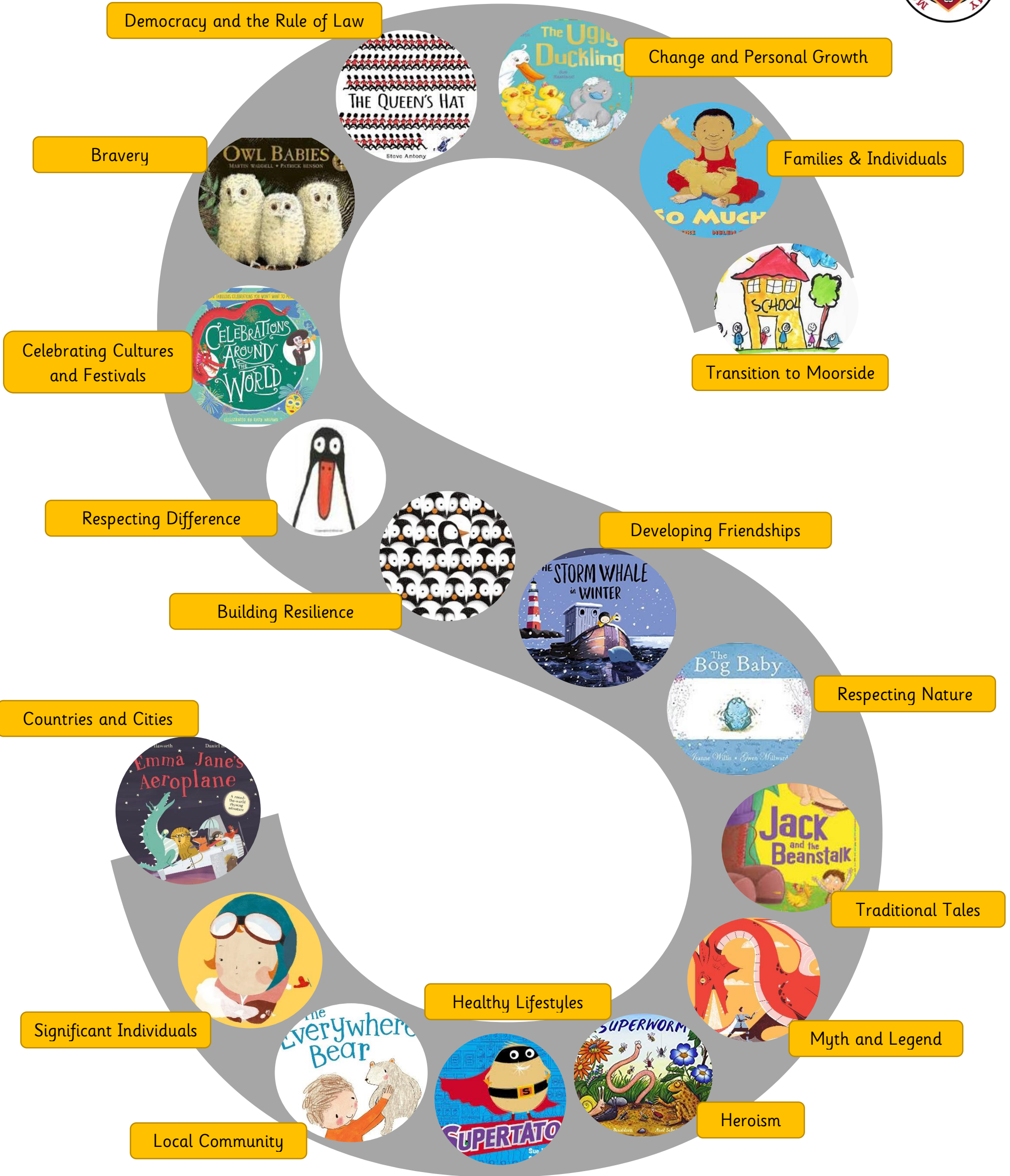
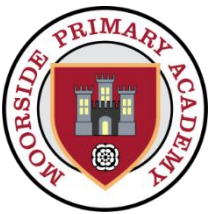
EAD: Create collaboratively, sharing ideas, resources and skills. Develop storylines in their pretend play.

PSED: Build constructive, respectful and caring relationships.

PD: Know and talk about the different factors that support their overall health and wellbeing.

UtW: Understand the effects of the changing seasons on the natural world around them. Explore the natural world around them.

Long Term Topic Overview



Playing and Exploring



Active Learning



Creative & Critical Thinking