

# NEALE-WADE ACADEMY

## ENRICHMENT PROGRAMME

2022-2023





# NEALE-WADE ACADEMY ENRICHMENT PROGRAMME

## Introduction

Our vision for Neale-Wade and our community is one of opportunity, success, confidence and pride.

Experience tells us that we are happiest when we are at our most confident. It is confidence in ourselves and others, that enables us to be proud of who we are and our community.

Being able to progress with our learning and approach the future with optimism is crucial, not only for our own wellbeing, but also ensuring we are successful in our ventures.

Confidence is learned. It is only through opportunity are we able to discover new talents, develop our interests or progress our learning. Providing a range of opportunities in and out of the classroom is fundamental to our curriculum at Neale-Wade.

Recognising our successes is how we embed and reinforce these attributes. It is only through the support and recognition from others, that we can have the courage and motivation to continue our development.

## Opportunities

Our enrichment programme aims to provide opportunities outside of the classroom. It gives students the chance to build on the skills they have and experience different activities, working with staff in a more relaxed environment.

## Skills

Neale-Wade Academy is part of the Skills Builder Partnership which helps to conceptualise 'skills' into essential skills and provides a common approach for building eight essential skills via a Universal Framework which breaks the skills down into their teachable, tangible themes.

There is a wealth of evidence proving the value of building essential skills, including on academic attainment, career aspirations, wellbeing and earnings.

We want our students to recognise these essential skills and to be able to articulate how they can demonstrate these skills by the time they leave us.

Our enrichment programme supports development of these skills through non-curriculum-based activities.



If you would like to attend any of our enrichment opportunities, please access the sign up page in SIMS ACTIVITIES or speak to the teacher running the session.

## AGENTS OF CHANGE

Do you want to build on the success of last year? Launch event early September introducing potential members to the project.

Agents of Change was formed in 2022 to change the way students think about their school community. Following a successful programme of events culminating in the end of term festival in July 2022, Agents of Change, will continue to implement activities to promote the Neale-Wade Academy student experience.

Year Groups: Year 9/10

When: Monday

Which essential skills will this develop?



## ART CLUB

**Art Club** aims to include all ages and abilities across the school, where we will be exploring a range of materials and processes throughout the year, such as upcycling, painting, printing, and drawing. Come and join us in a relaxed environment and get creative

**Key Stage: All**

**When: Tuesday after school**

Which essential skills will this develop?



## ASTRONOMY, SCIENCE CLUB

The first person to walk on Mars is probably already alive and under 18 years old. Are they at Neale-Wade Academy? Could it be you?

**Key Stage: All**

**When: Wednesday after school**

Which essential skills will this develop?



## SPORTS & FITNESS

Our Sports Programme changes termly – please see Miss Boon for further details

Badminton – Monday

Basketball – Tuesday & Thursday

Football – Wednesday

Gymnastics - Tuesday

Fitness - Tuesday

Netball - Tuesday

Dance – Monday

Learn to swim - tbc

All abilities and all age groups, if its football or badminton there is something for everyone, come and give it a try.

Which essential skills will this develop?



## COOKING CLUB

Do you enjoy cooking for friends and family? These sessions will include some practical cooking experimenting then after October half term making and decorating a Christmas Cake.

Numbers are limited due to the facilities available.

**When: Tuesday after school**

Which essential skills will this develop?



## CHINA CLUB

Where is China, how to write your name in Chinese, what is your birth Animal? Hat making, Chinese cookery and learn to speak Chinese – these are just a few of the subjects you will cover over the weeks where you will learn all about the culture, cuisine, history and language of the world's most populous country.

**Key Stage: All**

**When: Wednesday after school**

Which essential skills will this develop?



## COMBINED CADET FORCE – CCF ROYAL AIR FORCE

CCF offers young people a broad range of challenging, exciting, adventurous and educational activities. CCF RAF's aim is to offer development of personal responsibility, leadership and self-discipline.

**Key Stage: Year 9 only**  
**When: Wednesday afternoon**

Which essential skills will this develop?



## COMIC CLUB

Come join us and see your favourite superheroes in action. We even have some of the most popular titles coming all the way from Japan. Have a seat, chill out, make new friends or take a quiet moment to yourself and indulge your love of reading with our many comic books and mangas.

**Key Stage: All**  
**When: Wednesday**

Which essential skills will this develop?



## CREST AWARD SCIENCE

Fun friendly Science investigating, learn to solve the world's problems through CREST a nationally recognised scheme for student-led project work in the STEM Subjects. By joining the club, you will be given the opportunity to gain nationally recognised awards to demonstrate your science skills.

**Key Stage: Year 9 only**  
**When: Monday**

Which essential skills will this develop?



## DUKE OF EDINBURGH

We are here to empower young people; to support them as they learn new skills, overcome obstacles, and build confidence and resilience. We are here for the challenges, the frustrations, the triumphs, and the laughter. We are here because we believe in youth without limits.

**Key Stage: Year 9**  
**When: Thursday Tutor Time**

Which essential skills will this develop?



# LANGUAGE AMBASSADORS

We are looking for a group of enthusiastic students to organise language events throughout the year at Neale Wade and take on responsibility as an ambassador to our department. Your role may include:

- Visiting primary schools to assist in their French/Spanish lessons
- Organising language trips for students
- Creating helpful displays in the language's classrooms
- Learning other new cultures and languages such as German or Japanese
- Organising a 'Spanish Day' in school with costumes, Spanish food, and music
- Organising 'Foreign language spelling bee' competitions within the school and department
- Producing a languages newsletter with events, opportunities and news from around the world
- Getting in touch with international schools who want to know more about life in the UK

You will receive an ambassador's badge and excellent experience working as a leader and mentor within the school. You will also gain more confidence in speaki

**Key Stage: All**  
**When: Tuesday**

Which essential skills will this develop?



## DRAMA CLUB

Come and join us for both on stage and backstage roles. Each year we have an end of year performance that everyone can participate in.

**Key Stage: All**  
**When: Tuesday**

Which essential skills will this develop?

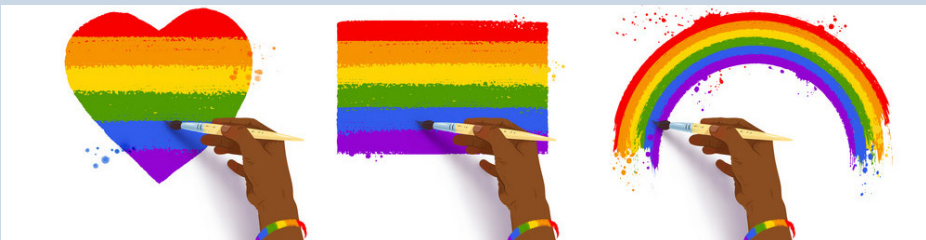


## LGBTQ+ CLUB

In this school alone there is so many unique individuals who succeed at different things in everyday life. During a student's school years its incredibly important that each student is accepted in our environment so they can thrive and succeed. If a student is not accepted the school experience can become scary. This club support students who feel differently about themselves or who want to find out more or support their friends.

**Key Stage: All**  
**When: Monday**

Which essential skills will this develop?



## MUSIC CLUBS

Concert Band - Tuesday

Brass Ensemble – Wednesday Tutor Time

Rock Band – Wednesday – Mr Rideout

Sing Up – Friday Tutor Time

Woodwind Ensemble – Monday Tutor Time

Is it for me?

Do you sing or play an instrument?

Whatever your talent there is something for you coming together for an end of year musical extravaganza!

**Key Stage: All**  
**When: Various (see above)**

Which essential skills will this develop?







## NEWSPAPER CLUB

Are you a budding writer or do you want to have a voice? Join our student-led newspaper. Where you can start spreading the news...

**Key Stage: All**  
**When: Monday**

Which essential skills will this develop?



**SCHOOL EVENT**  
**Newspaper Article**

Give your student an opportunity to become **JOURNALISTS** for a day!

**Your article could be front page news!**

**STUDENTS WILL:**

- ✓ Cover an event in their school
- ✓ Learn how to write an article
- ✓ Practice writing an article
- ✓ Review their peers work

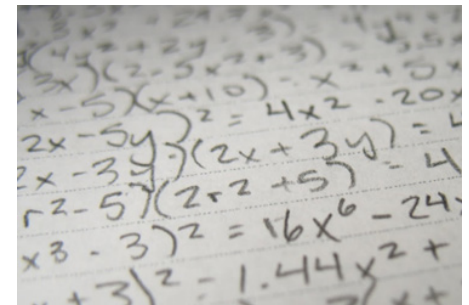
Article template, organizer, and rubric INCLUDED! ✓

## UKMT MATHS CLUB

These sessions will prepare students for participation in the UK national Mathematics challenges – aimed at able Maths Students

**Key Stage: 3**  
**When: Tuesday**

Which essential skills will this develop?



# WELLBEING CLUB

Do you need to unwind and learn strategies to reduce your anxiety? Our relaxed group will show you how to use guided meditation and breathing to bring more calm into your life.



**Key Stage: All**  
**When: Friday morning**

Which essential skills will this develop?



# YOUNG CARERS

Are you a young carer? If so, this session allows you to come and chat with other young carers.

**Key Stage: All**  
**When: Monday**

Which essential skills will this develop?



**Young carers: Who are they? What do they do?**

**Who are young carers?**  
A young carer is someone under 18 who regularly helps look after someone in their family, or a friend, who is ill, disabled or misuses drugs or alcohol.

**How many young carers are there?**  
• There are about 100,000 young carers in the UK (2002-2010)  
• That's about 1 in 12 secondary aged pupils  
• There are likely to be young carers in every school and college

**Who do young carers care for?**  
• Young carers care for someone:  
• Who is ill, injured or disabled  
• Who has mental health conditions  
• Who misuses drugs or alcohol

**Being a young carer can have a big impact on the things that are important to growing up**  
• It can affect a young person's health, school life and performance  
• Many young carers struggle to get the education and training which will secure their future  
• At 16 years, 50% said that looking after their relative was one of their main roles  
• 12% have been helped at school because of their caring role  
• In 2012 only 10% of young carers had been helped to get the skills they need to get a job

**Which one is the young carer?**  
Young carers are just young people - with caring responsibilities. They look like you and me, and feel the same as you and me.

**The average age of a young carer = 12**  
"Don't stereotype us, we are all individuals." Young carer

**1 in 3 young carers spend between 11-20 hours each week caring.**

**Young carers should have:**  
• The time to be a young person.  
• The same opportunities as their friends.  
• Good support for the person they help look after.

**Information and support**  
[www.youngcarers.net](http://www.youngcarers.net) (on an email)  
[www.youngcarersnationalist.org](http://www.youngcarersnationalist.org) (on a job)  
[www.makewaves.org.uk](http://www.makewaves.org.uk) (on a job)

Careers Trust is a registered charity in England and Wales (1141081) and in Scotland (SC042617). Registered as a company limited by guarantee in England and Wales No. 7627113. Registered office: 50-56 Lutter Street, London EC1A 1JH. © Careers Trust 2014. Originally produced by Careers Week 2014. [www.careersweek.org](http://www.careersweek.org) is the website for the event.

# YOUTH STEM AWARD

Youth STEM Award (YSA) is a skills framework for young people in years 9-13. It is designed to support and inspire the next generation into STEM which stands for science, technology, engineering, maths and medicine.

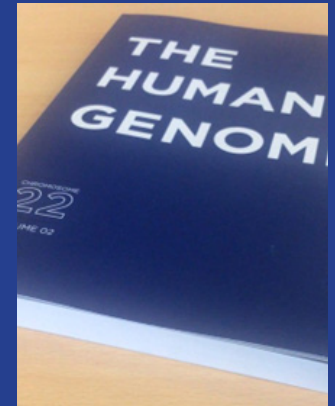
Once registered, participants take part in extracurricular and supra-curricular activities and log them to the YSA e-portfolio. They will each receive a certificate and medal upon completion and have a personalised record of achievement, great for interviews and applications. Working with the Babraham Institute, students investigate a mixture of each of the STEM disciplines (Science, Technology, Engineering, Mathematics & Medicine).

**Key Stage: 4 and Sixth Form**  
**When: Various (see above)**

Which essential skills will this develop?



**A framework to develop and evidence skills in STEM:**



# PSYCH CLUB

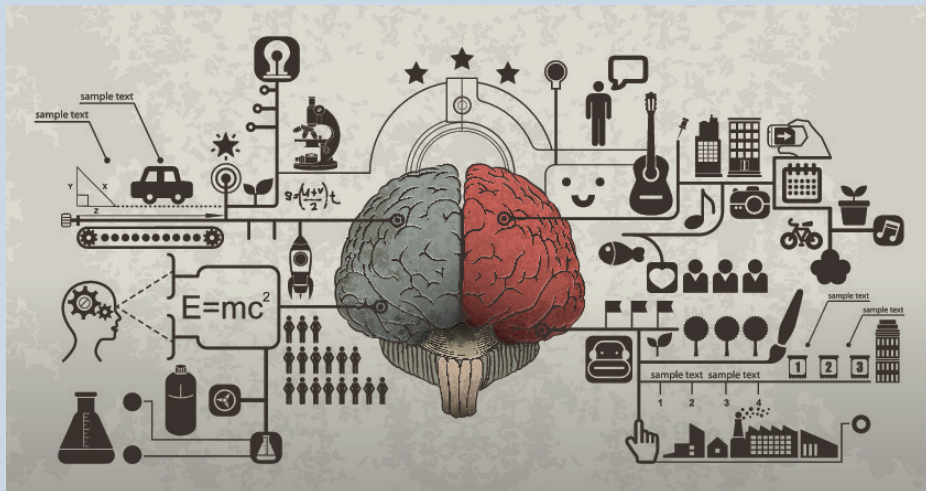
Psych club offers the opportunity to study issues covered in Psychology class in more depth and look at some wider issues not covered by the syllabus, eg, sexism, gender identity and racism in society, nature v nurture, free will v determinism, how we learn (types of conditioning)

Sessions involve group discussions, visiting speakers, watching appropriate film excerpts and the most popular bit, taking part in and running Psychological Experiments!!

**Key Stage: Year 10 & 11**

**When: Wednesday**

Which essential skills will this develop?



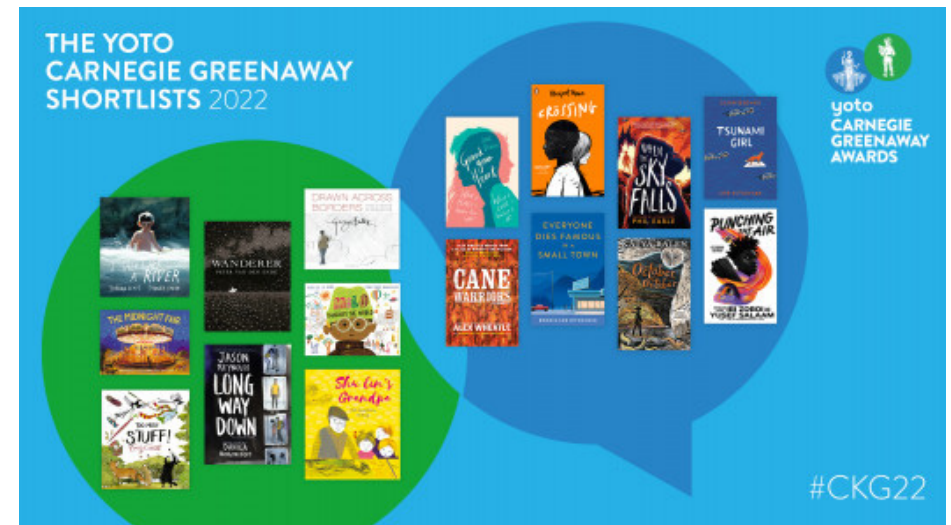
# CARNEGIE READERS CLUB

An opportunity for avid readers: we meet each week to discuss, review and read the long listed and short listed books for the Carnegie children's book awards.

Recreate your favourite book in the form of a cake or just enjoy the reading. At the end of the term we will watch the award ceremony on line.

**Key Stage: 3**

**When: Friday tutor time**





MONDAY	TUESDAY	WEDNESDAY	THURSDAY	FRIDAY
Maths Revision – FT Mrs Barnes	UKMT Maths Challenge Yr 7/8 – Maths Dept.	Maths Revision FT Mrs Barnes/Mr Mann	RE Revision Ms Fogarty (8-8.45)	
Maths Revision – HT	Geography Revision Mr Smith	Sociology Revision Mrs Huett		
Maths Revision Post 16	Maths Revision – FT Mrs Barnes	GCSE Art Intervention Mr Alam Yr10 (3.20-4.20)		
Science Revision	Maths Revision – HT			
Homework/Mymaths	Maths Revision  Post 16			
BTEC Sport Intervention Yr 11	English Revision  Mr Thomas GCSE Art Intervention Mrs Starr Yr11 (3.20-4.20) Health & Social Care Coursework catch up G42 Ms Robson/Mrs Foreman			





Wimblington Road  
March  
Cambridgeshire  
PE15 9PX

Tel: 01354 606000

office@neale-wade.org  
**www.neale-wade.org**