

Monday 8th June: Good morning Year 5. We hope you had a great weekend and are ready for another week. We are going to have a super time learning lots of new things and trying new activities as its Science Week! Remember that in order to learn, as Maya Angelou (poet and author) quoted, "Nothing will work unless you do". Follow Sir Colonel Tom's quote, "Tomorrow will be a good day". Can you discover your own inspirational quote for today?

Daily reading

Reading is such an important skill to have; it supports you in everything you do. Today, read for at least 30 minutes, sit somewhere quiet where you can concentrate and ensure you comprehend what you are reading.

You could also listen to some stories - if you haven't done so already, try this website out. Sit back and enjoy.

<https://www.storylineonline.net/>



HARRY
The Dirty Dog



**Thank you,
Mr. Falker**

Daily times tables

Please continue to learn your year group times tables: 6x, 7x and 9x. If these are a bit tricky, please work on your 2x, 5x and 10x or 3x, 5x and 8x.

Throw two dice and write down the multiplication of the two numbers they land on? If you want to work on tables higher than 1 to 6, use small stickers to change the numbers, or design your own dice. Can you have a competition with a family member? Who got more correct calculations? Who was faster?

Times tables Game: <https://www.topmarks.co.uk/maths-games/hit-the-button>

Termly Spellings

Please take time to learn spellings for future weeks and to re-visit past spellings.

These can be found on the school website at <https://www.newbridge.bathnes.sch.uk/> and go to the tab **Classes** and click on your class.

impossible
responsible
invisible
incredible
sensible

Activities you could do are:

- Find the meaning of the words
- Put the words into sentences
- If there is a pattern, how many words can you find with the same pattern?
- Draw pictures of the what the words mean with the word in the picture
- Create a word search
- Create a crossword
- Test your parents!

You can choose one a day; we will put these suggestions on each daily plan.

Pick a starting point on the compass and describe a turn to your partner. Use the mathematical words to describe your turns:

- Clockwise
- Anti-clockwise
- Degrees
- Acute
- Obtuse
- Reflex
- Right angle

Can your partner identify where you will finish?

Go outside – go for a walk and identify angles that you can see. How many reflex angles can you find? Could you make a picture using natural things. Try to make a right angle, an acute angle, reflex angle and obtuse angle. If you don't have a garden, look around your home for different angles. We would like to see a photograph of the angles you have made or seen!



E.g. Would this be an example of an acute angle?

How could you show a reflex angle on the kitchen tongs?

Challenge:

Identify all the different angles in this picture:



Parts of a flower:

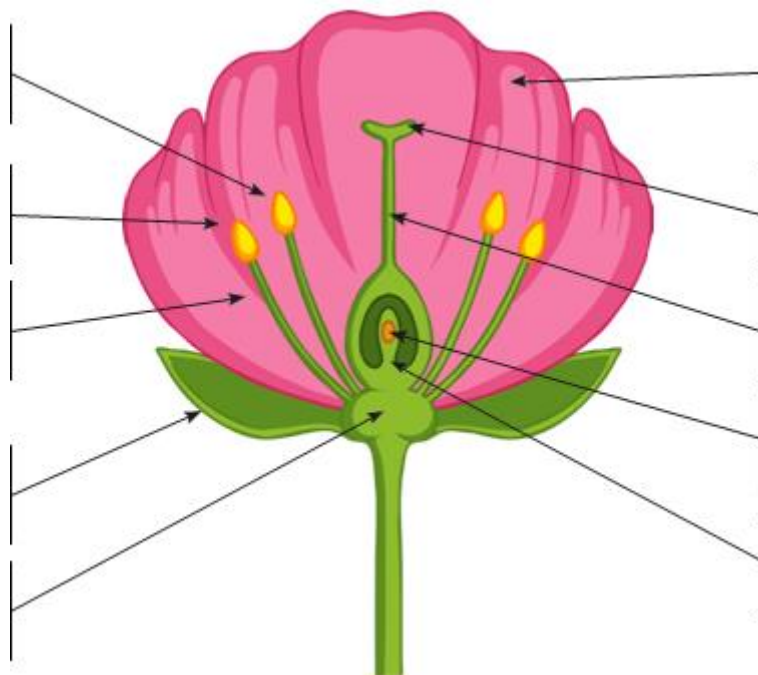
At this time of year, there are many flowers in gardens and in parks. They are so pretty and smell lovely too, but do you know why they look like they do or how they grow?

We would like you to draw the flower and label each of the parts. Can you work out the correct name for each part?

Once you have labelled the parts, you must write a short explanation about what their specific function is. There are some notes below the flower to help you.

Which is...?

- Stamen
- Anther/pollen
- Filament
- Ovule
- Ovary
- Petal
- Sepal
- Style
- Receptacle
- Stigma





These are often brightly coloured to attract insects for pollination.

This is the male part of the flower. It contains pollen grains which produce male sex cells.

These small leaf-like parts protect the flower inside the bud.

This is the female part of the flower. The female sex cells are contained in the ovules.

Healthy Me	 <p>Why not make a smoothie. Use your favourite fruit and turn it into a lovely refreshing drink. Let us know what you made. You could think of a name for your smoothie and advertise it for your family and friends to make.</p> <p>Here are some ideas:</p> <ul style="list-style-type: none"> • Pineapple Juice + 1 cup pineapple + 1 cup mango + vanilla yogurt + banana + 1 cup spinach • Apple juice + 2 cups mixed berries + huckleberry yogurt • Orange Banana Juice + 1 cup pineapple + 1 cup peach + vanilla yogurt + banana • Orange Juice + 2 cups strawberries + strawberry yogurt + banana
-------------------	---

Problem of the Day	
---------------------------	--

The activities below are supplementary and can be used to further extend learning opportunities whilst at home.

Home Learning	<p>Please look at your Home Learning grid. Visit the school website at https://www.newbridge.bathnes.sch.uk/ and go to the tab Classes and click on your class.</p> <p>Please plan and complete these activities throughout the duration of the school closure.</p>
National Curriculum Word Lists	<p>Look in your Reading Log and find all of the spellings for your year group. How many of these can you learn? Use the strategies listed at the top of the page.</p>
Curriculum Overview	<p>Take time to look at the Curriculum Overview for your year group. This can be found on the school website at https://www.newbridge.bathnes.sch.uk/ Go to the tab Key Information, go down the menu on the left hand side to Curriculum, go to Termly Overview and click on the one for your year group.</p> <p>Talk to a grown up at home and decide on an aspect you would like to find out more about. This means that when you come back to school, you will be able to share something new.</p>
Useful websites	<p>Please see the useful websites list.</p>

Well done for trying all of these areas of learning. Please can I ask that your parent sends a few lines in an email to let me know what you have completed today.

5B:5b@newbridge.bathnes.sch.uk **5H:**5h@newbridge.bathnes.sch.uk

Please look out for tomorrow's learning, from Mrs Bartlett and Mr Handson