

Thursday 16th July: *Good morning! Enjoy some more summer-themed learning with today's range of activities.*

Daily reading

Please read the comprehension text and answer the attached questions.

The Way Through the Woods by Rudyard Kipling

Read this poem 'The Way through the Woods' and then answer the following questions:

They shut the road through the woods
Seventy years ago.
Weather and rain have undone it again,
And now you would never know
There was once a road through the woods
Before they planted the trees.
It is underneath the coppice and heath,
And the thin anemones.
Only the keeper sees
That, where the ring-dove broods,
And the badgers roll at ease,
There was once a road through the woods.

Yet, if you enter the woods
Of a summer evening late,
When the night-air cools on the trout-ringed pools
Where the otter whistles his mate,
(They fear not men in the woods,
Because they see so few.)
You will hear the beat of a horse's feet,
And the swish of a skirt in the dew,
Steadily cantering through
The misty solitudes,
As though they perfectly knew
The old lost road through the woods.
But there is no road through the woods.



1. Which season is this poem set in? Circle one.

spring

summer

autumn

winter

2. Why are you no longer able to see the road through the woods?

3. 'Steadily cantering through'

Tick the word closest in meaning to 'steadily'.

annually ☐

gradually ☐

quickly ☐

noisily ☐

4. 'You will hear the beat of a horses feet

And the swish of a skirt in the dew.....

.....But there is no road through the woods.'

What do you think that the poet is describing in the last part of the second verse?

If you are unable to access the comprehension, make sure to do 30 mins of independent reading today and discuss what you have read with an adult. Also, take time to ask family members about the books that they are reading.

Daily times tables

Use your understanding of repeated addition (and multiplication) to help answers these problems:

MojiMaths Number Addition Challenge Cards ★★

Each emoji represents a number. Find the number each emoji represents. Find the answer to the final calculation.

1. $\text{😬} + \text{😬} + \text{😬} = 21$
 $\text{😬} + \text{😬} + \text{😬} = 19$
 $\text{😬} + \text{😬} + \text{😬} = 18$
 $\text{😬} \times \text{😬} + \text{😬} = \square$

MojiMaths Number Addition Challenge Cards ★★

Each emoji represents a number. Find the number each emoji represents. Find the answer to the final calculation.

2. $\text{🏃} + \text{🏃} + \text{🏃} = 24$
 $\text{🏃} + \text{🏃} + \text{🏃} = 18$
 $\text{🏃} + \text{🏃} + \text{🏃} = 14$
 $\text{🏃} \times \text{🏃} + \text{🏃} = \square$

MojiMaths Number Addition Challenge Cards ★★

Each emoji represents a number. Find the number each emoji represents. Find the answer to the final calculation.

3. $\text{😬} + \text{😬} + \text{😬} = 33$
 $\text{😬} + \text{😬} + \text{😬} = 26$
 $\text{😬} + \text{😬} + \text{😬} = 13$
 $\text{😬} + \text{😬} \times \text{😬} = \square$

MojiMaths Number Addition Challenge Cards ★★★

Each emoji represents a number. Find the number each emoji represents. Find the answer to the final calculation.

4. $\text{😬} + \text{😬} + \text{😬} = 249$
 $\text{😬} + \text{😬} + \text{😬} = 303$
 $\text{😬} + \text{😬} + \text{😬} = 59$
 $\text{😬} + \text{😬} \times \text{😬} = \square$

Termly Spellings

Spellings can be found on the school website at <https://www.newbridge.bathnes.sch.uk/> - go to the tab **Classes** and click on your class.

This week's spellings are:

adorably miserably comfortably suitably understandably

Activity:

Can you discover this week's spellings in the word search below?

E P K B E H R S K L W I D Y M Y
R C O R X M F M E X N W F L I B
J R B A H W A Y Q W B U E B S A
C O M F O R T A B L Y P Q A E U
F E Q N W V Z V F H L C P T R T
Q L I P D Q N V K N J D E I A I
Y L B A D N A T S R E D N U B O
Y L B A R O D A S Y R B F S L A
H W Q E R N Z P D F V T A S Y A
X J J D P K C Q M Z Y O L H X L

Daily Maths

Can you answer this range of problems that focuses on healthy eating?

Maths Mastery Healthy Eating

1. Pavel eats 28 servings of fruit and vegetables in one week. If the ratio of the fruit and vegetables he eats is 5:2, how many servings of vegetables did he eat?



The following week, Pavel eats 35 servings of fruit and vegetables. If the ratio of fruit and vegetables is the same, how many more servings of fruit did he eat in the second week?

Maths Mastery Healthy Eating

2. Nikita is making her own reduced-sugar, strawberry jam. She uses 30% less jam sugar than the recipe recommends.

Strawberry Jam Recipe

Strawberries 800g
Jam Sugar 600g



How much jam sugar does she use?

This recipe would fill 4 jars. If Nikita wants to make 12 jars, how much jam sugar will she need for her reduced-sugar, strawberry jam?

Maths Mastery Healthy Eating

3. George researches the amount of sugar in fizzy drinks. He uses the formula 4g sugar = 1 teaspoon.

Complete the table of information, rounding your answers to the nearest whole number where necessary.

Drink	Grams of sugar per can (330ml)	Teaspoons of sugar per can (330ml)
Fizzy Orange	12g	
Cola		7tsp
Lemonade	20g	
Fizzy Apple	18g	

George said, "One can of fizzy orange contains 0.0012kg of sugar." Is he correct? Explain your reasoning.

Maths Mastery Healthy Eating

4. Omega 3 acids have proven health benefits. Pavel researches the amount of Omega 3 in different foods.

Food	Measure	Approximate amount of Omega 3
Linseeds	1 teaspoon	0.5g
Sardines	20g	0.6g
Walnut	1 walnut	0.3g
Spinach	90g	0.12g

The approximate daily intake of Omega 3 for children aged 9 - 11 years is about 1g per day.

List possible combinations of foods Pavel could eat over one week to meet the weekly recommended intake.

Maths Mastery Healthy Eating

5. Nikita looks at the nutritional information on the packaging of her raisins:

Per 30g serving Typical Values				
Energy 90 calories 4%	Fat 3g <1%	Saturates <0.1g <1%	Sugars 24g 25%	Salt 0.05g <1%

How many calories are there in 50g serving?

How many grams of sugar are there in a 70g serving?

What is the daily recommended amount of sugar?

Maths Mastery Healthy Eating

6. George aims to drink 1.25 litres of water every day.



Bottle
Approximately 550ml



Cup
Approximately 325ml

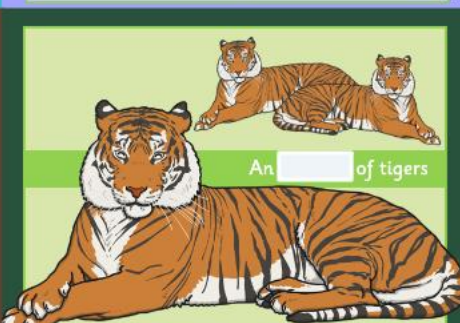
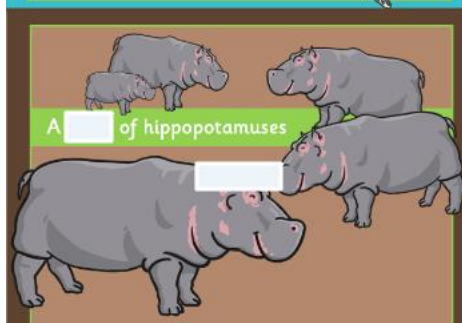
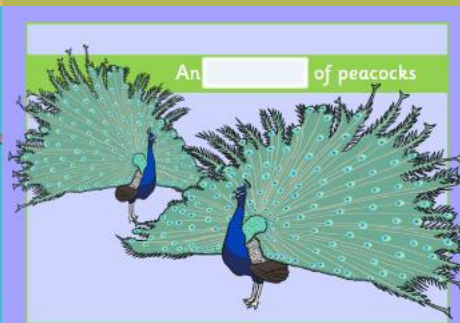
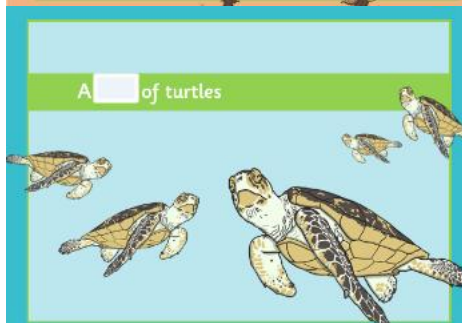
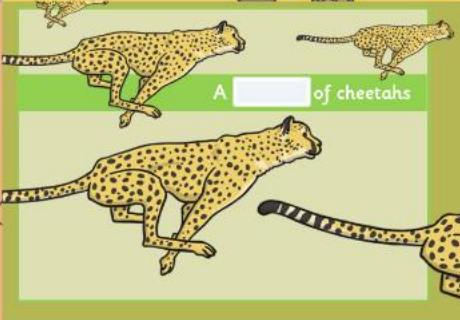
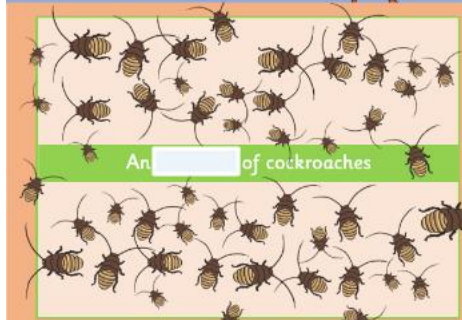
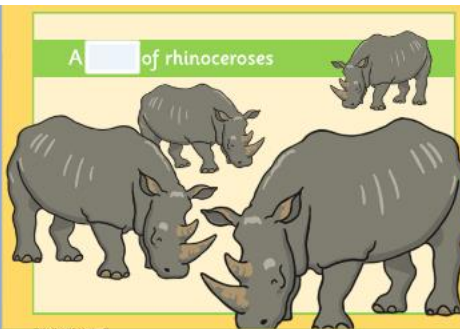
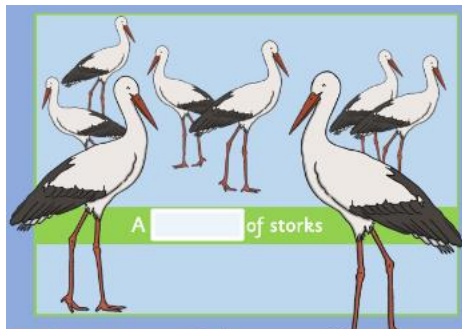
How many more millilitres of water does George need to drink if he has already had 1 bottle and 1 cup of water?

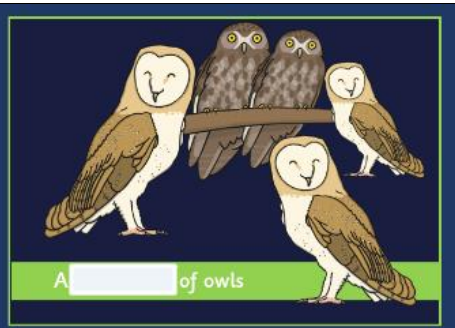
George says, "If I drink two bottles of water, I only need to drink another 100ml to reach my target." Is he correct? Explain your reasoning.

Daily English

There are many common collective nouns (a *herd* of cows, a *flock* of sheep etc) but also a wide range of fun and interesting ones. Also known as 'nouns of assemblage', can you match these to their animals?

- bloat
- mustering
- coalition
- parliament
- bale
- ostentation
- ambush
- intrusion
- pandemonium
- crash





Can you make up some collective nouns of your own? i.e. a treasure of children.

The cards below feature a variety of different ways that can help you look after yourself. Can you think of at least **four more** 'I should...' statements that are just as helpful?



Can you find 9 behaviours that will keep you safe whilst using the internet?

FIND 9: The best Internet Safety Behaviors				
say nasty things back	give out personal information	use your real name	speak to an adult straight away if something upsets you	talk to friends you know in real life
be kind and respectful	keep your personal information private	share pictures of yourself without asking an adult	use a safe search engine	exclude friends from groups
take regular breaks from the internet	make friends with people you don't know	BLOCK people who say nasty things	make up a fun user name	use the internet when an adult is in the room

The activities below are supplementary and can be used to further extend learning opportunities whilst at home.

Home Learning	<p>Please look at your Home Learning grid.</p> <p>Visit the school website at https://www.newbridge.bathnes.sch.uk/ and go to the tab Classes and click on your class.</p> <p>Please plan and complete these activities throughout the duration of the school closure.</p>
National Curriculum Word Lists	Look in your Reading Log and find all of the spellings for your year group. How many of these can you learn? Use the strategies listed at the top of the page.
Curriculum Overview	<p>Take time to look at the Curriculum Overview for your year group. This can be found on the school website at https://www.newbridge.bathnes.sch.uk/ Go to the tab Key Information, go down the menu on the left hand side to Curriculum, go to Termly Overview and click on the one for your year group.</p> <p>Talk to a grown up at home and decide on an aspect you would like to find out more about. This means that when you come back to school, you will be able to share something new.</p>
Useful websites	Please see the useful websites list.

Well done for trying all of these areas of learning. Please can we ask that your parent sends a few lines in an email to let us know what you have completed today.

5B: 5b@newbridge.bathnes.sch.uk 5H: 5h@newbridge.bathnes.sch.uk

Please look out for tomorrow's learning, from Mrs Bartlett and Mr Handson

Answers:

Reading:

The Way Through the Woods by Rudyard Kipling

1. Which season is this poem set in? Circle one.

spring

summer

autumn

winter

2. Why are you no longer able to see the road through the woods?

They shut the road seventy years ago and now all of the trees and plants have grown where it used to be.

3. 'Steadily cantering through'

Tick the word closest in meaning to 'steadily'.

annually ☐

gradually ☒

quickly ☐

noisily ☐

4. 'You will hear the beat of a horses feet

And the swish of a skirt in the dew.....

.....But there is no road through the woods.'

What do you think that the poet is describing in the last part of the second verse?

You are still able to hear the sounds of the ghosts that used to use the road years ago despite the fact that there is no longer a road.

Timetables:

1. $7 + 7 + 7 = 21$

2. $8 + 8 + 8 = 24$

3. $11 + 11 + 11 = 33$

4. $101 + 47 + 101 = 249$

$7 + 7 + 5 = 19$

$8 + 8 + 2 = 18$

$11 + 4 + 11 = 26$

$101 + 101 + 101 = 303$

$5 + 8 + 5 = 18$

$2 + 6 + 6 = 14$

$4 + 4 + 5 = 13$

$6 + 6 + 47 = 59$

$7 \times 5 + 8 = 43$

$8 \times 2 + 6 = 22$

$11 + 4 \times 5 = 31$

$101 + 6 \times 47 = 383$

Daily English:

A mustering of storks, a crash of rhinoceroses, an intrusion of cockroaches, a coalition of cheetahs, a bale of turtles, an ostentation of peacocks, a bloat of hippopotamuses, an ambush of tigers, a pandemonium of parrots, a parliament of owls.

Challenge:

A cast (or company/troupe) of actors
 A murder of crows
 A constellation (or galaxy) of stars
 A bunch of keys
 A shrewdness (or troop) of apes

Daily Maths:

1. $28 \div 7 = 4$

$2 \times 4 = 8$ servings of vegetables

Week 1: $28 \div 7 = 4$

$4 \times 5 = 20$ servings of fruit

Week 2: $35 \div 7 = 5$

$5 \times 5 = 25$ servings of fruit

$25 - 20 = 5$ servings of fruit

2. 10% of $600\text{g} = 60\text{g}$ so 30% of $600\text{g} = 180\text{g}$

$600\text{g} - 180\text{g} = 420\text{g}$ of sugar used.

Accept any appropriate method to reach 1260g or 1.26kg .

3.

Drink	Grams of sugar per can (330ml)	Teaspoons of sugar per can (330ml)
Fizzy Orange	12g	3tsp
Cola	28g	7tsp
Lemonade	20g	5tsp
Fizzy Apple	18g	5tsp

George is incorrect. In one can of fizzy orange, there are 12g of sugar (0.012kg).

4. Accept all answer combinations that total 7g.

5. 150 calories

56g

96g

6. 375ml

George is incorrect. $550\text{ml} + 550\text{ml} = 1100\text{ml}$

$1250\text{ml} - 1100\text{ml} = 150\text{ml}$

Problem of the Day:

say nasty things back	give out personal information	use your real name	speak to an adult straight away if something upsets you	talk to friends you know in real life
be kind and respectful	keep your personal information private	share pictures of yourself without asking an adult	use a safe search engine	exclude friends from groups
take regular breaks from the internet	make friends with people you don't know	BLOCK people who say nasty things	make up a fun user name	use the internet when an adult is in the room