

Wednesday 17th June

Good Morning! How are you all?

Since 1994, June 17th has been the World Day to Combat Desertification and Drought to draw public attention to the UN Convention to Combat Desertification and it has been celebrated ever since. Do you know what desertification is? Perhaps you could find out. Have a lovely day!

Love Mrs Button and Mrs Amor.

Daily reading

Please read for at least half an hour today. Choose 10 adjectives from your reading and write 2 synonyms (same) and 2 antonyms (opposite) for them.

Year 6 Book Group

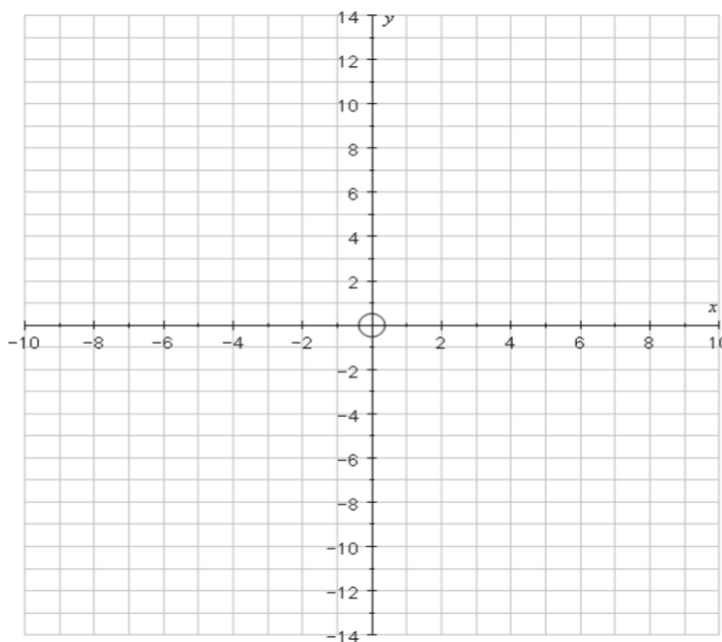
I would like you to finish **Orphans of the Tide by Struan Murray** (make sure you have a biscuit and a drink when you are reading). I hope that you enjoyed it – I certainly did!

Daily Maths

Revision - Coordinates

Ready:

Draw this in your maths books



Connect the coordinates in order to draw a mystery creature

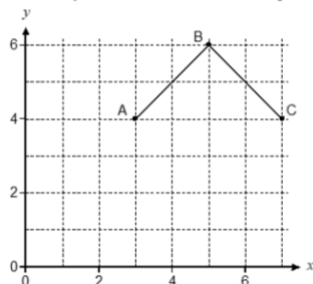
Body: (5,7) (5,6) (6,4) (2, -4) (0,-5) (-1,-6) (-2,-9) (-1,-11) (0,-12) (0,-13) (-3,-12) (-3,-11) (-4,-9) (-4,-6) (-6,-9) (-8,-11) (-8,-12) (-1,-14) (-7,-14) (-10,-13) (-10,-11) (-8,-9) (-6,-3) (-5,1) (-3,3) (2,6) (2,10) (3,11) (5,12) (9,10) (9,9) (6,9) (9,8) (8,7) (5,7)

Arm: (3,3) (5,1) (7,1) (7,0) (4,0) (2,2)

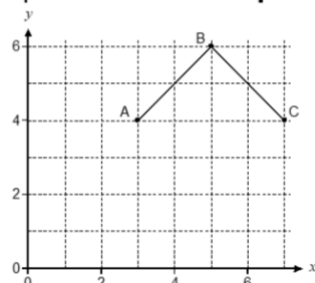
Front Leg: (2,-4) (3,-11) (4,-12) (4,-13) (1,-12) (1,-11) (0,-5)

Steady:

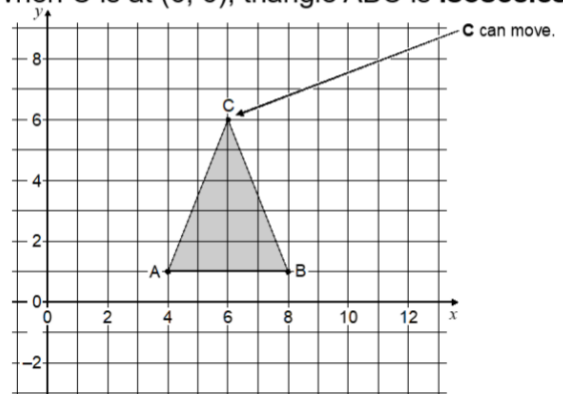
1a) Where should you put point D so that shape ABCD is a **square**?



b) Where could you put point E so that shape ABCDE is a **trapezium**?



2. On this grid, **A and B must not move**. When C is at (6, 6), triangle ABC is **isosceles**.

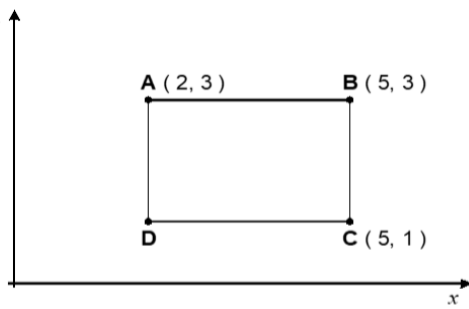


(a) C moves so that triangle ABC is still **isosceles**. Where could C have moved to?

(b) Then C moves so that triangle ABC is **isosceles and right-angled**. Where could C have moved to?

Go:

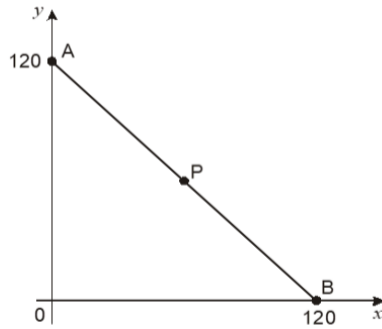
3. y



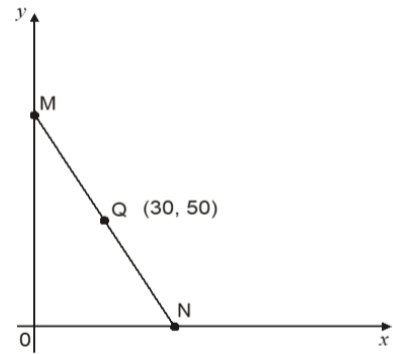
(a) The point K is **halfway** between points B and C. What are the coordinates of point K?

(b) Shape ABCD is a rectangle. What are the coordinates of point D?

4a) P is the **midpoint** of line AB. What are the coordinates of point P?

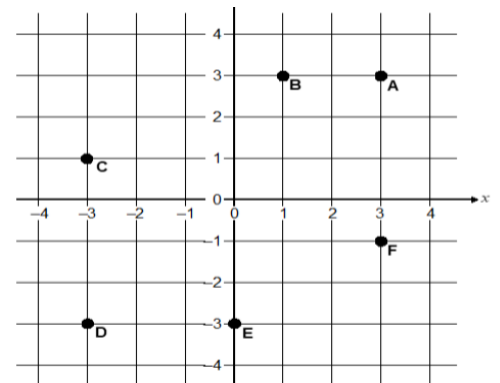


4b) Q is the **midpoint** of line MN. The coordinates of Q are (30, 50). What are the coordinates of points M and N?



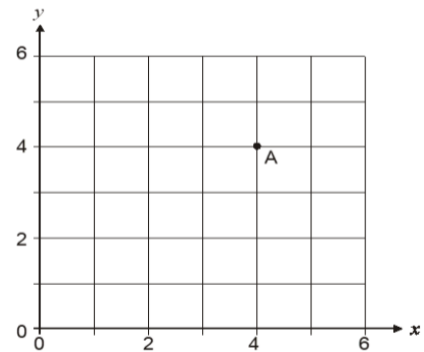
5. The grid shows six points labelled A, B, C, D, E and F. Complete the table to show which points have coordinates that match the rules below. The first one is done for you.

Rule	A	B	C	D	E	F
$x = 3$	✓	✗	✗	✗	✗	✓
$y = -3$						
$x = y$						



6. Point A is marked on the grid. The coordinates of A are (4, 4). Mark **one point** on the grid that has:

an **x** coordinate that is **equal to 4**, and
a **y** coordinate that is **greater than 4**



Daily English

This week, we will be looking at **Fairtrade**. Today, you are going to watch a video about chocolate.

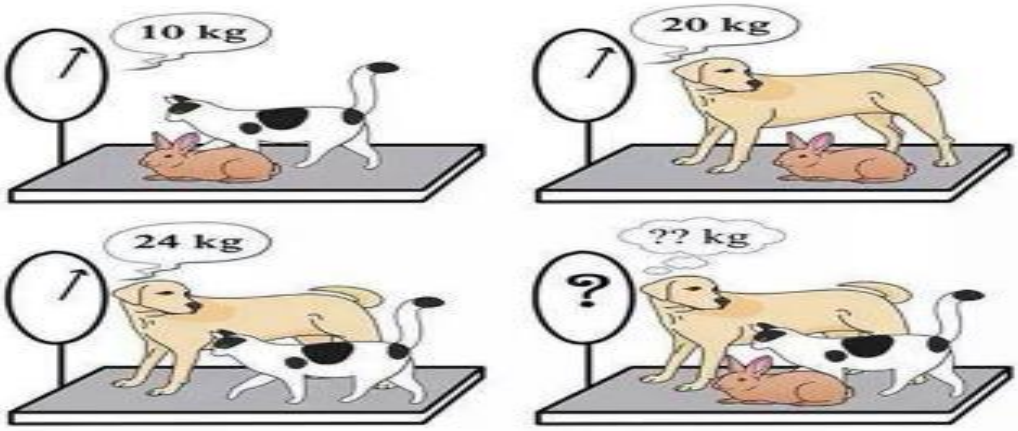
<https://schools.fairtrade.org.uk/resource/the-story-of-chocolate-unwrapping-the-bar/>
Ann Marie tells us about the daily routine of a cocoa farmer.

Task:

Using the information you have learnt from 'Unwrapping the Bar', write a Fairtrade chocolate quiz for your family.

Well-being

Indoor bowling alley - Stack up some plastic cups, plastic bottles or blocks, and create your own bowling alley. Use a ball to roll down and see how many you can knock over.

Problem of the Day	<p>Yesterday's problem: There were 4 squares.</p> <p>Today's Problem: What weight are the animals?</p> 
---------------------------	---

Healthy Me	<p>Have a go at this Zumba! https://www.youtube.com/watch?v=bS2mngPhwGE</p>
-------------------	--

The activities below are supplementary and can be used to further extend learning opportunities whilst at home.

Home Learning	<p>Please look at your Home Learning grid. Visit the school website at https://www.newbridge.bathnes.sch.uk/ and go to the tab Classes and click on your class. Please plan and complete these activities throughout the duration of the school closure.</p>
----------------------	---

Termly Spellings	<p>Please take time to learn spellings for future weeks and to re-visit past spellings. These can be found on the school website at https://www.newbridge.bathnes.sch.uk/ and go to the tab Classes and click on your class.</p> <p>Also, you can learn the Year 5/6 statutory words that we have provided for you. Concentrate on the spellings that you know you find tricky.</p> <p>Remember the ways in which we practice them each week in class:</p> <ul style="list-style-type: none"> • Writing them forwards and backwards • Writing the vowels in a different colour • Write them in a pyramid shape • Look, write, cover, check • Each letter could be a different colour • You could also find out their meaning by using a dictionary. • Can you write each one in a sentence?
-------------------------	---

National Curriculum Word Lists	<p>Look in your Reading Log and find all of the spellings for your year group. How many of these can you learn? Can you write a sentence using the words?</p>
---------------------------------------	---

Curriculum Overview	<p>Take time to look at the Curriculum Overview for your year group. This can be found on the school website at https://www.newbridge.bathnes.sch.uk/ Go to the tab Key Information, go down the menu on the left hand side to Curriculum, go to Termly Overview and click on the one for your year group.</p> <p>Talk to a grown up at home and decide on an aspect you would like to find out more about. This means that when you come back to school, you will be able to share something new.</p>
----------------------------	---

Useful websites	<p>Please see the useful websites list.</p>
------------------------	---

Well done for trying all of these areas of learning. Please can I ask that your parent sends a few lines in an email to let me know what you have completed today
 All Year 6 communication to go through this email:
6b@newbridge.bathnes.sch.uk

Please look out for tomorrow's learning, from Mrs Amor and Mrs Button.