

Wednesday 8th July:

Good morning, good morning! Did you all get up early this morning ready to start another amazing day? We have already had the longest day this year, which was on June 20th (Summer Solstice). Each day will now lose a certain amount of daylight. Do you know by how much? Is it seconds or minutes? Find out and let us know your results. Have a great day everyone.

Daily reading

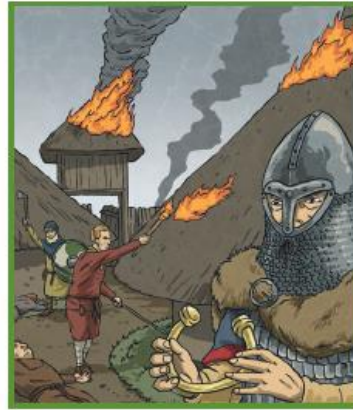
No doubt you are all eager to find out what the speed read is all about today. Well, wait no longer!

The Viking Times

We Have Arrived!

AD787

After an arduous journey across the North Sea, we have finally reached our destination – England. The feeble, afraid Englishmen tried to cease us but we were too powerful and fought our way, as brutally as was necessary, onto the green and lush land.



We are here to find treasures (and probably steal them) before we return to our homes in Norway, Sweden and Denmark.

Our first raid was of the monastery at Lindisfarne, which was not very well

protected and contained valuable goods like gold and jewels, imported foods and other useful materials for trade.

England is more pleasant and lucrative than we thought!

1. Which word means 'stop'?
2. Where did the Vikings come from?
3. Find two adjectives which are antonyms of each other.
4. How does the Viking's view of England change?

Daily times tables

7. Circle the modal verbs in the sentence below.

I can assure you that whatever happens, we will not make this mistake again.

9. This sentence is ambiguous. Rewrite the sentence below using commas to make the meaning clear.

In the picnic box I put bananas crisps lemonade sandwiches and biscuits.

Termly Spellings

Please take time to learn spellings for future weeks and to re-visit past spellings. These can be found on the school website at <https://www.newbridge.bathnes.sch.uk/> and go to the tab **Classes** and click on your class.

horribly
possibly
incredibly
terribly
responsibly

Using the words and writing them down are the best ways to learn them. Activities you could do are:

- Find the meaning of the words
- Put the words into sentences
- If there is a pattern, how many words can you find with the same pattern?
- Draw pictures of what the words mean with the word in the picture
- Create a word search
- Create a crossword
- Test your parent

Daily Maths

Recap:

Dad drives a truck. Last week he drove 267 miles on Monday, 186 miles on Tuesday and 198 on Wednesday. This week Dad drove 279 miles on Monday, 148 on Tuesday and 288 on Wednesday. What is the difference in mileage between this week and last week?



In the Candy room, the sweets are weighed and packaged so they can be sold. Sammy wants to know how many grams of sweets the machines weigh each week.



On Mondays, Tuesdays and Wednesdays, the machines weigh 10,774g of sweets each day. On Thursdays and Fridays, the machines weigh 8,192g of sweets each day.

How many sweets do the machines weigh each week?

Today's task:

We would like you to apply your knowledge about shape, space and measurement today. Do you remember when we made boxes for our sweets during Maths Day in Term 3? Well, we would like to do something similar today. We want you to find an object in the house that needs to be wrapped up in a box.

It could be food or a toy, maybe some jewellery or you may have a present to give someone, you can choose.

You will need the following things:

A ruler

Some scissors

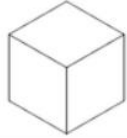
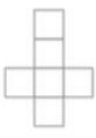

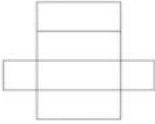
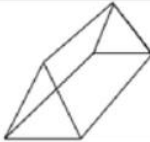
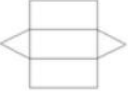

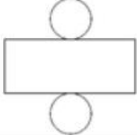
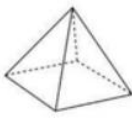
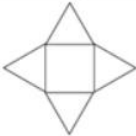
Glue or Sellotape

Cardboard or strong paper

A pencil

Something to decorate the box

Then, you will need to decide the best shape for your box and make a net with tabs. Think about the measurements, so that it is big enough to hold the item you have chosen.

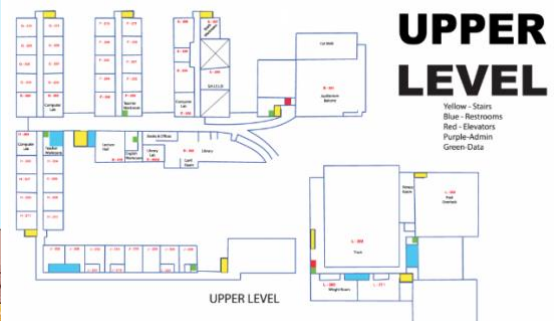
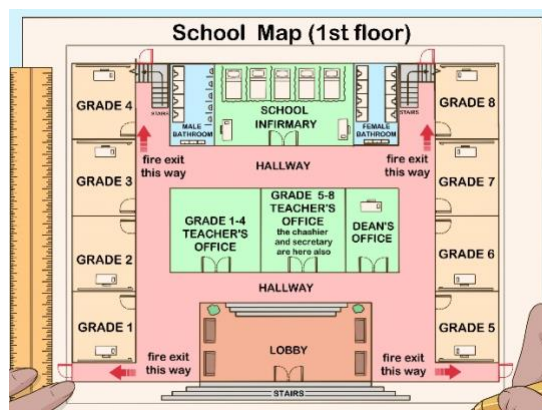
Cube		
Cuboid		
Triangular Prism		
Cylinder		
Pyramid		



We look forward to seeing the finished product. You never know - this could be a new company for you.

Daily English

A Map of Newbridge Upper School



Year 2 will need to know their way around the Upper School so to support them in September, we would like you to draw a map of the Upper School including everything they need to know.

Names of classrooms
Toilet areas
Cloakroom areas
Playgrounds
PE shed
Play Pod
Office space

You could include a key; think about the symbols you could use or label each room directly within the map. Adding colour will help them find their way around. Remember to use a ruler to make it look neat and easy to read.

Enjoy, Year 5!

Healthy Me

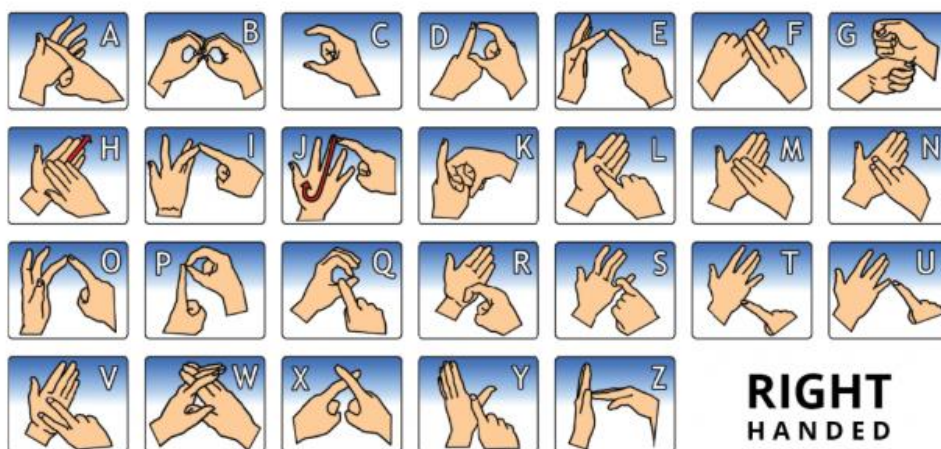
Learn to communicate through sign language:

Fingerspelling is a method of spelling words using hand movements.

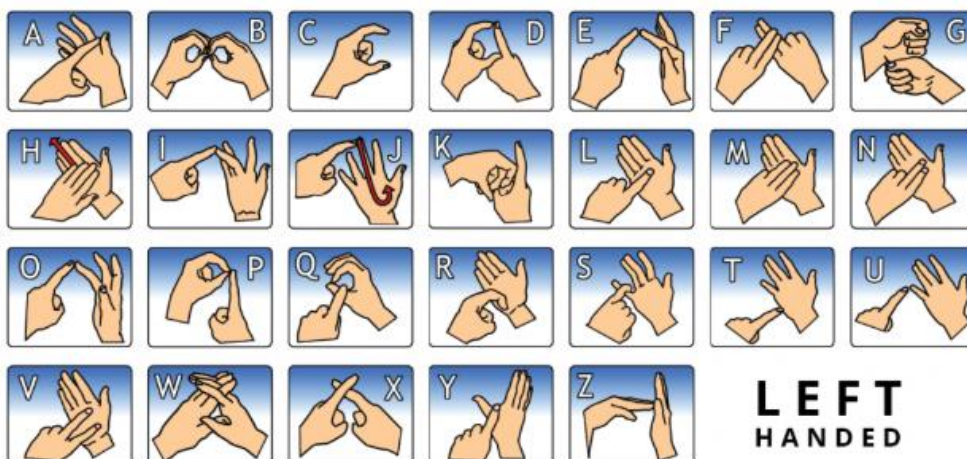
The fingerspelling alphabet is used in sign language to spell out names of people and places for which there is not a sign. Fingerspelling can also be used to spell words for signs that the signer does not know the sign for, or to clarify a sign that is not known by the person reading the signer.

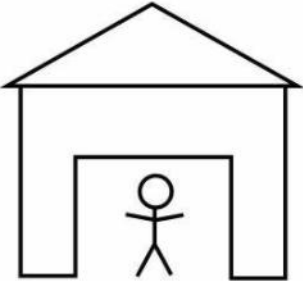
Why not learn how to spell your name and that of your family members.

BRITISH SIGN LANGUAGE - FINGERSPELLING



BRITISH SIGN LANGUAGE - FINGERSPELLING



Problem of the Day	<p style="text-align: center;"> Can you copy the image below without ever lifting your pen from the paper? (it <i>is</i> possible!) </p> 	
---------------------------	--	--

The activities below are supplementary and can be used to further extend learning opportunities whilst at home.

Home Learning	<p>Please look at your Home Learning grid. Visit the school website at https://www.newbridge.bathnes.sch.uk/ and go to the tab Classes and click on your class.</p> <p>Please plan and complete these activities throughout the duration of the school closure.</p>
National Curriculum Word Lists	<p>Look in your Reading Log and find all of the spellings for your year group. How many of these can you learn? Use the strategies listed at the top of the page.</p>
Curriculum Overview	<p>Take time to look at the Curriculum Overview for your year group. This can be found on the school website at https://www.newbridge.bathnes.sch.uk/ Go to the tab Key Information, go down the menu on the left hand side to Curriculum, go to Termly Overview and click on the one for your year group.</p> <p>Talk to a grown up at home and decide on an aspect you would like to find out more about. This means that when you come back to school, you will be able to share something new.</p>
Useful websites	<p>Please see the useful websites list.</p>

Well done for trying all of these areas of learning. Please can I ask that your parent sends a few lines in an email to let me know what you have completed today.

5B: 5b@newbridge.bathnes.sch.uk **5H:** 5h@newbridge.bathnes.sch.uk

Please look out for tomorrow's learning, from Mrs Bartlett and Mr Handson