

NPSA NEWS

A Message from the Committee

We've finally made it to the end of this extraordinary term – hooray! From a fundraising point of view, we started in September with high hopes but limited expectations: we desperately needed to try and make up for a lack of fundraising over the spring and summer, but we knew that we would have to be creative in finding ways to do it, and we recognised that the pandemic had hit a lot of people hard financially as well as in other ways, so we really didn't know what might be possible. Well, Newbridge, you showed us. Together we have raised an extraordinary £8,590: £6,821 from events and activities, as well as £1,690 from matched giving, and £79 from Amazon Smile & The Giving Machine. You are phenomenal. THANK YOU and Merry Christmas!

Christmas Raffle

Our first online Christmas raffle raised a staggering **£1,972!** The winning numbers were drawn on Monday and the winners are listed below. Thank you to everyone who bought tickets, and congratulations to our lucky winners!

Raffle winners: Emma Puzey; Miriam Wharf; Sarah Smith; Louise Broom; Will Giles; Lesley Goode; John Dimberline; Amie Touhy-Barter; Phil Ennor; Owen Thornton; Kristina Chapman; Lorna Jackson; Amy Swinburne-Goode; Katherine Wellings; Rachel Rogers; Jean White; Jennie Attah; Antoni Salamon; Carole Bayliss; Alfonso Caso; Kirsty Button; Janet Slade.



100 Club

The first draw of our new 100 Club takes place on 6th January. Everyone who applied and set up a standing order in time has now been notified, so you know if you're in the draw (do check your junk mail if you think you should have received a message from us and haven't). If you missed out this time, but would like to

be included in February's draw, please contact us at npsabath@gmail.com with '100 Club' in the subject line, and we'll send you a link to the application form. If you've applied and been allocated numbers, but not yet set up your standing order, please email us and we'll let you know what to do.

Winter Windowland

To all our windowmakers: this is where we run out of superlatives. Your creativity, commitment and community spirit have totally blown us away. We've been told that we're better than Stourhead, Westonbirt and Longleat, our hot chocolate is the best ever, and many people have said that this event brought tears to their eyes. Truly, you are all amazing. Thank you.

And, errrr... thanks for making the job of picking winners REALLY, REALLY difficult. So difficult, in fact, that we had to ask the lovely Neil Clews and the team at Anglepoise if we could please have a few more prizes, because we simply could not narrow it down to three winners. **So below and on the next page you will find SEVEN winners** in our entirely-made-up categories. But honestly, we'd love to give every single one of you an award – you were all brilliant.

As well as our wonderful windowmakers, we need to say thank you to: everyone who made a donation; our friends at Emmanuel Church for organising the horsebox; everyone who took part in the trail and contributed to the lovely atmosphere; to Pascale Dilger for the beautiful map; to Neil Clews and Anglepoise lamps for the prizes; and finally to Winkworth Estate Agents for their sponsorship of this event.

Altogether Winter Windowland has raised £1,250*. See you next year?!

**so far – you can still donate [here!](#)*

The winners!



Liz Rayner – “Artistic Achievement”



Louise Slowgrove – “Festive Feelgood Factor”



Ros Hopwood – “Scissor Skillz”



Rachel Rogers –
“Original Idea”



Hannah Cheek – “Community Window”

Challenge 21

As you'll know from Ms Kennaugh's message last week, as well as the NPSA newsletter, this exciting new event launches at the start of the new year.

During the month of January we will be inviting everyone in school, and all our families, to blast their way into 2021 by completing a challenge related to the number 21. We want to



use this as a way to put 2020 behind us and start the new year in the most positive way that we can.

The challenge could be related to learning, to mental or physical wellbeing, to a hobby, or to something in the local community... it is up to each child to come up with their own challenge. It would be great to see family members

getting involved too, or perhaps families enjoying a joint challenge and seeing who does the best!

- ***How about walking 21km in a week, or cycling 21 miles in a day?***
- ***Or reading for 21 minutes every day for a week?***
- ***Or picking up 21 pieces of litter in your local area?***

We'd love it if every child took part, even if not everyone chooses to be sponsored, and came up with a challenge. We know lots of the staff plan to get involved too, and we're excited to share your efforts in the newsletters next year.

Our fundraising target for this event is £2,021 – approximately £5 per child. We'll share a link to a sponsorship form and details about how to transfer money in the new year. For now, you just need to come up with those challenges.



2021

The first NPSA meeting of the new year will be held via Zoom in early January. We'll send the details out via class reps at the start of term. Please do come along if you can.

We have a couple of new ideas in the pipeline, and we're looking at ways to adapt some of our usual events so they can work in a socially-distanced way, but we'd really love to hear about any ideas you have for the new year. If you'd rather send an email than join the meeting, please contact the Committee at npsabath@gmail.com

Free money for the NPSA

When you dash online to buy that last-minute present, please don't forget to use Amazon Smile or The Giving Machine so you can raise money for the NPSA at the same time!



For Amazon Smile, simply go to smile.amazon.co.uk or shop with AmazonSmile ON in the Amazon shopping app, and Amazon will make a donation to the NPSA.

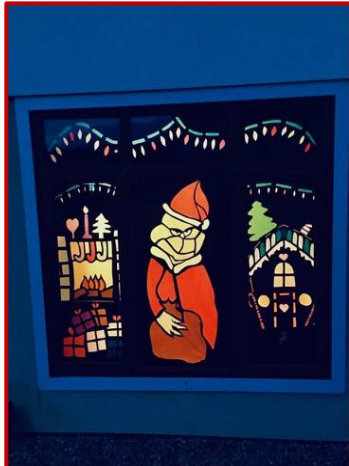


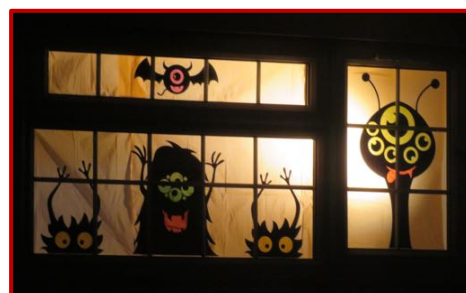
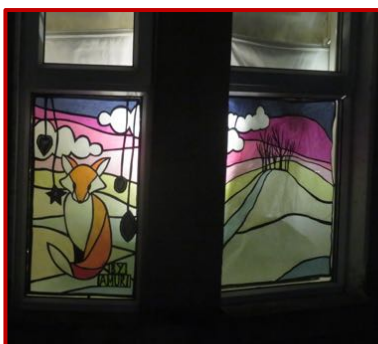
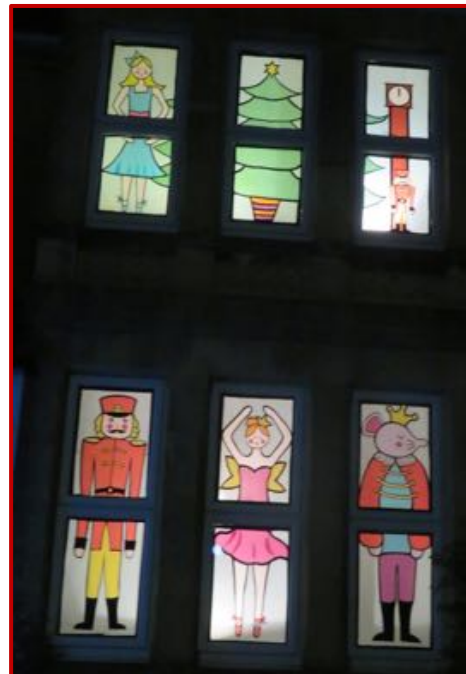
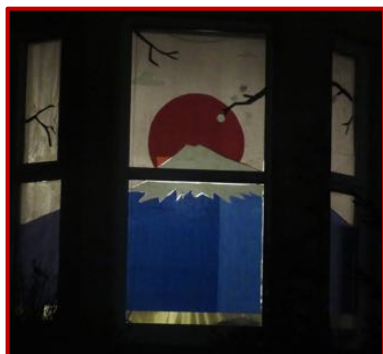
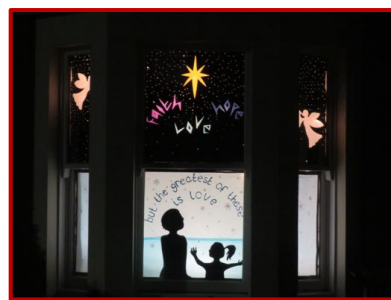
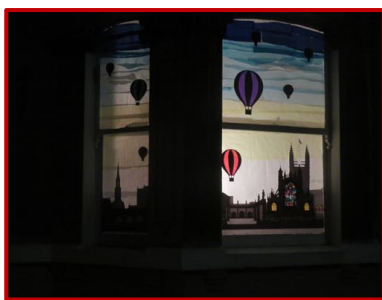
If you're shopping with other retailers, including Argos, M&S, Etsy, H&M (and lots more!), you can support the NPSA by starting your shopping from our Giving Machine page [here](#), and a percentage of what you spend will come directly to the NPSA, without costing you a penny extra.

Winter Windowland highlights

On the next two pages are just some of the wonderful designs on display during Winter Windowland. There will be more photos on the NPSA website soon too. If you didn't get round to donating during the event, you can still do that [here](#) or scan the QR code on the right. Thank you.







Find us on social media

Instagram: @newbridgenpsa_bath
Facebook: @NewbridgeNPSA
Twitter: @Newbridge_NPSA