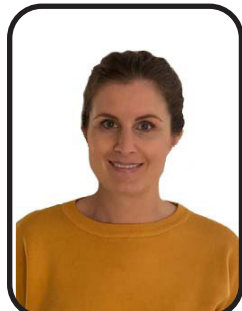


Our Teachers



Mrs Titchener 2T



Miss Young 2A

Requests for help

If you would like to volunteer to help in school, please contact the office for details on DBS checks.

Newbridge Primary School

LEARNING IN YEAR 2 TERM 5 2021-2022

The start of the school day

All pupils need to be in the classroom by 8:55am and can come in from 8:45am.

Please make sure your child knows their lunch choice each day.

If for any reason you are late bringing your child to school, please proceed to the office and sign them in.

If your child is ill, please contact the office on each day of absence.

Remember that if someone else is collecting your child, please email the office with details.

Equipment your child needs every day

- A filled water bottle, book bag, reading book, reading log, PE kit, coat.
- School uniform (in line with the school code of dress).
- A packed lunch, if your child usually has one.
- Please ensure all personal items are named.

Our Teaching Assistants



Miss Auld



Mrs Hill



Mrs Clarke

Upcoming Dates

Forest School
2T starting Tuesday 1st March
2A starting Tuesday 8th March

Please find a link to the [NATIONAL CURRICULUM](#)

LEARNING IN YEAR 2 - TERM 5 2021-2022

English

Spelling, punctuation and grammar work:

- Suffixes -ful, -less, -ly
- Words ending in -tion
- I sound spelt 'el'
- Adding suffixes to words ending in 'y'
- I sound spelt 'll, 'or' sound spelt 'ar' after 'w'
- Spelling Y2 common exception words.
- Capital letters and full stops.
- Subordination (using when, if, that, because) and co-ordination (using or, and, but, so)
- Expanded noun phrases for description and specification [for example, the huge, dreadful flames]
- Making simple additions, revisions and corrections to their own writing by evaluating their writing with the teacher and other pupils.

Writing:

- Write simple, coherent narratives about personal experiences
- Using present and past tense
- Forming lower-case letters of the correct size relative to one another.
- Starting to use some of the diagonal and horizontal strokes needed to join letters and form lower-case letters of the correct size relative to one another.
- Exploring the features of instructions
- Writing and sequencing instructions

Reading

- 'George's Marvellous Medicine' By Roald Dahl
- Making a revolting medicine based from our text
- Forming character descriptions
- Writing in first person
- Writing a diary

History

- No History covered this term.

Art

- Botanical drawing – still life drawings and close up pastel drawings of fruit
- Picasso inspired artwork
- Photography
- Drawing from observation indoors and out.
- To be introduced to a range of mark making and painting tools including pencils, pens, crayons, charcoal and oil pastels, watercolours and ready mixed paints.
- To be encouraged to draw themselves, their peers, as well as inanimate objects.
- Introduce to drawings by famous artists.
- To develop confidence using colour, pattern, texture, line, space and form.

Physical Education

- Striking and fielding.
- Mini games
- Real PE skills

Science

- Observe and describe how seeds and bulbs grow into mature plants
- Find out and describe how plants need water, light and a suitable temperature to grow and stay healthy.
- Explore the requirements of plants for germination, growth and survival, as well as to the processes of reproduction and growth

Computing

- E-safety
- To use and combine a variety of software on a digital device (using an iPad to create stop motion videos of plant growth)

Religious Education

- No RE covered this term

PSHE

- Healthy me

Music

- Performing/notation
- Charanga – Zootime (playing instruments and exploring a song)

Geography

- Looking at where our food comes from around the world
- I know that the world is split into seven continents
- I can locate Europe on a world map
- I can describe some of the geographical features and characteristics of France
- I can locate Asia on a world map
- I can identify China on a world map
- I can identify and describe some of the features and characteristics of China
- I can locate Australia on a world map
- I can know that Australia is a country and a continent
- I can identify and describe some of the features and characteristics of Australia
- I can locate Africa on a world map
- I can identify Kenya on a world map
- I can identify and describe some of the features and characteristics of Kenya

Our Newbridge Journey

Our enquiry is: 'Plant It, Grow It, Eat It – Where does my food come from?'

This means we will be learning about: Different types of food and where they come from.

The Key Skills we will be developing are:

- I am curious about new things and ask questions to find out more information. (who, what, when, where, why and how).
- I can use resources carefully and look after our environment.

Mathematics

Fractions - Working with parts and wholes

- Making equal parts
- Recognising and finding a half
- Recognising and finding a quarter
- Recognising and finding a third
- Unit and non-unit fractions
- Recognising and finding a three quarters
- Counting in fractions
- Problem solving with fractions.

Time

- Telling time to the hour
- Telling time to the half hour
- Using O'clock and half past
- Using Quarter past and quarter to
- Telling time to 5 minutes
- Writing time
- Hours and days
- Finding durations of time
- Comparing durations of time.

Arithmetic

- Revising taught strategies of all four operations.
- Reasoning and problem solving to challenge

Design Technology

- Planting and growing a Mr Greenhead.
- Using the basic principles of a healthy and varied diet to prepare dishes.
- Understanding where food comes from.
- Exploring and evaluating a range of existing products.
- Designing a balanced, healthy pizza.

Home Learning

- Daily Reading
- Weekly spellings
- Counting in 2s, 3s, 5s and 10s forwards & backwards
- 2, 5 and 10 X tables and division facts
- DoodleMaths
- DoodleEnglish

Curriculum Support

- Additional individual phonics support for identified children (Toe by Toe)
- 1:1 reading for identified children (volunteer support required)
- Times tables support (volunteer support required)
- Learning to tell the time (volunteer support required)

British Values

- Class Ambassador, School Councillor (Citizenship).
- Tolerance of other faiths and beliefs.
- Responsibility and respect.