

NEWSLETTER

www.newbridge.bathnes.sch.uk
Tel 01225 421675 / 421620

Follow us on Twitter
 @NewbridgePri

Issue 1.01 10.10.21

Tuesday 14/09/21

- Y2 Forest School for **2A**

Wednesday 15/09/21

- Y4 Forest School for **4B**

Tuesday 21/09/21

- Y2 Forest School for **2T**

Wednesday 22/09/21

- Y4 Forest School for **4KR**

Monday 27/09/21

- Clubs start

Tuesday 28/09/21

- Maths & Reading Meetings for Parents at 2pm and 6pm in school
- Y2 Forest School for **2A**

Wednesday 29/09/21

- Y4 Forest School for **4B**

Tuesday 05/10/21

- Y2 Forest School for **2T**

Wednesday 06/10/21

- Y4 Forest School for **4KR**
- Parents' Evening via SchoolCloud

Tuesday 12/10/21

- Y2 Forest School for **2A**
- Parents' Evening via SchoolCloud

Wednesday 13/10/21

- Y4 Forest School for **4B**

Tuesday 19/10/21

- Y2 Forest School for **2T**

Wednesday 20/10/21

- Y4 Forest School for **4KR**

Friday 22nd October

- End of Term 1

Friday 10th September, 2021

Dear Parents and Carers

I hope you have enjoyed seeing the children return to school. There is so much to celebrate, both in terms of how the children have returned, but also the sense of normality we are all able to feel. The children look so happy and have seemingly taken all of the changes in their stride, which is just brilliant. They have enjoyed being able to mix with other year groups at playtime and, with this, wider opportunities will open for the children to hold roles and responsibilities as they used to. Being able to have all of the children eating their lunch in the dining halls has also been a real hit; the children are loving the social aspect this brings and the more extensive menu now available. We have held assemblies throughout the week and these have served as precious moments in bringing the school together - our Year 1 pupils have never been to an assembly and all other children have not attended one since March 2020, so these occasions were very special for everyone. And then, seeing parents around the site at the end of the day has also breathed life back into the school and our community - many parents have told me how much they have missed this.

Our Early Years children and their families deserve a very special well done and welcome. You will know that for this cohort, no visits to the school could be made before starting, except for last Friday. All correspondence has been digital and therefore not being able to come into school must have been so difficult. That said, the new Bee and Ladybird Class children have been absolutely remarkable and have taken this week in their stride. I have had the great pleasure of having had all of the children squeeze into my office to say hello - something that couldn't happen last year at all.

All of this makes for the best start to the term and year we could have hoped for, and it gives us all so much hope for better times ahead.

New families

Whilst our Reception children have started, we have also welcomed new children to classes across the school. Louis has joined 1R, Carla and Afek have joined 2T, Chelsea has joined 3OG, Amelie has joined 4B, Lillie has joined 5G and Nancy and Segev have joined 5HT. We hope that the children and their families will be very happy in our school community.

New staff

We also have a number of new staff members who have commenced work since the start of term. Mrs Woolley, Mrs Foulds, Mr Burton and Mrs Stock have been appointed as teaching assistants and Mrs Best has been appointed as our Music teacher for Key Stage 2. We offer them each a very warm welcome to our school.

Google Classroom 'Blogs'

Please know that all class teachers, from today, will be posting a short 'blog' on their Google Classroom Stream on a Friday. Google Classroom has proved to be a brilliant aid over the past year and I want to ensure it is still utilised as a platform for sharing information. Dipping into Google Classroom each week will also remind families how to access it, should we ever need to revert to this for supporting learning. The teachers will provide an overview of the week, with photographs and any necessary reminders. With this, there will be less photographs in the newsletter, celebrating school life.

Back to school information and school website

Next week, teachers will issue parents with information about the routines in each year group and the curriculum areas being taught. This will be uploaded to the school website, for each class and can be found at <https://www.newbridge.bathnes.sch.uk/classes>

Peripatetic music lessons and extra-curricular activities

We will be offering both peripatetic music lessons and extra-curricular activities, shortly. Details about the B&NES Music Service lessons have already been sent to parents and these are available to children from Year 3 upwards. Details of the extra-curricular activities will be issued in due course and we hope for these to commence in the week beginning 27th September.

Letter sent Monday 30th August, 2021

For information about all of the routines and procedures from the start of this term, please refer to the letter sent to you on Monday 30th August. This can also be found at <https://www.newbridge.bathnes.sch.uk/school-life/newsletters>
All information is in line with current government and Public Health guidance. However, also in line with the guidance, if we find, as a school, we have met threshold infection rates which indicate we need to reverse some of our measures, will we do so in conjunction with Public Health advice.

Guidance for your reference

You may wish to refer to the full government guidance about the return to schools.

[Schools COVID-19 operational guidance](#) (updated 27th August 2021)

[What parents and carers need to know about early years providers, schools and colleges during COVID-19](#) (updated 17th August 2021).

Below, are some of the main points in relation to contact tracing, what to do in the event of displaying symptoms testing positive for Covid-19 and attendance in school.

Close contacts of a positive case of Covid-19 in education settings

Individuals are not required to self-isolate if they live in the same household as someone with COVID-19, or are a close contact of someone with COVID-19, and any of the following apply:

- they are fully vaccinated
- they are below the age of 18 years and 6 months
- they have taken part in or are currently part of an approved COVID-19 vaccine trial
- they are not able to get vaccinated for medical reasons

Close contacts will now be identified via NHS Test and Trace and we are no longer expected to undertake contact tracing. NHS Test and Trace will work with the parent of the positive case to identify close contacts. Contacts from a school setting will only be traced by NHS Test and Trace where the positive case and/or their parent specifically identifies the individual as being a close contact. This is likely to be a small number of individuals who would be most at risk of contracting COVID-19 due to the nature of the close contact. NHS Test and Trace will advise all identified close contacts to take a [PCR test](#).

The school will continue to work with health protection teams in the case of a local outbreak. If there is a substantial increase in the number of positive cases in school or locally, or if central government offers the area an enhanced response package, Public Health might advise the school to temporarily reintroduce some control measures.

Testing when an individual develops symptoms of Covid-19

The most important symptoms of COVID-19 are recent onset of any of the following:

- a new continuous cough;
- a high temperature and/or
- a loss of, or change in, your normal sense of taste or smell (anosmia).

When an individual develops COVID-19 symptoms or has a positive test, pupils, staff and other adults should follow public health advice on [when to self-isolate and what to do](#). They should not come into school if they have symptoms, have had a positive test result or for other reasons requiring them to stay at home due to the risk of them passing on COVID-19 (for example, they are required to quarantine). If anyone in school develops [COVID-19 symptoms](#), however mild, they will be isolated and parents will be contacted to arrange collection. For everyone with symptoms, they should avoid using public transport and, wherever possible, be collected by a member of their family or household. The household (including any siblings) should follow the PHE [stay at home guidance for households with possible or confirmed coronavirus \(COVID-19\) infection](#).

Confirmatory PCR tests

Pupils with a positive LFD test result should self-isolate in line with the stay at home guidance for households with possible or confirmed coronavirus (COVID-19) infection. They will also need to [get a free PCR test to confirm if they have COVID-19](#). Whilst awaiting the PCR result, the individual should continue to self-isolate.

If the PCR test is taken within 2 days of the positive lateral flow test, and is negative, it overrides the self-test LFD test and the pupil can return to school, as long as the individual doesn't have COVID-19 symptoms.

Attendance

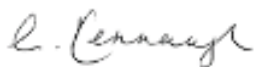
School attendance is mandatory for all pupils of compulsory school age and it is a priority to ensure children attend school regularly and are punctual each day.

Where a child is required to self-isolate or quarantine because of COVID-19 in accordance with relevant legislation or guidance published by PHE or the DHSC, they will be recorded as code X (not attending in circumstances related to coronavirus). Where they are unable to attend because they have a confirmed case of COVID-19 they will be recorded as code I (illness).

We must fully understand the reason for any absence, and this must be telephoned into the school office before 9.30am. Any absence not reported will be recorded as unauthorised.

Thank you, all, for enabling the children to be ready for their new year and for supporting our requests to follow all of the revised procedures, this is greatly appreciated.

Have a lovely weekend.



Gill Kennaugh

STARS OF THE WEEK



Bee Whole Class

1EO Teddy T & Arthur C

2T Leona K & Charlie R

3OG Maddie H & Rhed M

4B Imogen B & Zoe M

5G Lillie B & James W

6B Marlie G & Noah H

Ladybird Whole Class

1R Alix M-C & Leo T

2A Jacob H & Khadeja K

3C Amira A & Reuben T

4KR Imogen G & Jake A

5HT Amity C & Lyess G

6H Ellie M & Ben E



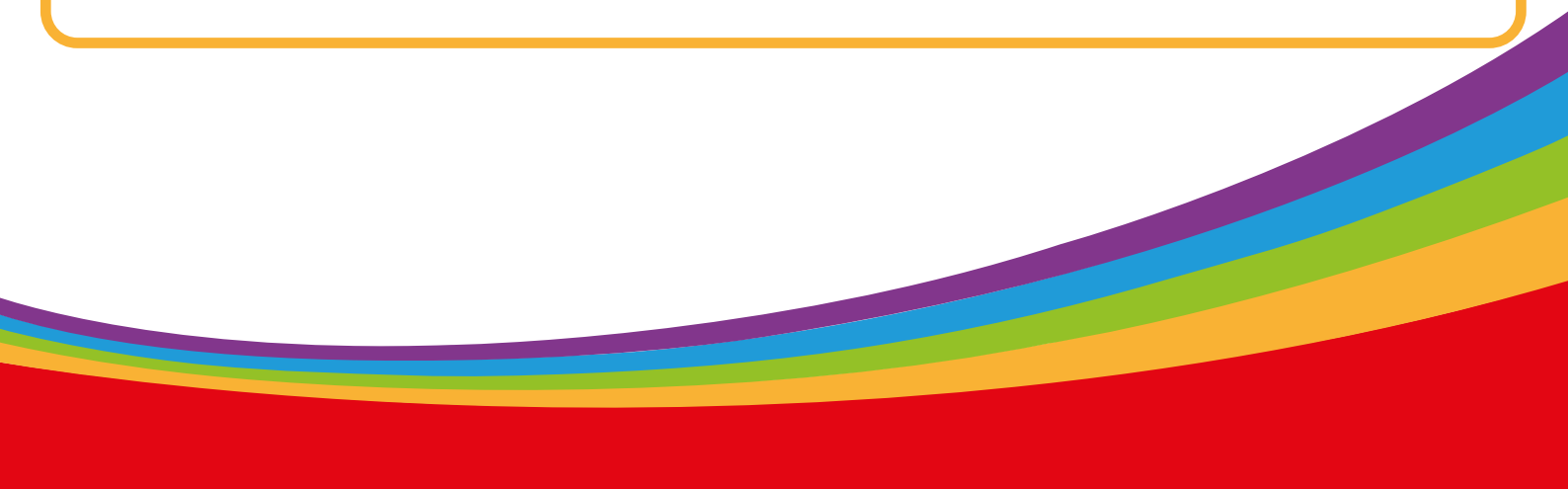
CURRICULUM CORNER

Super Spellings

Head outside to practise your spellings this week! Use chalk to write out your spellings on the floor - can you use a **different colour** to **highlight** the **spelling pattern** you're learning?

You could also use sticks, leaves or even conkers to create the words.

We would love to see any photos of your spellings created outside!



WELCOME BEE & LADYBIRD CLASSES





SCHOOL LIFE THIS WEEK





Once again, we are working on fostering a love of reading throughout the school. To this end, we have chosen six books that we would like every child to read or have read to them over the year. These books have been carefully chosen by their class teachers and it is hoped that every child will, by July, have read every one. (There are copies of each of these books in the classrooms)
Thank you very much for your anticipated support!

The English team



FOUNDATION STAGE

The Day the Crayons Quit by Drew Daywalt

Jack and the Flumflum Tree
by Julia Donaldson

Welcome Home Bear by Il Sung Na

Triangle by Mac Barnett and Jon Klassen

Penguin Problems by Jory John and Lane Smith

The Gigantic Turnip
by Aleksei Tolstoy and Niamh Sharkey



YEAR ONE

Where the Wild Things Are by Maurice Sendak

Man on the moon (A Day in the life of Bob)
by Simon Bartram

Funny Bones by Janet and Allan Ahlberg

Dogger by Shirley Hughes

Lost and Found by Oliver Jeffers

Seasons come, seasons go, Tree
by Britta Teckentrup



YEAR TWO

All Kinds of People by Emma Damon

The Great Fire of London: 350th Anniversary of the Great Fire of 1666
by Emma Adams & James Weston Lewis

How to Catch a Star by Oliver Jeffers

The Polar Bear by Jenni Desmond

It Starts With a Seed by Laura Knowles & Jennie Webber

A First Poetry Book
by Pie Corbett and Gabi Morgan



YEAR THREE

The Magic Faraway Tree by Enid Blyton

On Sudden Hill by Linda Sarah

Varjak Paw by S.F. Said

Ice Palace by Robert Swindells

Knights and Bikes by Gabrielle Kent

Billie and Minipins
by Roald Dahl



YEAR FOUR

The Great Elephant Chase by Gillian Chase

How to Help a Hedgehog and Protect a Polar Bear
by the National Trust

The Twits by Roald Dahl

Please Mrs Butler by Alan Ahlberg

Flotsam by David Weisner

Percy Jackson and the Lightning Thief
by Rick Riordan



YEAR FIVE

The Nowhere Emporium by Ross Mackenzie

The Astounding Broccoli Boy
by Frank Cottrell-Boyce

Wonder by R. J. Palacio

What a Waste by Jess French

Who Let The Gods Out by Maz Edwards

Harry Potter and the Philosopher's Stone
J.K. Rowling



YEAR SIX

The Boy Who Flew by Fleur Hitchcock

**Ancient Warriors
by Iris Volant and Joe Lillington**

Pax by Sara Pennypacker

Rooftoppers by Katherine Rundell

Hidden Figures by Margot Lee Shetterly

**When Hitler Stole Pink Rabbit
by Judith Kerr**



Oldfield RFC

www.oldfieldrfc.com

Mini's & Youth Rugby For Boys & Girls
FUN for U6/U7/U8 Tag
& U9-U14 Contact



Training every Saturday
morning 9.30-10.30 (u6-u11)
during school term time only,
and regular fixtures on
Sundays!

Coaches & Info

Enhanced DBS Checked

Each age group has a
RFU licensed coach

Signed up to kids first
age grade rugby

Qualified First Aiders

Dedicated Child
Safeguarding Officer



Situated on Shaft Road, Bath, BA2 7HP

**Modern Clubhouse facilities with ample
parking & excellent pitches**

Hot and Cold refreshments available

BT Sports on Big Screen

Free WiFi



Contact our Youth Coaches for more info:

Jase Humphries

Humph2@blueyonder.co.uk

07976 566 058

Lee Morris

leemorris431@gmail.com

07868 977 723

James Read

james.read@ayrtek.com

07917 669 222

Paul Tyrrell

paul.tyrrell@live.co.uk

07736 063910