



DATES FOR TERM 1

17th & 18th September

- Newbridge Arts Trail

20th, 22nd & 23rd September

- EYFS Settling in appointments

Monday 26th September

- Clubs start

3rd, 5th & 7th October

- Classrooms open to view books 3.20pm - 4.00pm

Tuesday 11th October

- Open Afternoon for Prospective Parents

Thursday 13th October

- Parents' Evening (Online)

Tuesday 18th October

- Parents' Evening (Online)

Friday 21st October

- End of Term 1

Monday 31st October

- INSET Day for staff

Tuesday 1st November

- First day back for children
- Open Afternoon for Prospective Parents

Dear Parents and Carers

The death of Her Majesty Queen Elizabeth II has hung over us all, this week. Again, the teachers have taken time to talk with the children, as appropriate, about the ceremonial events that have taken place, and will continue to do so, over the coming days. With this, the children have been really quite fascinated by the events and protocols, with many conversations about the succession of queens and kings – they recognise that these are historic times. As a mark of respect, and as shared earlier in the week, the school will be closed to all pupils on Monday 19th September, the day of the State Funeral.

School life is starting to get busy. Already we have been able to welcome visitors into school to enhance the children's learning and their curriculum. It is so positive that we can plan for normal times, something that is so greatly appreciated after three years of grave uncertainty.

A very warm welcome

This week, Erika has joined Class 1G, Anna has joined Class 2R and Zain has joined Ladybird Class. We offer them a very warm Newbridge welcome and hope they each will be very happy in our school community, along with their families.

Year 4 – Jonathan Jungle visits!

There was high excitement in Year 4, today, when some very special visitors made an appearance in the two classes. 'Jonathan Jungle' brought a range of creatures to share with the children including snakes, spiders and a praying mantis. It was a wonderful opportunity to 'get up close' and to explore more about animals, fitting with their year group enquiry 'How We Can We Help Our World?'. Hopefully, we can share photographs with you next week.

Year 6 – World War 2 explored

Year 6 enjoyed their first WOW day on Tuesday, for their enquiry 'How can we learn from the past?'. With a visit from Historic Workshops, they re-enacted many tasks from wartime, including putting out incendiary bombs and carrying stretchers. We value hands-on learning, and we are sure the children all valued this special day, too. More details of the visit, along with some photographs, are included further in the newsletter.

School Development Priorities

We are constantly working to improve our school, and made good progress against the School Development Plan priorities last year. Following reflective evaluation we have agreed our priority areas for development for this academic year. They are:

- Refining and promoting the Newbridge Curriculum and our wider opportunities offer;
- Strengthening the provision for disadvantaged pupils;
- Promoting reading for enjoyment, fluency and comprehension;
- Improving the teaching of phonics and spelling;
- Defining a mental health strategy, to support the health and well-being of pupils;
- Supporting staff to be most effective in their roles, and
- A continued focus on improving the school site and play opportunities.

Google Classroom 'blogging'

Again, today, you can tune into all that your child has been learning, by reading the class blog on Google Classroom. Your child's teacher will have written about the week's events and will have uploaded photographs taken this week. Reading the blog will allow for you to know what has been taught, so that conversations about learning can be continued at home. The teacher will also post any necessary reminders. We welcome engagement on the 'stream' from parents, so if you could leave a simple message, in response to the blog, we would love to hear from you.

Back to school information

On the school website you can find information pertaining to your child's class and their learning this term. Each class has published the curriculum content for the term, the spelling lists (if appropriate for the year group) and information about the routines in the class and year group this year.

These are available at <https://www.newbridge.bathnes.sch.uk/classes>.

Attendance and punctuality

Whilst good attendance is important, being on time for school is important, too. The school gates open at 8.45am and all children must be in their classrooms, for registration, by 8.55am. Beyond this time, a child is marked as Unauthorised, or Late. Coming into class on time supports all children to have a smooth start to their day, and allows for maximum learning time.

Extra-curricular activities

We will be offering extra-curricular activities from the week commencing 26th September. Details of these activities, and how to sign-up, were sent in an email on Wednesday 14th September. We greatly value wider opportunities, understanding that a range of skills can be developed through these activities. Again, we are offering clubs for no charge, to those children who are receipt of free school meals, eligible by benefit – please contact the office to discuss this further.

Home-Learning

As I mentioned last week, we are launching Doodle learning, again, this year. A letter with details of the expectations around this, and some changes we have made, will be sent to parents next week. Meanwhile, to prepare for access to Doodle, please read the required next steps, further in the newsletter.

Mini-Marathon Fundraiser

Mr Newman, our Year 6 teacher, is running the London Marathon in October. This has been a huge commitment, and we are excited to offer him our full support. Mr Newman is collecting sponsorship and will donate this to the school. He wishes for his efforts to inspire the children, and he has therefore set them a challenge, hoping they too can raise sponsorship. Any funds raised will be to support wider opportunities in school – and our dream, if ever possible, would be to one day have a school mini-bus, enabling more children to access more activities. A letter will follow about the details of the challenge, and meanwhile, we wish Mr Newman every success with the final stages of his arduous training.

Our NPSA – The Scarecrow Trail

Thank you very much indeed to all of those who took part in the Scarecrow Trail last Sunday. The weather was glorious, which meant many, many families were able to turn out to enjoy the walk and spot all of the scarecrows. The 'Amazing Animals' were spectacular; with everyone admiring the creativity, time and patience that had been required by many families. This event was not about fundraising, particularly, but more about providing an event for our local community to enjoy. Thank you to Vicki Hirst, who led on the organisation of this event – it's greatly appreciated.

The Newbridge Arts Trail

This weekend sees another trail. The Newbridge Arts Trail is back, having not taken place over recent years. As part of the trail, children's art work will be displayed in the Upper School Foyer and the Blue Room. You will also be able to view the work of three local artists. One of these is Mr Baigent, our former Art teacher. The Arts Trail is on Saturday and Sunday from 10.30am - 5.00pm and we hope as many of you as possible will come and see the work. Hopefully you'll also visit some of the other venues on the Trail, here is a link www.newbridgeartstrail.org

Gardening – Our School Allotment

We are very pleased to have received a couple of offers of help in the school allotment. Would you like to join in, too? Are you green fingered and have longed for your own allotment? We would really like to make the most of the allotment and for the community to be able to enjoy it. If you are interested in working towards this, with other parents and family members, please send an email to enquiries@newbridge.bathnes.sch.uk.

Open Afternoons for Reception children 2023/24

Looking ahead to our Reception intake for September 2023, please know, and share with friends, that our open afternoons for prospective parents will be held on Tuesday 11th October and Tuesday 1st November, 2022 at 1.30pm. To register interest in attending on one of these, please contact the school office at enquiries@newbridge.bathnes.sch.uk.

Email address for parents

For all correspondence, please can parents use the email address enquiries@newbridge.bathnes.sch.uk.

With best wishes



Gill Kennaugh

STARS OF THE WEEK



Bee Whole Class

1EO Clarice J & Isabelle C

2R Ada H & Amelie R

3OG Jem C & Ellie-Mae H

4B William B & Ruby E

5G Eloise O & Chloe W

6KR Joseph B & Nancy M

Ladybird Whole Class

1G Elizabeth B & Finn O'B

2M Louis L & Matilda S

3BA Khadeja K & Billy F

4T Edward S & Finley P

5HB Troy J & Albert C

6N Leonardo M-H & William S

Music Stars of the Week

Fern D & Jimmy L-A



EYFS

would welcome donations of the following resources:

TOY PRAMS/BUGGIES

A CLOTHES RAIL FOR DRESSING UP CLOTHES

If you can help with any of these resources, please
let the team know.

THANK YOU!



YEAR 4 Learning how to tie knots for hammocks in Forest School



YEAR 4 learning to locate rainforests on the globes



YEAR 6 World War 2 Workshop

On Tuesday, Year 6 were lucky enough to be visited by Danny from Historic Workshops. He took the children back to Britain in September 1940 - the time of 'The Blitz'. We all lived out the role of an ARP Warden and were able to support the effort by completing duties such as putting out fires using stirrup pumps, bandaging wounded soldiers and of course disposing of incendiary bombs that had fallen to the ground. Alongside this, the children also mapped out the timeline of World War Two and handled artefacts from history. This experience was one of a kind and certainly helped Year 6 answer their enquiry question - 'How can we learn from the past?'







DOODLE LEARNING

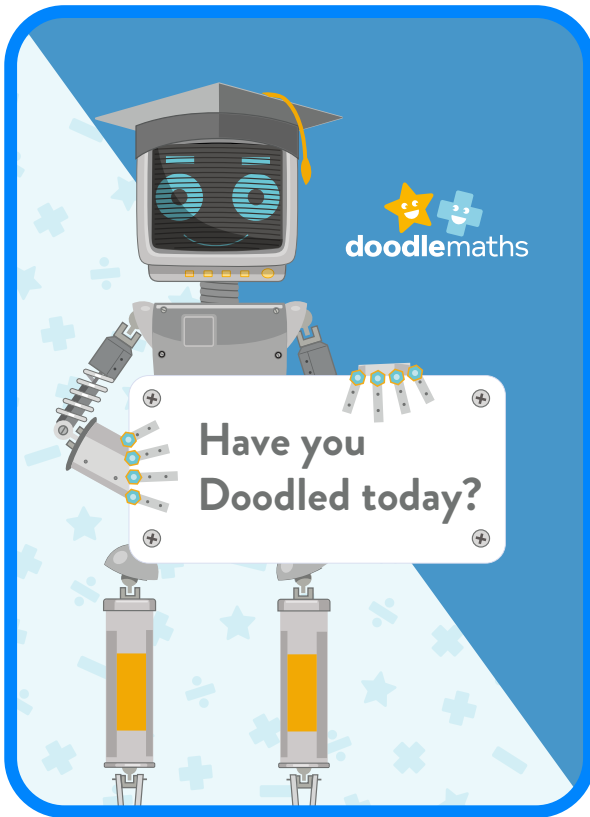
HOME LEARNING YEAR 1 TO YEAR 6

As indicated in last week's newsletter, we will be continuing with Doodle this year. More information will follow shortly, but in the meantime, please can you read and act on the following, to help us get going.

All Doodle accounts have been put in to the 'Baseline Assessment' mode. Your child will need to complete sets of questions at home to complete this. Doodle will then create a unique work programme tailored to each learner's strengths and areas for development.

Please encourage your child to work independently and to keep going, even if they find things a little challenging — this is simply Doodle's way of working out their strengths and what they need to work on.

Receiving help at this stage may cause their work to be incorrectly assessed, leading to the programme becoming too challenging.



| Doodle Learning | |
|-----------------|--|
| Username | |
| Password | |

The first home-learning assignment will be on **03.10.2022**

Thank you for your help.

Further information on Doodle baseline assessment can be found at:

<https://doodlelearning.com/post/new-feature-baseline-assessment-mode>

