

Monday 24th January

- Proposed date for clubs starting

Thursday 3rd February

- Bee and Ladybird Class trip to the Egg Theatre to see The Snow Mouse

Thursday 24th March

- Parents' Evening via SchoolCloud

Tuesday 29th March

- Parents' Evening via SchoolCloud

- Please note there will be no Forest School for Years 2 and 4 during Term 3



Dear Parents and Carers

Happy New Year. It has been lovely to see the children return to school this week and to happily settle back into the expected routines. I am sure, like all of the staff at Newbridge, you will be hoping for a settled year ahead. As I said at the end of Term 2, please know that no matter what we are presented with, be assured that we remain committed to providing the best possible opportunities and supporting the children to thrive during continued challenging times.

A warm welcome

This week, two children have joined our school. Ethan has been welcomed as a member of Class 4B and Audrey has been welcomed as a member of Class 1EO. We hope that both children will be very happy in our care and that their families will enjoy being part of the Newbridge community.

Visitors to support the curriculum

All of the classes have commenced their new enquiries this week. In Year 4 and Year 6, visitors supported the children's engagement in the new learning. Year 6 welcomed a beekeeper to launch, 'Why should we care about our planet?' and Year 4 met representatives from the Roman Baths, to investigate 'How did the Romans change Bath?'. To know about this term's enquiry, the curriculum content and the skills to be mastered in your child's class, please find the Curriculum Overview at <https://www.newbridge.bathnes.sch.uk/classes> Here, you will also find the termly spelling lists for Years 1 to 6.

Brilliant Newbridge citizens

Well done to Amelie, Georgie and Ada in Class 1EO who, after being inspired by last term's enquiry, 'How can we look after our planet?', wanted to pick litter in our local streets. Together, they collected two full bags and were so proud of their achievement. We are very proud of them, too, for being brilliant Newbridge citizens and for modelling our school values – well done!

Dogs are not permitted on site

Please can all owners note that dogs are not permitted on the school site, being walked or carried.

The Nativity and Upper School Festive Performances

In case you missed the links at the end of last term, please find the recordings of the Upper and Lower School festive performances on both Google Classroom and on the school website. For the website, follow <https://www.newbridge.bathnes.sch.uk/school-life/festive-videos> and enter starsoftheweek to view the Lower School Nativity performances. The Upper School performance does not require a password.

Extra-Curricular Activities

The clubs lists for Terms 3 and 4 are being drawn up and we hope, safety permitted, that these will commence in the week beginning 24th January, 2022.

Covid-19 Information and Revised Guidance

At the end of the newsletter, I have provided the school's up-to-date measures and the revised government guidance on testing, isolation periods and close contacts. Please use this to refer to for any queries you may have.

Email address for parents


To support the volume of emails we currently receive, for all parent communication, please use enquiries@newbridge.bathnes.sch.uk

Your child's weekly learning update on Google Classroom

Please remember to refer to your child's Google Classroom stream, to find out what has been happening this week.

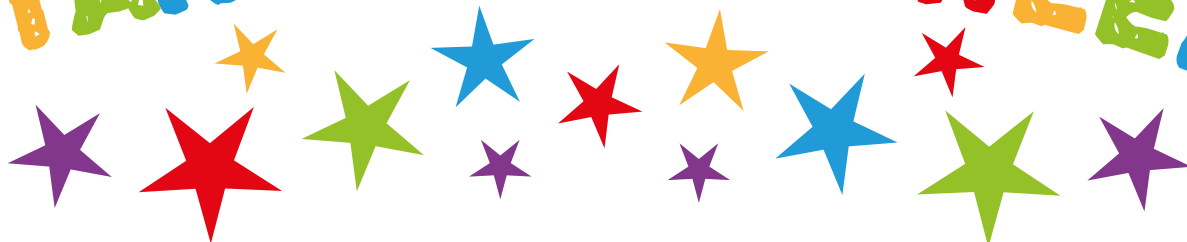
Have a lovely weekend,

With best wishes



Gill Kennaugh

STARS OF THE WEEK



Bee Bella C & Grace D
1EO Audrey B & Florence D
2T Amelie S & Emma R
3OG Grace W & Marley G
4B Alden R & Archie P
5G Hattie M & William S
6B Sydney W-H & Alice H

Ladybird Sophia A & Arlo B
1R Khaleesi M & William C
2A Jack T & Ioan H
3C Cerys L & Abigail B
4KR Scarlett W & Jake A
5HT Whole Class
6H Charlotte M & Sam W

Music Stars of the Week

Nancy M & Bess P



GOOD CITIZENS

Amelie, Ada & Georgie
 from 1EO
 litter picking



A VISIT FROM A BEEKEEPER

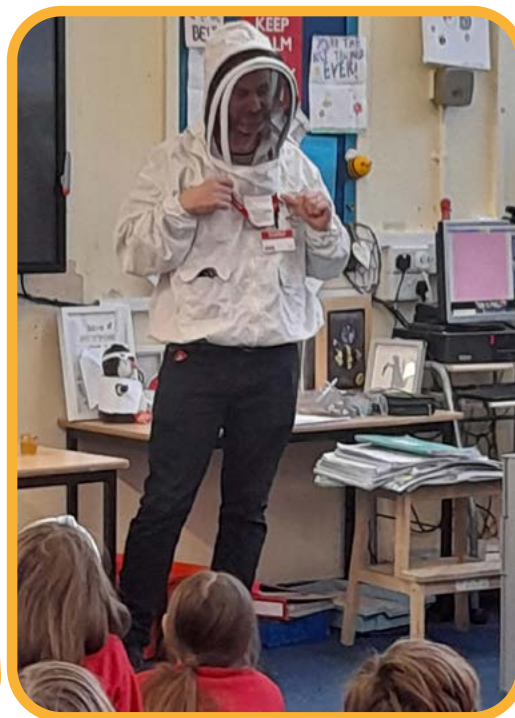
On Thursday, Beekeeper Owen Rogers came to give us talk about bees. He told us many interesting facts and described what it was like being a Beekeeper. Owen brought in a frame of wax to show us, which is made by the bees to make cells where they store the honey. He also brought in a jar of honey that had been made by his bees. It was starting to crystallise and he told us that it does this in colder temperatures. At the end we got to ask him hundreds of questions and he answered all with clear and interesting responses.

We all really enjoyed Owen's visit and learned so many new facts about the fascinating world of bees!

DID YOU KNOW?

- Male bees are incredibly lazy
- Queen bee can decide on the gender of her baby bees
- Bees have a secret spot in the sky where they go to mate and even scientists don't know where it is!

Written by Emma and Marlie



ROMAN WORKSHOP MORNING IN YEAR 4



Covid-19 information

Ongoing measures to mitigate against the transmission of Covid-19

You will likely know that the government has not applied any additional measures to primary schools and, therefore, we will continue with the measures as set out in the latter part of Term 2 and as published in the newsletter. Please know that safety remains a priority, as well as ensuring as many children as possible receive face to face teaching. At this stage, our staffing levels are adequate and we very much hope this will remain the case.

Below, I have listed the current measures, which will remain in place for the weeks commencing 10th January and 17th January. None of the measures set out will impact the children's education.

- There will not be any assemblies.
- Meetings with parents will be by telephone or via Zoom/Teams.
- All classrooms will be ventilated by windows being open. Children can wear additional layers.
- Hygiene messages will be promoted at all times. Staff will remind children about good handwashing routines and this will take place throughout the day, along with the use of hand sanitiser.
- Meals will be eaten in classrooms, except for EYFS, who will eat in the hall.
- The upper cloakroom use will be staggered by year groups.
- PE kits are to be worn on PE days. Full school uniform should be worn on other days.
- Classes will limit mixing indoors with the opposite year group class, when possible.
- Only two year groups will mix at playtime outdoors.
- For Breakfast Club, children will sit at tables by year group, whenever possible.
- For After School Club, upper and lower school children will be in separate spaces.
- Extra-curricular activities are not due to commence until w/c 24th January, and this date will be under review.
- All visitors to the school will be asked to wear a face covering.

Please can I remind parents of the following:

- Wrap around care should only be used when absolutely necessary.
- That a face covering should be worn when gathering at the gates and must be worn when entering the site.
- To distance from others when waiting to enter the site and when moving around the site, as much as possible.
- To seek a PCR test for yourself/your child when symptoms of Covid-19 are known.
- To test twice weekly with an LFD test when asymptomatic (also see further information below).
- To share with the office the outcome of your child's PCR test and that of a positive LFD test.
- To enter the Charmouth Road entrance on the right, and exit via the opposite gate. The vehicular gates will also be open to support the volume of parents leaving the site at drop off.

Self-isolation period explained

If you or your child test positive, the self-isolation period includes the day the symptoms started (or the day of the test, if there are no symptoms) and the next 10 full days.

If you or your child displays symptoms while self-isolating, the 10 days restarts from the day after the symptoms started.

When to stop self-isolating

Self-isolation can end after seven days if an LFD test is taken on Day 6 and Day 7 of the self-isolation period and:

- Both tests are negative
- The tests are taken at least 24 hours apart
- A high temperature is not presented

If completing an LFD test on Day 6 and the result is positive, wait 24 hours before completing the next test.

If self-isolation ends on or after day 7, children may return to school. This guidance applies to children under 5, with LFD testing at parental or guardian discretion. However, it's important that steps are taken to reduce the chance of transmitting COVID-19 to others. Therefore:

- Wear a face covering when/if you can
- Limit contact with [people at higher risk of serious illness from COVID-19](#)
- Follow advice on [how to avoid catching and spreading COVID-19](#)

Self-isolation can end after 10 days if either:

- you do not have any symptoms, or
- you just have a cough or changes to your sense of smell or taste – these can last for weeks after the infection has gone

When to keep self-isolating after 10 days

- If you/your child has a high temperature after the 10 days, or are feeling unwell, keep self-isolating and seek medical advice.

Confirmatory PCR tests to be temporarily suspended for positive LFD tests

From Tuesday 11th January, if you or your child receive a positive lateral flow device (LFD) result, the requirement is to self-isolate immediately, without the necessity to take a confirmatory PCR test. LFD tests are only taken by asymptomatic people. The positive LFD test result should be [reported on GOV.UK](#). After reporting the test result, you will be contacted by NHS Test and Trace.

Anyone who develops any one of the three main COVID-19 symptoms should self-isolate and take a PCR test. These are:

- **A high temperature:** any new, high temperature where your child feels hot to touch on their chest or back (you do not need to measure the temperature).
- **A new continuous cough:** coughing a lot for more than an hour, or three or more coughing episodes in 24 hours.
- **A loss of, or change in, sense of smell or taste:** a noticeable loss of smell or taste or things smell and taste different to normal.

Public Health Advice – Daily testing for close contacts of Covid-19

From Tuesday 14th December, there was a change in the action close contacts of Covid-19 should take. Once notified by Test and Trace or the NHS Covid-19 app that you, or your child (see eligible ages below) is a close contact, an LFD test should be taken each day for 7 days (or ten days since your last known contact with the person who has since tested positive for Covid-19, if this is earlier than the 7 days), and report the results via the Online Reporting System.

- It is advised that the daily LFD test is taken before leaving the house for the first time on that day and not within 30 minutes of eating.
- If a pupil tests negative, they should continue to attend school.
- If they test positive with an LFD, they should isolate **and not arrange a PCR test.**
- If they become symptomatic, they should isolate and arrange a PCR test.
- Daily testing is advised for all eligible contacts of a confirmed positive Covid-19 case whether Omicron or not.
- LFD kits for primary age children will not be supplied through school. Parents and carers are asked to acquire tests via their pharmacy, online or their community testing site.

Eligibility

The Government has introduced daily testing for close contacts of Covid-19 for those who are:

- Fully vaccinated (those who have had two doses of an approved vaccine or more)
- People who can prove they are unable to be vaccinated for clinical reasons
- People taking part or who have taken part in an approved clinical trial for a Covid-19 vaccine
- Children and young people aged 5 to 18 years and 6 months, regardless of their vaccination status.

Anyone over the age of 18 years and 6 months who is not vaccinated and not exempt, must isolate in line with Government guidelines if they are a contact of a positive case.

Under 5s

- Under 5s are exempt from self-isolation and do not need to take part in daily testing for contacts of COVID-19.
- They can continue to attend education or childcare settings.
- Under 5s who are a household contact are recommended to get a PCR test. They do not need to isolate while waiting for the results

Symptoms, testing and reporting

The outcome of all PCR tests and positive LFD tests, must be reported to the school office.

Please email enquiries@newbridge.bathnes.sch.uk with the subject heading **Covid-19 results**.

Face coverings in primary schools

Face coverings are worn by staff, adults, and those aged over 11 (including visitors) when moving around school and in communal areas. Health advice continues to be that children in primary schools should not be asked to wear face coverings.