

Tuesday 3rd May

- Forest School for 2A

Wednesday 4th May

- Forest School for 4B
- Year 3 Multi Skills Summer Festival at Oldfield School

Mon 9th - Thurs 12th May

- Y6 SATs Week

Tuesday 10th May

- Forest School for 2T

Wednesday 11th May

- Forest School for 4KR

Mon 16th - Fri 20th May

- Y6 Residential to Kilve Court

Weds 25th - Fri 27th May

- Y5 Residential to Great Wood

Dear Parents and Carers

I hope that you were able to enjoy the Easter holiday and the glorious sunshine. We all feel refreshed and ready for another positive term ahead.

Year 3 out and about

Year 3 set off on quite a trek on Tuesday. With much excitement and some apprehension at the uphill walk, all of Year 3, with their accompanying teachers, teaching assistants and volunteer parents, headed to Bath City Farm. They were given such a warm welcome and especially after the lack of visits due to the pandemic. In class, the children will be learning about what plants need to grow, and so all of the activities at Bath City Farm were linked to this. Clara said it was such a fun day and the best thing about it was seeing all of the animals, especially the furry pigs! Thank you very much to the parents who volunteered and supported the children to have such a wonderful learning opportunity.

Maths Rocks

You will know that all of the children painted a 'penguin pebble' to celebrate Maths Week and these were brought home so that you might leave them in an open space to be found. On the back of each pebble is inscribed MATHSROCKS@NewbridgePri so if anyone was to find one, they could tweet about it. We know that one has been found in Dublin. If your child has not hidden theirs, yet, please can I ask you to consider doing this to see if we hear about any more finds.

Year 4 – European Day

Thank you to the parents and carers of Year 4 for preparing the children in fantastic costumes on Tuesday for their European Day. This day was to launch their enquiry 'What makes a country unique?'. With games and food tasting, it was a fun day for all.

Doodle Homework

Please note that Doodle tasks are required to be completed, weekly, for school homework. If you are unable to log into these sites, please contact the office. Further in the newsletter, you will read more about this.

Curriculum Overviews

To know all about the aspects of the curriculum your child will be learning in Term 5, please see their class Curriculum Overview which is available on the school website at <https://www.newbridge.bathnes.sch.uk/classes>. You will also find the term's spelling lists here, for the relevant year groups.

Google Classroom

As well as knowing what is being taught over the course of the term, please read the weekly class blog on your child's Google Classroom Stream to find out the detail of this week's learning. These updates are informative and will support you in discussing your child's learning, at home.

Using the school library

It's great news that our school library is fully open to everyone. Please call in after school on any day where you will be able to borrow books or sit and read with your child. To find the library, please enter the Upper School via the front entrance, turn right into the Blue Room and exit the next door to enter the library. Sincere thanks to the volunteer parents who have very kindly offered to be available between 3.20pm and 4.00pm, to ensure this facility can be accessed.

Staffing Update

Mrs Seek retired from her role as a Teaching Assistant this week, following 20 years of service to our school. Throughout this time, she has demonstrated an outstanding commitment to supporting the needs of every child and has worked incredibly hard to support the teachers in their roles. Thank you, Mrs Seek, we all wish you the very best in your well-deserved retirement. Miss Cattrall has been appointed as a Teaching Assistant, in replacement, and we welcome her to the team.

Welcome

This week, Artem has joined Class 3OG, and we hope that he will be very happy at our school. Thank you to the members of the school community who have already greeted the family and made them feel so welcome.

REQUEST FOR A GUITAR

If anyone has a 3/4 size guitar they no longer need and would be happy to donate, please contact the school office.

Thank you

Email address for parents

For all parent communication, please use the email address enquiries@newbridge.bathnes.sch.uk

Changes to guidance for managing COVID-19 in education and childcare settings

When to come into school:

- Children with mild symptoms such as a runny nose, sore throat, or mild cough, who are otherwise well, can continue to attend their education or childcare setting.
- Children and young people who usually attend an education or childcare setting and who live with someone who has a positive COVID-19 test result, should continue to attend as normal.

When to stay at home:

- Children and young people who are unwell and have a high temperature should stay at home and where possible avoid contact with other people. They can return to the education or childcare setting when they no longer have a high temperature and they are well enough.
- Positive COVID-19 test result - if a child or young person has a positive COVID-19 test result they should try to stay at home and where possible avoid contact with other people for 3 days after the day they took the test. The risk of passing the infection on to others is much lower after 3 days, if they feel well and do not have a high temperature.
- Where there is a confirmed or suspected case of an infectious illness, education settings can take the decision to refuse a child if, in their reasonable judgement, it is necessary to protect other children and staff from possible infection.

Have a good weekend, and please remember that we are back at school on Tuesday 4th May.

G. Kennaugh

Gill Kennaugh



Bee	Oakley-Bay L & Martha D	Ladybird	Rose Y & Teddy O
1EO	Audrey B & Matilda B-J	1R	Albie S & Khaleesi M
2T	Alice S & Amelie S	2A	Otis H & Chloe G
3OG	Artem K & Chelsea L	3C	Jake S & Ava A
4B	Skye T & Fin A	4KR	Lynne A & Ella S
5G	Tharun P & Josh B	5HT	Felix T & Tommy W
6B	Felix K & Max F	6H	Charlie M-C & Megan T-B

Music Stars of the Week

Segev H & Mabel O'G



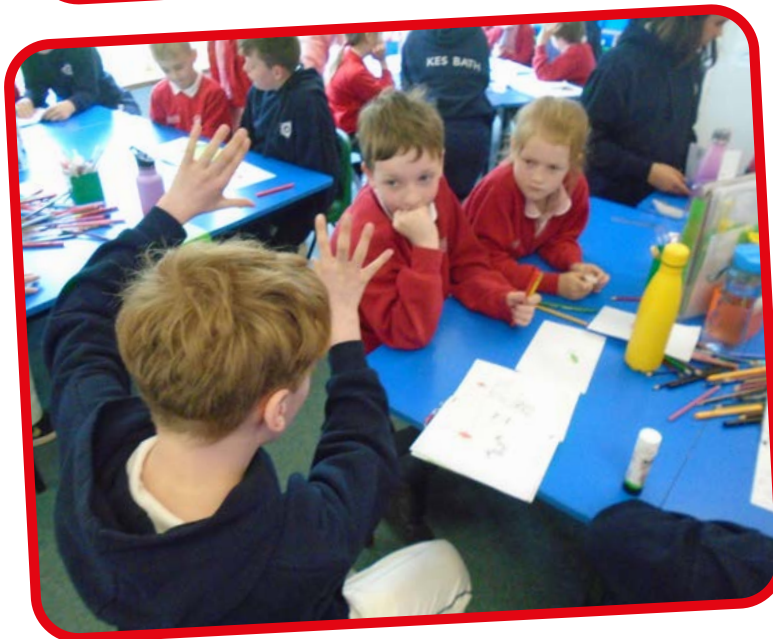
YEAR 1 TRIP

On Monday 4th April, we went to Westonbirt and first we went on the coach. Then when we arrived we met Samantha. Next we went on a beautiful walk. After that we went on a minibeast hunt. Finally we had lunch and went back on the coach. My favourite part was the mini beast hunt because we found 2 beetles.

By Phoenix

YEAR 2 READING VISITORS

A lovely group of Year 6 children from KES visited Year 2 on Thursday to share the picture books they had created. The Year 2 children loved asking questions and hearing the stories.



YEAR 3 TRIP TO BATH CITY FARM

On Tuesday, Year 3 went to Bath City Farm. The walk was tiring for some but it was also fun. When we got there, we had a quick break then in groups we went to look at all the different animals. Our personal favourites were the goats and ponies. Then we all had lunch in the shade and we talked to our friends. After, we looked at some different plants and we investigated some tulips that had absorbed blue dyed water. We could see how the water had been transported through the stem. We learned about seed dispersal and had a look at the poly tunnels growing all the plants ready to plant out in their garden. This will all help us with our Science lessons this term, as it is all about plants.

Fun fact: there were WOOLLY PIGS!

It was such a sunny, fun day to be learning outside.

Isla and Fern





YEAR 4 WOW DAY

To launch their enquiry 'What makes a European country unique?' Year 4 dressed up in clothing that represented their chosen European country. The children sampled food from 5 different countries and played a variety of traditional games!





DOODLE LEARNING

DOODLEMATHS

Year 1 are at the top of the DoodleMaths chart.

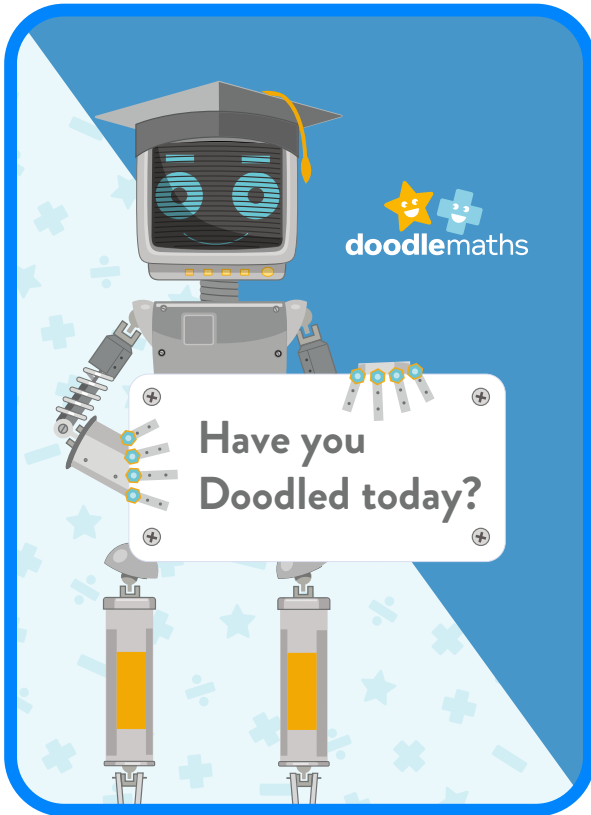
Congratulations to all of the children
in **1EO** and **1R**.

Well done to all of the children who have worked
extra hard this month to complete the Spring
Challenges.

Remember that Parents and Carers need to log in
again to the Doodle dashboard to claim the pin
badge.

We will celebrate the Spring champions when the
certificates arrive in school.

Remember - Doodle is your set Homework.



DOODLEENGLISH AND DOODLESPELL

Congratulations to **4B** who are leading the way in collecting stars in Doodle English,
having collected **1005** in the last seven days! Let's see if any other class can beat this
next week!

DoodleSpell champions this week are **6B** who have collected **401** stars this week so far.
Don't forget to log in this week to complete your Doodle Extras - this is your homework.

Ask your teacher if you are having any problems logging in.

GET DOODLING!

**ALL CHILDREN IN YEAR 1 TO YEAR 6 SHOULD AIM HIGH AND STAY IN THE
GREEN ZONE.**

