

Headteacher Mr M Cunniffe

' Relationship and Health Education' Summer Term 2024

Dear Parents,

As part of our Personal, Social, Health and Economic (PSHE) curriculum, next half term (Summer 2), we will be teaching our 'Relationship and Health Education' (RHE) topic. Relationship and Health Education is statutory and forms a part of PSHE subject. All schools in England are required to teach RHE in primary schools and the 'Department for Education' recommends that schools consider teaching Sex Education.

To support the delivery of PSHE and RHE, our school has adopted a quality-assured programme called 1decision which has been kitemarked by the PSHE Association - the UK's governing body for the subject area. The 1decision resources have been created by PSHE and Safeguarding experts, together with schools, and most importantly children.

Parents and Carers **do not** have the right to withdraw their children from lessons that cover the statutory Health and Relationship objectives (this includes puberty lessons) and lessons that cover national curriculum science objectives, including content on human development and reproduction.

As a part of our curriculum our school chooses to deliver the Sex Education element. This content is delivered in year 6 and is taught through 1decision's conception topic. Parents and carers can choose to withdraw their child from this unit.

To assist you in your decision, we want to assure you that our curriculum is taught in an age-appropriate manner and provides pupils with the time to ask questions in a safe environment and ultimately receive information based on facts, rather than hearing content second-hand or via online platforms.

To find out more about our chosen provider, we would like to signpost you to their Parent/Carer zone on the 1decision website where you can review the following:


- What is 1decision?
- How will my child's school use the 1decision resources?
- What themes do 1decision cover?
- 1decision content overview (including examples of their puberty and conception animations)
- Examples of 1decision Early Years content
- Understanding RSHE document
- Free home activities and much more!

Parent/carers Zone: <https://www.1decision.co.uk/resources/parent-carer-zone>



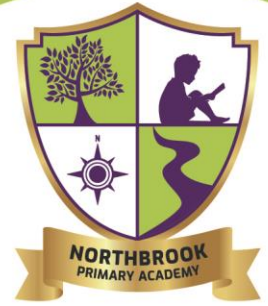
An Endeavour Learning Trust School
Registered in England
Company Registration Number 7848372
VAT Registration Number 125718416

01772 421599

 northbrookpa.org

 enquiries@northbrookpa.org

 Bannister Drive, Leyland, Lancashire, PR25 2GB



Headteacher Mr M Cunniffe

We hope you will take the time to review this information. Following this, if you would like to withdraw your child from the conception unit, please contact the school through the enquiry email at enquiries@northbrookpa.org with the subject "RSE withdrawal request" and outline your concerns and request for withdrawal in writing.

Along with this letter, you will also have received a knowledge organiser for your child's year group. This document highlights the key learning and vocabulary for their RHE topic.

If you have any further queries about the content or delivery of these units for your child, please do not hesitate to contact us at school.

Kindest regards,


M Cunniffe

Mr M Cunniffe (Headteacher)



An Endeavour Learning Trust School
Registered in England
Company Registration Number 7848372
VAT Registration Number 125718416

01772 421599

 northbrookpa.org

 enquiries@northbrookpa.org

 Bannister Drive, Leyland, Lancashire, PR25 2GB



Cunniffe

Iddecision PSHE Knowledge Organiser

Module: Relationships

Topic: Touch and Summative Assessment

Key Facts

- It is not always right to keep secrets if they relate to being safe
- Each person's body belongs to them
- It is important to seek help or advice if a relationship is making you feel unsafe or unhappy
- In school and in wider society, you can expect to be treated with respect by others, and in turn, you should show due respect to others, including those in positions of authority
- It is important to understand how to report concerns or abuse

Ask me a question!

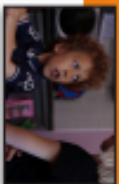
- Can you name the different human body parts?
- If you know of somebody who is upset about the way someone treats them, what could you do?
- If you feel uncomfortable in a relationship, who could you talk to?

I will learn the following new words/phrases:

Communicate	To exchange or share information or ideas.
Situation	What is happening now.
Penis	The part of a male's body that is used for urinating.
Testicles	Two round male organs that produce sperm.
Vagina	The part of a woman's body that connects her outer organs to her uterus.
Vulva	External female genitalia that surround the opening to the vagina.
Anus	The external opening of the canal through which excrement leaves the body.
Private parts	A person's genitals.
Appropriate	Suitable or acceptable for a particular situation.

By the end of these topics, I should:

- understand the difference between appropriate and inappropriate touch
- know why it is important to care about other people's feelings
- understand personal boundaries
- know who and how to ask for help
- be able to name human body parts



Year
3

Iddecision