

# Why are humans not like tigers?

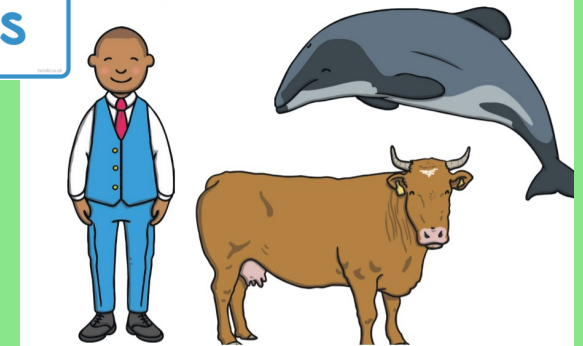
## Key Vocabulary:

amphibians	All amphibians begin their life in water with gills and tails. Examples are frogs and newts.
reptiles	Are animals that are cold-blooded. Most lay eggs and their skin is covered with hard, dry scales.
mammals	Mammals are also warm blooded animals. They breath air and have a backbone.
carnivore	A carnivore is a meat-eating animal that gets its food from killing other animals.
herbivore	A herbivore eats plants.
omnivore	An omnivore eats plants and meat.

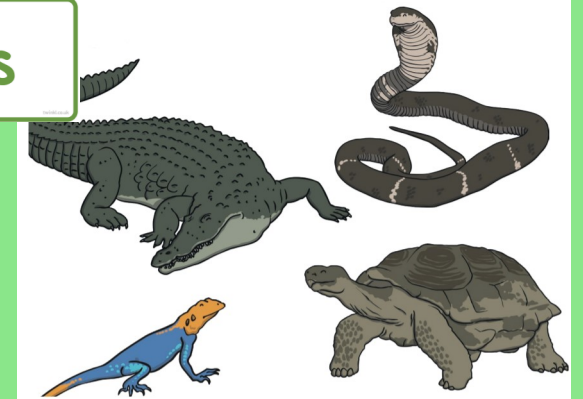
## Sticky Knowledge facts:

- ◆ There are many different animals in our world. They can all be grouped in different ways.
- ◆ Animals need air, water, shelter and food to survive.
- ◆ Each group of animals have a different set of characteristics which identifies if they are a fish, amphibian, reptile, bird or mammal.
- ◆ Humans are mammals because they have hair and lungs, they are warm blooded and they can live on land or in water.
- ◆ There are so many different parts of the human body and each one has a different job to do.
- ◆ Plant eaters are herbivores, meat eaters are carnivores and animals that eat both plants and animals are omnivores.

## Mammals



## Reptiles



## Amphibians



There are many different animals in our world. They can all be grouped in

Animals need air,  
water, shelter  
and food to sur-  
vive.

Each group of animals  
have a different set of  
characteristics which  
identifies if they are a  
fish, amphibian,

Humans are mammals because they have hair and lungs, they are warm blooded and they can live on land or in water.

There are so many  
different parts of the  
human body and each  
one has a different job  
to do.

Plant eaters are herbivores, meat eaters are carnivores and animals that eat both plants and animals are omnivores.