



# Oak CE Primary Newsletter

Friday 29th November 2024



Last week we had a full morning looking at reading. We had external advisors come into school to watch lessons, observe phonics, speak to pupils, hear pupils read, look at reading records and speak to teachers and leaders in school. It was such a positive experience: phonics is well taught and consistent, all pupils have books matched appropriately to their reading level, pupils spoke about how they enjoyed reading and our Reading Buddies shared how they support our younger pupils with reading. Learning behaviours were focused and calm throughout school. The advisors also stayed for lunchtime to see our new OPAL lunchtime approach that we are developing. They were really impressed with the provision and the amount equipment we are building to engage the pupils in positive play at lunchtime. From January 2025 we will be starting to look towards appointing parent governors to support the school in our school improvement journey. We are really looking forward to involving parents in the strategic direction of school. There will be a letter before the Christmas break which gives more details about how to get involved. Mrs Garlick.



## OPAL donations

On the next page, you can see the things we are collecting to develop our OPAL lunchtime provision for children. If there is anything you can help with and donate to school, we would really appreciate your help. Please send these into school with your child.

## Attendance

**Our whole school attendance target is**

**96%**

**This week's attendance was**

**93.7%**

**The classes with the highest attendance this week was**

**4.2 with 99%**

## Parent Survey

Next week a paper copy of our parent survey will be sent home. We would really appreciate knowing what you and your children value about Oak and what you would like to see developed further.

## Reception Open Morning

On Wednesday 3<sup>rd</sup> December, Reception parents are welcomed into the classroom to take part in learning with their children and seeing how our Early Years provision is supporting their child's development. Please see ClassDojo next week for more information.

## Attendance Competition

Don't forget – every day is important! Our Attendance Competition League has started! Have a look further down the newsletter to see the weekly commentary and which classes are in the lead!

**97% - 100% Attendance = 3 points**

**95%-96% Attendance = 2 points**

**94-95% Attendance = 1 point**

**Below 94% = 0 points**

The final scores will be taken on Friday 20<sup>th</sup> December and the winning class will receive a prize! We will keep you updated each week with the points.

## School Council

Some of our school council members went to meet the Mayor at Huddersfield Town Hall and learnt more about democracy and they were able to ask questions and discuss topics they are passionate about. Next week we have an update about what they will be doing in school over the next few weeks

At Oak we are **Ready, Respectful & Safe**

# Attendance League Commentary

## Week 4 Commentary

Welcome, folks, to this week's exciting match-up in the Oak Primary School Attendance League, where class teams are fighting hard to earn those precious points week by week! We've seen some dramatic performances, and let's dive straight into the action.

First up, we have the Snowdrops. It's been a tough campaign for them so far with no points on the board. They started the season at 82% in Week 1, showing promise, but their form has been inconsistent. The percentage dipped to 69% in Week 4, and though there's been some improvement, their record still stands at a solid but unremarkable 0 points. Can they turn this around in the coming weeks? Time will tell. Bluebells have had a slightly better campaign. They opened strong with 78% attendance in Week 1, and have steadily increased their performance, reaching 86% in Week 4. But despite this improvement, they've yet to score any points, also sitting on 0 points. Their fans are hoping for a big week ahead to push them into the scoring zone!

Moving on to R1, and this team is dominating! A perfect start in Week 1 with 97%, netting them a whopping 3 points. They've followed that with consistent attendance, with only a slight dip in Week 3 to 93%. This team has been scoring week after week and is currently sitting at 6 points, comfortably at the top of the table. Strong contenders for the title! R2 have been on a steady decline. After an impressive 90% in Week 1, they've struggled to maintain that level, dropping to 78% by Week 4. Despite a solid start, they've yet to score any points. Their 0 points leave them with much work to do to catch up.

Now let's talk about 1.1. This team has had a strong showing in recent weeks, with an impressive 97% attendance in Week 4, earning them 3 points. They started well but have been steady and consistent, currently at 3 points, but can they keep that momentum going? 1.2 has had a more modest journey. They began the season with 83% attendance, improving to 92% by Week 4, but still haven't managed to collect any points. With 0 points, they need to push hard in the upcoming weeks to break into the scoring ranks.

2.1 has been in a similar spot. Their attendance in Week 1 was a respectable 94%, and they've maintained that level of commitment, but with a lot of ups and downs, including a drop to 92% in Week 4. They've earned just 1 point so far and will need more consistency to climb the table. 2.2 has been hovering in the mid-80s to low 90s range. With no points on the board and a steady but unimpressive record, they're at 0 points right now. Can they turn it around?

3.1, on the other hand, is on fire. Another powerhouse of the competition, with 97% attendance in Weeks 1 and 2, earning them 3 points each week. They had a slight dip in Week 3 but bounced back with 94% in Week 4. They're sitting pretty with 7 points at the top! 3.2 is not far behind, also showing excellent form. They scored 3 points in Weeks 1 and 2, with an impressive 98% in Week 2. However, a dip to 85% in Week 4 saw them lose ground, but with 7 points, they're firmly in contention!

Over to 4.1, who have been solid throughout. Their attendance hovered between 94% and 97%, earning them a steady stream of points, bringing them to 8 points. It's looking good for them as they continue to climb the ranks. 4.2 is leading the way with a flawless performance in Week 4, hitting a perfect 99%. They've consistently earned points in every week, and their dedication has earned them 11 points, putting them in the lead!

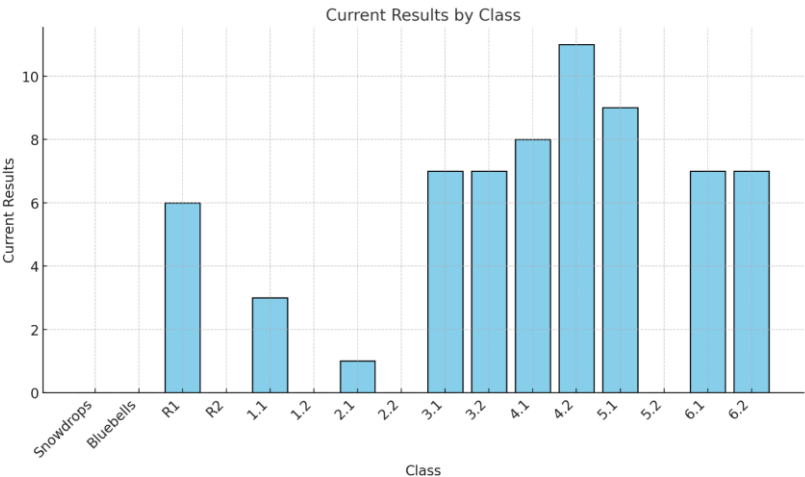
5.1 has also been strong with consistent attendance, ranging from 96% to 98%. While they've dropped a couple of points along the way, they've picked up 9 points, making them a force to be reckoned with. 5.2, unfortunately, has had a rough start, hovering around the 90% mark and struggling to score points. With 0 points, they'll need a dramatic improvement in the coming weeks to make a move.

6.1 and 6.2 have been solid mid-table performers. Both teams have fluctuated between 91% and 98%, earning a decent haul of points, with 7 points each. They're still in the race, but they need more consistency to climb higher.

And there you have it, folks! The league is heating up, with 4.2 in the lead with 11 points, closely followed by 3.1 and 3.2 both with 7 points. It's going to be a thrilling end to the season. Which class will take the crown? Stay tuned!

Attendance League Table Week 4

| Class     | Week 1     | Week 2     | Week 3     | Week 4     | Week 5 | Week 6 | Week 7 | Current Results |
|-----------|------------|------------|------------|------------|--------|--------|--------|-----------------|
| Snowdrops | 82%        | 83.8%      | 83%        | 69%        |        |        |        | 0               |
|           | (0 points) | (0 points) | (0 points) | (0 points) |        |        |        |                 |
| Bluebells | 78%        | 82.3%      | 83%        | 86%        |        |        |        | 0               |
|           | (0 points) | (0 points) | (0 points) | (0 points) |        |        |        |                 |
| R1        | 97%        | 95%        | 93%        | 94%        |        |        |        | 6               |
|           | (3 points) | (2 points) | (0 points) | (1 point)  |        |        |        |                 |
| R2        | 90%        | 87%        | 88%        | 78%        |        |        |        | 0               |
|           | (0 points) | (0 points) | (0 points) | (0 points) |        |        |        |                 |
| 1.1       | 91.8%      | 92%        | 92%        | 97%        |        |        |        | 3               |
|           | (0 points) | (0 points) | (0 points) | (3 points) |        |        |        |                 |
| 1.2       | 83%        | 90%        | 90%        | 92%        |        |        |        | 0               |
|           | (0 points) | (0 points) | (0 points) | (0 points) |        |        |        |                 |
| 2.1       | 94%        | 90%        | 94%        | 92%        |        |        |        | 1               |
|           | (1 point)  | (0 points) | (1 point)  | (0 points) |        |        |        |                 |
| 2.2       | 88%        | 86.5%      | 89%        | 90%        |        |        |        | 0               |
|           | (0 points) | (0 points) | (0 points) | (0 points) |        |        |        |                 |
| 3.1       | 97%        | 97%        | 92%        | 94%        |        |        |        | 7               |
|           | (3 points) | (3 points) | (0 points) | (1 point)  |        |        |        |                 |
| 3.2       | 97%        | 98%        | 95%        | 85%        |        |        |        | 7               |
|           | (3 points) | (3 points) | (1 point)  | (0 points) |        |        |        |                 |
| 4.1       | 95%        | 94%        | 96%        | 97%        |        |        |        | 8               |
|           | (2 points) | (1 point)  | (2 points) | (3 points) |        |        |        |                 |
| 4.2       | 97%        | 97%        | 95%        | 99%        |        |        |        | 11              |
|           | (3 points) | (3 points) | (2 points) | (3 points) |        |        |        |                 |
| 5.1       | 98%        | 96%        | 96%        | 96%        |        |        |        | 9               |
|           | (3 points) | (2 points) | (2 points) | (2 points) |        |        |        |                 |
| 5.2       | 91%        | 90.3%      | 92%        | 89%        |        |        |        | 0               |
|           | (0 points) | (0 points) | (0 points) | (0 points) |        |        |        |                 |
| 6.1       | 91%        | 95%        | 96%        | 97%        |        |        |        | 7               |
|           | (0 points) | (2 points) | (2 points) | (3 points) |        |        |        |                 |
| 6.2       | 91%        | 96%        | 96%        | 98%        |        |        |        | 7               |
|           | (0 points) | (2 points) | (2 points) | (3 points) |        |        |        |                 |





# OAK PRIMARY NEEDS YOU!

As part of our new Opal initiative, to ensure we have a variety of equipment outside for the children, we are now asking for donations of anything you no longer need at home. If you have any of the following that you no longer need, we will happily make use of it at playtimes!

**RECEPTION** – Old pots, pans, spatulas or spoons to cook up an imaginary treat; or simply bang about!



**YEAR 1** – Dressing up clothes, these could be old fancy-dress clothes or old adult clothes that are no longer needed. Let's create our own fashion runway!



**YEAR 2** – Bags and hats for imaginary adventures! An exhibition down the school field sounds fun...



**YEAR 3** – Small dinosaur or animal figures/toys. (Why don't we make our own Jurassic Park?)



**YEAR 4** – Small vehicle toys such as cars or trucks. (The dinosaurs are going to need something to drive aren't they?)



**YEAR 5** – Old (clean) sheets or bedding for den building.



**YEAR 6** – Any type of sticky tape (such as cellotape, masking tape or packing tape) for den building.



We will also happily accept any donations of old tarps if anyone happens to have any. Please feel free to donate from any of the above categories, even if they are not specified for your child's year group. All donations will be gratefully received.



## **Dates for your Diary**

**Tuesday 3<sup>rd</sup> December: Open Morning in Reception**

**Friday 6<sup>th</sup> December: The Big Sing**

**Wednesday 11<sup>th</sup> December: Christmas Fair**

**Tuesday 17<sup>th</sup> December at 9.30am: Reception Nativity**

**Wednesday 18<sup>th</sup> December: Year 1 & 2 Christmas  
Performance**

**9.30am for Y1 parents**

**2pm for Y2 parents**

**Wednesday 18<sup>th</sup> December: Christmas Dinner Day**

**Thursday 19<sup>th</sup> December: Y3 & Y5 Christingle**

**Friday 20<sup>th</sup> December: Christmas Colours/Jumper Day**

**Friday 20<sup>th</sup> December: School Closes for Christmas**

**Don't forget every Thursday is Coffee Morning  
8.45-9.45am**



# Be smart on the internet

Childnet  
International

www.childnet.com

S

**SAFE**

Keep safe by being careful not to give out personal information – such as your full name, email address, phone number, home address, photos or school name – to people you are chatting with online.



M

**MEETING**

Meeting someone you have only been in touch with online can be dangerous. Only do so with your parents' or carers' permission and even then only when they can be present.



A

**ACCEPTING**

Accepting emails, IM messages, or opening files, pictures or texts from people you don't know or trust can lead to problems – they may contain viruses or nasty messages!



R

**RELIABLE**

Information you find on the internet may not be true, or someone online may be lying about who they are.



T

**TELL**

Tell your parent, carer or a trusted adult if someone or something makes you feel uncomfortable or worried, or if you or someone you know is being bullied online.

You can report online abuse to the police at [www.thinkuknow.co.uk](http://www.thinkuknow.co.uk)

THINK  
U  
KNOW



[www.kidsmart.org.uk](http://www.kidsmart.org.uk)

KidSMART



Visit Childnet's Kidsmart website to play interactive games and test your online safety knowledge. You can also share your favourite websites and online safety tips by Joining Hands with people all around the world.





**DO YOU NEED HELP THIS CHRISTMAS  
AND LIVE IN THE KIRKLEES AREA?**

**WE ARE HERE FOR YOU!**



We can supply your family with a gift for  
each child aged 0-18 years.

All you need to do is contact:  
**[fundraising@freshfutures.org.uk](mailto:fundraising@freshfutures.org.uk) or**  
**07761 339 284**  
with your full name & the age and gender of the child



Registered Charity Number: 288125

# Little Deer Wood

## Activities & Chit Chat

# ACTIVATE



Saturday  
10 - 12:30 \*\*Term Time  
Only\*\*



FREE- this is a fully funded  
club



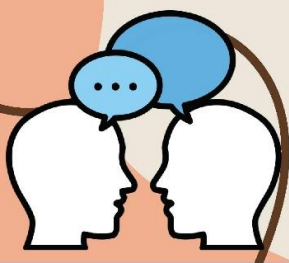
Little Deer Wood Activity Centre  
Shepley Bridge Marina,  
Mirfield, WF14 9HR

Tel: 01484 225952

Please ring to book a place.

**SEND** activity group where  
you can have fun doing  
outdoor activities and crafts,  
whilst developing  
communication skills and  
exploring key themes within  
the community.

**For 13-18 year  
olds with SEND**







Funded by  
UK Government

## Launch your career in Early Education

- ✓ 60 guided learning hours
- ✓ Face-to-face training delivered by our experienced tutors
- ✓ Specific course units covering all aspects of working in Early Years
- ✓ Additional training in Paediatric First Aid
- ✓ Experience in an Early Years setting
- ✓ Employability skills and careers advice

**APPLY NOW**



## SKILLS BOOTCAMP IN EARLY YEARS

Skills Bootcamps are free, flexible courses of up to 16 weeks, giving people the opportunity to build up sector-specific skills and an offer of an interview with an employer upon completion.



**NEW COURSE FOR  
JANUARY 2025**



Delivered in venues across Kirklees



**TO APPLY, SCAN  
THE QR CODE OR  
USE THE LINK:**

<https://forms.office.com/e/9nDz14bQ4P>

You may be eligible to apply for a Skills Bootcamp if you:

- are aged 19 or over
- have the right to work in the UK
- live in England

**CONTACT US FOR MORE INFORMATION**



**01484 234153**



**success.centres@kirklees.gov.uk**

**SKILLS  
FOR LIFE**

**SKILLS  
BOOTCAMPS**



Supported by

West  
Yorkshire  
Combined  
Authority

Tracy  
Brabin  
Mayor of  
West Yorkshire

Employment  
& Skills  
Kirklees

Kirklees  
COUNCIL





## POP UP ROADSHOW

**A SELECTION OF GREYS AND UNLOGOED ITEMS IN A VARIETY OF DIFFERENT SIZES WILL BE AVAILABLE TO TAKE AWAY ON THE DAY.**

**Monday 9th December-**

10am-12pm- Holmfirth Library, 47 Huddersfield Road, HD9 3JH  
1pm-3pm Rawthorpe & Dalton Library, Ridgeway, Huddersfield, HD5 9QR

**Tuesday 10th December-**

10.30am-12.30pm- Birkby & Fartown Library, Lea Street, HD1 6HF  
4pm-6pm Shepley Methodist Church, Lane Head Road, HD8 8DB

**Wednesday 11th December-**

9.30am-11.30am Gledholt Methodist Church, Edgerton Grove Road, HD1 5QX

**Thursday 12th December-**

11am-1pm Chestnut Centre, 2A Chestnut Street, HD2 1HJ  
3pm-5pm-Almondbury Library, Fairfield Road, HD5 8TD

**Friday 13th December-**

9.30am-11am Moldgreen United Reform Church, Old Wakefield Road, HD5 8AA  
1.30pm-2.30pm FOCAL Community Centre, New Hey Road, HD3 4DD



# FAMILY DROP IN

FREE

## Every Monday

10am-12pm  
(term time only)

For parents and carers with  
children under 5

Family advice, support and information

Light refreshments provided

A variety of interactive play activities such as  
treasure baskets, sensory play, messy play  
and free play

Starting  
13th  
January  
2025

FUN



COMMUNITY



PLAY



Home-Start Kirklees  
Queen Street South  
Huddersfield HD1 3AZ

**HOME  
START**  
Kirklees

Kirklees  
Families Together

[www.homestart-kirklees.org.uk](http://www.homestart-kirklees.org.uk)  
01484 421925



CONTACT US





# Christmas Day Meal

A Christmas day meal and celebration at the Jubilee Centre, for all those who would either be on their own, or for other reasons wouldn't have a merry Christmas at home.

Free transport may be available.

To book a place or to volunteer call 01484 551551.

Jubilee Centre, Market Street  
Paddock, HD1 4SH  
[www.thebranch.uk](http://www.thebranch.uk)  
01484 551 551



## CHRISTMAS DAY LUNCH 12.30 PM

Come and enjoy a 2 course turkey dinner (vegetarian option available). For anyone on their own on Christmas Day or for anyone who will struggle to provide a hot meal for themselves.

All meals have been kindly provided by The Sons of the North cafe and we would love to see you!

### TO BOOK TEXT 07942302019

Please book in early to avoid disappointment. Transport can be arranged if needed.

THE ARK CHURCH  
181 LOWERHOUSES LANE  
HUDDERSFIELD  
HD5 8JZ





**Changing childhoods.  
Changing lives.**

**Sessions for Parents and Carers with a focus on Neurodiversity**

**Thursday 17<sup>th</sup> October 2024 at 2pm: Behaviour**

**Monday 11<sup>th</sup> November 2024 at 2pm: Boundaries and demands**

**Tuesday 10<sup>th</sup> December 2024 at 1.30pm: Food**

**Wednesday 22<sup>nd</sup> January 2025 at 1.30pm: Sleep**

**Monday 3<sup>rd</sup> February 2025 at 2pm: Executive Function**

**All sessions are completely free of charge and are led by experts  
from Barnardo's Children's Charity.**

