

Notification



OAKFIELD ACADEMY
BELIEVE AND ACHIEVE

Monday 28th June 2021

Dear Parents,

As promised, I am writing to notify you that 2 pupils have been confirmed as testing positive by PCR tests. We have been notified of these results this morning and have responded as swiftly as possible. We have followed the national guidance and thoroughly risk assessed with Public Health. Fortunately, only a small number of pupils in Year 6 have been identified as close contacts and are now isolating at home until Saturday 3rd July. They will be released from isolation on Sunday 4th.

The parents of those requiring isolation have all been contacted and so this letter is to reassure you that if you have not received our phone call, there is no need to isolate your child and pupils must continue to attend school.

If your child is one of the small number now required to isolate at home and you require support for them to access IT, please contact reception or the academy email.

Whilst I fully understand this may cause anxiety amongst the academy community, I can assure you all necessary steps are being taken to minimise risk to others. Our procedures have been shared with Public Health Somerset as part of the rapid risk assessment that schools undertake.

Lateral Flow Tests – Years 7 & 8

Could I please also take this opportunity to remind you that every pupil in Years 7 and 8 should be taking a lateral flow test, twice a week in order to keep themselves, you and the rest of our community as safe from transmission as possible. I receive weekly figures on the results that have been reported on the NHS recording site for our academy and I'm sad to have to report that the number has worryingly decreased more recently. **PLEASE** consider getting back into the habit of doing these before leaving for school on Mondays and Thursdays (Year 8ACOs going to Charterhouse will do Wednesday morning this week!). This could make a huge difference to keeping us all in school and learning – Thank you.

Thank you for all your support and cooperation at this time.

Miss Emma Wilkes
Head teacher



Oakfield Academy
Information Page

Head Teacher: Miss Emma Wilkes | Chair of Governors: Ms Kate Hellard
Oakfield Academy, Oakfield Road, Frome, Somerset BA11 4JF
T:(01373) 462539/463832 E:oakfieldacademy@educ.somerset.gov.uk W:www.oakfieldacademy.co.uk
Oakfield Academy Academy Trust, Oakfield Road, Frome BA11 4JF. Company number:07694044 registered in England.

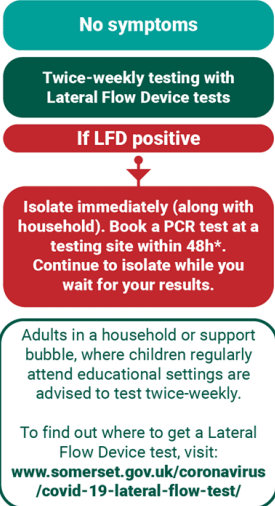


@OakfieldAcorns

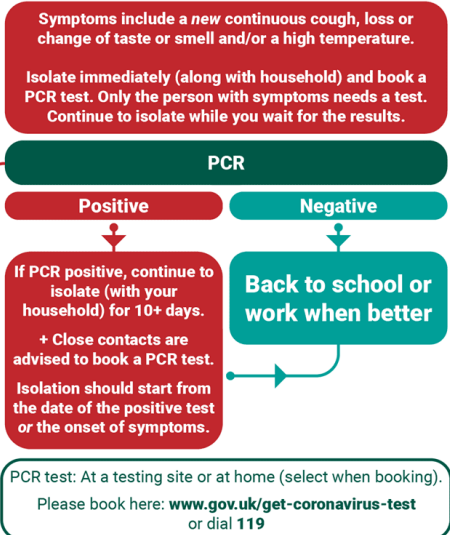
EYFS (Reception) - Year 6 Covid-19 testing



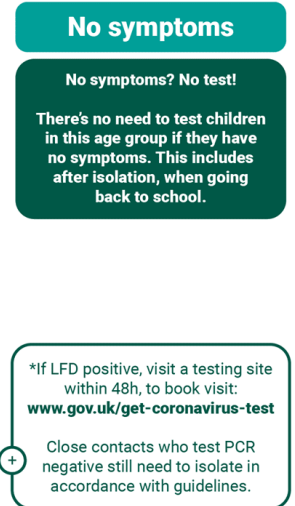
School staff and parents/carers



Anyone with symptoms



Primary aged children (Reception to year 6)



Please do not forget to record positive and negative results on the government website as instructed, as well as informing your school. For guidance on self-isolation, please visit: www.gov.uk/government/publications/covid-19-stay-at-home-guidance/stay-at-home-guidance-for-households-with-possible-coronavirus-covid-19-infection

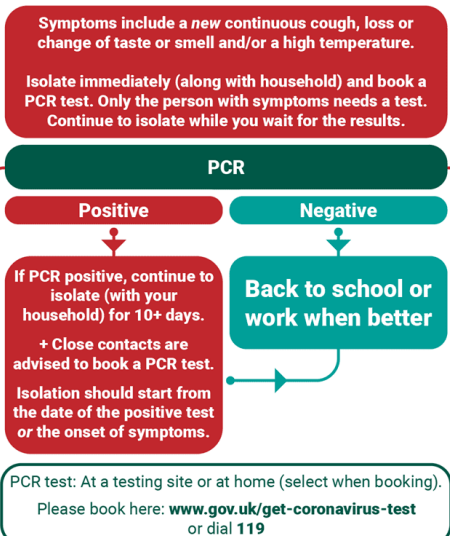
Secondary school, college and further education Covid-19 testing



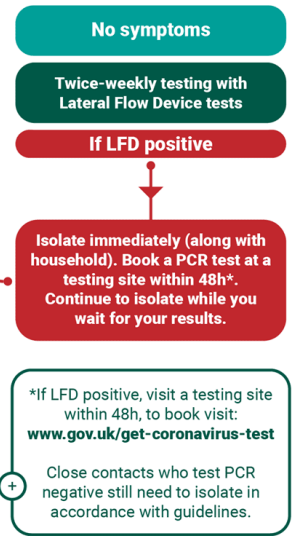
School staff and parents/carers



Anyone with symptoms



Students



Please do not forget to record positive and negative results on the government website as instructed, as well as informing your school or college. For guidance on self-isolation, please visit: www.gov.uk/government/publications/covid-19-stay-at-home-guidance/stay-at-home-guidance-for-households-with-possible-coronavirus-covid-19-infection



Somerset's Local Authorities

Coronavirus support helpline

0300 790 6275

Available 8am to 6pm, seven days a week

A single number is now available for anyone in Somerset who needs Coronavirus related support from Somerset's Local Authorities. Anyone who can't find help within their community can use the helpline to get help and advice surrounding:

- Emotional support if you're feeling worried or anxious
- Financial support
- Personal care and support including food and delivery of prescriptions
- Housing and support for the homeless
- Social Care or Medical transport needs
- Waste collection and disposal
- Employment, skills and business advice

