

Create a 'Learning Infographic' that displays information about 1-2 of your chosen biomes.

What is the environment like?

What lives there?

How have animals adapted to their surroundings?

Challenge: How have humans impacted upon the biome/biomes?

EDUCATION INFOGRAPHIC

Lorem

Lorem ipsum dolor sit amet, ne wisi
atomorum est. Aequie eirmod id eum, alia
argumentum et vis. Nihil clita labore ei

Vix vocent

Vix vocent
equidem facilis
an, eu has noster
numquam
feugiat. Ullum



Brute

Brute fugit
voluptaria has in,
id oblique
aliquam molestie
pri. Paulo fastidii



Eu integre

Eu integre
tractatos vel, nam
adhuc volutpat te.
Vim cu animal
nostrud

Impetus

Impetus
sapientem nec ut,
agam menandri
periculis his at.
Vel facer



Unum

Unum adhuc
solum mei an.
Vulputate
honestatis an
mea, civibus



Ei mel

Ei mel affert electram conclusionemque,
homero volutpat salutatus eu nam. Duo
ad dui laboramus scribebuntur. Cu vel

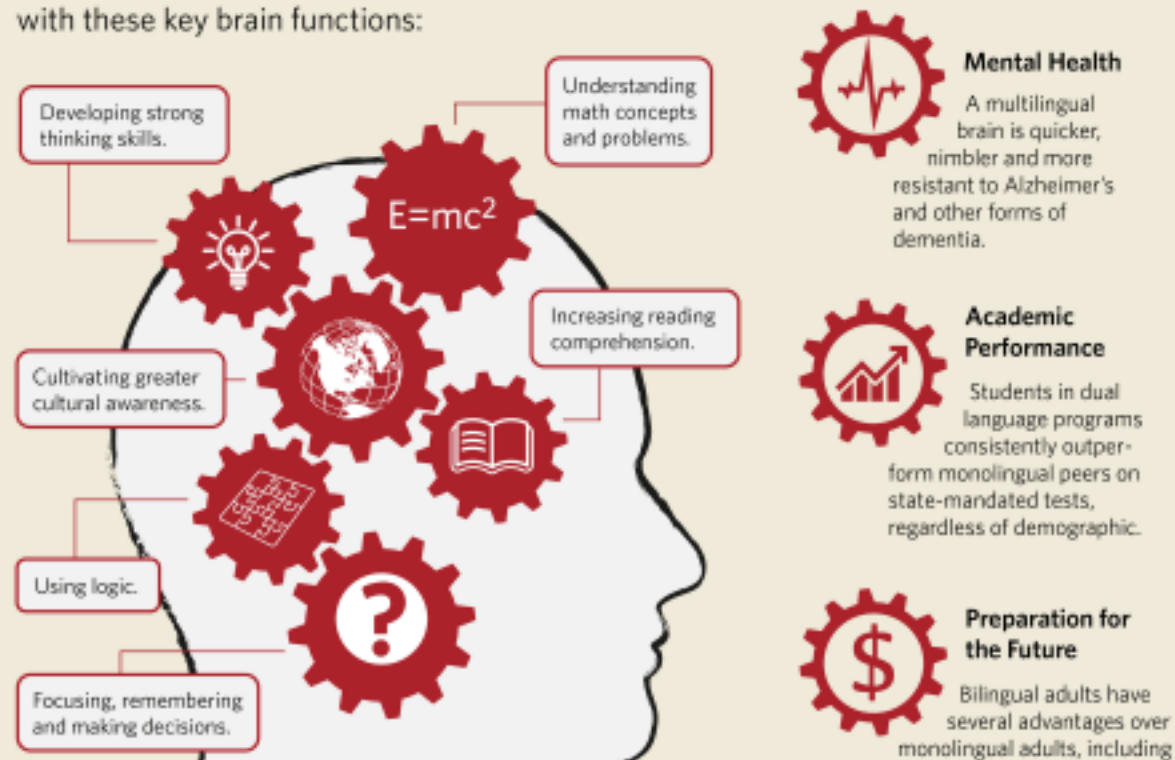
Eu per

Eu per utinam
everti, quod
omnis dicunt his
id. Eu eum discere
tacimates

Benefits of a Bilingual Brain

Splash language immersion programs provide a unique and powerful opportunity to strengthen children's highest cognitive brain potentials through deliberate literacy development in two languages and authentic exposure to rich language experiences.

Research shows that **bilingual people** have an easier time with these key brain functions:



7 Brain-based Tips for eLearning Success

-
- A stylized illustration of a person's head and shoulders. The person has dark hair and is wearing an orange shirt. A dark watering can is positioned at the top right, pouring blue water onto the person's head. The water is represented by several blue dashed lines.
- Use stories to remember
 - Plan for 20 minutes segments
 - Help learners to avoid stress and fear
 - Favor recognition over recall
 - Keep the working memory in mind
 - Include content to which students can relate
 - Balance emotion and cognition

Use your Biome maps

- Describe the distribution of Ecosystems across the world, where are they all and why, (*geographical language*).
- Which Biome do you feel would have the most diverse (?) range of living things?
- Why do some ecosystems have a greater degree of '**Bio-diversity**' than others?



*These are Lianas
Create 3 sentences
to describe which
Biome they exist in
and why this is*

