

Year 7 – June 2020 (2 weeks)

Listening Quiz

Lesson 1

This quiz is linked to your work on 'The Chromatic Scale' (Unit 17) that you have recently been working on in your previous little lessons.

Listen to the following piece of music by Debussy:-

<https://youtu.be/m7b1FkZYarU>

Have a go at answering the Q in the following listening quiz. You will need to scroll to the bottom of this page. There are two pages to the document and I will post the answers next week! Make sure you read the text at the start of the quiz in order to learn a little bit more about the music.

CHALLENGE – do some further reading about the composer and the story behind this piece of music

Lesson 2

Have a go at these revision quizzes (see links below) for year 7. Most of the Q you should be familiar with but a few might be slightly more challenging. Give them a go and see how you get on.

<https://www.educationquizzes.com/ks3/music/musical-cliches-01/>

<https://www.educationquizzes.com/ks3/music/year-7-revision-01/>

You get 15 free Q per day without a subscription!

NAME: _____

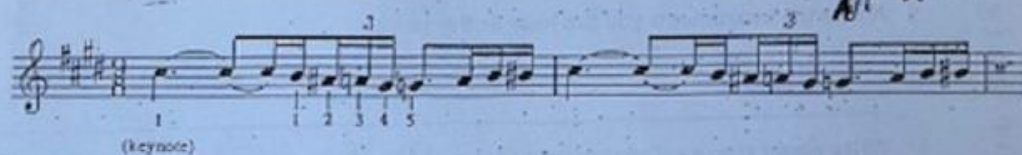
FORM: _____

L'Après-midi d'un Faune

The full title of the piece you are going to hear is *Prélude à l'Après-midi d'un Faune*. It was composed by Claude Debussy, a Frenchman who lived from 1862 to 1918.

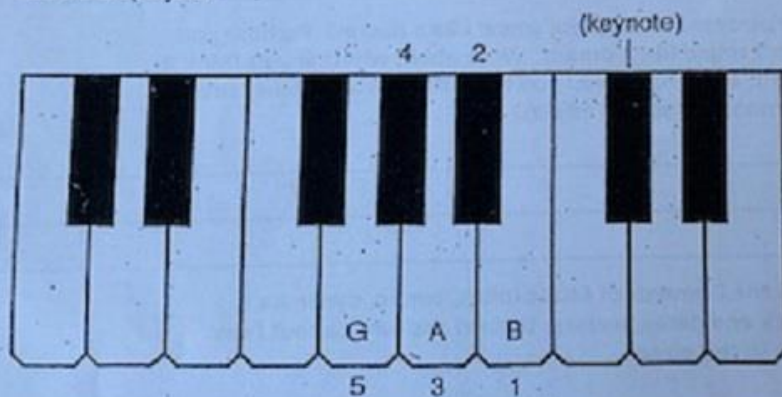
The faun is a legendary creature with the top half of a man and the lower half of a goat. It lives on the slopes of Mount Etna in Sicily and in the hot afternoon sun it sleeps and dreams of nymphs and naiads. This piece of music tells the story of one of its dreams.

The opening tune of the piece is played by the flute. Try to follow it through as it is played. Listen to the semitones which give this tune its character.



© 1972 by Heinrichsen Edition, Peters Edition Limited. Reproduced by permission of the Publishers.

If notes 1–5 were played on the piano the keys marked with numbers would be played.



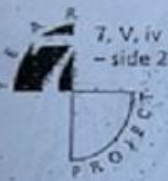
QUESTIONS

1 In this tune the notes:

- move up and down by step
- leap about all over the place
- are a mixture of both.

(Tick the correct answer.)

2 What is the word which describes this type of tune? _____



NAME: _____

FORM: _____

3 Listen carefully to the flute. Write about the music it plays. Here are some words for you to choose from – slow, fast, soft, loud, dreamy, busy, high, low. Of course there will be other things you want to say too.

NEIGHBOURS

4 This piece is played by a :

- brass band
 - piano
 - orchestra
 - jazz band
 - choir
- (Tick the correct answer)

5 Name the instruments you can hear in this piece.

6 Write about the way Debussy uses silence in this piece.

7 How does Debussy make the piece sound like a dream? Perhaps you think it doesn't sound like a dream. Write about whether you think it does or doesn't, and what makes you think this. Does Debussy use special instruments for special effects?

8 Choose one of the Elements of Music (pitch, tempo, dynamics, duration, attack and decay, texture, timbre) and write about how Debussy uses it in this piece.

9 Give your opinion of this piece and say why you think this.

