



OAKFIELD ACADEMY  
BELIEVE AND ACHIEVE

# Edition No 19, 20/21

## March 2021



### Fundraisers' Virtual Raffle

We would like to thank the following organisations for supporting our raffle. Winners will be drawn on Thursday 1st April, tickets can be purchased virtually on the following link:-

<https://raffall.com/Oakfield75>

HALFORDS, Frome—Camping Hamper  
MORRISONS, Warminster—Easter Hamper  
MORRISONS, Westbury—Easter Hamper  
HIGHCROFT VETS—Cat/Dog Goodie Bag  
FROME BREWING CO— Selection of Beers  
TESCO, Trowbridge—Selection of dvds  
CONSORTIUM Trowbridge—Art Set  
M&S Frome—£10 Gift Voucher  
LILLEYS CIDER Frome—3 Litre Box of Cider  
LGS Frome—Chocolates and Gin



This fabulous art work inspired by Stravinsky's 'The Firebird' during a Music lesson. Well done Kizzi Tomkins and Jesse Morrison both from 6S.

## VACANCY

We currently have a vacancy for a Humanities Teacher. Closing date 19.4.21. See website for details. Thank you.

## Easter Holidays

Oakfield Academy closes on Thursday 1st April at 3pm, returning on Monday 19th April. Years 7&8—don't forget to keep doing your screening tests at home twice a week and report your result.



Oakfield Academy, Oakfield Road, Frome BA11 4JF

Tel: 01373 462539

E-mail: [oakfieldacademy@educ.somerset.gov.uk](mailto:oakfieldacademy@educ.somerset.gov.uk)

Web: [www.oakfieldacademy.co.uk](http://www.oakfieldacademy.co.uk)

Attendance E-mail: [oakfieldattendance@educ.somerset.gov.uk](mailto:oakfieldattendance@educ.somerset.gov.uk)

If you would like further information on any of the items in the newsletter, please contact the school office.

Follow us on Facebook and Twitter via our website.



## IP6.1 – Inclusion Inquiry

The Inclusion inquiry is **open now** and this opportunity for people to have their say will close on **Friday 30<sup>th</sup> April 2021**. **What is the Inclusion Inquiry?**

As part of our work to improve SEND services within Somerset, we have launched an 'Inclusion Inquiry' in order to find out about educational inclusion within Somerset. This is not an audit or an evaluation but a conversation. We want to hear from you about your experiences of education inclusion in Somerset. By education inclusion, we mean that children and young people with any additional needs or disabilities are able to access and participate in education without experiencing issues and barriers. We would like to hear from children, young people, parents, carers, families, professionals, community members and anyone who would like to contribute. We are interested in what has been a good experience for you, what could have been improved and what you would like to see happen in the future in school, in your community and if relevant, in any clubs or leisure activities. Your views will be used to help us understand what we do well and what we could do better.

You can find more information about the Inclusion Inquiry, including video clips and a poster/leaflet by visiting <https://choices.somerset.gov.uk/025/send-news/send-written-statement-of-action-improvement-priority-6-1-inclusion-inquiry/send-news/>

We are asking professionals if they could help us to promote the inquiry to the families and children/ young people they work with, as well as supporting them to have their say, in any of the following ways.

### How do you have your say?



Click on the Inclusion Inquiry survey link [CLICK HERE](#) – and answer a few questions



Contact your school, a trusted adult, professional or organisation and ask how you can be involved in the Inclusion Inquiry



Post letters, drawings, documents to: **Inclusion Inquiry, County Hall, Taunton, TA1 4DY** Remember to include your name and contact email address, if you want us to get back in touch.



Send a message/upload a video, photo or sound clip via WhatsApp on **07775221297**.



Email [Inclusion\\_Inquiry@somerset.gov.uk](mailto:Inclusion_Inquiry@somerset.gov.uk) with your view, and attach any photos or documents.

If you have any questions please do not hesitate to contact us at  
[inclusioninquiry@somerset.gov.uk](mailto:inclusioninquiry@somerset.gov.uk).

## THE PERFECT FOOTBALL TEAM by Aelfric Bidder 8S

First take a handful of ambition and a pinch of a dream.

Then put some boots on and get to work on that green grass.

Use a coach to get some defenders working hard.

Don't forget the flying full backs with the pace and good ball on them.

Then mix all of them together and a quick reflex, the keeper.

Then the boss of the park the creative, tackling midfielders.

Rapid wingers make the game skilful, they have got wicked pace and great cross.

And to finish it off there's the sharpshooting strikers.

That's all you will need to make a perfect football team.



## ATTENTION YEAR 8

Year 8 pupils have been invited to take part in the **Lions International Peace Poster Competition.**

All details can be found in the art google classroom. Whilst this competition is for Year 8 pupils to complete at home over the Easter break, the art department is happy to provide the required A2 paper. Please see Ms Stewart for paper and more details if interested.

## CLAIMING FINANCIAL SUPPORT UNDER THE TEST AND TRACE SUPPORT PAYMENT SCHEME

**Check out the following link if you have been financially affected by Test & Trace.....**

[https://www.gov.uk/government/publications/test-and-trace-support-payment-scheme-claiming-financial-support/claiming-financial-support-under-the-test-and-trace-support-payment-scheme?utm\\_source=22%20March%202021%20C19&utm\\_medium=Daily%20Email%20C19&utm\\_campaign=DfE%20C19](https://www.gov.uk/government/publications/test-and-trace-support-payment-scheme-claiming-financial-support/claiming-financial-support-under-the-test-and-trace-support-payment-scheme?utm_source=22%20March%202021%20C19&utm_medium=Daily%20Email%20C19&utm_campaign=DfE%20C19)



**As previously reported, important groundworks have started on our Games Court. We are all looking forward to PE lessons again on the newly surfaced Court.**

Griff's Coaching

facebook

1:1 Football Coaching aiming to improve players of all ages: technically, physically and mentally. FA Level 2 Coach, FA Level 2 Talent ID, Full DBS certificate, 5 years experience of 1:1 Football Coaching.

For more information, go to 'Griff's Coaching' on Facebook, Whatsapp +447952502540, or email benjamin.griffiths32@gmail.com

# Parents with children at nurseries, schools and colleges

## A guide to regular rapid Covid-19 testing



### Regular rapid testing is now available for parents, their households and bubbles.

Regular rapid testing is a fast and easy way to find out if you have coronavirus and help protect your loved ones and community. It's free and takes around 30 minutes.

### Why introduce regular rapid testing?

Up to 1 in 3 people who have Covid-19 have no symptoms and could be spreading it without knowing.

Regular rapid testing is now available for parents of nursery, school children and college students. As well as adults in their households, childcare and support bubbles.

Regular testing for people without symptoms is already taking place across the country. Thousands of people who didn't know they had the virus have been able to take action to stop the spread of the disease.

As lockdown restrictions ease, getting into the regular habit of twice weekly testing will play an important role in getting back to normal; alongside the vaccine, following the hands, face, space guidance, and social distancing measures.

### Regular testing for school staff and students

Regular rapid testing is already available to all staff at nursery, primary and secondary schools and colleges.

Secondary school and college students aged 11 and above will continue to access regular rapid tests directly through their school or college. And we continue to encourage them to get tested.

On return they will initially be supervised while testing at school and then continue to test themselves at home with test kits they will get from school or college.

Nursery and primary school children are not being asked to be tested as evidence continues to show that children and young people are at low risk from Covid-19 and are very unlikely to get seriously ill.

### What is the benefit to you?

By taking part in regular rapid testing, you'll be protecting yourself and your loved ones. And helping us all get back to a more normal way of life.



## How does it work?

It's a simple swab test you can do at home, school, work or test site, using a Lateral Flow Device (LFD). It takes around 30 minutes to find out if you have the virus.

The test detects viral proteins that are present when someone has Covid-19. Research from Public Health England and Oxford University shows that they pick up the vast majority of people in the most infectious stage of the disease. With up to 1 in 3 people who have the virus showing no symptoms – they could be spreading it without knowing.

Testing should take place twice a week, every three – five days, ideally in the morning. Why not add this to your morning routine?

If you test negative, you can continue to go to work. You should still strictly follow all other government guidelines and avoid all unnecessary contact. If you, your household or bubble test positive, you should all self-isolate immediately. And then the person who has tested positive should also take a confirmatory PCR test and follow latest government guidance.

For more information visit [gov.uk/guidance/understanding-lateral-flow-antigen-testing-for-people-without-symptoms](https://www.gov.uk/guidance/understanding-lateral-flow-antigen-testing-for-people-without-symptoms)



YouTube Introduction to Rapid Lateral Flow testing

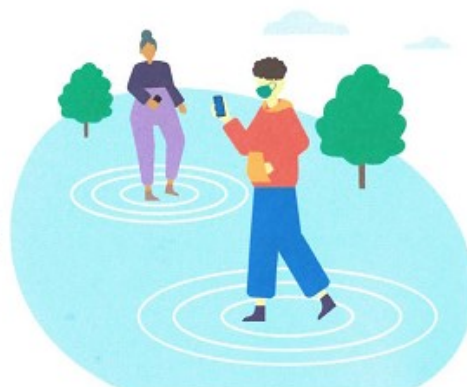


## Reporting your test

You should report your results online straight away, even if your result is negative or void. It's easy to do at: [gov.uk/report-covid19-result](https://www.gov.uk/report-covid19-result)

Results can also be reported via telephone by calling 119 (free from mobiles and landlines). Lines are open every day, 7am to 11pm.

If you have tested positive, you can also check to see if you are eligible for the £500 Test and Trace Support Payment.



## Where can I get tested?

If you are a parent or adult of a household, childcare or support bubble you can either:

1. Get an assisted test at work if it is available.
2. Attend a test site to get tested (where you will be able to see how to take the test) or pick up tests to do at home.
3. Order a test online to do at home.

To find out how to get a free rapid Covid-19 test visit [gov.uk/coronavirus-school-household-testing](https://www.gov.uk/coronavirus-school-household-testing)

Regular rapid testing is for those without symptoms of Coronavirus. If you have symptoms, you should continue to book through [nhs.uk/coronavirus](https://www.nhs.uk/coronavirus)

# KS3 After School Learning Club

This new club will start after the Easter Break for Year 7 on Mondays and Year 8 on Thursdays. The club is intended for pupils to use to do homework in or to catch up on any outstanding work.

The club will take place in C1 and will run from 3-4pm.  
Invitation letters have been sent to all pupils via Parentpay.



## Parking

Please can we politely request that you do not use the small car park opposite Oakfield Academy when dropping off or picking up pupils. The car park is private land, we would therefore ask that you drop/pick up away from the Academy and walk the remainder of the journey. Thank you for your support.