



# IF YOU WERE an ENGINEER WHAT WOULD YOU DO?®

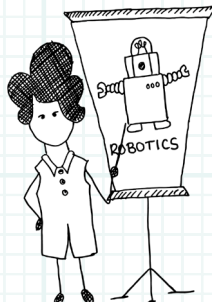


Register your school for the competition:  
<https://leadersaward.com/teacher-registration/>



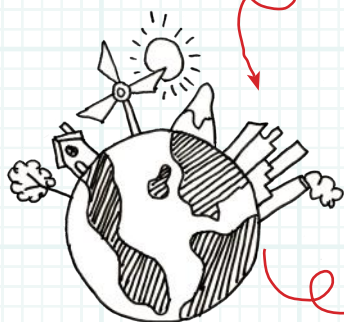
Join our online engineer interviews to meet and interview engineers across different industries  
<https://leadersaward.com/meet-an-engineer/>

AND/OR



Find an engineer to come to your school to discuss engineering and to be interviewed by pupils

**Did you know**  
**1,345**  
**ENGINEERS INVOLVED**  
2018/19  
from live interviews,  
visiting schools, grading  
pupils work &  
attending award  
events



Pupils each identify a problem that affects them, their family, their neighbourhood or the whole world

The magnet  
Shirt



The right side is  
the side with  
the magnet

Schools fill out the registration forms and send to:

**LEADERS AWARD FLOOR 2**  
**AMS OFFICE TOWER,**  
**AMS TECHNOLOGY PARK,**  
**BILLINGTON ROAD,**  
**BURNLEY**  
**BB11 5UB**

**Did you know**  
**2,822**

Primary & Secondary  
pupils designs were  
put on public exhibition  
across 16 regions!

**283**

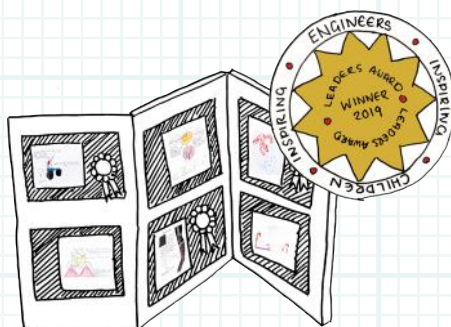
Primary & Secondary  
pupils won awards

Pupils illustrate and annotate their design. They must also provide a letter to persuade engineers to build their design.

**Did you know**  
**49,169**  
**PUPILS ENTERED IN**  
2018/19 which were  
graded by engineers &  
every pupil received  
a certificate!



Universities select a design to build  
**11** pupils designs were built last year



Winners are selected and entries are shortlisted for exhibitions

**PASS  
MERIT  
DISTINCTION**



All entries are then marked by engineers and are graded pass, merit or distinction

IF YOUR SCHOOL WOULD LIKE TO TAKE PART IN THIS EXTRAORDINARY COMPETITION PLEASE CONTACT:

[INFO@LEADERSAWARD.COM](mailto:INFO@LEADERSAWARD.COM) FOR MORE INFORMATION. VISIT [WWW.LEADERSAWARD.COM](http://WWW.LEADERSAWARD.COM) TO REGISTER BY **MARCH 25TH 2020!**

Primary Engineer  
**LEADERS AWARD**  
Secondary Engineer  
**LEADERS AWARD**

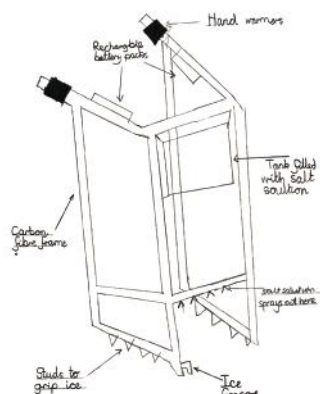


@LEADERSAWARD

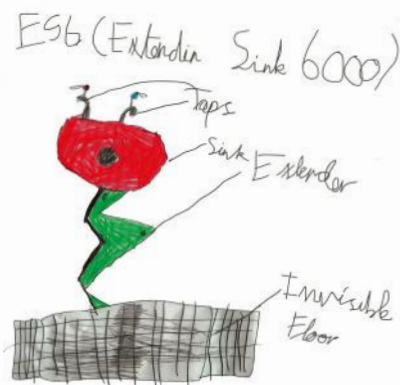
#LA2020 #IfYouWereAnEngineerWhatWouldYouDo?

# IF YOU WERE an ENGINEER WHAT WOULD YOU DO?®

PREVIOUS DESIGNS



'THE WINTER WALKER' CHARLIE P4

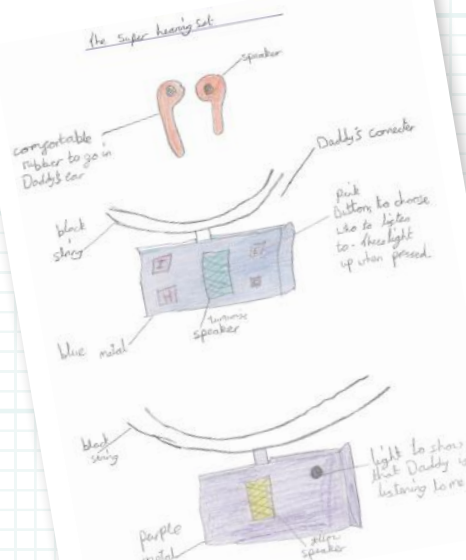


'EXTENDING SINK 6000' SAVANNAGH Y2



THE "RAINBOW MAKER" WHICH WORKS BY SPRAYING WATER ONTO A MIRROR WHILST, AT THE SAME TIME, A LIGHT SHINES THROUGH THE SPRAY CREATING THE DESIRED EFFECT. IT ALSO PLAYS "HAPPY BIRTHDAY" WHILST THE RAINBOW IS BEING CREATED - ALL AT THE PRESS OF A BUTTON!!

'RAINBOW MAKER' FINLAY P2



'THE SUPER HEARING SET' ISABELLE Y3



## ILLUSTRATION & ANNOTATION



### GENTLE BRAKING

The red line will travel from the start box at the bottom middle of the screen to approx. 1/3rd of the way around the perimeter stopping at any point in between. This will indicate the user is depressing their brakes lightly.



### MEDIUM TO HEAVY BRAKING

The red line will travel from the start box at the bottom middle of the screen to approx. 2/3rd of the way around the perimeter stopping at any point in between. This will indicate the user is depressing their brakes with more severity and attention is required immediately.

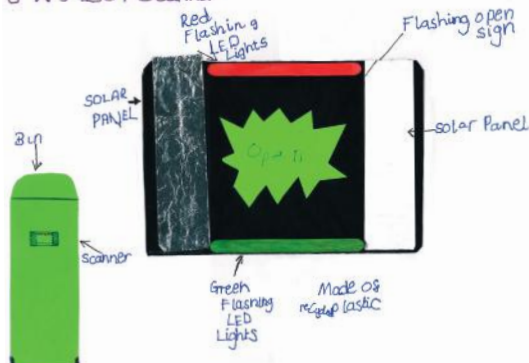


### HEAVY BRAKING TO DEAD STOP

The red line will travel from the start box at the bottom middle of the screen ALL the way around the perimeter to the top box, stopping at any point in between. This will indicate the user is depressing their brakes most severely and urgent action required. The top box will flash indicating imminent danger ahead.

'RLBS (RED LINE BREAKING SYSTEM)' PHILIPPA Y7

## JW's Bin Scanner



'BIN SCANNER' JOSHUA Yr3

# IF YOU WERE an ENGINEER What would you do?®