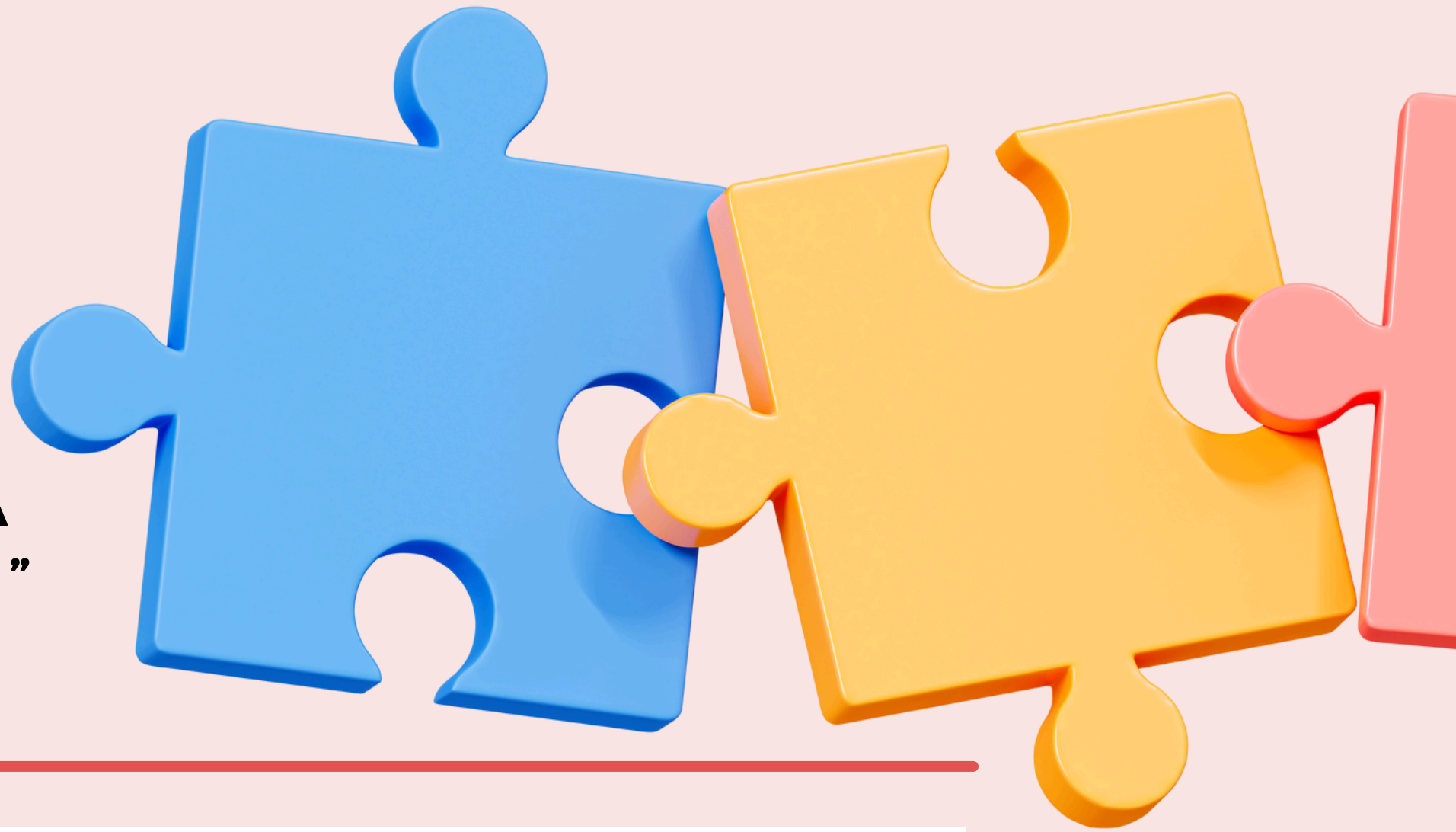


# friday club schedule 2024/25



**“AROUND EVERY CORNER A  
NEW OPPORTUNITY AWAITS”**

Be the person God has called you to be

## BEFORE SCHOOL....

- 8:15am**
- Breakfast Club, St Mary's Dining Hall
  - Y11 Breakfast Session in MFL - Invite Only MFL1 (Miss Garcia):  
**8am**

## LUNCHTIME - 1ST HALF

- 12:25pm**
- MFL - Champions League of Linguists in MFL2 (Mrs Rance)
- until**
- Geography Film Club in G1 (Miss Barron)
- 12:55pm**
- Colouring Club in the EMS (Miss Seaman)
  - Student Librarians (Ms Jawid)

## LUNCHTIME - 2ND HALF

- 12:55pm**
- SVP Catholic Life in RE1 (Miss Welsh)
- until**
- Geography Film Club in G1 (Miss Barron)
- 1:20pm**
- PE Inclusive Club - Invite only Gym (Mr Wardman)
  - All Years Basketball in the Sports Hall (Mr Healey)
  - Colouring Club in the EMS (Miss Seaman)
  - Social Justice Club in the Library (Ms. Jawid)
  - Student Librarians in the Library (Ms Jawid)

## AFTER SCHOOL....

- From**
- KS3/4 Academic Support in English in E1 (Miss Chapman) -  
**3:20pm** WEEK A only
  - Art Open Studio for KS4 only (Mrs Pilling)
  - Worship Choir in MU2 (Miss Conway)



#thisishow

WEDOITHERE